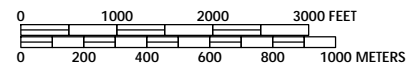


CITY OF WHITE CITY

MORRIS COUNTY KANSAS

T 14 S, T 15 S, R 6 E, R 7 E
PREPARED BY THE
KANSAS DEPARTMENT OF TRANSPORTATION
BUREAU OF TRANSPORTATION PLANNING
IN COOPERATION WITH THE
U.S. DEPARTMENT OF TRANSPORTATION
FEDERAL HIGHWAY ADMINISTRATION

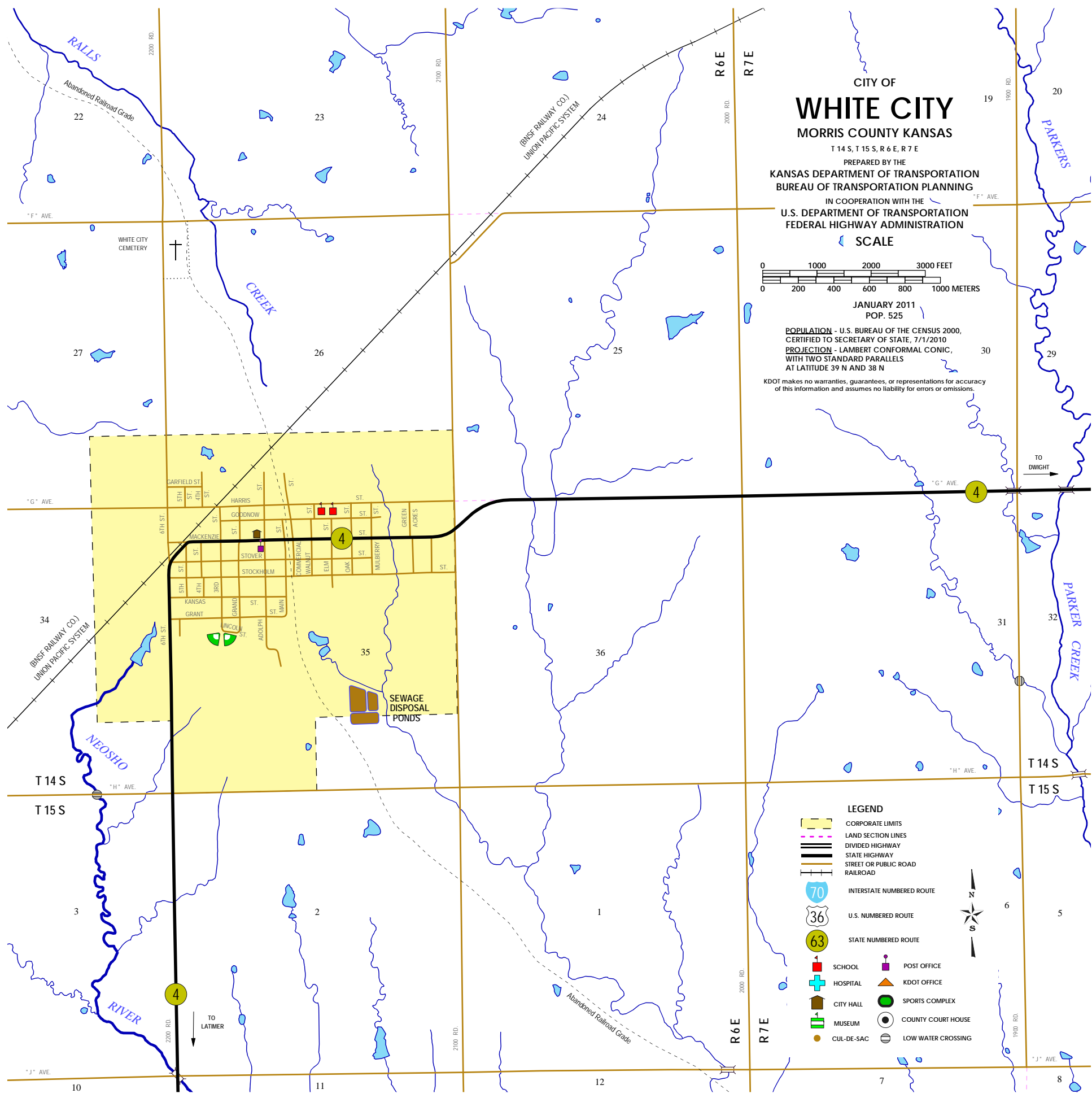
SCALE



JANUARY 2011
POP. 525

POPULATION - U.S. BUREAU OF THE CENSUS 2000,
CERTIFIED TO SECRETARY OF STATE, 7/1/2010
PROJECTION - LAMBERT CONFORMAL CONIC,
WITH TWO STANDARD PARALLELS
AT LATITUDE 39 N AND 38 N

KDOT makes no warranties, guarantees, or representations for accuracy
of this information and assumes no liability for errors or omissions.



LEGEND

- CORPORATE LIMITS
- LAND SECTION LINES
- DIVIDED HIGHWAY
- STATE HIGHWAY
- STREET OR PUBLIC ROAD
- RAILROAD
- INTERSTATE NUMBERED ROUTE
- U.S. NUMBERED ROUTE
- STATE NUMBERED ROUTE
- SCHOOL
- HOSPITAL
- CITY HALL
- MUSEUM
- CUL-DE-SAC
- POST OFFICE
- KDOT OFFICE
- SPORTS COMPLEX
- COUNTY COURT HOUSE
- LOW WATER CROSSING

