

# CITY OF WHITING

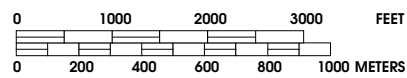
JACKSON COUNTY KANSAS

T 5 S, T 6 S, R 16 E

PREPARED BY THE  
**KANSAS DEPARTMENT OF TRANSPORTATION**  
**BUREAU OF TRANSPORTATION PLANNING**

IN COOPERATION WITH THE  
**U.S. DEPARTMENT OF TRANSPORTATION**  
**FEDERAL HIGHWAY ADMINISTRATION**

### SCALE

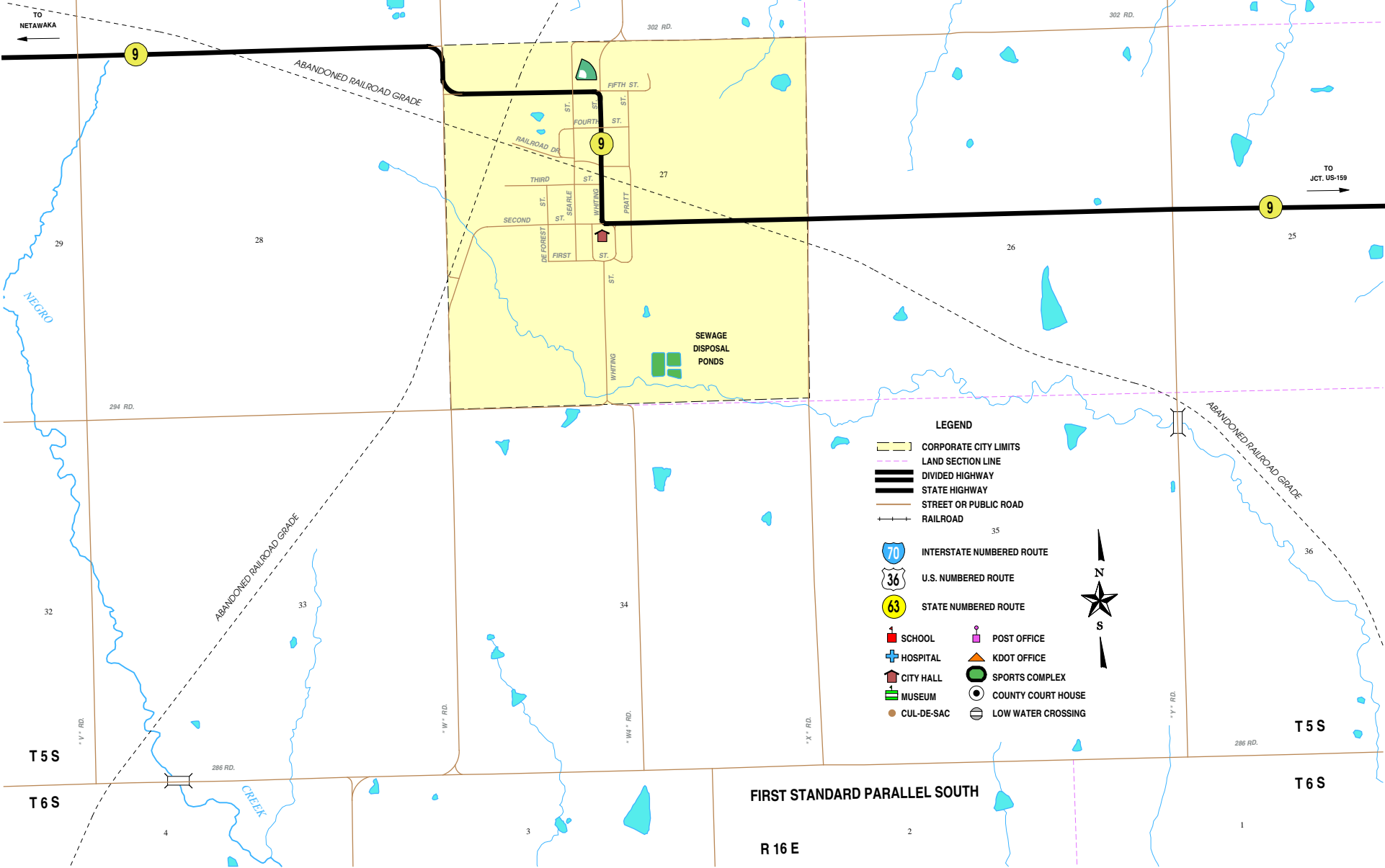


MAY, 2007  
POP. 216

POPULATION - U.S. BUREAU OF THE CENSUS 2000  
CERTIFIED TO SECRETARY OF STATE, 7/1/2006

PROJECTION - LAMBERT CONFORMAL CONIC  
WITH TWO STANDARD PARALLELS  
AT LATITUDE 39° N AND 38° N

KDOT makes no warranties, guarantees, or representations for accuracy  
of this information and assumes no liability for errors or omissions.



- LEGEND**
- CORPORATE CITY LIMITS
  - LAND SECTION LINE
  - DIVIDED HIGHWAY
  - STATE HIGHWAY
  - STREET OR PUBLIC ROAD
  - RAILROAD
  - INTERSTATE NUMBERED ROUTE
  - U.S. NUMBERED ROUTE
  - STATE NUMBERED ROUTE
  - SCHOOL
  - HOSPITAL
  - CITY HALL
  - MUSEUM
  - CUL-DE-SAC
  - POST OFFICE
  - KDOT OFFICE
  - SPORTS COMPLEX
  - COUNTY COURT HOUSE
  - LOW WATER CROSSING



FIRST STANDARD PARALLEL SOUTH