

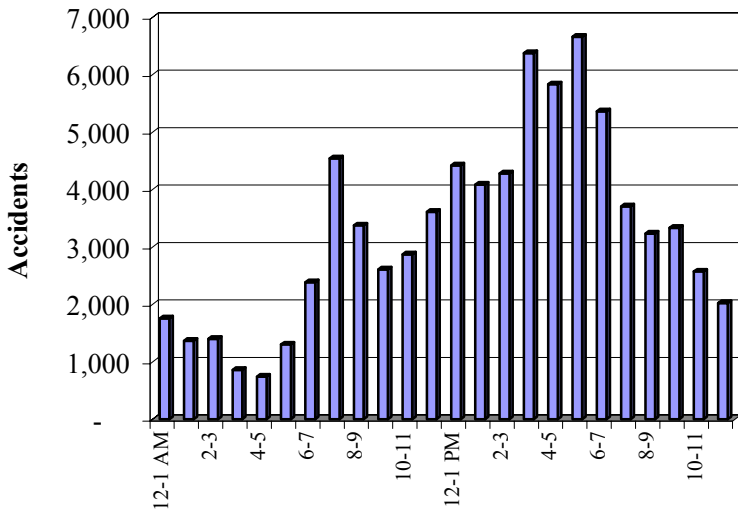


# TIME TRENDS

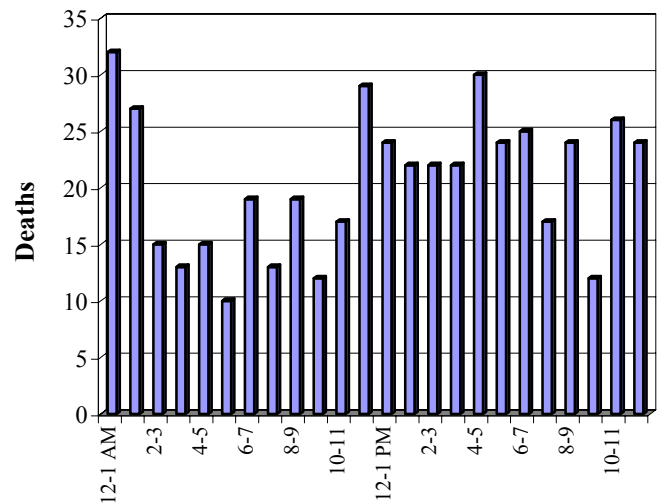
## HOURLY

Time	Total Accidents	% of Total	Deaths	% of Deaths
12-1 AM	1,754	2.2%	32	6.5%
1-2	1,364	1.7%	27	5.5%
2-3	1,401	1.8%	15	3.0%
3-4	860	1.1%	13	2.6%
4-5	742	0.9%	15	3.0%
5-6	1,302	1.7%	10	2.0%
6-7	2,384	3.0%	19	3.8%
7-8	4,544	5.8%	13	2.6%
8-9	3,375	4.3%	19	3.8%
9-10	2,607	3.3%	12	2.4%
10-11	2,872	3.6%	17	3.4%
11-12	3,611	4.6%	29	5.9%
12-1 PM	4,421	5.6%	24	4.9%
1-2	4,085	5.2%	22	4.5%
2-3	4,282	5.4%	22	4.5%
3-4	6,376	8.1%	22	4.5%
4-5	5,832	7.4%	30	6.1%
5-6	<b>6,658</b>	<b>8.4%</b>	24	4.9%
6-7	5,360	6.8%	25	5.1%
7-8	3,705	4.7%	17	3.4%
8-9	3,233	4.1%	24	4.9%
9-10	3,333	4.2%	12	2.4%
10-11	2,572	3.3%	26	5.3%
11-12	2,023	2.6%	24	4.9%
Unknown	111	0.1%	1	0.2%
<b>Total</b>	<b>78,807</b>	<b>100%</b>	<b>494</b>	<b>100%</b>

Accidents by Time of Day



Deaths by Time of Day



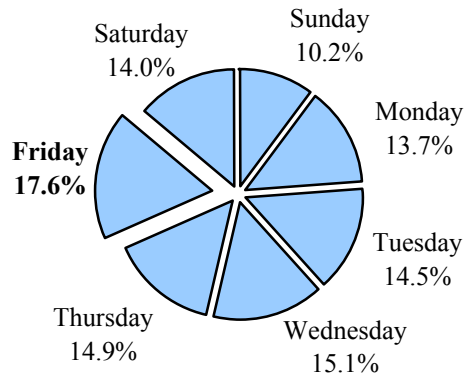


# TIME TRENDS

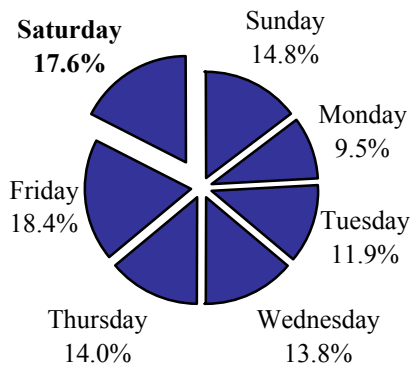
## DAILY

Day	Accidents	Deaths
Sunday	8,020	73
Monday	10,823	47
Tuesday	11,427	59
Wednesday	11,895	68
Thursday	11,745	69
Friday	<b>13,837</b>	<b>91</b>
Saturday	10,997	87
Unknown	63	0
<b>Total</b>	<b>78,807</b>	<b>494</b>

### Accidents by Day of Week



### Deaths by Day of Week



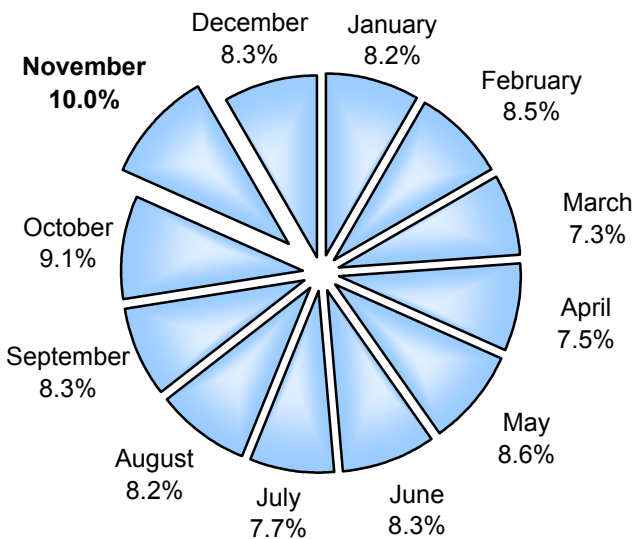


# TIME TRENDS

## MONTHLY

Month	Accidents	Deaths
January	6,479	24
February	6,695	29
March	5,734	36
April	5,918	48
May	6,805	49
June	6,558	41
July	6,083	44
August	6,420	<b>58</b>
September	6,499	45
October	7,134	40
November	<b>7,908</b>	46
December	6,502	34
Unknown	72	0
<b>Total</b>	<b>78,807</b>	<b>494</b>

**Accidents by Month**



**Deaths by Month**

