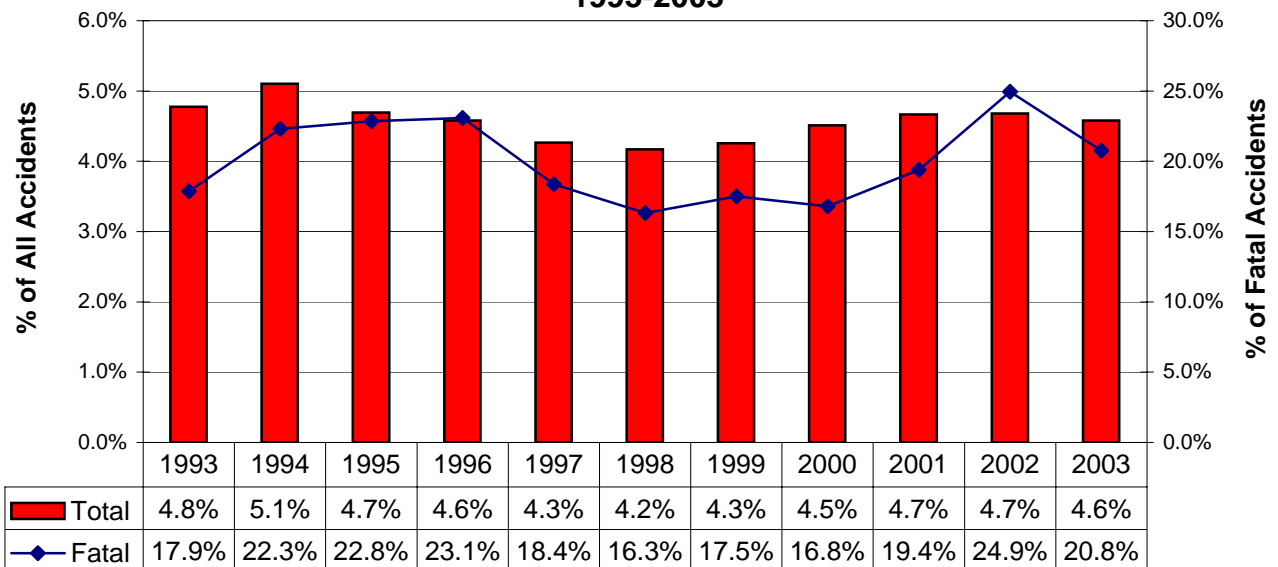


ALCOHOL-RELATED ACCIDENTS*

Type	Total	Alcohol-Related	% of All
Accidents			
All	74,993	3,434	4.6%
Fatal	419	87	20.8%
Injury	17,037	1,520	8.9%
PDO	57,537	1,827	3.2%
People			
All	180,262	7,064	3.9%
Deaths	469	97	20.7%
Injuries	24,795	2,281	9.2%
Unharmmed	154,998	4,686	3.0%



**Alcohol-Related Accident History
1993-2003**

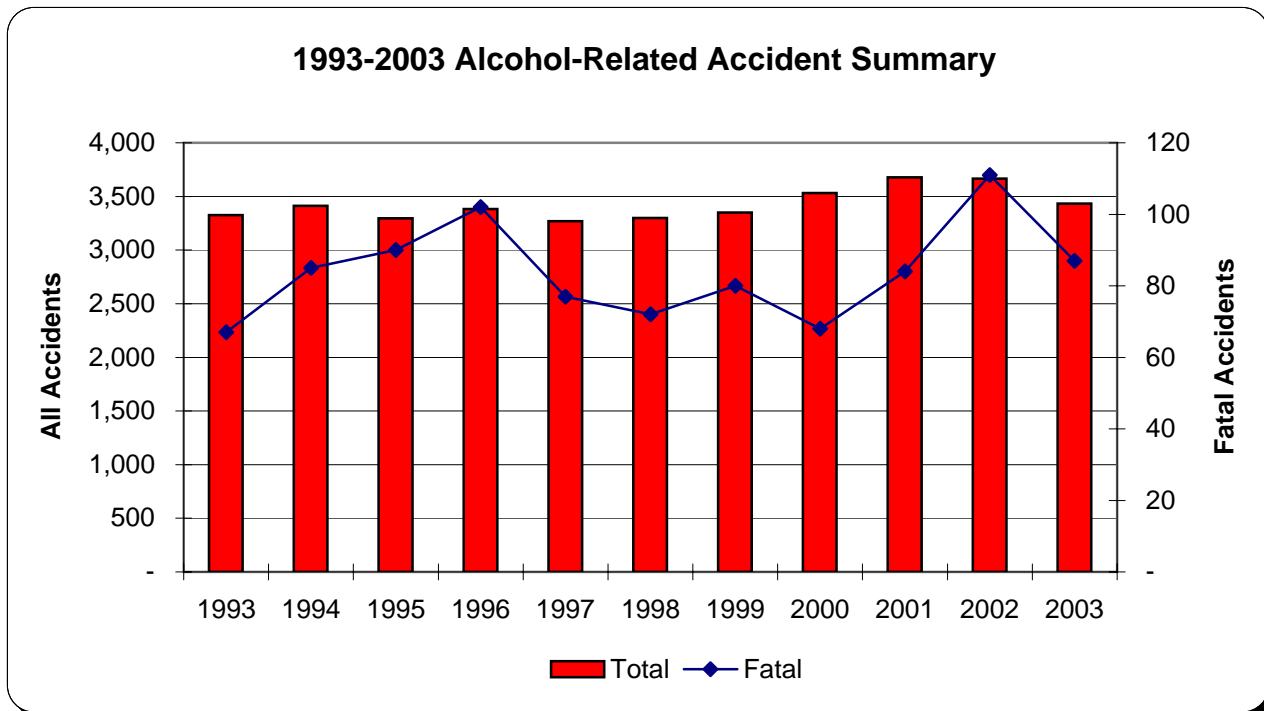


* The alcohol-related accident definition was modified in 2002 and is reflected in all of the data above. See the Definitions pages.

ALCOHOL-RELATED ACCIDENTS*

1993-2003 Summary

Year	Accidents				People	
	Total	Fatal	Injury	PDO**	Deaths	Injuries
1993	3,325	67	1,696	1,562	79	2,704
1994	3,411	85	1,824	1,502	96	2,852
1995	3,297	90	1,603	1,604	101	2,504
1996	3,382	102	1,719	1,561	117	2,688
1997	3,270	77	1,649	1,544	90	2,551
1998	3,298	72	1,593	1,633	84	2,469
1999	3,349	80	1,611	1,658	94	2,483
2000	3,531	68	1,673	1,790	80	2,533
2001	3,678	84	1,773	1,821	100	2,562
2002	3,666	111	1,635	1,920	129	2,419
2003	3,434	87	1,520	1,827	97	2,281
11-Year Total:	37,641	923	18,296	18,422	1,067	28,046



* The alcohol-related accident definition was modified in 2002 and is reflected in all of the data above. See the Definitions pages.

** PDO - Property Damage Only

ALCOHOL-RELATED ACCIDENTS***Involving Alcohol-Impaired Male Drivers**

Year	Accidents				People	
	Total	Fatal	Injury	PDO**	Deaths	Injuries
1993	2,776	59	1,405	1,312	68	2,225
1994	2,783	70	1,504	1,209	80	2,359
1995	2,719	71	1,327	1,321	79	2,054
1996	2,706	81	1,371	1,254	94	2,137
1997	2,650	65	1,336	1,249	78	2,067
1998	2,674	63	1,286	1,325	69	2,005
1999	2,710	66	1,307	1,337	79	2,031
2000	2,845	62	1,363	1,420	74	2,065
2001	3,007	70	1,467	1,470	85	2,124
2002	2,912	96	1,319	1,497	114	1,946
2003	2,689	73	1,215	1,401	81	1,841
11-Year Total:	30,471	776	14,900	14,795	901	22,854

Involving Alcohol-Impaired Female Drivers

Year	Accidents				People	
	Total	Fatal	Injury	PDO**	Deaths	Injuries
1993	546	9	297	240	13	500
1994	596	15	328	253	16	524
1995	557	18	278	261	21	459
1996	648	21	347	280	23	552
1997	605	12	314	279	12	497
1998	608	10	312	286	16	483
1999	629	14	313	302	15	478
2000	657	6	317	334	6	488
2001	649	15	313	321	16	452
2002	735	16	326	393	16	488
2003	728	14	312	402	16	459
11-Year Total:	6,958	150	3,457	3,351	170	5,380

* The alcohol-related accident definition was modified in 2002 and is reflected in the data above.

See the Definitions pages.

** PDO - Property Damage Only

Note: There are instances where a female and a male driver were involved in the same accident causing multiple counting in the data above. In addition, drivers whose gender was unknown are not included.

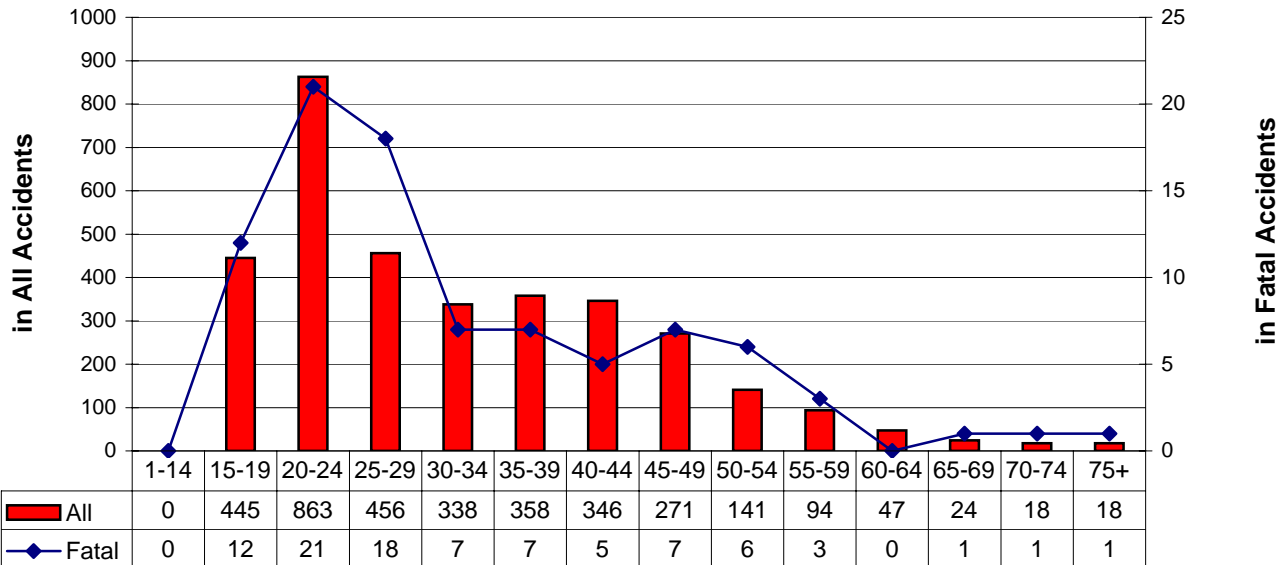
ALCOHOL-RELATED ACCIDENTS*

By Driver Age



Alcohol-Impaired Driver Ages	Accidents				People	
	Total	Fatal	Injury	PDO**	Deaths	Injured
Unknown	78	0	13	65	0	15
1-14	0	0	0	0	0	0
15-19	443	12	194	237	15	311
1-20	613	14	263	336	17	425
20-24	858	20	346	492	25	584
25-29	455	18	214	223	18	331
30-34	338	7	158	173	8	219
35-39	357	7	173	177	8	251
40-44	346	5	168	173	5	215
45-49	271	7	112	152	7	161
50-54	141	6	69	66	6	100
55-59	94	3	48	43	3	71
60-64	47	0	15	32	0	26
65-69	24	1	10	13	1	11
70-74	18	1	8	9	1	9
75+	18	1	11	6	1	17

Alcohol-Impaired Drivers By Age Group



Note: More than one driver per age group can be involved in the same accident.

* The alcohol-related accident definition was modified in 2002 and is reflected in the data above.

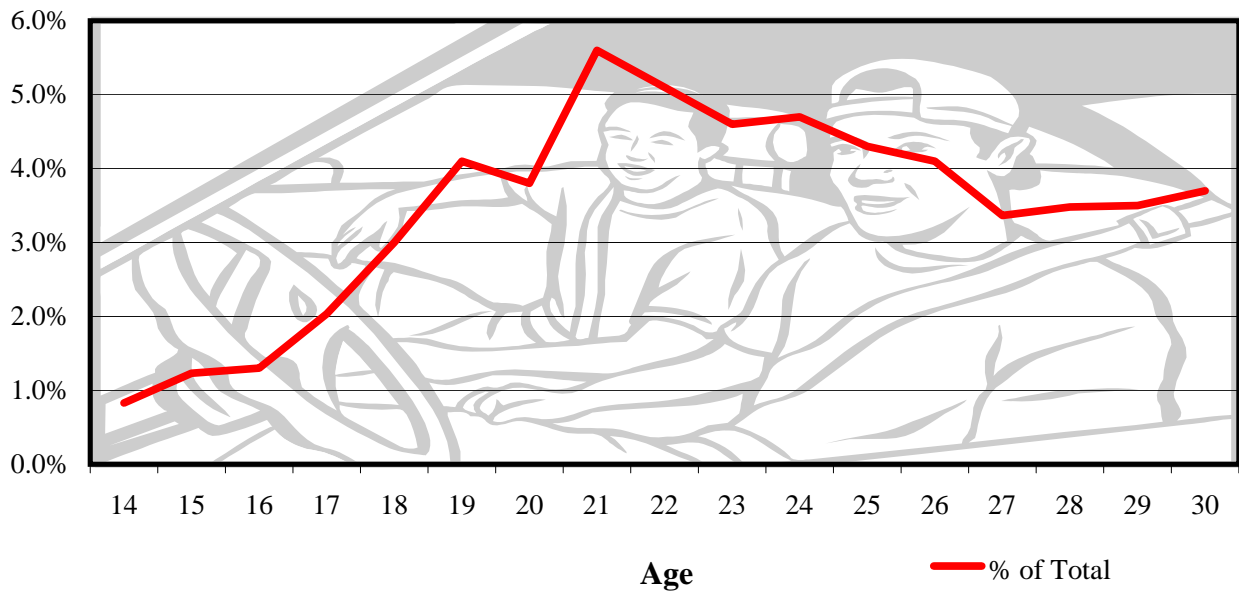
See the Definitions pages.

** PDO - Property Damage Only

Driver Age Summary Ages 14-30

Driver Age	All Accidents Per Driver Age					People		ALCOHOL-RELATED		
	Total	% of All*	Fatal	Injury	PDO**	Deaths	Injuries	Impaired Drivers	Accidents	% of Total
14	286	0.38%	0	94	192	0	160	0	0	0.8%
15	1,313	1.75%	5	374	934	8	592	9	12	1.2%
16	4,441	5.92%	17	1,153	3,271	18	1,837	45	45	1.3%
17	4,799	6.40%	15	1,266	3,518	17	1,971	76	75	2.0%
18	4,984	6.65%	24	1,240	3,720	28	1,989	139	134	3.0%
19	4,294	5.73%	23	1,102	3,169	28	1,641	165	162	4.1%
20	3,943	5.26%	15	1,023	2,905	17	1,551	172	167	3.8%
21	3,589	4.79%	18	906	2,665	20	1,387	204	199	5.6%
22	3,528	4.70%	19	898	2,611	21	1,408	190	186	5.1%
23	3,166	4.22%	18	768	2,380	22	1,204	157	157	4.6%
24	2,755	3.67%	16	668	2,071	17	1,004	135	135	4.7%
25	2,610	3.48%	9	660	1,941	9	953	109	108	4.3%
26	2,333	3.11%	6	633	1,694	7	948	110	109	4.1%
27	2,310	3.08%	11	608	1,691	12	856	88	87	3.4%
28	2,062	2.75%	5	493	1,564	5	738	63	63	3.5%
29	1,979	2.64%	17	495	1,467	19	782	81	78	3.5%
30	2,030	2.71%	11	542	1,477	11	835	69	69	3.7%

Percentage of Alcohol-Related Accidents to All Accidents by Driver Age



* % of All - Divides all accidents for Kansas in 2003 by all accidents per age.

**PDO - Property Damage Only