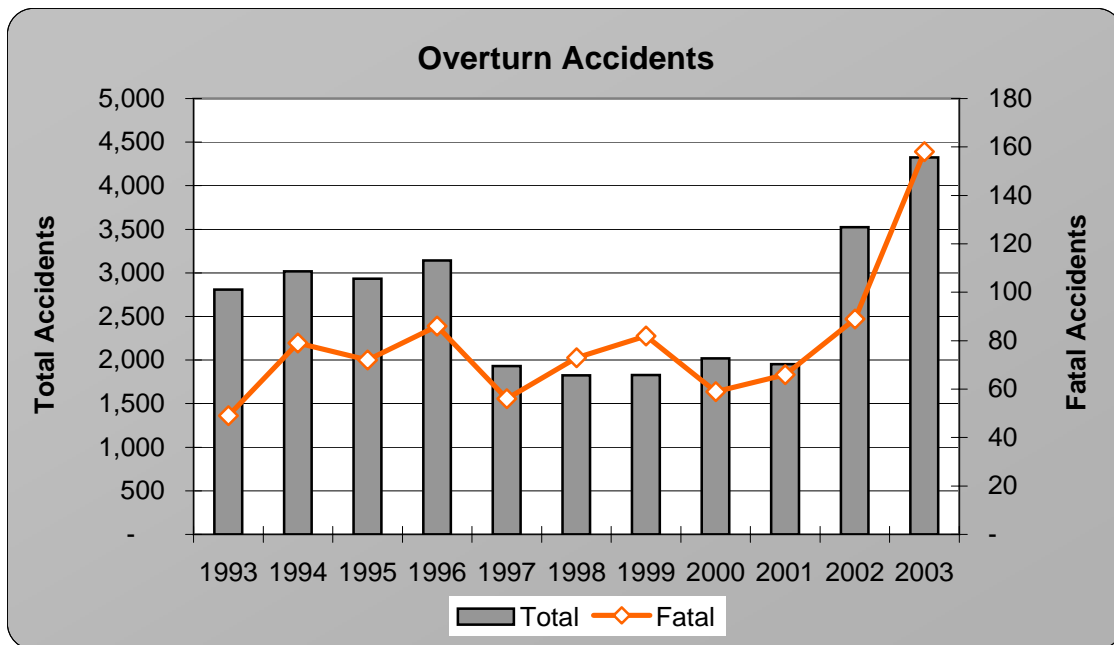


VEHICLE OVERTURN ACCIDENTS

Year	Accidents				People	
	Total	Fatal	Injury	PDO*	Deaths	Injuries
1993	2,807	49	1,456	1,302	49	2,103
1994	3,018	79	1,698	1,241	84	2,461
1995	2,935	72	1,577	1,286	73	2,295
1996	3,144	86	1,720	1,338	91	2,607
1997	1,930	56	1,044	830	61	1,514
1998	1,823	73	982	768	75	1,484
1999	1,827	82	1,023	722	93	1,467
2000	2,020	59	1,155	806	63	1,639
2001	1,954	66	1,080	808	75	1,502
2002	3,526	89	1,933	1,504	95	2,726
2003	4,324	158	2,498	1,668	171	3,704
Total:	29,308	869	16,166	12,273	930	23,502



In 2003, 5.8% of all accidents and 37.7% of all fatal accidents involve vehicles overturning.

*PDO - Property Damage Only

Note: The definition for overturn accidents changed for 2003 data and beyond. See definitions page.