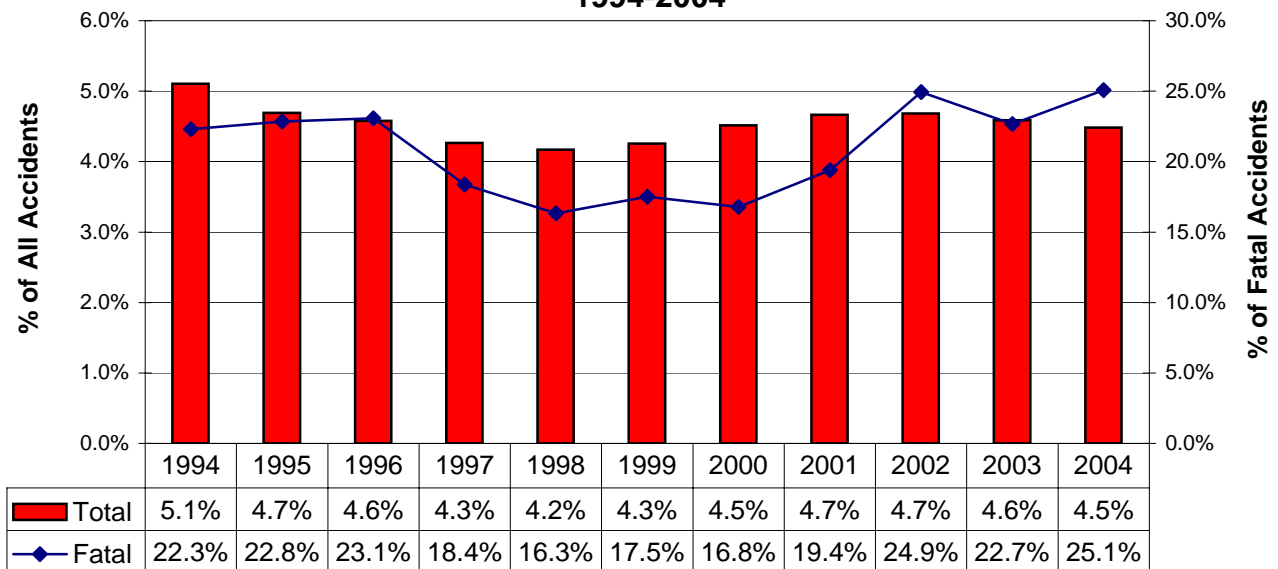


# ALCOHOL-RELATED ACCIDENTS\*

Type	Total	Alcohol-Related	% of All
<b>Accidents</b>			
All	74,102	3,323	4.5%
Fatal	391	98	25.1%
Injury	16,631	1,419	8.5%
PDO	57,080	1,806	3.2%
<b>People</b>			
All	177,382	6,545	3.7%
Deaths	460	116	25.2%
Injuries	23,776	2,007	8.4%
Unharmmed	153,146	4,422	2.9%



**Alcohol-Related Accident History  
1994-2004**



\* The alcohol-related accident definition was modified in 2002 and is reflected in all of the data above. See the Definitions pages.

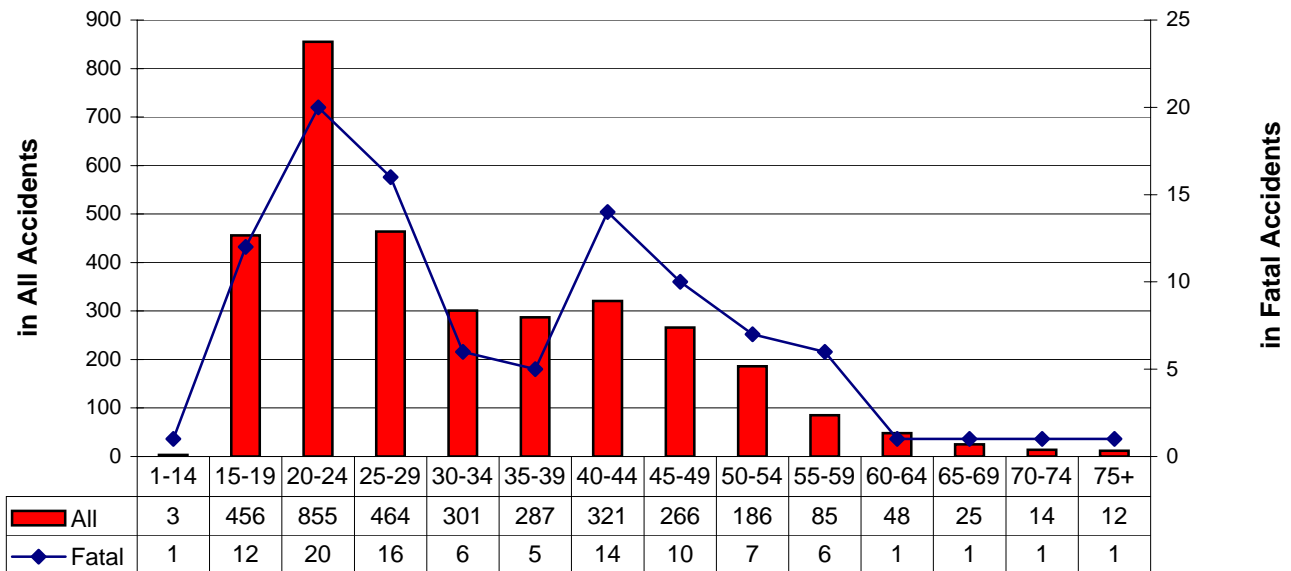
# ALCOHOL-RELATED ACCIDENTS\*

## By Driver Age



Alcohol-Impaired Driver Ages	Accidents				People	
	Total	Fatal	Injury	PDO**	Deaths	Injured
Unknown	66	0	11	55	0	15
1-14	3	1	1	1	1	8
15-19	452	12	200	240	13	304
1-20	623	18	281	324	19	426
20-24	850	20	366	464	23	506
25-29	462	16	195	251	21	301
30-34	302	6	136	160	8	210
35-39	287	5	128	154	6	158
40-44	321	14	134	173	19	173
45-49	265	10	124	131	10	163
50-54	185	6	75	104	6	108
55-59	85	6	33	46	7	41
60-64	48	1	19	28	2	30
65-69	24	1	8	15	1	16
70-74	14	1	6	7	1	8
75+	12	1	7	4	1	11

**Alcohol-Impaired Drivers By Age Group**



**Note: More than one driver per age group can be involved in the same accident.**

\* The alcohol-related accident definition was modified in 2002 and is reflected in the data above.

See the Definitions pages.

\*\* PDO - Property Damage Only

**ALCOHOL-RELATED ACCIDENTS\*****Involving Alcohol-Impaired Male Drivers**

Year	Accidents				People	
	Total	Fatal	Injury	PDO**	Deaths	Injuries
1994	2,783	70	1,504	1,209	80	2,359
1995	2,719	71	1,327	1,321	79	2,054
1996	2,706	81	1,371	1,254	94	2,137
1997	2,650	65	1,336	1,249	78	2,067
1998	2,674	63	1,286	1,325	69	2,005
1999	2,710	66	1,307	1,337	79	2,031
2000	2,845	62	1,363	1,420	74	2,065
2001	3,007	70	1,467	1,470	85	2,124
2002	2,912	96	1,319	1,497	114	1,946
2003	2,695	78	1,215	1,402	86	1,844
2004	2,604	81	1,132	1,391	95	1,598
<b>11-Year Total:</b>	<b>30,305</b>	<b>803</b>	<b>14,627</b>	<b>14,875</b>	<b>933</b>	<b>22,230</b>

**Involving Alcohol-Impaired Female Drivers**

Year	Accidents				People	
	Total	Fatal	Injury	PDO**	Deaths	Injuries
1994	596	15	328	253	16	524
1995	557	18	278	261	21	459
1996	648	21	347	280	23	552
1997	605	12	314	279	12	497
1998	608	10	312	286	16	483
1999	629	14	313	302	15	478
2000	657	6	317	334	6	488
2001	650	15	313	322	16	452
2002	735	16	326	393	16	488
2003	729	17	311	401	19	460
2004	720	17	298	405	21	429
<b>11-Year Total:</b>	<b>7,134</b>	<b>161</b>	<b>3,457</b>	<b>3,516</b>	<b>181</b>	<b>5,310</b>

\* The alcohol-related accident definition was modified in 2002 and is reflected in the data above. See the Definitions pages.

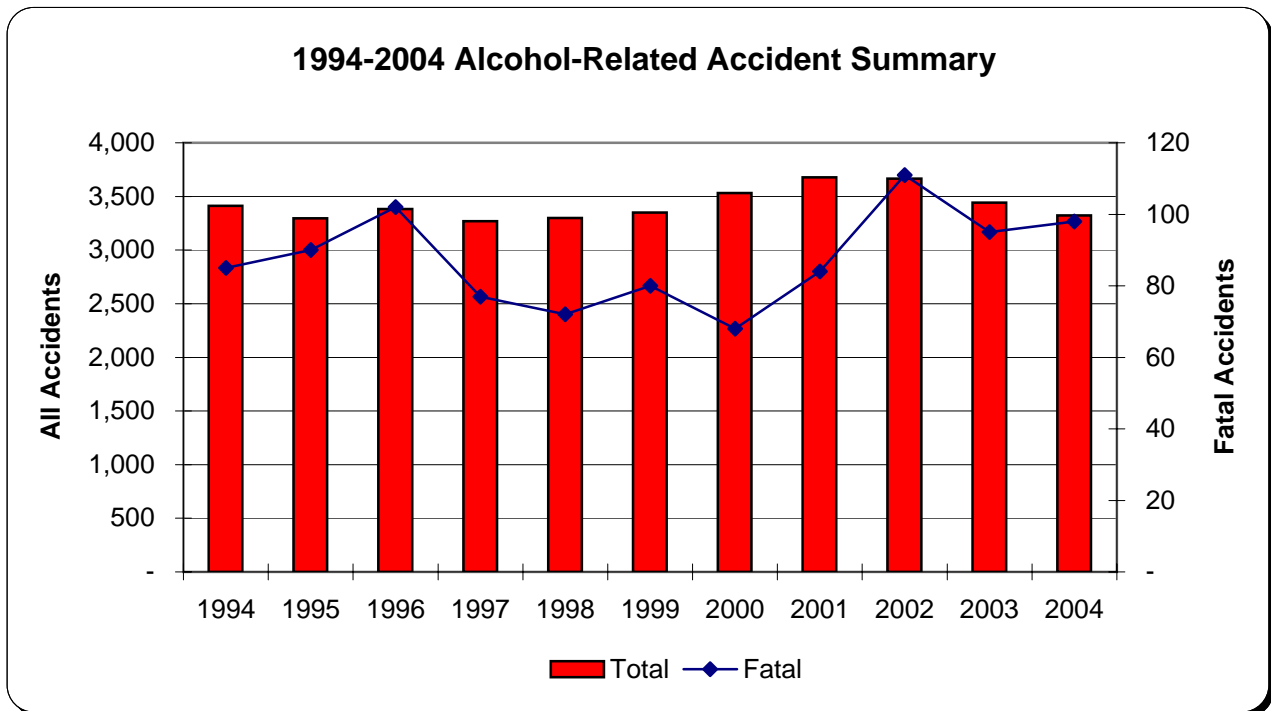
\*\* PDO - Property Damage Only

**Note:** There are instances where a female and a male driver were involved in the same accident causing multiple counting in the data above. In addition, drivers whose gender was unknown are excluded.

# ALCOHOL-RELATED ACCIDENTS\*

## 1994-2004 Summary

Year	Accidents				People	
	Total	Fatal	Injury	PDO**	Deaths	Injuries
1994	3,411	85	1,824	1,502	96	2,852
1995	3,297	90	1,603	1,604	101	2,504
1996	3,382	102	1,719	1,561	117	2,688
1997	3,270	77	1,649	1,544	90	2,551
1998	3,298	72	1,593	1,633	84	2,469
1999	3,349	80	1,611	1,658	94	2,483
2000	3,531	68	1,673	1,790	80	2,533
2001	3,678	84	1,773	1,821	100	2,562
2002	3,666	111	1,635	1,920	129	2,419
2003	3,442	95	1,519	1,828	105	2,285
2004	3,323	98	1,419	1,806	116	2,007
<b>11-Year Total:</b>	<b>37,647</b>	<b>962</b>	<b>18,018</b>	<b>18,667</b>	<b>1,112</b>	<b>27,353</b>



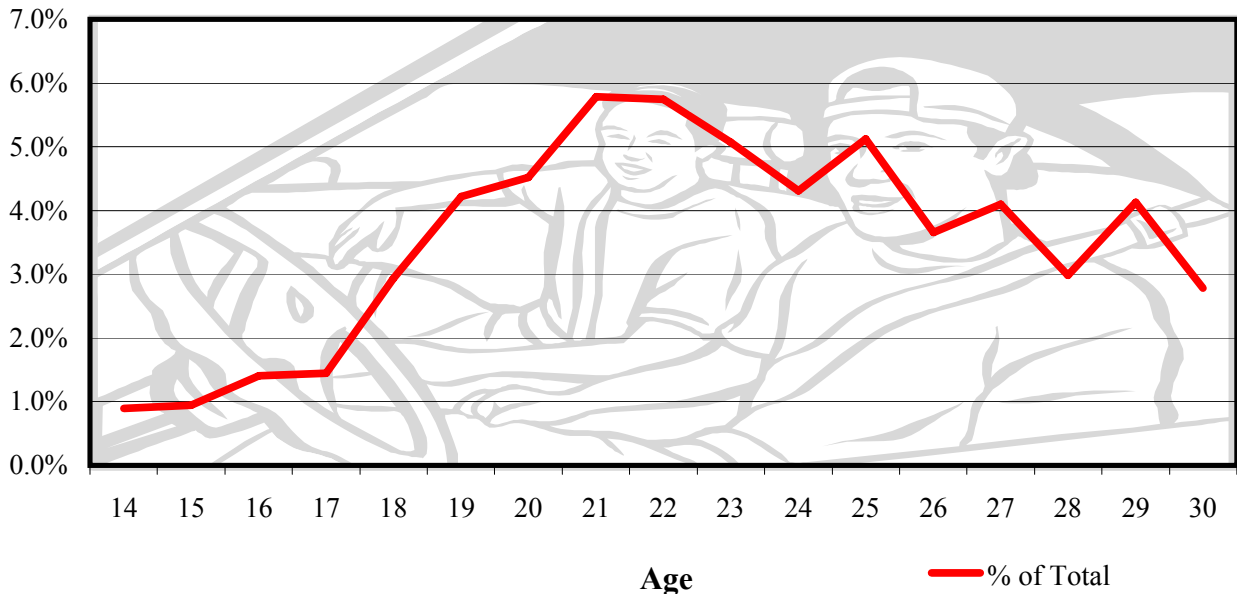
\* The alcohol-related accident definition was modified in 2002 and is reflected in all of the data  
See the Definitions pages.

\*\* PDO - Property Damage Only

## Driver Age Summary Ages 14-30

Driver Age	All Accidents Per Driver Age					People		ALCOHOL-RELATED		
	Total	% of All*	Fatal	Injury	PDO**	Deaths	Injuries	Impaired Drivers	Accidents	% of Total
14	225	0.30%	3	61	161	3	109	2	2	0.9%
15	1,265	1.71%	8	343	914	8	561	12	12	0.9%
16	4,334	5.85%	13	1,162	3,159	13	1,824	61	61	1.4%
17	4,639	6.26%	13	1,194	3,432	13	1,812	67	67	1.4%
18	4,666	6.30%	17	1,210	3,439	20	1,803	138	137	2.9%
19	4,218	5.69%	24	1,063	3,131	30	1,619	178	178	4.2%
20	3,784	5.11%	16	970	2,798	19	1,426	172	171	4.5%
21	3,629	4.90%	17	938	2,674	19	1,351	210	210	5.8%
22	3,258	4.40%	13	840	2,405	15	1,233	187	187	5.7%
23	3,270	4.41%	15	830	2,425	17	1,197	166	166	5.1%
24	2,787	3.76%	19	672	2,096	20	1,006	120	120	4.3%
25	2,596	3.50%	21	642	1,933	22	979	133	133	5.1%
26	2,382	3.21%	8	578	1,796	15	849	87	87	3.7%
27	2,270	3.06%	11	533	1,726	16	800	93	93	4.1%
28	2,143	2.89%	5	546	1,592	8	818	64	64	3.0%
29	2,109	2.85%	15	509	1,585	16	764	87	87	4.1%
30	1,944	2.62%	4	461	1,479	9	686	54	54	2.8%

**Percentage of Alcohol-Related Accidents to All Accidents by Driver Age**



\* % of All - Divides all accidents per age by all accidents for Kansas in 2004.

\*\*PDO - Property Damage Only