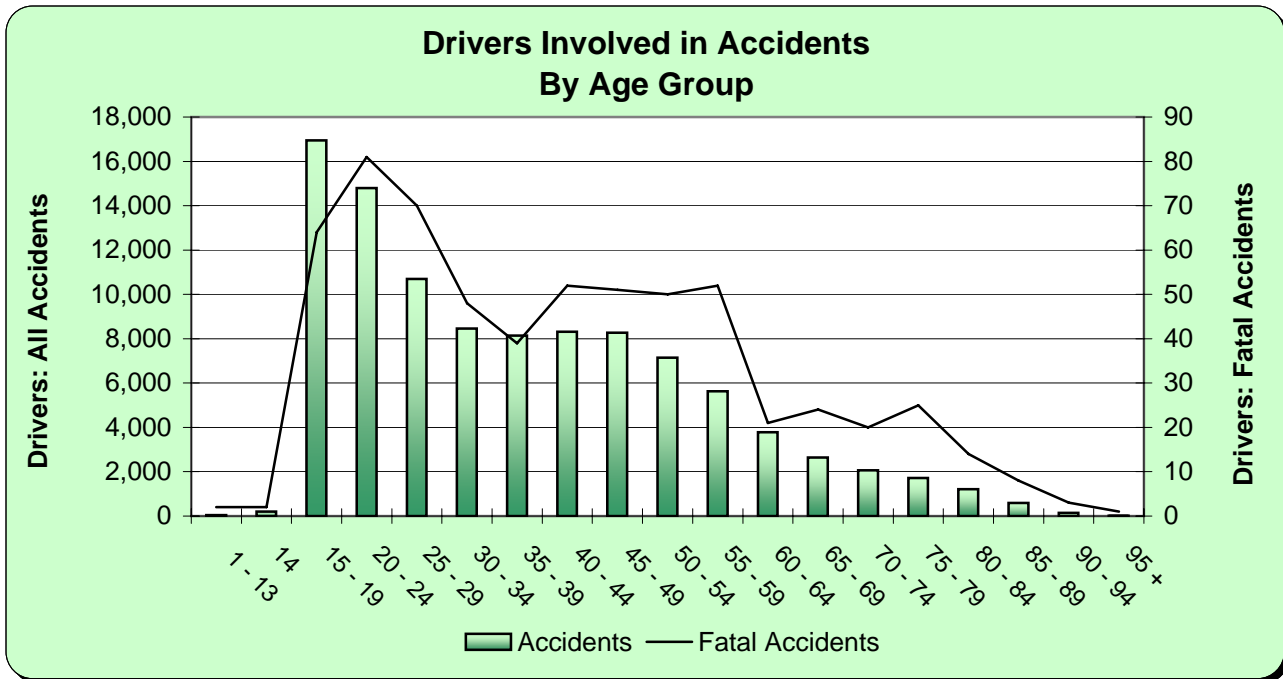


# DRIVER AGE SUMMARY

## By Age Group

Driver Age	DRIVERS Involved In...			Accidents Per Age Group		
	Accidents	Fatal Accidents	Injury Accidents	Total	Fatal	Injury
1 - 13	46	2	18	46	2	18
14	203	2	65	203	2	65
15 - 19	16,951	64	4,697	15,347	63	4,303
20 - 24	14,792	81	4,036	13,695	78	3,720
25 - 29	10,701	70	2,809	10,149	67	2,658
30 - 34	8,453	48	2,167	8,094	48	2,047
35 - 39	8,147	39	2,074	7,866	39	1,986
40 - 44	8,312	52	2,129	7,982	48	2,035
45 - 49	8,277	51	2,033	7,991	50	1,947
50 - 54	7,141	50	1,763	6,923	49	1,703
55 - 59	5,631	52	1,391	5,494	50	1,341
60 - 64	3,781	21	895	3,720	20	881
65 - 69	2,642	24	640	2,603	24	625
70 - 74	2,058	20	507	2,054	20	505
75 - 79	1,714	25	438	1,709	25	437
80 - 84	1,213	14	328	1,212	14	327
85 - 89	595	8	165	595	8	165
90 - 94	144	3	34	144	3	34
95 +	12	1	0	12	1	0
Unknown	4,463	1	562	4,403	1	551
<b>Total</b>	<b>105,276</b>	<b>628</b>	<b>26,751</b>	<b>65,460*</b>	<b>427*</b>	<b>15,792*</b>



\* The totals reflect all accidents in Kansas for 2006, not the sum of the cells above, as multiple counting occurs when drivers of different age groups are involved in the same accident.

## Drivers Involved in Accidents by Age

