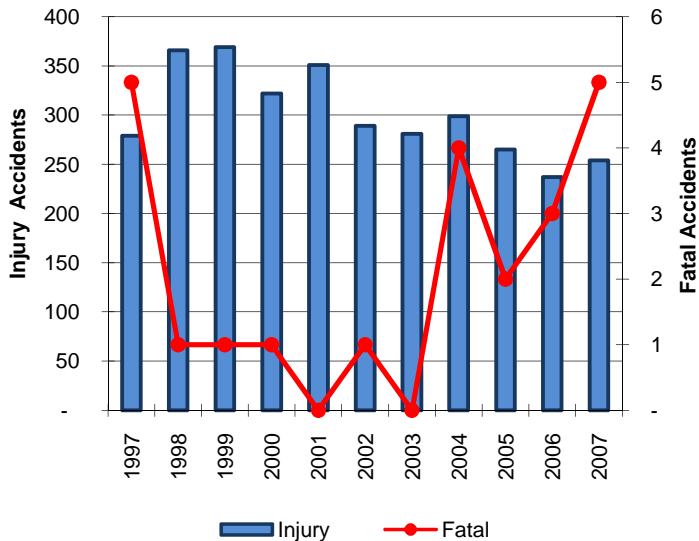


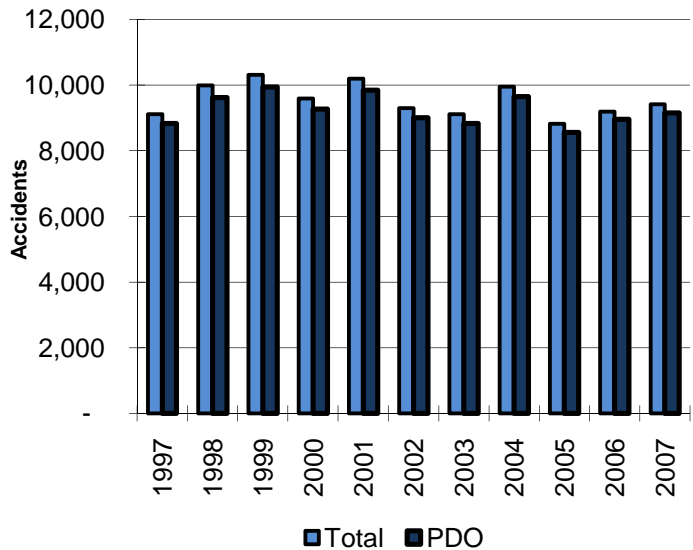
Deer Accidents

Year	Accidents				People	
	Total	Fatal	Injury	PDO	Deaths	Injuries
1997	9,116	5	279	8,832	5	350
1998	9,992	1	366	9,625	1	439
1999	10,312	1	369	9,942	1	450
2000	9,591	1	322	9,268	1	384
2001	10,192	-	351	9,841	-	418
2002	9,296	1	289	9,006	1	341
2003	9,114	-	281	8,833	-	332
2004	9,952	4	299	9,649	4	364
2005	8,825	2	265	8,558	2	329
2006	9,197	3	237	8,957	3	291
2007	9,417	5	254	9,158	5	298
Total	105,004	23	3,312	101,669	23	3,996

Injury & Fatal Deer Accidents



Total & PDO Deer Accidents



In 2007, 13.3% of all accidents in Kansas involved striking deer as the first harmful event.

