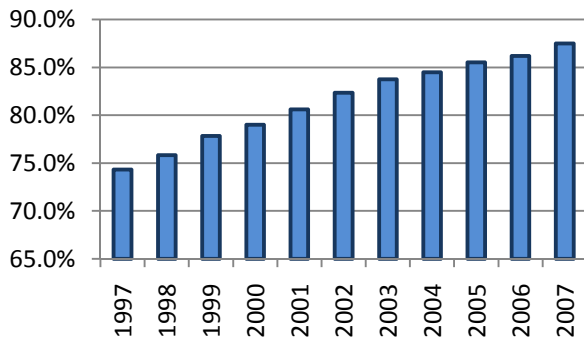


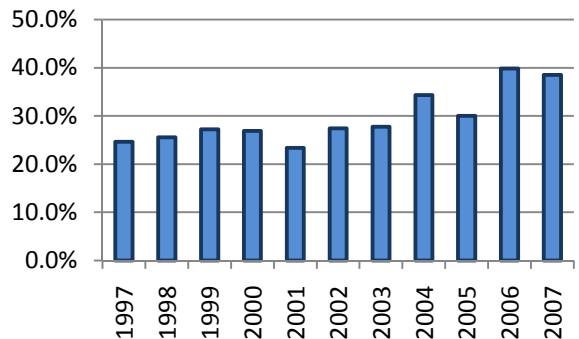
All Occupants* in Accidents - Safety Restraint Usage** History

Years												
	1997	1998	1999	2000	2001	2002	2003	2004	2005	2006	2007	Totals
Occupants in Accidents	185,016	191,830	189,573	185,182	184,931	182,785	172,571	170,182	156,147	148,486	157,228	1,923,931
Occupants Using Safety Belts	137,511	145,461	147,565	146,272	149,085	150,526	144,509	143,783	133,528	127,982	137,582	1,563,804
% Using Safety Belts	74.3%	75.8%	77.8%	79.0%	80.6%	82.4%	83.7%	84.5%	85.5%	86.2%	87.5%	81.3%
Deaths	426	422	481	409	436	438	400	399	350	364	343	4,468
Using Safety Belts	105	108	131	110	102	120	111	137	105	145	132	1,306
% Using Safety Belts	24.6%	25.6%	27.2%	26.9%	23.4%	27.4%	27.8%	34.3%	30.0%	39.8%	38.5%	29.2%
Injuries	29,878	29,530	28,897	27,374	27,158	25,295	23,081	21,930	20,871	20,418	20,859	275,291
Using Safety Belts	18,964	19,040	19,235	18,615	18,872	18,073	16,979	16,458	15,976	15,605	16,540	194,357
% Using Safety Belts	63.5%	64.5%	66.6%	68.0%	69.5%	71.4%	73.6%	75.0%	76.5%	76.4%	79.3%	70.6%
Unharmd or Unknown	154,712	161,878	160,195	157,399	157,337	157,052	149,090	147,853	134,926	127,704	136,026	1,644,172
Using Safety Belts	118,442	126,313	128,199	127,547	130,111	132,333	127,419	127,188	117,447	112,232	120,910	1,368,141
% Using Safety Belts	76.6%	78.0%	80.0%	81.0%	82.7%	84.3%	85.5%	86.0%	87.0%	87.9%	88.9%	83.2%

Percent of Occupants Safety Belt Use All Ages



Percent of Occupant Safety Belt Use Deaths: All Ages



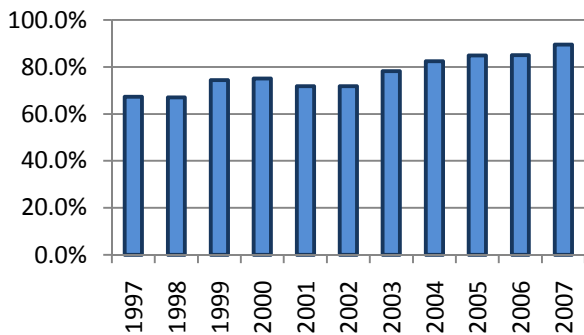
*Excludes occupants in vehicle body types: motorcycle, moped, farm equipment, all-terrain vehicle, bus, train, emergency vehicle, other, and unknown

**Excludes airbag only, helmet, eye protection, and unknown restraint use

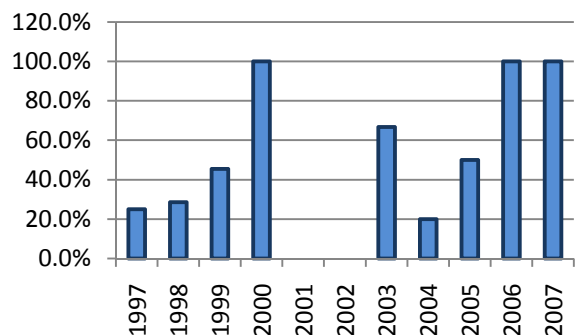
Occupants* 1-3 Years Old in Accidents - Safety Restraint Usage** History

Years												
	1997	1998	1999	2000	2001	2002	2003	2004	2005	2006	2007	Totals
Occupants in Accidents	5,606	5,903	5,879	5,593	5,513	5,377	4,990	4,987	4,548	4,158	4,615	57,169
Occupants Using Safety Belts	3,776	3,960	4,375	4,198	3,958	3,857	3,900	4,112	3,859	3,533	4,132	43,660
% Using Safety Belts	67.4%	67.1%	74.4%	75.1%	71.8%	71.7%	78.2%	82.5%	84.9%	85.0%	89.5%	76.4%
Deaths	4	7	11	2	1	6	6	10	2	2	6	57
Using Safety Belts	1	2	5	2	0	0	4	2	1	2	6	25
% Using Safety Belts	25.0%	28.6%	45.5%	100.0%	0.0%	0.0%	66.7%	20.0%	50.0%	100.0%	100.0%	43.9%
Injuries	522	495	509	472	455	441	420	340	333	295	314	4,596
Using Safety Belts	284	269	303	302	255	235	286	255	245	216	259	2,909
% Using Safety Belts	54.4%	54.3%	59.5%	64.0%	56.0%	53.3%	68.1%	75.0%	73.6%	73.2%	82.5%	63.3%
Unharmd or Unknown	5,080	5,401	5,359	5,119	5,057	4,930	4,564	4,637	4,213	3,861	4,295	52,516
Using Safety Belts	3,491	3,689	4,067	3,894	3,703	3,622	3,610	3,855	3,613	3,315	3,867	40,726
% Using Safety Belts	68.7%	68.3%	75.9%	76.1%	73.2%	73.5%	79.1%	83.1%	85.8%	85.9%	90.0%	77.5%

Percent of Occupants Safety Belt Use All Ages



Percent of Occupant Safety Belt Use Deaths: All Ages



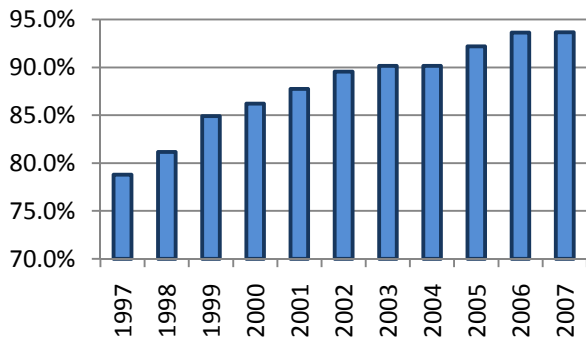
*Excludes occupants in vehicle body types: motorcycle, moped, farm equipment, all-terrain vehicle, bus, train, emergency vehicle, other, and unknown

**Restraint usage: infant, child, or booster seat, with or without airbag deployment.

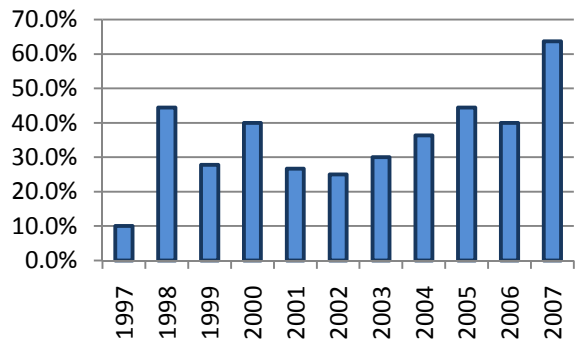
Occupants* 4-13 Years Old in Accidents - Safety Restraint Usage** History

Years												
	1997	1998	1999	2000	2001	2002	2003	2004	2005	2006	2007	Totals
Occupants in Accidents	13,706	14,258	13,789	12,780	12,813	12,415	11,732	11,377	10,122	9,501	10,157	132,650
Occupants Using Safety Belts	10,800	11,574	11,710	11,017	11,241	11,117	10,576	10,258	9,332	8,895	9,515	116,035
% Using Safety Belts	78.8%	81.2%	84.9%	86.2%	87.7%	89.5%	90.1%	90.2%	92.2%	93.6%	93.7%	87.5%
Deaths	10	18	18	15	15	12	10	11	18	5	11	143
Using Safety Belts	1	8	5	6	4	3	3	4	8	2	7	51
% Using Safety Belts	10.0%	44.4%	27.8%	40.0%	26.7%	25.0%	30.0%	36.4%	44.4%	40.0%	63.6%	35.7%
Injuries	1,912	1,909	1,776	1,621	1,653	1,438	1,270	1,161	1,124	1,082	1,027	15,973
Using Safety Belts	1,154	1,216	1,195	1,140	1,188	1,079	990	869	913	872	855	11,471
% Using Safety Belts	60.4%	63.7%	67.3%	70.3%	71.9%	75.0%	78.0%	74.8%	81.2%	80.6%	83.3%	71.8%
Unharmd or Unknown	11,784	12,331	11,995	11,144	11,145	10,965	10,452	10,205	8,980	8,414	9,119	116,534
Using Safety Belts	9,645	10,350	10,510	9,871	10,049	10,035	9,583	9,385	8,411	8,021	8,653	104,513
% Using Safety Belts	81.8%	83.9%	87.6%	88.6%	90.2%	91.5%	91.7%	92.0%	93.7%	95.3%	94.9%	89.7%

Percent of Occupants Safety Belt Use All Ages



Percent of Occupant Safety Belt Use Deaths: All Ages



*Excludes occupants in vehicle body types: motorcycle, moped, farm equipment, all-terrain vehicle, bus, train, emergency vehicle, other, and unknown

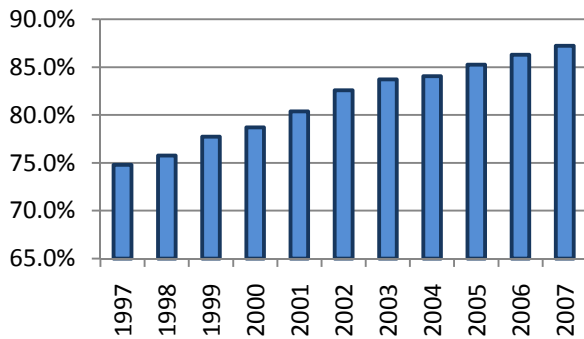
**Excludes airbag only, helmet, eye protection, and unknown restraint use

2007 Kansas Traffic Accidents Facts

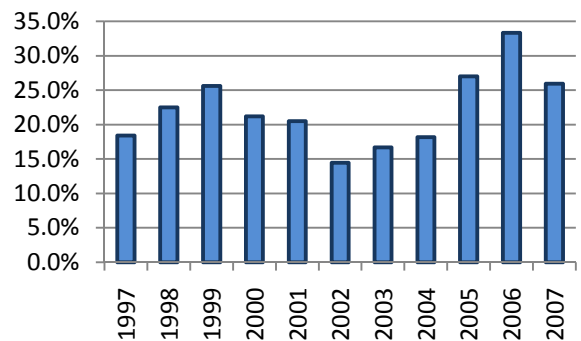
All Occupants* in Accidents - Safety Restraint Usage** History
Where the Speed Limit is Less Than or Equal to 45 mph

Years												
	1997	1998	1999	2000	2001	2002	2003	2004	2005	2006	2007	Totals
Occupants in Accidents	121,064	127,843	127,243	123,290	124,821	123,328	114,191	112,054	102,973	97,409	101,102	1,275,318
Occupants Using Safety Belts	90,550	96,863	98,919	97,020	100,330	101,827	95,583	94,186	87,789	84,070	88,204	1,035,341
% Using Safety Belts	74.8%	75.8%	77.7%	78.7%	80.4%	82.6%	83.7%	84.1%	85.3%	86.3%	87.2%	81.2%
Deaths	76	80	82	66	78	76	72	55	63	75	54	777
Using Safety Belts	14	18	21	14	16	11	12	10	17	25	14	172
% Using Safety Belts	18.4%	22.5%	25.6%	21.2%	20.5%	14.5%	16.7%	18.2%	27.0%	33.3%	25.9%	22.1%
Injuries	17,761	17,837	17,678	16,580	16,677	14,967	13,310	12,553	11,960	11,681	12,038	163,042
Using Safety Belts	11,890	12,081	12,165	11,628	12,002	11,226	10,189	9,808	9,482	9,344	9,929	119,744
% Using Safety Belts	66.9%	67.7%	68.8%	70.1%	72.0%	75.0%	76.6%	78.1%	79.3%	80.0%	82.5%	73.4%
Unharmd or Unknown	103,227	109,926	109,483	106,644	108,066	108,285	100,809	99,446	90,950	85,653	89,010	1,111,499
Using Safety Belts	78,646	84,764	86,733	85,378	88,312	90,590	85,382	84,368	78,290	74,701	78,261	915,425
% Using Safety Belts	76.2%	77.1%	79.2%	80.1%	81.7%	83.7%	84.7%	84.8%	86.1%	87.2%	87.9%	82.4%

Percent of Occupants Safety Belt Use All Ages



Percent of Occupant Safety Belt Use Deaths: All Ages



*Excludes occupants in vehicle body types: motorcycle, moped, farm equipment, all-terrain vehicle, bus, train, emergency vehicle, other, and unknown

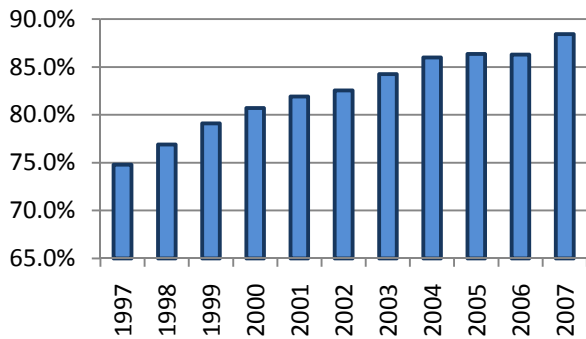
**Excludes airbag only, helmet, eye protection, and unknown restraint use

2007 Kansas Traffic Accidents Facts

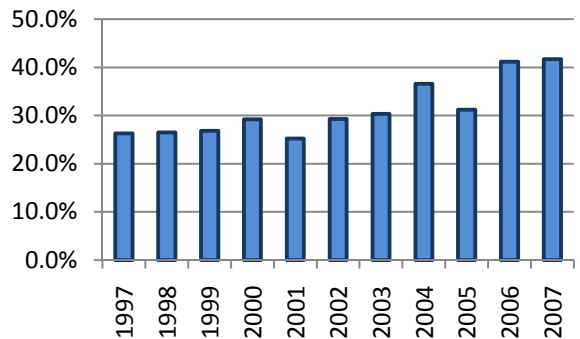
All Occupants* in Accidents - Safety Restraint Usage** History
Where the Speed Limit is Greater Than 45 mph

Years												
	1997	1998	1999	2000	2001	2002	2003	2004	2005	2006	2007	Totals
Occupants in Accidents	51,826	55,148	54,387	51,475	54,271	53,665	52,023	52,477	49,298	47,844	52,848	575,262
Occupants Using Safety Belts	38,768	42,417	43,029	41,539	44,450	44,304	43,822	45,120	42,580	41,277	46,726	474,032
% Using Safety Belts	74.8%	76.9%	79.1%	80.7%	81.9%	82.6%	84.2%	86.0%	86.4%	86.3%	88.4%	82.4%
Deaths	312	321	362	318	337	348	310	331	279	284	283	3,485
Using Safety Belts	82	85	97	93	85	102	94	121	87	117	118	1,081
% Using Safety Belts	26.3%	26.5%	26.8%	29.2%	25.2%	29.3%	30.3%	36.6%	31.2%	41.2%	41.7%	31.0%
Injuries	10,290	10,306	10,060	9,299	9,687	9,602	8,923	8,626	8,418	8,286	8,436	101,933
Using Safety Belts	6,054	6,154	6,366	6,039	6,359	6,358	6,155	6,117	6,131	5,936	6,337	68,006
% Using Safety Belts	58.8%	59.7%	63.3%	64.9%	65.6%	66.2%	69.0%	70.9%	72.8%	71.6%	75.1%	66.7%
Unharmd or Unknown	41,224	44,521	43,965	41,858	44,247	43,715	42,790	43,520	40,601	39,274	44,129	469,844
Using Safety Belts	32,632	36,178	36,566	35,407	38,006	37,844	37,573	38,882	36,362	35,224	40,271	404,945
% Using Safety Belts	79.2%	81.3%	83.2%	84.6%	85.9%	86.6%	87.8%	89.3%	89.6%	89.7%	91.3%	86.2%

Percent of Occupants Safety Belt Use All Ages



Percent of Occupant Safety Belt Use Deaths: All Ages



*Excludes occupants in vehicle body types: motorcycle, moped, farm equipment, all-terrain vehicle, bus, train, emergency vehicle, other, and unknown

**Excludes airbag only, helmet, eye protection, and unknown restraint use