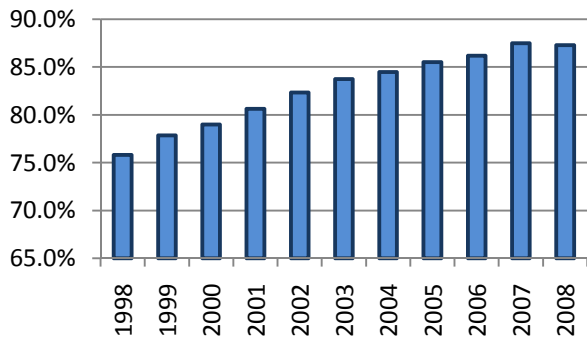


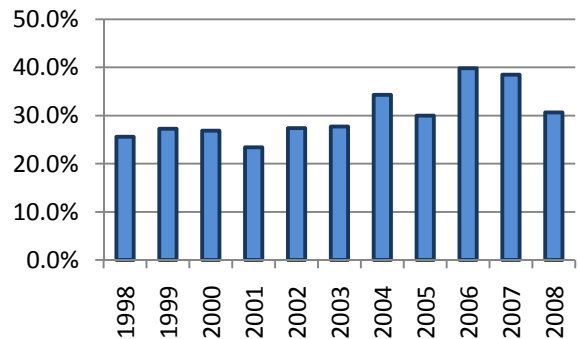
All Occupants* in Accidents - Safety Restraint Usage** History

Years												
	1998	1999	2000	2001	2002	2003	2004	2005	2006	2007	2008	Totals
Occupants in Accidents	191,798	189,573	185,182	184,931	182,785	172,571	170,182	156,147	148,483	157,228	144,926	1,883,806
Occupants Using Safety Belts	145,431	147,565	146,272	149,085	150,526	144,509	143,783	133,528	127,979	137,582	126,487	1,552,747
% Using Safety Belts	75.8%	77.8%	79.0%	80.6%	82.4%	83.7%	84.5%	85.5%	86.2%	87.5%	87.3%	82.4%
Deaths	422	481	409	436	438	400	399	350	364	343	310	4,352
Using Safety Belts	108	131	110	102	120	111	137	105	145	132	95	1,296
% Using Safety Belts	25.6%	27.2%	26.9%	23.4%	27.4%	27.8%	34.3%	30.0%	39.8%	38.5%	30.6%	29.8%
Injuries	29,529	28,897	27,374	27,158	25,295	23,081	21,930	20,871	20,418	20,858	19,068	264,479
Using Safety Belts	19,039	19,235	18,615	18,872	18,073	16,979	16,458	15,976	15,605	16,539	15,082	190,473
% Using Safety Belts	64.5%	66.6%	68.0%	69.5%	71.4%	73.6%	75.0%	76.5%	76.4%	79.3%	79.1%	72.0%
Unharmd or Unknown	161,847	160,195	157,399	157,337	157,052	149,090	147,853	134,926	127,701	136,027	125,548	1,614,975
Using Safety Belts	126,284	128,199	127,547	130,111	132,333	127,419	127,188	117,447	112,229	120,911	111,310	1,360,978
% Using Safety Belts	78.0%	80.0%	81.0%	82.7%	84.3%	85.5%	86.0%	87.0%	87.9%	88.9%	88.7%	84.3%

Percent of Occupants Safety Belt Use All Ages



Percent of Occupant Safety Belt Use Deaths: All Ages



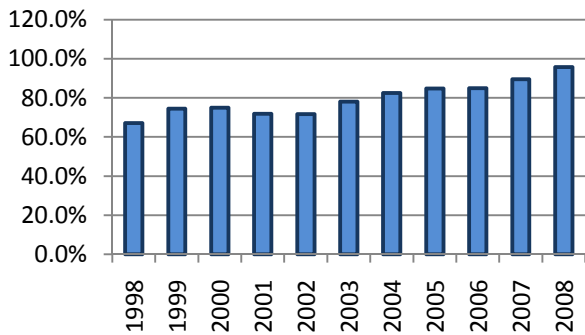
*Excludes occupants in vehicle body types: motorcycle, moped, farm equipment, all-terrain vehicle, bus, train, emergency vehicle, other, and unknown

**Excludes airbag only, helmet, eye protection, and unknown restraint use

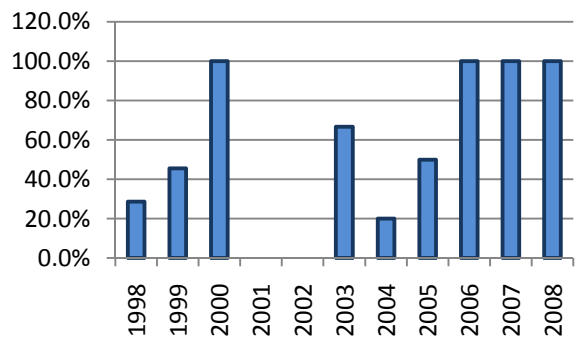
Occupants* 1-3 Years Old in Accidents - Safety Restraint Usage** History

Years												
	1998	1999	2000	2001	2002	2003	2004	2005	2006	2007	2008	Totals
Occupants in Accidents	5,902	5,879	5,593	5,513	5,377	4,990	4,987	4,548	4,158	4,615	3,983	55,545
Occupants Using Safety Belts	3,960	4,375	4,198	3,958	3,857	3,900	4,112	3,859	3,533	4,132	3,814	43,698
% Using Safety Belts	67.1%	74.4%	75.1%	71.8%	71.7%	78.2%	82.5%	84.9%	85.0%	89.5%	95.8%	78.7%
Deaths	7	11	2	1	6	6	10	2	2	6	1	54
Using Safety Belts	2	5	2	0	0	4	2	1	2	6	1	25
% Using Safety Belts	28.6%	45.5%	100.0%	0.0%	0.0%	66.7%	20.0%	50.0%	100.0%	100.0%	100.0%	46.3%
Injuries	495	509	472	455	441	420	340	333	295	314	272	4,346
Using Safety Belts	269	303	302	255	235	286	255	245	216	259	242	2,867
% Using Safety Belts	54.3%	59.5%	64.0%	56.0%	53.3%	68.1%	75.0%	73.6%	73.2%	82.5%	89.0%	66.0%
Unharmd or Unknown	5,400	5,359	5,119	5,057	4,930	4,564	4,637	4,213	3,861	4,295	3,710	51,145
Using Safety Belts	3,689	4,067	3,894	3,703	3,622	3,610	3,855	3,613	3,315	3,867	3,571	40,806
% Using Safety Belts	68.3%	75.9%	76.1%	73.2%	73.5%	79.1%	83.1%	85.8%	85.9%	90.0%	96.3%	79.8%

Percent of Occupants Safety Belt Use All Ages



Percent of Occupant Safety Belt Use Deaths: All Ages



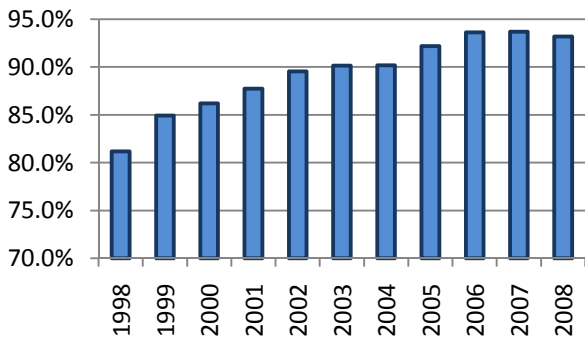
*Excludes occupants in vehicle body types: motorcycle, moped, farm equipment, all-terrain vehicle, bus, train, emergency vehicle, other, and unknown

**Restraint usage: infant, child, or booster seat, with or without airbag deployment.

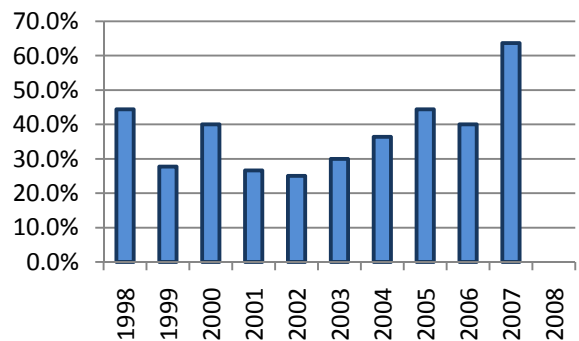
Occupants* 4-13 Years Old in Accidents - Safety Restraint Usage** History

Years												
	1998	1999	2000	2001	2002	2003	2004	2005	2006	2007	2008	Totals
Occupants in Accidents	14,253	13,789	12,780	12,813	12,415	11,732	11,377	10,122	9,501	10,157	9,379	128,318
Occupants Using Safety Belts	11,569	11,710	11,017	11,241	11,117	10,576	10,258	9,332	8,895	9,515	8,741	113,971
% Using Safety Belts	81.2%	84.9%	86.2%	87.7%	89.5%	90.1%	90.2%	92.2%	93.6%	93.7%	93.2%	88.8%
Deaths	18	18	15	15	12	10	11	18	5	11	5	138
Using Safety Belts	8	5	6	4	3	3	4	8	2	7	0	50
% Using Safety Belts	44.4%	27.8%	40.0%	26.7%	25.0%	30.0%	36.4%	44.4%	40.0%	63.6%	0.0%	36.2%
Injuries	1,909	1,776	1,621	1,653	1,438	1,270	1,161	1,124	1,082	1,027	1,007	15,068
Using Safety Belts	1,216	1,195	1,140	1,188	1,079	990	869	913	872	855	848	11,165
% Using Safety Belts	63.7%	67.3%	70.3%	71.9%	75.0%	78.0%	74.8%	81.2%	80.6%	83.3%	84.2%	74.1%
Unharmd or Unknown	12,326	11,995	11,144	11,145	10,965	10,452	10,205	8,980	8,414	9,119	8,367	113,112
Using Safety Belts	10,345	10,510	9,871	10,049	10,035	9,583	9,385	8,411	8,021	8,653	7,893	102,756
% Using Safety Belts	83.9%	87.6%	88.6%	90.2%	91.5%	91.7%	92.0%	93.7%	95.3%	94.9%	94.3%	90.8%

Percent of Occupants Safety Belt Use All Ages



Percent of Occupant Safety Belt Use Deaths: All Ages



*Excludes occupants in vehicle body types: motorcycle, moped, farm equipment, all-terrain vehicle, bus, train, emergency vehicle, other, and unknown

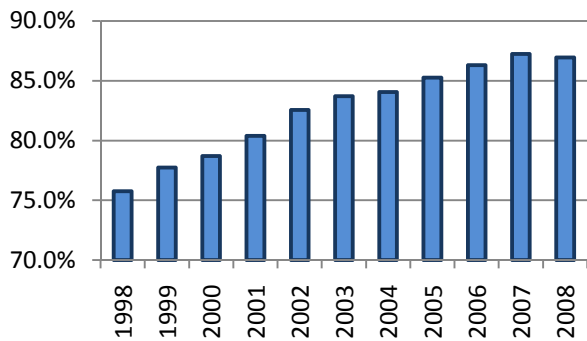
**Excludes airbag only, helmet, eye protection, and unknown restraint use

2008 Kansas Traffic Accidents Facts

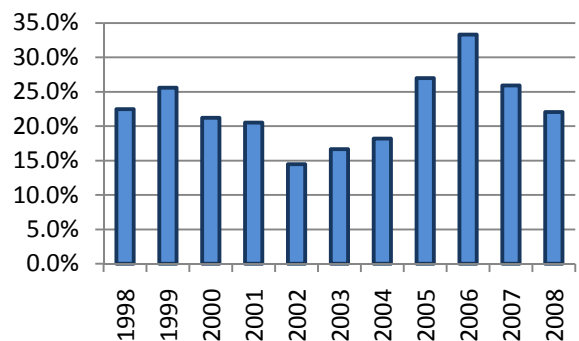
All Occupants* in Accidents - Safety Restraint Usage** History
Where the Speed Limit is Less Than or Equal to 45 mph

Years												
	1998	1999	2000	2001	2002	2003	2004	2005	2006	2007	2008	Totals
Occupants in Accidents	127,822	127,243	123,290	124,821	123,328	114,191	112,054	102,973	97,407	101,102	94,639	1,248,870
Occupants Using Safety Belts	96,844	98,919	97,020	100,330	101,827	95,583	94,186	87,789	84,068	88,204	82,291	1,027,061
% Using Safety Belts	75.8%	77.7%	78.7%	80.4%	82.6%	83.7%	84.1%	85.3%	86.3%	87.2%	87.0%	82.2%
Deaths	80	82	66	78	76	72	55	63	75	54	68	769
Using Safety Belts	18	21	14	16	11	12	10	17	25	14	15	173
% Using Safety Belts	22.5%	25.6%	21.2%	20.5%	14.5%	16.7%	18.2%	27.0%	33.3%	25.9%	22.1%	22.5%
Injuries	17,837	17,678	16,580	16,677	14,967	13,310	12,553	11,960	11,681	12,037	11,335	156,615
Using Safety Belts	12,081	12,165	11,628	12,002	11,226	10,189	9,808	9,482	9,344	9,928	9,309	117,162
% Using Safety Belts	67.7%	68.8%	70.1%	72.0%	75.0%	76.6%	78.1%	79.3%	80.0%	82.5%	82.1%	74.8%
Unharmd or Unknown	109,905	109,483	106,644	108,066	108,285	100,809	99,446	90,950	85,651	89,011	83,236	1,091,486
Using Safety Belts	84,745	86,733	85,378	88,312	90,590	85,382	84,368	78,290	74,699	78,262	72,967	909,726
% Using Safety Belts	77.1%	79.2%	80.1%	81.7%	83.7%	84.7%	84.8%	86.1%	87.2%	87.9%	87.7%	83.3%

Percent of Occupants Safety Belt Use All Ages



Percent of Occupant Safety Belt Use Deaths: All Ages



*Excludes occupants in vehicle body types: motorcycle, moped, farm equipment, all-terrain vehicle, bus, train, emergency vehicle, other, and unknown

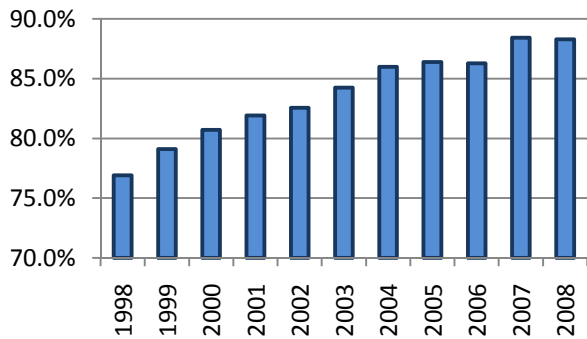
**Excludes airbag only, helmet, eye protection, and unknown restraint use

2008 Kansas Traffic Accidents Facts

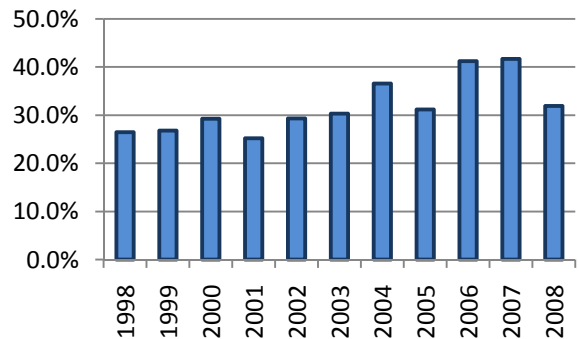
All Occupants* in Accidents - Safety Restraint Usage** History
Where the Speed Limit is Greater Than 45 mph

Years												
	1998	1999	2000	2001	2002	2003	2004	2005	2006	2007	2008	Totals
Occupants in Accidents	55,137	54,387	51,475	54,271	53,665	52,023	52,477	49,298	47,843	52,848	48,004	571,428
Occupants Using Safety Belts	42,406	43,029	41,539	44,450	44,304	43,822	45,120	42,580	41,276	46,726	42,382	477,634
% Using Safety Belts	76.9%	79.1%	80.7%	81.9%	82.6%	84.2%	86.0%	86.4%	86.3%	88.4%	88.3%	83.6%
Deaths	321	362	318	337	348	310	331	279	284	283	238	3,411
Using Safety Belts	85	97	93	85	102	94	121	87	117	118	76	1,075
% Using Safety Belts	26.5%	26.8%	29.2%	25.2%	29.3%	30.3%	36.6%	31.2%	41.2%	41.7%	31.9%	31.5%
Injuries	10,305	10,060	9,299	9,687	9,602	8,923	8,626	8,418	8,286	8,436	7,476	99,118
Using Safety Belts	6,153	6,366	6,039	6,359	6,358	6,155	6,117	6,131	5,936	6,337	5,604	67,555
% Using Safety Belts	59.7%	63.3%	64.9%	65.6%	66.2%	69.0%	70.9%	72.8%	71.6%	75.1%	75.0%	68.2%
Unharmd or Unknown	44,511	43,965	41,858	44,247	43,715	42,790	43,520	40,601	39,273	44,129	40,290	468,899
Using Safety Belts	36,168	36,566	35,407	38,006	37,844	37,573	38,882	36,362	35,223	40,271	36,702	409,004
% Using Safety Belts	81.3%	83.2%	84.6%	85.9%	86.6%	87.8%	89.3%	89.6%	89.7%	91.3%	91.1%	87.2%

Percent of Occupants Safety Belt Use All Ages



Percent of Occupant Safety Belt Use Deaths: All Ages



*Excludes occupants in vehicle body types: motorcycle, moped, farm equipment, all-terrain vehicle, bus, train, emergency vehicle, other, and unknown

**Excludes airbag only, helmet, eye protection, and unknown restraint use