

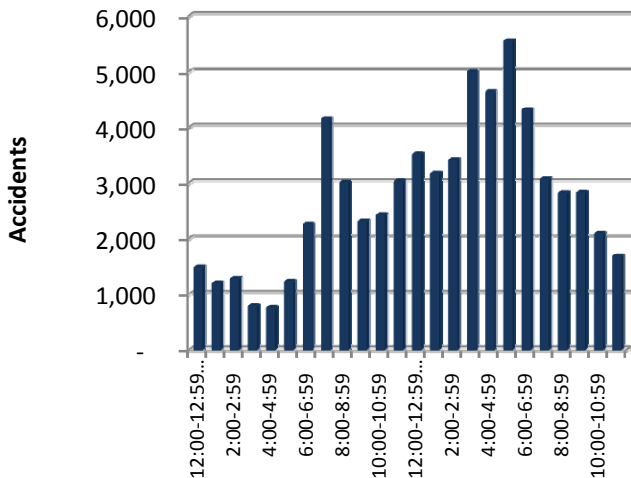
# TIME TRENDS



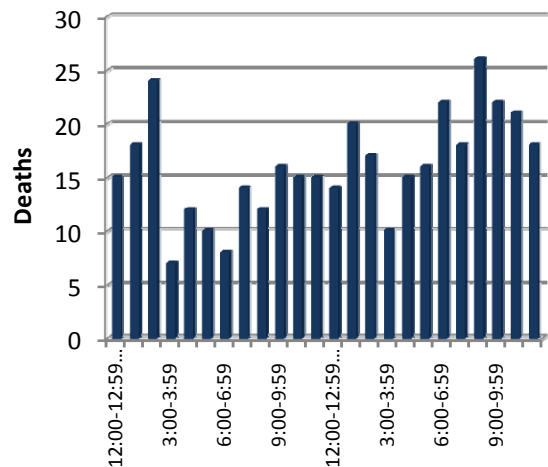
## Hourly

Time	Total Accidents	% of Total	Deaths	% of Deaths
12:00-12:59 AM	1,472	2.2%	15	3.9%
1:00-1:59	1,192	1.8%	18	4.7%
2:00-2:59	1,269	1.9%	24	6.2%
3:00-3:59	778	1.2%	7	1.8%
4:00-4:59	748	1.1%	12	3.1%
5:00-5:59	1,221	1.9%	10	2.6%
6:00-6:59	2,250	3.4%	8	2.1%
7:00-7:59	4,146	6.3%	14	3.6%
8:00-8:59	3,001	4.6%	12	3.1%
9:00-9:59	2,301	3.5%	16	4.2%
10:00-10:59	2,418	3.7%	15	3.9%
11:00-11:59	3,023	4.6%	15	3.9%
12:00-12:59 PM	3,510	5.3%	14	3.6%
1:00-1:59	3,163	4.8%	20	5.2%
2:00-2:59	3,398	5.2%	17	4.4%
3:00-3:59	4,987	7.6%	10	2.6%
4:00-4:59	4,623	7.0%	15	3.9%
5:00-5:59	<b>5,542</b>	<b>8.4%</b>	16	4.2%
6:00-6:59	4,305	6.5%	22	5.7%
7:00-7:59	3,058	4.6%	18	4.7%
8:00-8:59	2,812	4.3%	<b>26</b>	<b>6.8%</b>
9:00-9:59	2,819	4.3%	22	5.7%
10:00-10:59	2,085	3.2%	21	5.5%
11:00-11:59	1,677	2.5%	18	4.7%
Unknown	60	0.1%	0	0.0%
<b>Total</b>	<b>65,858</b>	<b>100%</b>	<b>385</b>	<b>100%</b>

Accidents by Time of Day



Deaths by Time of Day



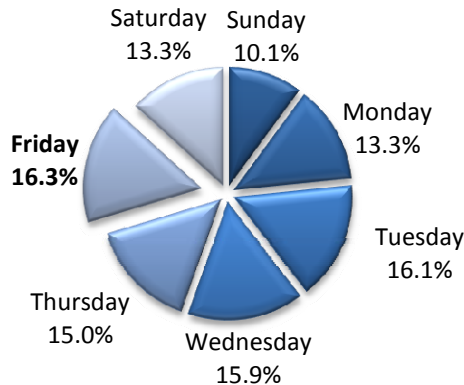
# Time Trends



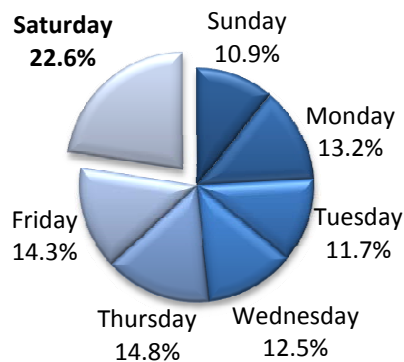
## Daily

Day	Accidents	% of Total	Deaths	% of Total
Sunday	6,676	10.1%	42	10.9%
Monday	8,744	13.3%	51	13.2%
Tuesday	10,603	16.1%	45	11.7%
Wednesday	10,440	15.9%	48	12.5%
Thursday	9,866	15.0%	57	14.8%
Friday	<b>10,747</b>	<b>16.3%</b>	55	14.3%
Saturday	8,741	13.3%	<b>87</b>	<b>22.6%</b>
Unknown	41	0.1%	0	0.0%
<b>Total</b>	<b>65,858</b>	<b>100%</b>	<b>385</b>	<b>100%</b>

## Accidents by Day of Week



## Deaths by Day of Week



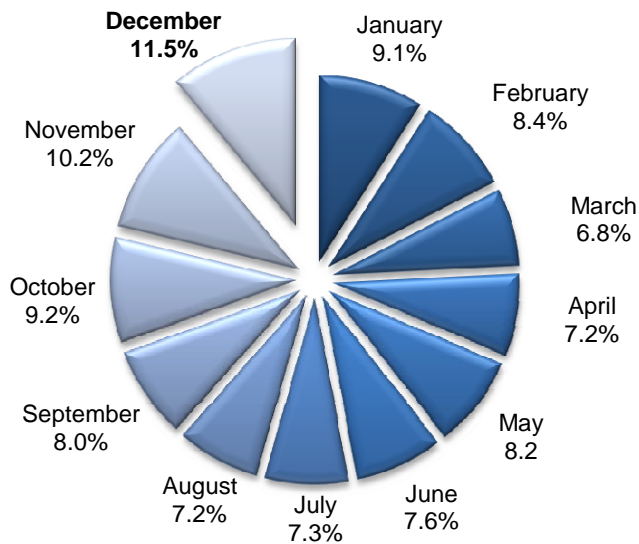
## Time Trends

### Monthly

Month	Accidents	% of Total	Deaths	% of Total
January	5,965	9.1%	20	5.2%
February	5,513	8.4%	26	6.8%
March	4,455	6.8%	26	6.8%
April	4,726	7.2%	26	6.8%
May	5,254	8.0%	35	9.1%
June	5,018	7.6%	29	7.5%
July	4,795	7.3%	37	9.6%
August	4,762	7.2%	41	10.6%
September	5,288	8.0%	35	9.1%
October	6,042	9.2%	43	11.2%
November	6,704	10.2%	26	6.8%
December	7,291	11.1%	41	10.6%
Unknown	45	0.1%	0	0.0%
<b>Total</b>	<b>65,858</b>	<b>100%</b>	<b>385</b>	<b>100%</b>



### Accidents by Month



### Deaths by Month

