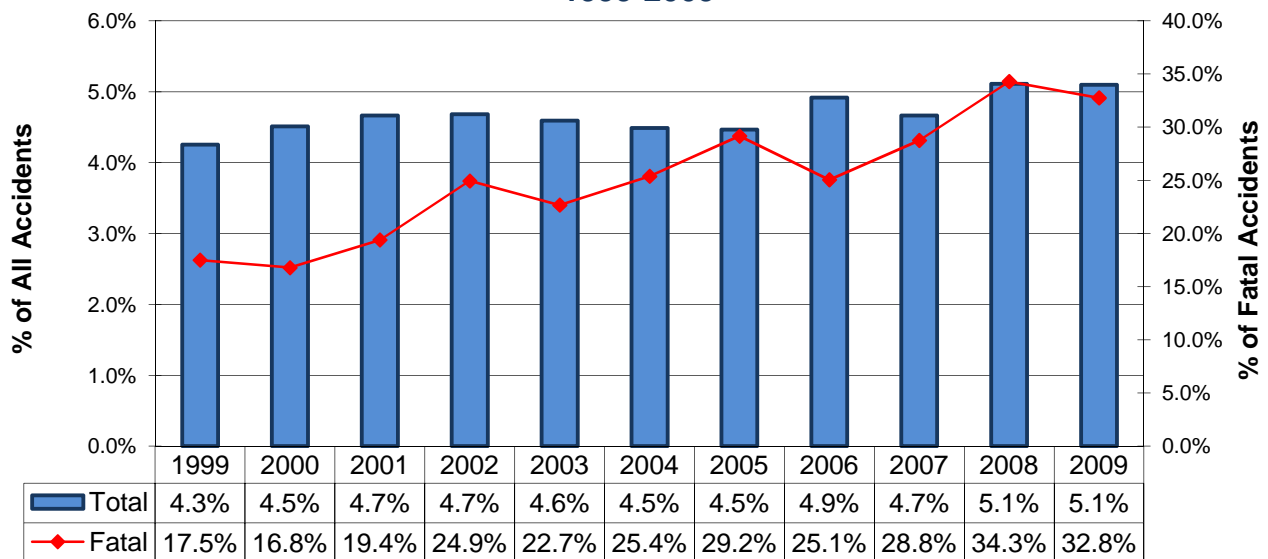


Alcohol-Related Accidents*

| Type | Total | Alcohol-Related | % of All |
|------------------|---------|-----------------|----------|
| Accidents | | | |
| All | 61,173 | 3,120 | 5.1% |
| Fatal | 348 | 114 | 32.8% |
| Injury | 13,925 | 1,339 | 9.6% |
| PDO | 46,900 | 1,667 | 3.6% |
| People | | | |
| All | 140,151 | 5,725 | 4.1% |
| Deaths | 386 | 125 | 32.4% |
| Injuries | 19,674 | 1,921 | 9.8% |
| Unharmed | 120,091 | 3,679 | 3.1% |



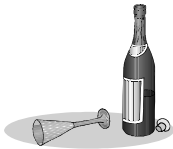
**Alcohol-Related Accident History
1999-2009**



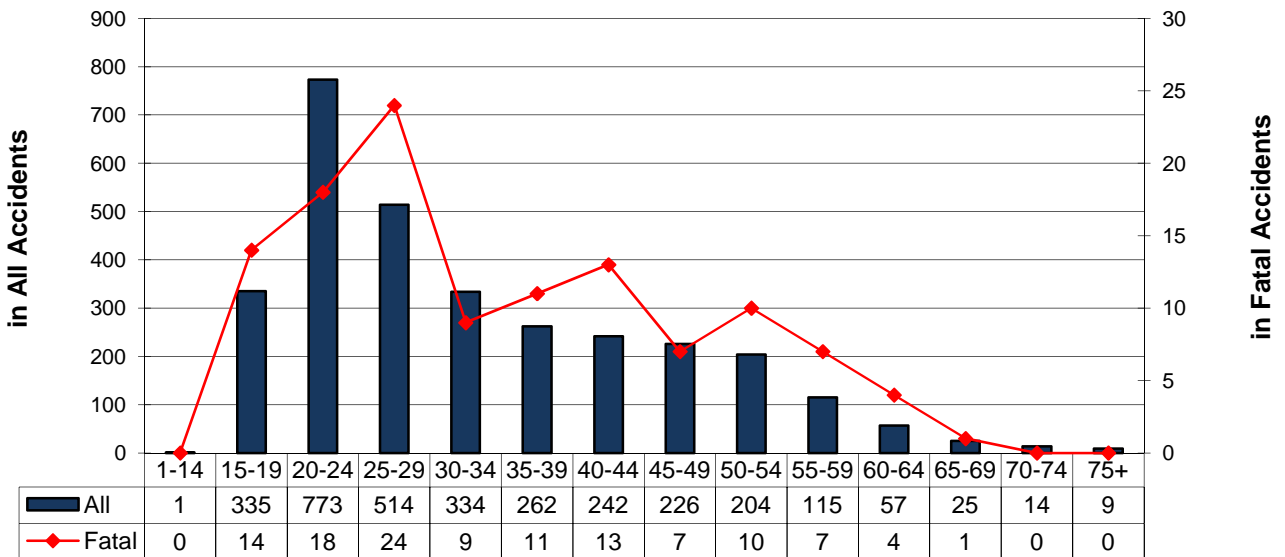
* The alcohol-related accident definition was modified in 2002 and is reflected in all of the data above. See the Definitions pages.

Alcohol-Related Accidents* By Driver Age

| Alcohol-Impaired Driver Ages | Accidents | | | | People | |
|---------------------------------|-----------|-------|--------|-----|--------|---------|
| | Total | Fatal | Injury | PDO | Deaths | Injured |
| Unknown | 57 | 0 | 6 | 51 | 0 | 8 |
| 1-14 | 1 | 0 | 1 | 0 | 0 | 2 |
| 15-19 | 335 | 14 | 147 | 174 | 16 | 223 |
| 1-20 | 469 | 17 | 197 | 255 | 20 | 303 |
| 20-24 | 773 | 18 | 329 | 426 | 21 | 477 |
| 25-29 | 514 | 24 | 207 | 283 | 29 | 297 |
| 30-34 | 334 | 9 | 142 | 183 | 9 | 206 |
| 35-39 | 262 | 11 | 120 | 131 | 11 | 165 |
| 40-44 | 242 | 13 | 115 | 114 | 13 | 157 |
| 45-49 | 226 | 7 | 101 | 118 | 7 | 148 |
| 50-54 | 204 | 10 | 94 | 100 | 11 | 139 |
| 55-59 | 115 | 7 | 50 | 58 | 7 | 71 |
| 60-64 | 57 | 4 | 25 | 28 | 5 | 28 |
| 65-69 | 25 | 1 | 13 | 11 | 1 | 16 |
| 70-74 | 14 | 0 | 5 | 9 | 0 | 6 |
| 75+ | 9 | 0 | 3 | 6 | 0 | 5 |



Alcohol-Impaired Drivers by Age Group



Note: More than one driver per age group can be involved in the same accident.

* The alcohol-related accident definition was modified in 2002 and is reflected in the data above.
See the Definitions pages.

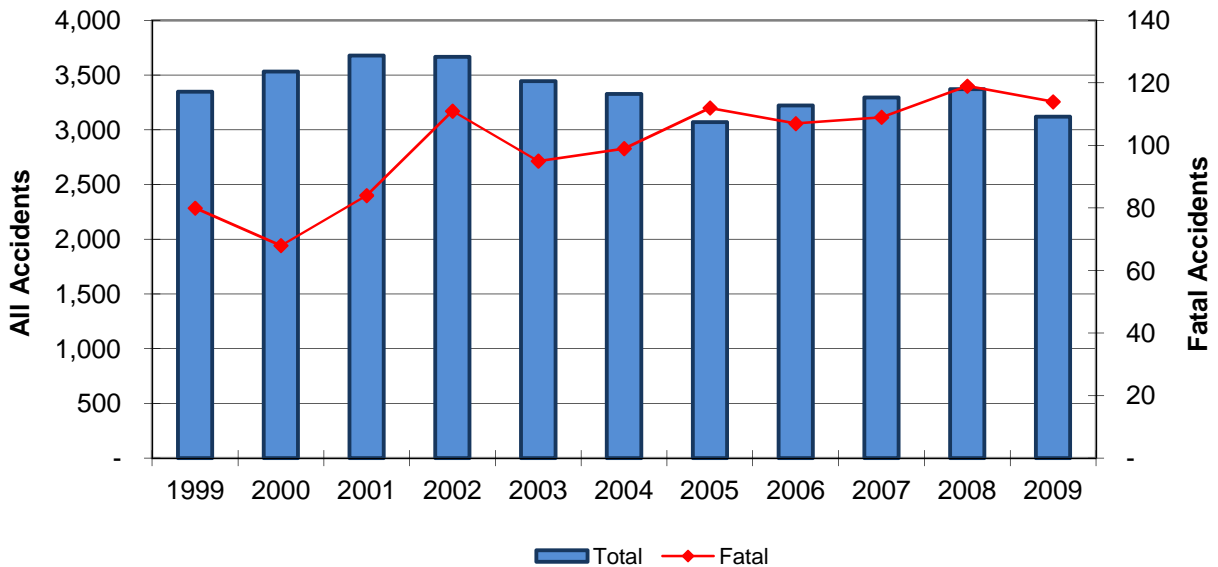
Alcohol-Related Accidents*

1999-2009 Summary

| Year | Accidents | | | | People | |
|--------------|---------------|--------------|---------------|---------------|--------------|---------------|
| | Total | Fatal | Injury | PDO | Deaths | Injuries |
| 1999 | 3,349 | 80 | 1,611 | 1,658 | 94 | 2,483 |
| 2000 | 3,531 | 68 | 1,673 | 1,790 | 80 | 2,533 |
| 2001 | 3,678 | 84 | 1,773 | 1,821 | 100 | 2,562 |
| 2002 | 3,666 | 111 | 1,635 | 1,920 | 129 | 2,419 |
| 2003 | 3,445 | 95 | 1,519 | 1,831 | 105 | 2,285 |
| 2004 | 3,328 | 99 | 1,422 | 1,807 | 117 | 2,014 |
| 2005 | 3,069 | 112 | 1,361 | 1,596 | 119 | 1,959 |
| 2006 | 3,222 | 107 | 1,448 | 1,667 | 118 | 2,062 |
| 2007 | 3,296 | 109 | 1,380 | 1,807 | 119 | 1,949 |
| 2008 | 3,370 | 119 | 1,389 | 1,862 | 130 | 2,004 |
| 2009 | 3,120 | 114 | 1,339 | 1,667 | 125 | 1,921 |
| Total | 37,074 | 1,098 | 16,550 | 19,426 | 1,236 | 24,191 |



1999-2009 Alcohol-Related Accident Summary



* The alcohol-related accident definition was modified in 2002 and is reflected in all of the data above. See the Definitions pages.

Alcohol-Related Accidents*

Involving Alcohol-Impaired Male Drivers

| Year | Accidents | | | | People | |
|--------------|---------------|------------|---------------|---------------|--------------|---------------|
| | Total | Fatal | Injury | PDO | Deaths | Injuries |
| 1999 | 2,817 | 69 | 1,364 | 1,384 | 83 | 2,140 |
| 2000 | 2,969 | 62 | 1,426 | 1,481 | 74 | 2,186 |
| 2001 | 3,113 | 74 | 1,522 | 1,517 | 90 | 2,240 |
| 2002 | 3,044 | 101 | 1,383 | 1,560 | 119 | 2,087 |
| 2003 | 2,814 | 84 | 1,279 | 1,451 | 94 | 1,970 |
| 2004 | 2,710 | 84 | 1,191 | 1,435 | 99 | 1,721 |
| 2005 | 2,542 | 98 | 1,164 | 1,280 | 105 | 1,716 |
| 2006 | 2,631 | 92 | 1,202 | 1,337 | 100 | 1,758 |
| 2007 | 2,674 | 102 | 1,139 | 1,433 | 112 | 1,644 |
| 2008 | 2,738 | 109 | 1,151 | 1,478 | 119 | 1,698 |
| 2009 | 2,558 | 105 | 1,115 | 1,338 | 116 | 1,624 |
| Total | 30,610 | 980 | 13,936 | 15,694 | 1,111 | 20,784 |

Involving Alcohol-Impaired Female Drivers

| Year | Accidents | | | | People | |
|--------------|---------------|------------|--------------|--------------|------------|--------------|
| | Total | Fatal | Injury | PDO | Deaths | Injuries |
| 1999 | 886 | 21 | 461 | 404 | 25 | 813 |
| 2000 | 925 | 19 | 479 | 427 | 25 | 858 |
| 2001 | 966 | 26 | 510 | 430 | 29 | 842 |
| 2002 | 1,017 | 38 | 451 | 528 | 43 | 781 |
| 2003 | 995 | 29 | 451 | 515 | 36 | 785 |
| 2004 | 982 | 31 | 440 | 511 | 41 | 729 |
| 2005 | 862 | 36 | 372 | 454 | 40 | 647 |
| 2006 | 900 | 30 | 435 | 435 | 38 | 718 |
| 2007 | 919 | 22 | 418 | 479 | 23 | 674 |
| 2008 | 934 | 34 | 424 | 476 | 43 | 703 |
| 2009 | 887 | 30 | 404 | 453 | 33 | 669 |
| Total | 10,273 | 316 | 4,845 | 5,112 | 376 | 8,219 |

* The alcohol-related accident definition was modified in 2002 and is reflected in the data above. See the Definitions pages.

Note: There are instances where a female and a male driver were involved in the same accident causing multiple counting in the data above. In addition, drivers whose gender was unknown are excluded.