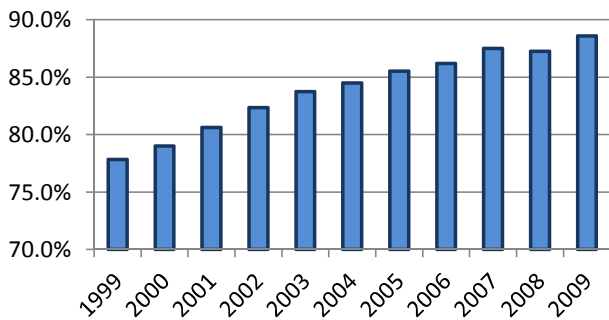


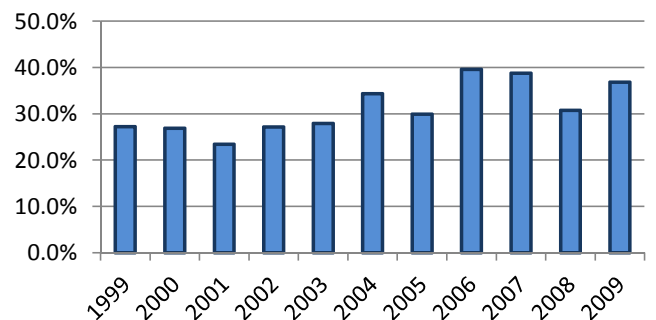
All Occupants* in Accidents - Safety Restraint Usage** History

Years												
	1999	2000	2001	2002	2003	2004	2005	2006	2007	2008	2009	Totals
Occupants in Accidents	189,573	185,183	184,931	182,785	172,657	170,246	156,197	148,654	157,427	145,113	133,655	1,826,421
Occupants Using Safety Belts	147,565	146,273	149,085	150,526	144,587	143,835	133,565	128,109	137,764	126,628	118,389	1,526,326
% Using Safety Belts	77.8%	79.0%	80.6%	82.4%	83.7%	84.5%	85.5%	86.2%	87.5%	87.3%	88.6%	83.6%
Deaths	481	409	436	438	401	399	351	364	343	309	304	4,235
Using Safety Belts	131	110	102	119	112	137	105	144	133	95	112	1,300
% Using Safety Belts	27.2%	26.9%	23.4%	27.2%	27.9%	34.3%	29.9%	39.6%	38.8%	30.7%	36.8%	30.7%
Injuries	28,897	27,374	27,158	25,295	23,088	21,940	20,879	20,435	20,882	19,098	17,821	252,867
Using Safety Belts	19,235	18,615	18,872	18,074	16,986	16,466	15,981	15,613	16,558	15,094	14,156	185,650
% Using Safety Belts	66.6%	68.0%	69.5%	71.5%	73.6%	75.1%	76.5%	76.4%	79.3%	79.0%	79.4%	73.4%
Unharmed or Unknown	160,195	157,400	157,337	157,052	149,168	147,907	134,967	127,855	136,202	125,706	115,530	1,569,319
Using Safety Belts	128,199	127,548	130,111	132,333	127,489	127,232	117,479	112,352	121,073	111,439	104,121	1,339,376
% Using Safety Belts	80.0%	81.0%	82.7%	84.3%	85.5%	86.0%	87.0%	87.9%	88.9%	88.7%	90.1%	85.3%

Percent of Occupants Safety Belt Use All Ages



Percent of Occupant Safety Belt Use Deaths: All Ages



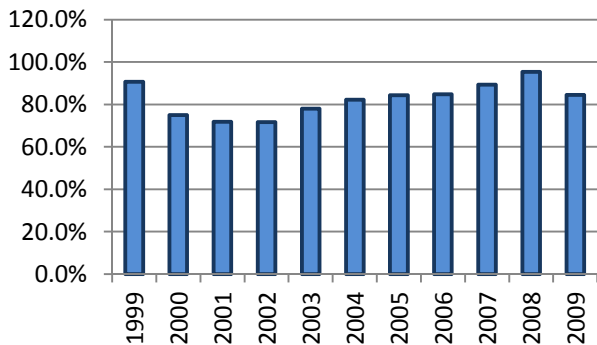
*Excludes occupants in vehicle body types: motorcycle, moped, farm equipment, all-terrain vehicle, bus, train, other, and unknown

**Excludes airbag only, helmet, eye protection, and unknown restraint use

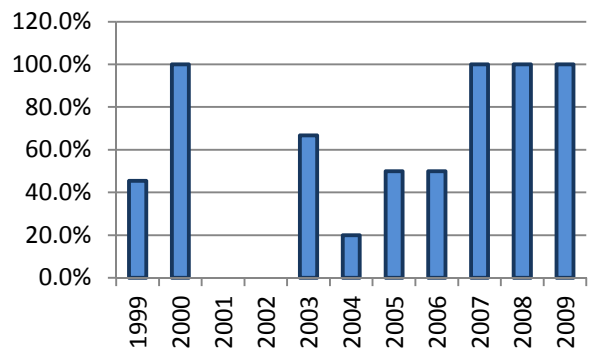
Occupants* 1-3 Years Old in Accidents - Safety Restraint Usage** History

Years												
	1999	2000	2001	2002	2003	2004	2005	2006	2007	2008	2009	Totals
Occupants in Accidents	5,879	5,593	5,513	5,377	4,990	4,987	4,548	4,162	4,615	3,990	3,837	53,491
Occupants Using Safety Belts	5,334	4,198	3,958	3,857	3,892	4,103	3,837	3,529	4,123	3,805	3,243	43,879
% Using Safety Belts	90.7%	75.1%	71.8%	71.7%	78.0%	82.3%	84.4%	84.8%	89.3%	95.4%	84.5%	82.0%
Deaths	11	2	1	6	6	10	2	2	6	1	4	51
Using Safety Belts	5	2	0	0	4	2	1	1	6	1	4	26
% Using Safety Belts	45.5%	100.0%	0.0%	0.0%	66.7%	20.0%	50.0%	50.0%	100.0%	100.0%	100.0%	51.0%
Injuries	509	472	455	441	420	340	333	295	314	275	287	4,141
Using Safety Belts	400	302	255	235	283	254	241	216	257	241	218	2,902
% Using Safety Belts	78.6%	64.0%	56.0%	53.3%	67.4%	74.7%	72.4%	73.2%	81.8%	87.6%	76.0%	70.1%
Unharmd or Unknown	5,359	5,119	5,057	4,930	4,564	4,637	4,213	3,865	4,295	3,714	3,546	49,299
Using Safety Belts	4,929	3,894	3,703	3,622	3,605	3,847	3,595	3,312	3,860	3,563	3,021	40,951
% Using Safety Belts	92.0%	76.1%	73.2%	73.5%	79.0%	83.0%	85.3%	85.7%	89.9%	95.9%	85.2%	83.1%

Percent of Occupants Safety Belt Use All Ages



Percent of Occupant Safety Belt Use Deaths: All Ages



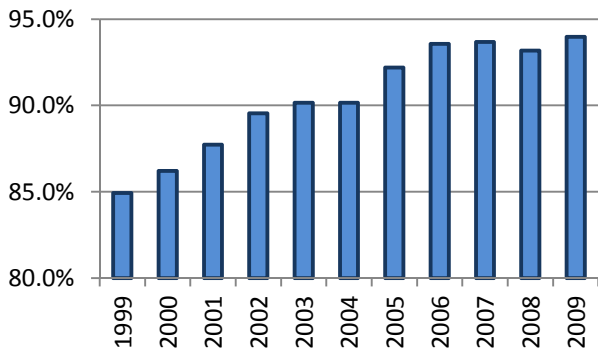
*Excludes occupants in vehicle body types: motorcycle, moped, farm equipment, all-terrain vehicle, bus, train, other, and unknown

**Restraint usage: infant, child, or booster seat, with or without airbag deployment.

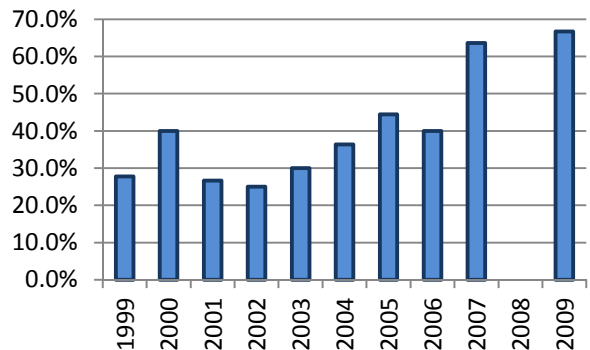
Occupants* 4-13 Years Old in Accidents - Safety Restraint Usage** History

Years												
	1999	2000	2001	2002	2003	2004	2005	2006	2007	2008	2009	Totals
Occupants in Accidents	13,789	12,780	12,813	12,415	11,732	11,377	10,122	9,505	10,163	9,386	8,371	122,453
Occupants Using Safety Belts	11,710	11,017	11,241	11,117	10,576	10,258	9,332	8,894	9,521	8,746	7,866	110,278
% Using Safety Belts	84.9%	86.2%	87.7%	89.5%	90.1%	90.2%	92.2%	93.6%	93.7%	93.2%	94.0%	90.1%
Deaths	18	15	15	12	10	11	18	5	11	5	3	123
Using Safety Belts	5	6	4	3	3	4	8	2	7	0	2	44
% Using Safety Belts	27.8%	40.0%	26.7%	25.0%	30.0%	36.4%	44.4%	40.0%	63.6%	0.0%	66.7%	35.8%
Injuries	1,776	1,621	1,653	1,438	1,270	1,161	1,124	1,082	1,029	1,009	920	14,083
Using Safety Belts	1,195	1,140	1,188	1,079	990	869	913	872	857	848	782	10,733
% Using Safety Belts	67.3%	70.3%	71.9%	75.0%	78.0%	74.8%	81.2%	80.6%	83.3%	84.0%	85.0%	76.2%
Unharmd or Unknown	11,995	11,144	11,145	10,965	10,452	10,205	8,980	8,418	9,123	8,372	7,448	108,247
Using Safety Belts	10,510	9,871	10,049	10,035	9,583	9,385	8,411	8,020	8,657	7,898	7,082	99,501
% Using Safety Belts	87.6%	88.6%	90.2%	91.5%	91.7%	92.0%	93.7%	95.3%	94.9%	94.3%	95.1%	91.9%

Percent of Occupants Safety Belt Use All Ages



Percent of Occupant Safety Belt Use Deaths: All Ages



*Excludes occupants in vehicle body types: motorcycle, moped, farm equipment, all-terrain vehicle, bus, train, other, and unknown

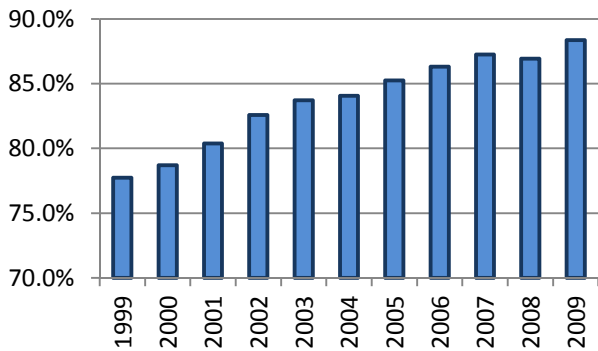
**Excludes airbag only, helmet, eye protection, and unknown restraint use

2009 Kansas Traffic Accidents Facts

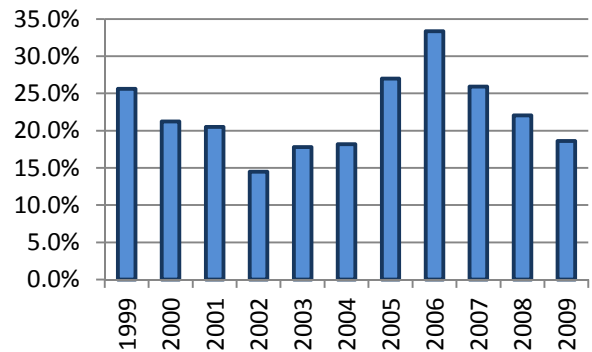
All Occupants* in Accidents - Safety Restraint Usage** History
Where the Speed Limit is Less Than or Equal to 45 mph

Years												
	1999	2000	2001	2002	2003	2004	2005	2006	2007	2008	2009	Totals
Occupants in Accidents	127,254	123,298	124,826	123,339	114,249	112,097	103,000	97,538	101,197	94,793	85,213	1,206,804
Occupants Using Safety Belts	98,929	97,023	100,335	101,839	95,635	94,220	87,812	84,176	88,292	82,400	75,286	1,005,947
% Using Safety Belts	77.7%	78.7%	80.4%	82.6%	83.7%	84.1%	85.3%	86.3%	87.2%	86.9%	88.4%	83.4%
Deaths	82	66	78	76	73	55	63	75	54	68	43	733
Using Safety Belts	21	14	16	11	13	10	17	25	14	15	8	164
% Using Safety Belts	25.6%	21.2%	20.5%	14.5%	17.8%	18.2%	27.0%	33.3%	25.9%	22.1%	18.6%	22.4%
Injuries	17,679	16,581	16,679	14,970	13,313	12,557	11,965	11,692	12,046	11,356	10,380	149,218
Using Safety Belts	12,165	11,629	12,004	11,229	10,193	9,810	9,484	9,350	9,934	9,315	8,540	113,653
% Using Safety Belts	68.8%	70.1%	72.0%	75.0%	76.6%	78.1%	79.3%	80.0%	82.5%	82.0%	82.3%	76.2%
Unharmred or Unknown	109,493	106,651	108,069	108,293	100,863	99,485	90,972	85,771	89,097	83,369	74,790	1,056,853
Using Safety Belts	86,743	85,380	88,315	90,599	85,429	84,400	78,311	74,801	78,344	73,070	66,738	892,130
% Using Safety Belts	79.2%	80.1%	81.7%	83.7%	84.7%	84.8%	86.1%	87.2%	87.9%	87.6%	89.2%	84.4%

Percent of Occupants Safety Belt Use All Ages



Percent of Occupant Safety Belt Use Deaths: All Ages



*Excludes occupants in vehicle body types: motorcycle, moped, farm equipment, all-terrain vehicle, bus, train, other, and unknown

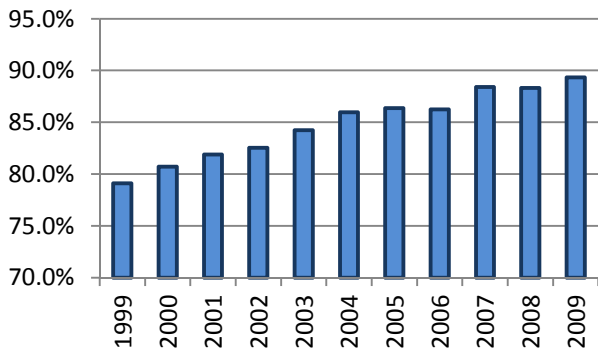
**Excludes airbag only, helmet, eye protection, and unknown restraint use

2009 Kansas Traffic Accidents Facts

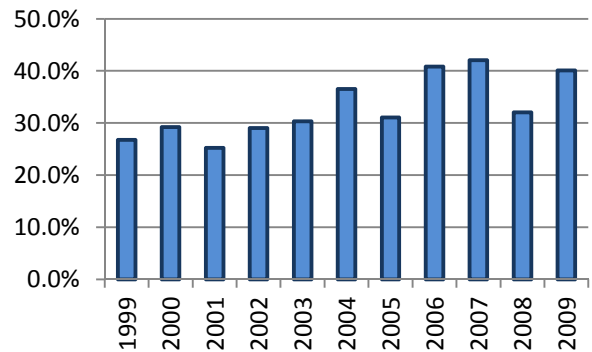
All Occupants* in Accidents - Safety Restraint Usage** History
Where the Speed Limit is Greater Than 45 mph

Years												
	1999	2000	2001	2002	2003	2004	2005	2006	2007	2008	2009	Totals
Occupants in Accidents	54,376	51,463	54,266	53,646	52,043	52,494	49,308	47,874	52,938	48,031	45,658	562,097
Occupants Using Safety Belts	43,019	41,532	44,445	44,285	43,842	45,136	42,585	41,295	46,808	42,412	40,785	476,144
% Using Safety Belts	79.1%	80.7%	81.9%	82.6%	84.2%	86.0%	86.4%	86.3%	88.4%	88.3%	89.3%	84.7%
Deaths	362	318	337	348	310	331	280	284	283	237	257	3,347
Using Safety Belts	97	93	85	101	94	121	87	116	119	76	103	1,092
% Using Safety Belts	26.8%	29.2%	25.2%	29.0%	30.3%	36.6%	31.1%	40.8%	42.0%	32.1%	40.1%	32.6%
Injuries	10,059	9,298	9,685	9,599	8,926	8,632	8,420	8,290	8,452	7,483	7,118	95,962
Using Safety Belts	6,366	6,038	6,357	6,356	6,158	6,123	6,134	5,937	6,351	5,609	5,379	66,808
% Using Safety Belts	63.3%	64.9%	65.6%	66.2%	69.0%	70.9%	72.9%	71.6%	75.1%	75.0%	75.6%	69.6%
Unharmred or Unknown	43,955	41,847	44,244	43,699	42,807	43,531	40,608	39,300	44,203	40,311	38,283	462,788
Using Safety Belts	36,556	35,401	38,003	37,828	37,590	38,892	36,364	35,242	40,338	36,727	35,303	408,244
% Using Safety Belts	83.2%	84.6%	85.9%	86.6%	87.8%	89.3%	89.5%	89.7%	91.3%	91.1%	92.2%	88.2%

Percent of Occupants Safety Belt Use All Ages



Percent of Occupant Safety Belt Use Deaths: All Ages



*Excludes occupants in vehicle body types: motorcycle, moped, farm equipment, all-terrain vehicle, bus, train, other, and unknown

**Excludes airbag only, helmet, eye protection, and unknown restraint use