

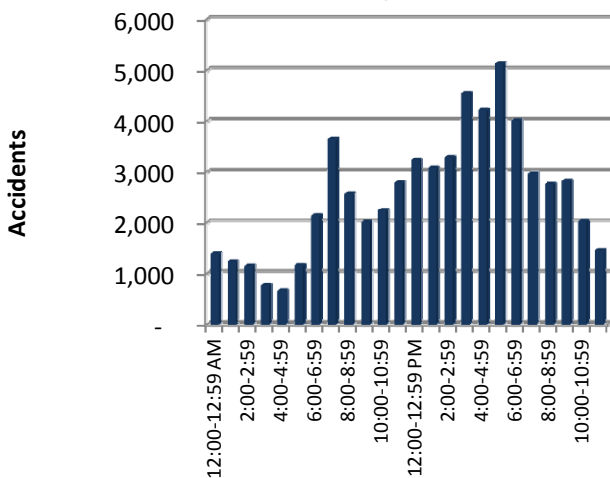
TIME TRENDS



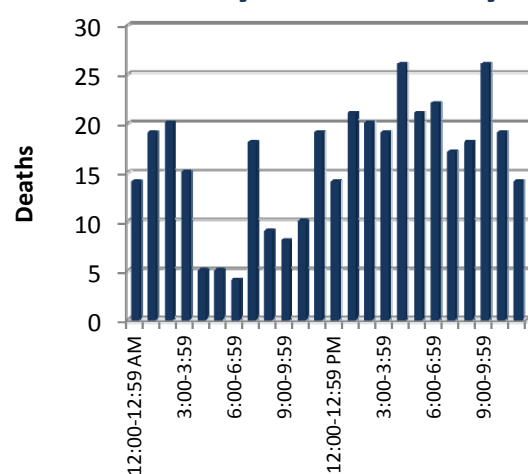
Hourly

Time	Total Accidents	% of Total	Deaths	% of Deaths
12:00-12:59 AM	1,378	2.3%	14	3.6%
1:00-1:59	1,215	2.0%	19	4.9%
2:00-2:59	1,142	1.9%	20	5.2%
3:00-3:59	760	1.2%	15	3.9%
4:00-4:59	647	1.1%	5	1.3%
5:00-5:59	1,153	1.9%	5	1.3%
6:00-6:59	2,129	3.5%	4	1.0%
7:00-7:59	3,634	5.9%	18	4.7%
8:00-8:59	2,550	4.2%	9	2.3%
9:00-9:59	1,997	3.3%	8	2.1%
10:00-10:59	2,233	3.7%	10	2.6%
11:00-11:59	2,770	4.5%	19	4.9%
12:00-12:59 PM	3,220	5.3%	14	3.6%
1:00-1:59	3,067	5.0%	21	5.4%
2:00-2:59	3,273	5.4%	20	5.2%
3:00-3:59	4,537	7.4%	19	4.9%
4:00-4:59	4,204	6.9%	26	6.7%
5:00-5:59	5,120	8.4%	21	5.4%
6:00-6:59	4,000	6.5%	22	5.7%
7:00-7:59	2,948	4.8%	17	4.4%
8:00-8:59	2,746	4.5%	18	4.7%
9:00-9:59	2,812	4.6%	26	6.7%
10:00-10:59	2,010	3.3%	19	4.9%
11:00-11:59	1,436	2.3%	14	3.6%
Unknown	192	0.3%	3	0.8%
Total	61,173	100%	386	100%

Accidents by Time of Day



Deaths by Time of Day



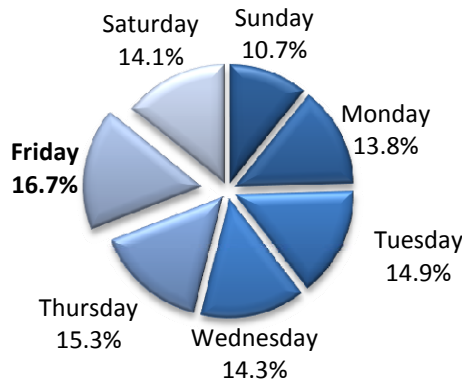
Time Trends



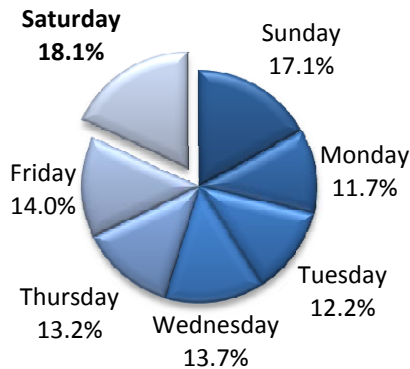
Daily

Day	Accidents	% of Total	Deaths	% of Total
Sunday	6,540	10.7%	66	17.1%
Monday	8,443	13.8%	45	11.7%
Tuesday	9,130	14.9%	47	12.2%
Wednesday	8,771	14.3%	53	13.7%
Thursday	9,365	15.3%	51	13.2%
Friday	10,216	16.7%	54	14.0%
Saturday	8,645	14.1%	70	18.1%
Unknown	63	0.1%	0	0.0%
Total	61,173	100%	386	100%

Accidents by Day of Week



Deaths by Day of Week



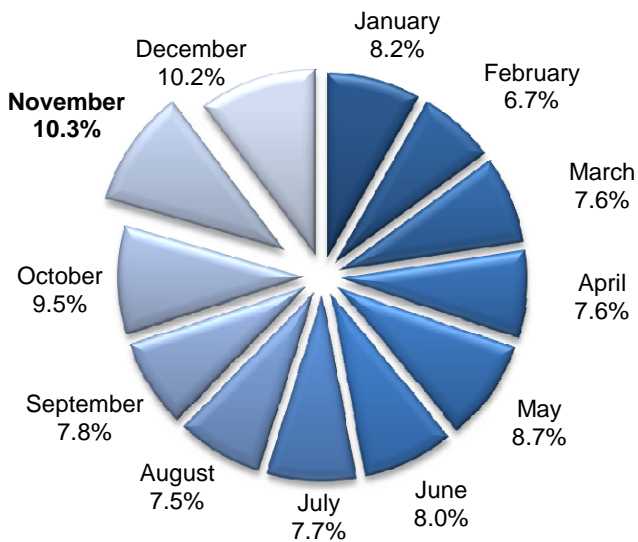
Time Trends

Monthly



Month	Accidents	% of Total	Deaths	% of Total
January	5,025	8.2%	28	7.3%
February	4,111	6.7%	29	7.5%
March	4,666	7.6%	30	7.8%
April	4,671	7.6%	26	6.7%
May	5,351	8.7%	35	9.1%
June	4,884	8.0%	45	11.7%
July	4,727	7.7%	34	8.8%
August	4,594	7.5%	38	9.8%
September	4,747	7.8%	25	6.5%
October	5,790	9.5%	32	8.3%
November	6,285	10.3%	28	7.3%
December	6,262	10.2%	36	9.3%
Unknown	60	0.1%	0	0.0%
Total	61,173	100%	386	100%

Accidents by Month



Deaths by Month

