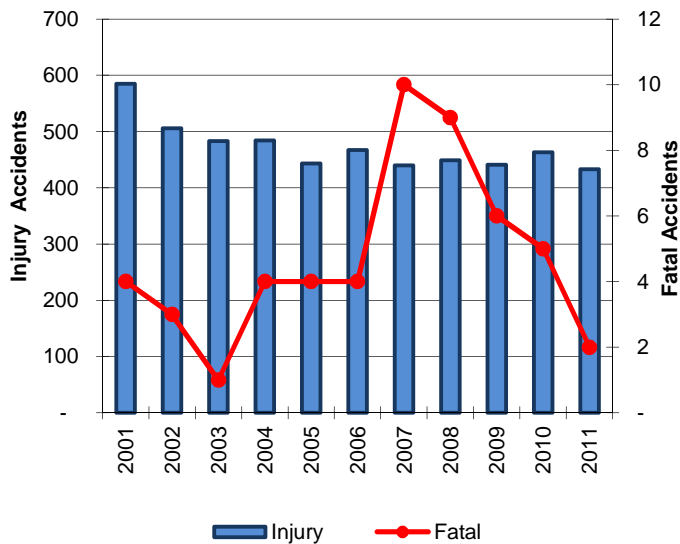


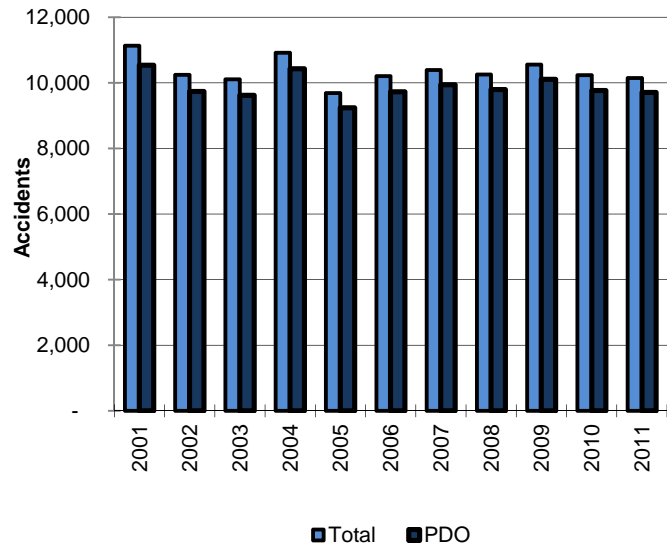
## Deer Accidents

Year	Accidents				People	
	Total	Fatal	Injury	PDO	Deaths	Injuries
2001	11,125	4	585	10,536	4	726
2002	10,241	3	506	9,732	3	616
2003	10,104	1	483	9,620	1	598
2004	10,909	4	484	10,421	4	598
2005	9,682	4	443	9,235	4	566
2006	10,197	4	467	9,726	4	580
2007	10,383	10	440	9,933	10	538
2008	10,247	9	449	9,789	9	545
2009	10,551	6	441	10,104	7	529
2010	10,232	5	463	9,764	5	555
2011	10,139	2	433	9,704	2	523
<b>Total</b>	<b>113,810</b>	<b>52</b>	<b>5,194</b>	<b>108,564</b>	<b>53</b>	<b>6,374</b>

Injury & Fatal Deer Accidents



Total & PDO Deer Accidents



In 2011, 16.9% of all accidents in Kansas involved striking deer.

# TOTAL ACCIDENTS AND DEER ACCIDENTS BY COUNTY 2011

