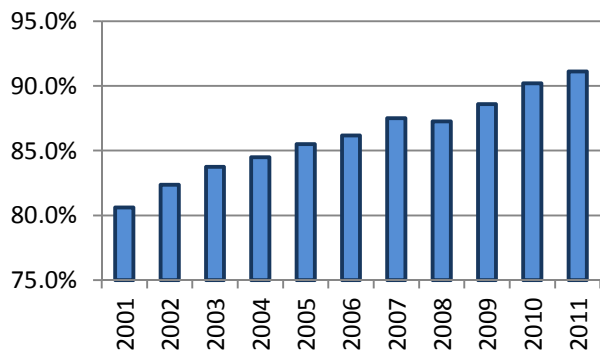


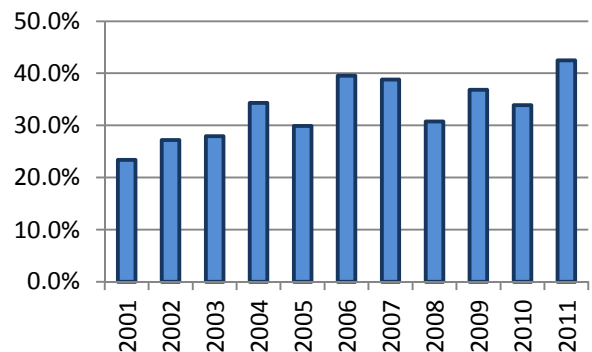
## All Occupants\* in Accidents - Safety Restraint Usage\*\* History

Years												
	2001	2002	2003	2004	2005	2006	2007	2008	2009	2010	2011	Totals
Occupants in Accidents	184,931	182,785	172,657	170,246	156,197	148,654	157,427	145,113	133,655	131,876	128,834	1,712,375
Occupants Using Safety Belts	149,085	150,526	144,587	143,835	133,565	128,109	137,764	126,628	118,389	118,937	117,389	1,468,814
% Using Safety Belts	80.6%	82.4%	83.7%	84.5%	85.5%	86.2%	87.5%	87.3%	88.6%	90.2%	91.1%	85.8%
Deaths	436	438	401	399	351	364	343	309	304	363	313	4,021
Using Safety Belts	102	119	112	137	105	144	133	95	112	123	133	1,315
% Using Safety Belts	23.4%	27.2%	27.9%	34.3%	29.9%	39.6%	38.8%	30.7%	36.8%	33.9%	42.5%	32.7%
Injuries	27,158	25,295	23,088	21,940	20,879	20,435	20,882	19,098	17,821	17,224	16,604	230,424
Using Safety Belts	18,872	18,074	16,986	16,466	15,981	15,613	16,558	15,094	14,156	14,200	13,999	175,999
% Using Safety Belts	69.5%	71.5%	73.6%	75.1%	76.5%	76.4%	79.3%	79.0%	79.4%	82.4%	84.3%	76.4%
Unharmful or Unknown	157,337	157,052	149,168	147,907	134,967	127,855	136,202	125,706	115,530	114,289	111,917	1,477,930
Using Safety Belts	130,111	132,333	127,489	127,232	117,479	112,352	121,073	111,439	104,121	104,614	103,257	1,291,500
% Using Safety Belts	82.7%	84.3%	85.5%	86.0%	87.0%	87.9%	88.9%	88.7%	90.1%	91.5%	92.3%	87.4%

**Percent of Occupants Safety Belt Use All Ages**



**Percent of Occupant Safety Belt Use Deaths: All Ages**



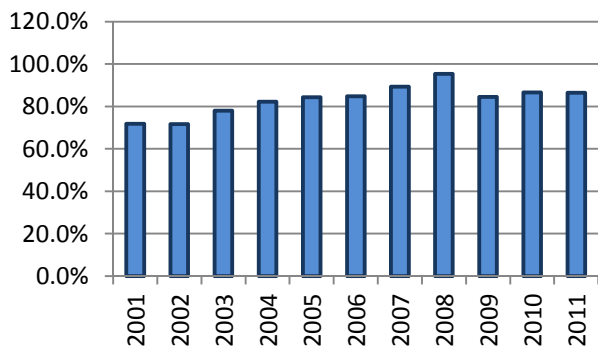
\*Excludes occupants in vehicle body types: motorcycle, moped, farm equipment, all-terrain vehicle, bus, train, other, and unknown

\*\*Excludes airbag only, helmet, eye protection, and unknown restraint use

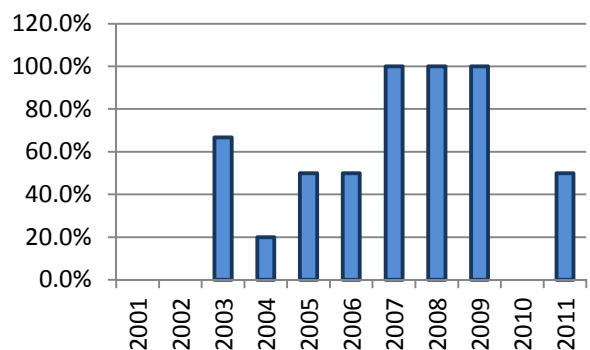
## Occupants\* 1-3 Years Old in Accidents - Safety Restraint Usage\*\* History

Years												
	2001	2002	2003	2004	2005	2006	2007	2008	2009	2010	2011	Totals
Occupants in Accidents	5,513	5,377	4,990	4,987	4,548	4,162	4,615	3,990	3,837	3,261	3,528	48,808
Occupants Using Safety Belts	3,958	3,857	3,892	4,103	3,837	3,529	4,123	3,805	3,243	2,823	3,050	40,220
% Using Safety Belts	71.8%	71.7%	78.0%	82.3%	84.4%	84.8%	89.3%	95.4%	84.5%	86.6%	86.5%	82.4%
Deaths	1	6	6	10	2	2	6	1	4	2	4	44
Using Safety Belts	0	0	4	2	1	1	6	1	4	0	2	21
% Using Safety Belts	0.0%	0.0%	66.7%	20.0%	50.0%	50.0%	100.0%	100.0%	100.0%	0.0%	50.0%	47.7%
Injuries	455	441	420	340	333	295	314	275	287	205	270	3,635
Using Safety Belts	255	235	283	254	241	216	257	241	218	163	218	2,581
% Using Safety Belts	56.0%	53.3%	67.4%	74.7%	72.4%	73.2%	81.8%	87.6%	76.0%	79.5%	80.7%	71.0%
Unharmd or Unknown	5,057	4,930	4,564	4,637	4,213	3,865	4,295	3,714	3,546	3,054	3,254	45,129
Using Safety Belts	3,703	3,622	3,605	3,847	3,595	3,312	3,860	3,563	3,021	2,660	2,830	37,618
% Using Safety Belts	73.2%	73.5%	79.0%	83.0%	85.3%	85.7%	89.9%	95.9%	85.2%	87.1%	87.0%	83.4%

**Percent of Occupants Safety Belt Use All Ages**



**Percent of Occupant Safety Belt Use Deaths: All Ages**



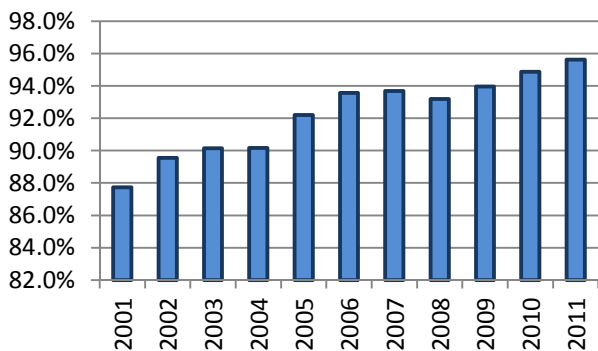
\*Excludes occupants in vehicle body types: motorcycle, moped, farm equipment, all-terrain vehicle, bus, train, other, and unknown

\*\*Restraint usage: infant, child, or booster seat, with or without airbag deployment.

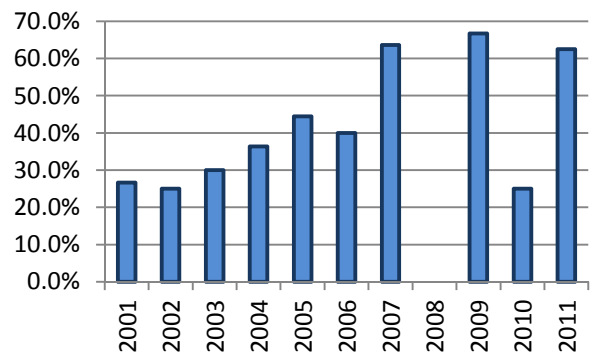
## Occupants\* 4-13 Years Old in Accidents - Safety Restraint Usage\*\* History

Years												
	2001	2002	2003	2004	2005	2006	2007	2008	2009	2010	2011	Totals
Occupants in Accidents	12,813	12,415	11,732	11,377	10,122	9,505	10,163	9,386	8,371	6,654	7,641	110,179
Occupants Using Safety Belts	11,241	11,117	10,576	10,258	9,332	8,894	9,521	8,746	7,866	6,313	7,307	101,171
% Using Safety Belts	87.7%	89.5%	90.1%	90.2%	92.2%	93.6%	93.7%	93.2%	94.0%	94.9%	95.6%	91.8%
Deaths	15	12	10	11	18	5	11	5	3	4	8	102
Using Safety Belts	4	3	3	4	8	2	7	0	2	1	5	39
% Using Safety Belts	26.7%	25.0%	30.0%	36.4%	44.4%	40.0%	63.6%	0.0%	66.7%	25.0%	62.5%	38.2%
Injuries	1,653	1,438	1,270	1,161	1,124	1,082	1,029	1,009	920	689	785	12,160
Using Safety Belts	1,188	1,079	990	869	913	872	857	848	782	601	709	9,708
% Using Safety Belts	71.9%	75.0%	78.0%	74.8%	81.2%	80.6%	83.3%	84.0%	85.0%	87.2%	90.3%	79.8%
Unharmd or Unknown	11,145	10,965	10,452	10,205	8,980	8,418	9,123	8,372	7,448	5,961	6,848	97,917
Using Safety Belts	10,049	10,035	9,583	9,385	8,411	8,020	8,657	7,898	7,082	5,711	6,593	91,424
% Using Safety Belts	90.2%	91.5%	91.7%	92.0%	93.7%	95.3%	94.9%	94.3%	95.1%	95.8%	96.3%	93.4%

**Percent of Occupants Safety Belt Use All Ages**



**Percent of Occupant Safety Belt Use Deaths: All Ages**



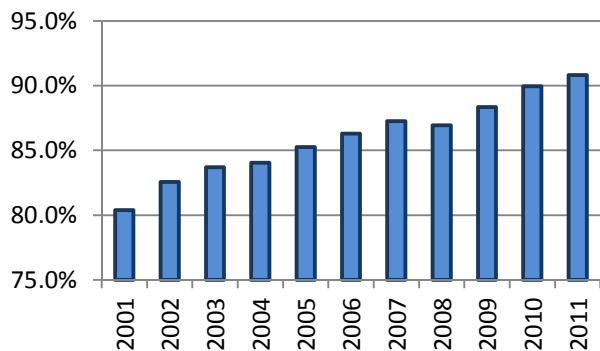
\*Excludes occupants in vehicle body types: motorcycle, moped, farm equipment, all-terrain vehicle, bus, train, other, and unknown

\*\*Excludes airbag only, helmet, eye protection, and unknown restraint use

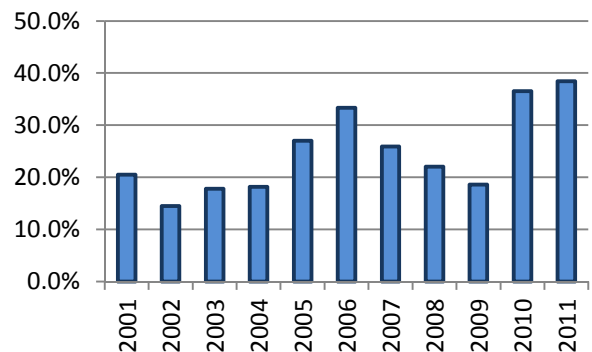
## All Occupants\* in Accidents - Safety Restraint Usage\*\* History Where the Speed Limit is Less Than or Equal to 45 mph

Years												
	2001	2002	2003	2004	2005	2006	2007	2008	2009	2010	2011	Totals
Occupants in Accidents	124,826	123,339	114,249	112,097	103,000	97,538	101,197	94,793	85,213	81,822	80,709	1,118,783
Occupants Using Safety Belts	100,335	101,839	95,635	94,220	87,812	84,176	88,292	82,400	75,286	73,602	73,299	956,896
% Using Safety Belts	80.4%	82.6%	83.7%	84.1%	85.3%	86.3%	87.2%	86.9%	88.4%	90.0%	90.8%	85.5%
Deaths	78	76	73	55	63	75	54	68	43	63	52	700
Using Safety Belts	16	11	13	10	17	25	14	15	8	23	20	172
% Using Safety Belts	20.5%	14.5%	17.8%	18.2%	27.0%	33.3%	25.9%	22.1%	18.6%	36.5%	38.5%	24.6%
Injuries	16,679	14,970	13,313	12,557	11,965	11,692	12,046	11,356	10,380	9,594	9,446	133,998
Using Safety Belts	12,004	11,229	10,193	9,810	9,484	9,350	9,934	9,315	8,540	8,164	8,217	106,240
% Using Safety Belts	72.0%	75.0%	76.6%	78.1%	79.3%	80.0%	82.5%	82.0%	82.3%	85.1%	87.0%	79.3%
Unharmd or Unknown	108,069	108,293	100,863	99,485	90,972	85,771	89,097	83,369	74,790	72,165	71,211	984,085
Using Safety Belts	88,315	90,599	85,429	84,400	78,311	74,801	78,344	73,070	66,738	65,415	65,062	850,484
% Using Safety Belts	81.7%	83.7%	84.7%	84.8%	86.1%	87.2%	87.9%	87.6%	89.2%	90.6%	91.4%	86.4%

**Percent of Occupants Safety Belt Use All Ages**



**Percent of Occupant Safety Belt Use Deaths: All Ages**



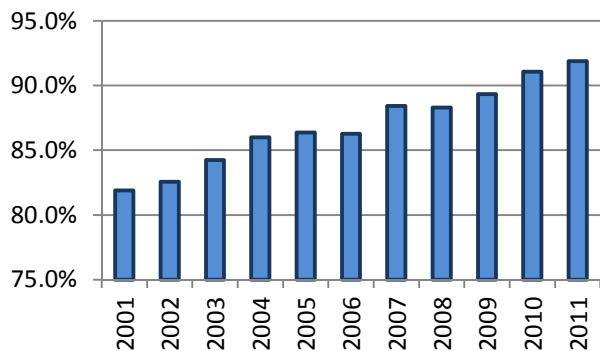
\*Excludes occupants in vehicle body types: motorcycle, moped, farm equipment, all-terrain vehicle, bus, train, other, and unknown

\*\*Excludes airbag only, helmet, eye protection, and unknown restraint use

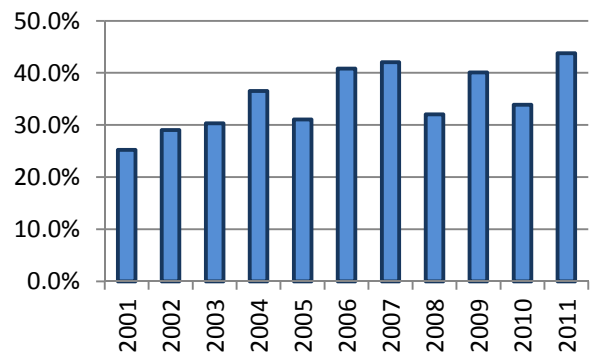
## All Occupants\* in Accidents - Safety Restraint Usage\*\* History Where the Speed Limit is Greater Than 45 mph

Years												
	2001	2002	2003	2004	2005	2006	2007	2008	2009	2010	2011	Totals
Occupants in Accidents	54,266	53,646	52,043	52,494	49,308	47,874	52,938	48,031	45,658	45,767	44,666	546,691
Occupants Using Safety Belts	44,445	44,285	43,842	45,136	42,585	41,295	46,808	42,412	40,785	41,677	41,036	474,306
% Using Safety Belts	81.9%	82.6%	84.2%	86.0%	86.4%	86.3%	88.4%	88.3%	89.3%	91.1%	91.9%	86.8%
Deaths	337	348	310	331	280	284	283	237	257	295	256	3,218
Using Safety Belts	85	101	94	121	87	116	119	76	103	100	112	1,114
% Using Safety Belts	25.2%	29.0%	30.3%	36.6%	31.1%	40.8%	42.0%	32.1%	40.1%	33.9%	43.8%	34.6%
Injuries	9,685	9,599	8,926	8,632	8,420	8,290	8,452	7,483	7,118	7,173	6,737	90,515
Using Safety Belts	6,357	6,356	6,158	6,123	6,134	5,937	6,351	5,609	5,379	5,691	5,422	65,517
% Using Safety Belts	65.6%	66.2%	69.0%	70.9%	72.9%	71.6%	75.1%	75.0%	75.6%	79.3%	80.5%	72.4%
Unharmd or Unknown	44,244	43,699	42,807	43,531	40,608	39,300	44,203	40,311	38,283	38,299	37,673	452,958
Using Safety Belts	38,003	37,828	37,590	38,892	36,364	35,242	40,338	36,727	35,303	35,886	35,502	407,675
% Using Safety Belts	85.9%	86.6%	87.8%	89.3%	89.5%	89.7%	91.3%	91.1%	92.2%	93.7%	94.2%	90.0%

**Percent of Occupants Safety Belt Use All Ages**



**Percent of Occupant Safety Belt Use Deaths: All Ages**



\*Excludes occupants in vehicle body types: motorcycle, moped, farm equipment, all-terrain vehicle, bus, train, other, and unknown

\*\*Excludes airbag only, helmet, eye protection, and unknown restraint use