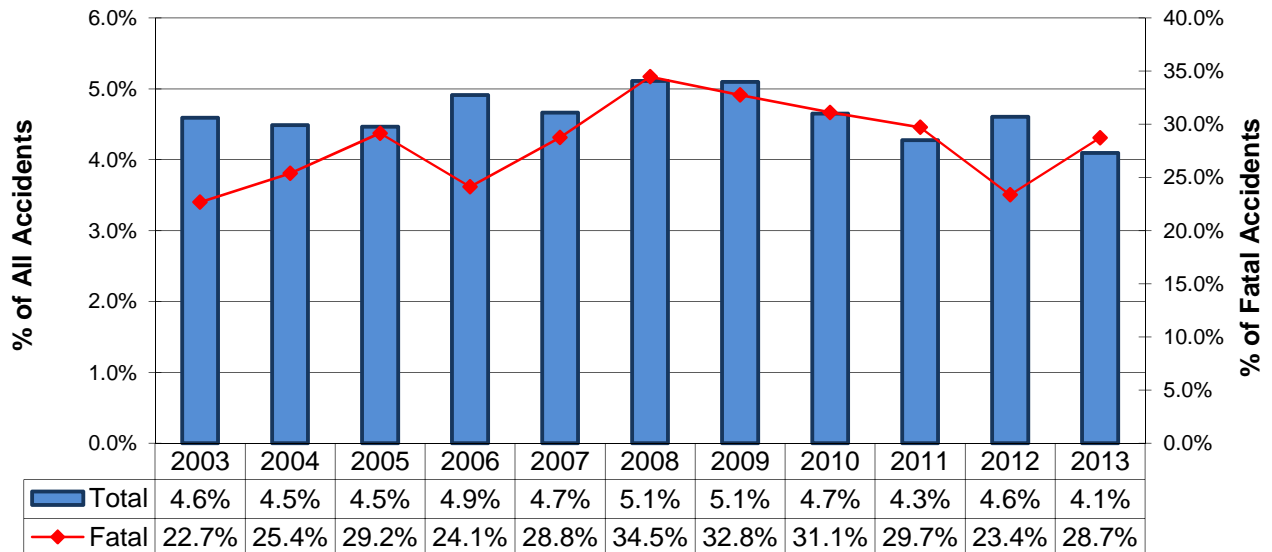


## Alcohol-Related Accidents

Type	Total	Alcohol-Related	% of All
<b>Accidents</b>			
All	58,472	2,394	4.1%
Fatal	327	94	28.7%
Injury	13,106	984	7.5%
PDO	45,039	1,316	2.9%
<b>People</b>			
All	132,281	4,261	3.2%
Deaths	350	96	27.4%
Injuries	18,077	1,319	7.3%
Unharmed	113,854	2,846	2.5%



### Alcohol-Related Accident History 2003-2013

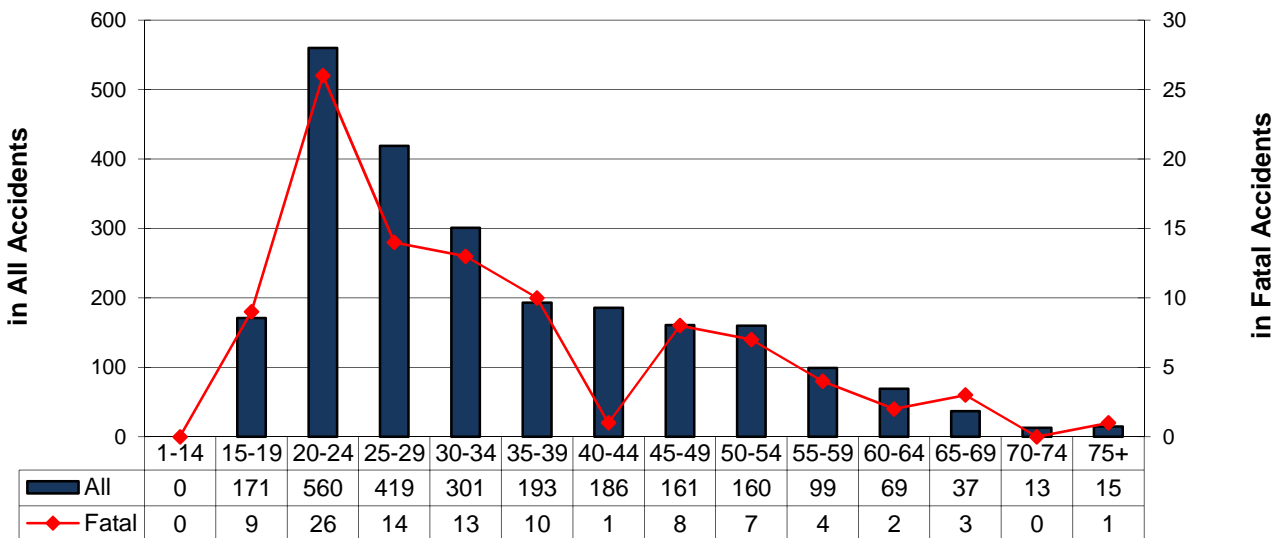


## Alcohol-Related Accidents By Driver Age

Alcohol-Impaired Driver Ages	Accidents				People	
	Total	Fatal	Injury	PDO	Deaths	Injured
Unknown	8	0	0	8	0	0
1-14	0	0	0	0	0	0
15-19	171	9	67	95	9	115
1-20	253	14	102	137	14	161
20-24	560	26	190	344	26	260
25-29	419	14	169	236	15	222
30-34	301	13	139	149	13	186
35-39	193	10	82	101	11	109
40-44	186	1	80	105	1	98
45-49	161	8	74	79	8	99
50-54	160	7	70	83	7	91
55-59	99	4	46	49	4	57
60-64	69	2	30	37	2	42
65-69	37	3	18	16	3	22
70-74	13	0	6	7	0	10
75+	15	1	6	8	1	8



**Alcohol-Impaired Drivers by Age Group**

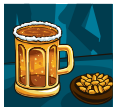


**Note:** More than one driver per age group can be involved in the same accident.

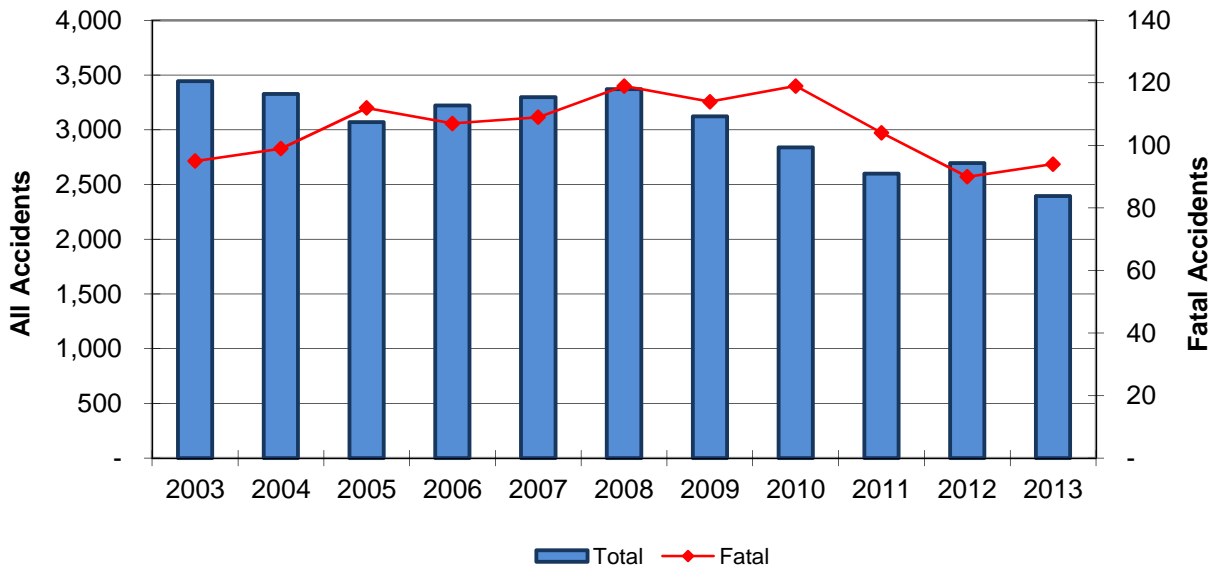
# Alcohol-Related Accidents

## 2003-2013 Summary

Year	Accidents				People	
	Total	Fatal	Injury	PDO	Deaths	Injuries
2003	3,445	95	1,519	1,831	105	2,285
2004	3,328	99	1,422	1,807	117	2,014
2005	3,069	112	1,361	1,596	119	1,959
2006	3,222	107	1,448	1,667	118	2,062
2007	3,297	109	1,380	1,808	119	1,949
2008	3,370	119	1,389	1,862	130	2,004
2009	3,123	114	1,339	1,670	125	1,920
2010	2,839	119	1,168	1,552	140	1,677
2011	2,599	104	1,104	1,391	114	1,563
2012	2,696	90	1,197	1,409	102	1,685
2013	2,394	94	984	1,316	96	1,318
<b>Total</b>	<b>33,382</b>	<b>1,162</b>	<b>14,311</b>	<b>17,909</b>	<b>1,285</b>	<b>20,436</b>



2003-2013 Alcohol-Related Accident Summary



## Alcohol-Related Accidents Involving Alcohol-Impaired Male Drivers

Year	Accidents				People	
	Total	Fatal	Injury	PDO	Deaths	Injuries
2003	2,814	84	1,279	1,451	94	1,970
2004	2,710	84	1,191	1,435	99	1,721
2005	2,542	98	1,164	1,280	105	1,716
2006	2,631	92	1,202	1,337	100	1,758
2007	2,674	102	1,139	1,433	112	1,644
2008	2,738	109	1,151	1,478	119	1,698
2009	2,558	105	1,115	1,338	116	1,623
2010	2,252	104	935	1,213	125	1,392
2011	2,083	88	911	1,084	98	1,288
2012	2,176	84	982	1,110	96	1,421
2013	1,913	87	829	997	89	1,132
<b>Total</b>	<b>27,091</b>	<b>1,037</b>	<b>11,898</b>	<b>14,156</b>	<b>1,153</b>	<b>17,363</b>

## Involving Alcohol-Impaired Female Drivers

Year	Accidents				People	
	Total	Fatal	Injury	PDO	Deaths	Injuries
2003	995	29	451	515	36	785
2004	982	31	440	511	41	729
2005	862	36	372	454	40	647
2006	900	30	435	435	38	718
2007	919	22	418	479	23	674
2008	934	34	424	476	43	703
2009	887	30	404	453	33	669
2010	892	33	372	487	41	600
2011	744	29	285	430	32	463
2012	797	21	358	418	27	584
2013	703	21	266	416	22	420
<b>Total</b>	<b>9,615</b>	<b>316</b>	<b>4,225</b>	<b>5,074</b>	<b>376</b>	<b>6,992</b>

**Note:** There are instances where a female and a male driver were involved in the same accident causing multiple counting in the data above. In addition, drivers whose gender was unknown are excluded.