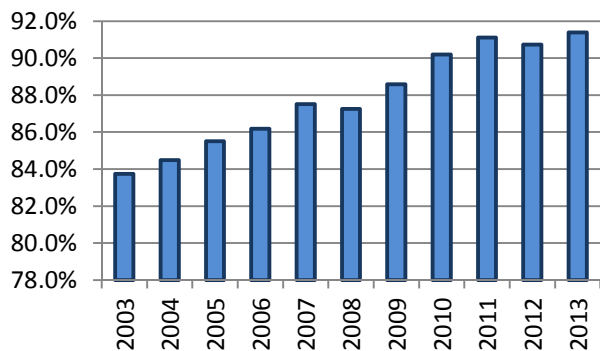


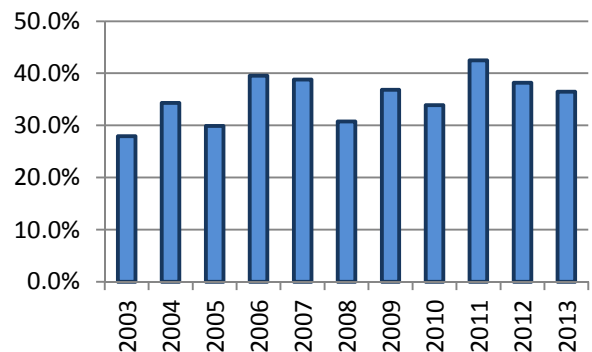
All Occupants* in Accidents - Safety Restraint Usage** History

Years												
	2003	2004	2005	2006	2007	2008	2009	2010	2011	2012	2013	Totals
Occupants in Accidents	172,652	170,246	156,197	148,654	157,426	145,114	133,623	131,826	128,968	125,297	125,523	1,595,526
Occupants Using Safety Belts	144,582	143,835	133,565	128,109	137,763	126,623	118,359	118,889	117,504	113,680	114,707	1,397,616
% Using Safety Belts	83.7%	84.5%	85.5%	86.2%	87.5%	87.3%	88.6%	90.2%	91.1%	90.7%	91.4%	87.6%
Deaths	401	399	351	364	343	309	304	363	313	317	277	3,741
Using Safety Belts	112	137	105	144	133	95	112	123	133	121	101	1,316
% Using Safety Belts	27.9%	34.3%	29.9%	39.6%	38.8%	30.7%	36.8%	33.9%	42.5%	38.2%	36.5%	35.2%
Injuries	23,088	21,940	20,879	20,435	20,882	19,098	17,819	17,213	16,625	16,976	16,237	211,192
Using Safety Belts	16,986	16,466	15,981	15,613	16,558	15,094	14,153	14,189	14,015	14,293	13,957	167,305
% Using Safety Belts	73.6%	75.1%	76.5%	76.4%	79.3%	79.0%	79.4%	82.4%	84.3%	84.2%	86.0%	79.2%
Unharmd or Unknown	149,163	147,907	134,967	127,855	136,201	125,707	115,500	114,250	112,030	108,004	109,009	1,380,593
Using Safety Belts	127,484	127,232	117,479	112,352	121,072	111,434	104,094	104,577	103,356	99,266	100,649	1,228,995
% Using Safety Belts	85.5%	86.0%	87.0%	87.9%	88.9%	88.6%	90.1%	91.5%	92.3%	91.9%	92.3%	89.0%

Percent of Occupants Safety Belt Use All Ages



Percent of Occupant Safety Belt Use Deaths: All Ages



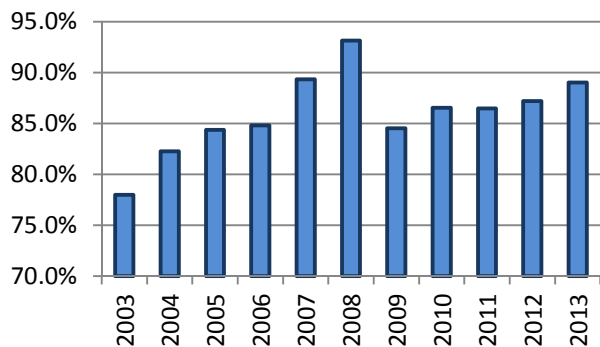
*Excludes occupants in vehicle body types: motorcycle, moped, farm equipment, all-terrain vehicle, bus, train, other, and unknown

**Excludes airbag only, helmet, eye protection, and unknown restraint use

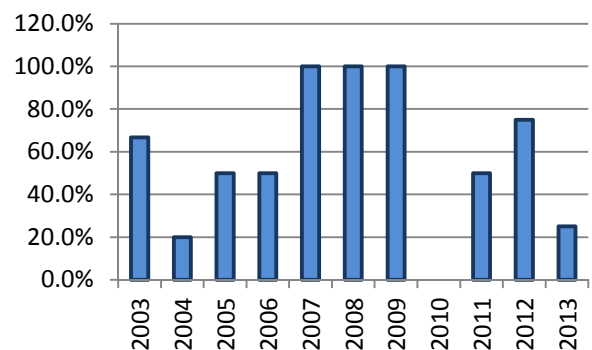
Occupants* 1-3 Years Old in Accidents - Safety Restraint Usage** History

Years												
	2003	2004	2005	2006	2007	2008	2009	2010	2011	2012	2013	Totals
Occupants in Accidents	4,990	4,987	4,548	4,162	4,615	3,991	3,847	3,490	3,535	3,699	3,627	45,491
Occupants Using Safety Belts	3,892	4,103	3,837	3,529	4,123	3,717	3,252	3,020	3,057	3,225	3,229	38,984
% Using Safety Belts	78.0%	82.3%	84.4%	84.8%	89.3%	93.1%	84.5%	86.5%	86.5%	87.2%	89.0%	85.7%
Deaths	6	10	2	2	6	1	4	3	4	4	4	46
Using Safety Belts	4	2	1	1	6	1	4	0	2	3	1	25
% Using Safety Belts	66.7%	20.0%	50.0%	50.0%	100.0%	100.0%	100.0%	0.0%	50.0%	75.0%	25.0%	54.3%
Injuries	420	340	333	295	314	275	288	212	272	290	251	3,290
Using Safety Belts	283	254	241	216	257	234	219	168	220	221	204	2,517
% Using Safety Belts	67.4%	74.7%	72.4%	73.2%	81.8%	85.1%	76.0%	79.2%	80.9%	76.2%	81.3%	76.5%
Unharmd or Unknown	4,564	4,637	4,213	3,865	4,295	3,715	3,555	3,275	3,259	3,405	3,372	42,155
Using Safety Belts	3,605	3,847	3,595	3,312	3,860	3,482	3,029	2,852	2,835	3,001	3,024	36,442
% Using Safety Belts	79.0%	83.0%	85.3%	85.7%	89.9%	93.7%	85.2%	87.1%	87.0%	88.1%	89.7%	86.4%

Percent of Occupants Safety Belt Use All Ages



Percent of Occupant Safety Belt Use Deaths: All Ages



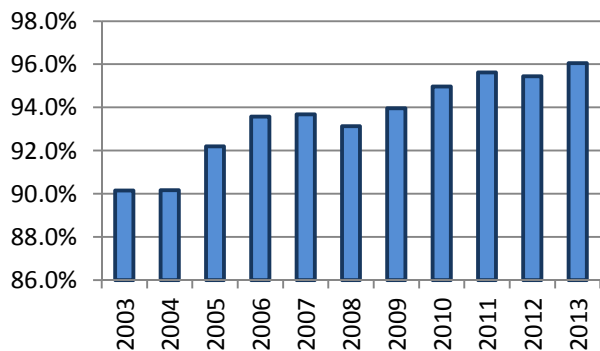
*Excludes occupants in vehicle body types: motorcycle, moped, farm equipment, all-terrain vehicle, bus, train, other, and unknown

**Restraint usage: infant, child, or booster seat, with or without airbag deployment.

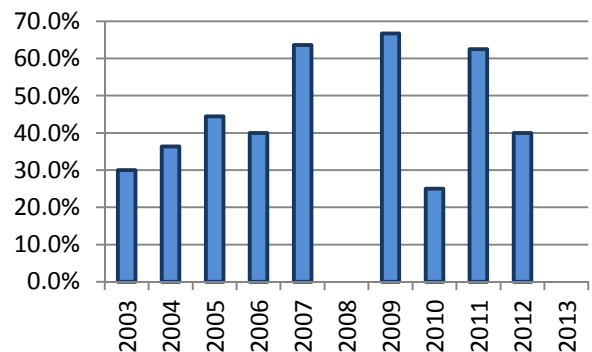
Occupants* 4-13 Years Old in Accidents - Safety Restraint Usage** History

Years												
	2003	2004	2005	2006	2007	2008	2009	2010	2011	2012	2013	Totals
Occupants in Accidents	11,732	11,377	10,122	9,505	10,163	9,384	8,372	7,025	7,647	7,681	7,839	100,847
Occupants Using Safety Belts	10,576	10,258	9,332	8,894	9,521	8,740	7,867	6,672	7,312	7,331	7,530	94,033
% Using Safety Belts	90.1%	90.2%	92.2%	93.6%	93.7%	93.1%	94.0%	95.0%	95.6%	95.4%	96.1%	93.2%
Deaths	10	11	18	5	11	5	3	4	8	10	5	90
Using Safety Belts	3	4	8	2	7	0	2	1	5	4	0	36
% Using Safety Belts	30.0%	36.4%	44.4%	40.0%	63.6%	0.0%	66.7%	25.0%	62.5%	40.0%	0.0%	40.0%
Injuries	1,270	1,161	1,124	1,082	1,029	1,009	921	714	787	906	853	10,856
Using Safety Belts	990	869	913	872	857	848	783	620	710	799	780	9,041
% Using Safety Belts	78.0%	74.8%	81.2%	80.6%	83.3%	84.0%	85.0%	86.8%	90.2%	88.2%	91.4%	83.3%
Unharmd or Unknown	10,452	10,205	8,980	8,418	9,123	8,370	7,448	6,307	6,852	6,765	6,981	89,901
Using Safety Belts	9,583	9,385	8,411	8,020	8,657	7,892	7,082	6,051	6,597	6,528	6,750	84,956
% Using Safety Belts	91.7%	92.0%	93.7%	95.3%	94.9%	94.3%	95.1%	95.9%	96.3%	96.5%	96.7%	94.5%

Percent of Occupants Safety Belt Use All Ages



Percent of Occupant Safety Belt Use Deaths: All Ages



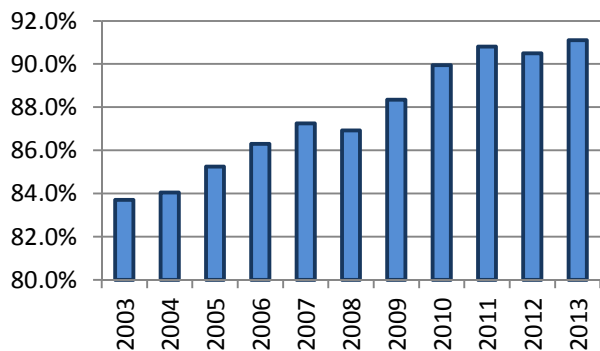
*Excludes occupants in vehicle body types: motorcycle, moped, farm equipment, all-terrain vehicle, bus, train, other, and unknown

**Excludes airbag only, helmet, eye protection, and unknown restraint use

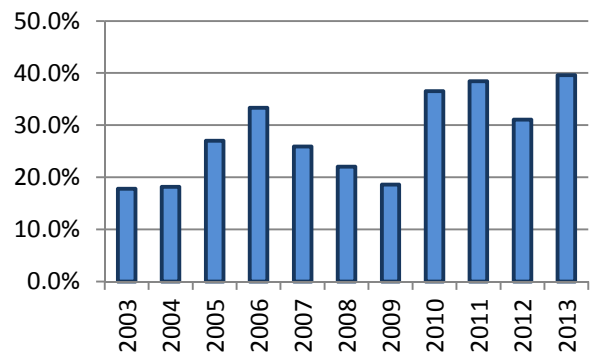
All Occupants* in Accidents - Safety Restraint Usage** History Where the Speed Limit is Less Than or Equal to 45 mph

Years												
	2003	2004	2005	2006	2007	2008	2009	2010	2011	2012	2013	Totals
Occupants in Accidents	114,246	112,097	103,000	97,538	101,197	94,795	85,185	81,785	80,793	81,306	80,360	1,032,302
Occupants Using Safety Belts	95,633	94,220	87,812	84,176	88,292	82,399	75,260	73,569	73,369	73,585	73,210	901,525
% Using Safety Belts	83.7%	84.1%	85.3%	86.3%	87.2%	86.9%	88.3%	90.0%	90.8%	90.5%	91.1%	87.3%
Deaths	73	55	63	75	54	68	43	63	52	58	48	652
Using Safety Belts	13	10	17	25	14	15	8	23	20	18	19	182
% Using Safety Belts	17.8%	18.2%	27.0%	33.3%	25.9%	22.1%	18.6%	36.5%	38.5%	31.0%	39.6%	27.9%
Injuries	13,313	12,557	11,965	11,692	12,046	11,356	10,378	9,589	9,458	9,946	9,307	121,607
Using Safety Belts	10,193	9,810	9,484	9,350	9,934	9,315	8,537	8,159	8,225	8,675	8,239	99,921
% Using Safety Belts	76.6%	78.1%	79.3%	80.0%	82.5%	82.0%	82.3%	85.1%	87.0%	87.2%	88.5%	82.2%
Unharmd or Unknown	100,860	99,485	90,972	85,771	89,097	83,371	74,764	72,133	71,283	71,302	71,005	910,043
Using Safety Belts	85,427	84,400	78,311	74,801	78,344	73,069	66,715	65,387	65,124	64,892	64,952	801,422
% Using Safety Belts	84.7%	84.8%	86.1%	87.2%	87.9%	87.6%	89.2%	90.6%	91.4%	91.0%	91.5%	88.1%

Percent of Occupants Safety Belt Use All Ages



Percent of Occupant Safety Belt Use Deaths: All Ages



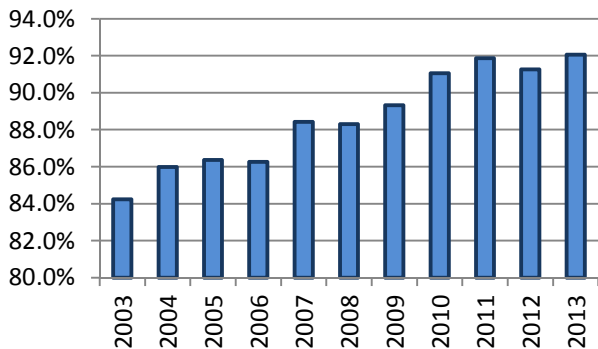
*Excludes occupants in vehicle body types: motorcycle, moped, farm equipment, all-terrain vehicle, bus, train, other, and unknown

**Excludes airbag only, helmet, eye protection, and unknown restraint use

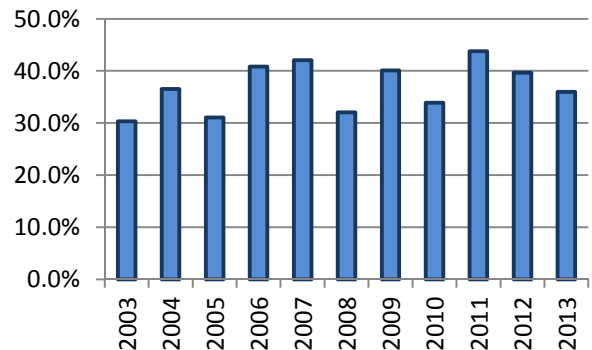
All Occupants* in Accidents - Safety Restraint Usage** History Where the Speed Limit is Greater Than 45 mph

Years												
	2003	2004	2005	2006	2007	2008	2009	2010	2011	2012	2013	Totals
Occupants in Accidents	52,041	52,494	49,308	47,874	52,937	48,030	45,654	45,755	44,709	42,443	44,235	525,480
Occupants Using Safety Belts	43,840	45,136	42,585	41,295	46,807	42,408	40,781	41,664	41,074	38,733	40,718	465,041
% Using Safety Belts	84.2%	86.0%	86.4%	86.3%	88.4%	88.3%	89.3%	91.1%	91.9%	91.3%	92.0%	88.5%
Deaths	310	331	280	284	283	237	257	295	256	257	228	3,018
Using Safety Belts	94	121	87	116	119	76	103	100	112	102	82	1,112
% Using Safety Belts	30.3%	36.6%	31.1%	40.8%	42.0%	32.1%	40.1%	33.9%	43.8%	39.7%	36.0%	36.8%
Injuries	8,926	8,632	8,420	8,290	8,452	7,483	7,118	7,167	6,745	6,866	6,834	84,933
Using Safety Belts	6,158	6,123	6,134	5,937	6,351	5,609	5,379	5,685	5,429	5,479	5,641	63,925
% Using Safety Belts	69.0%	70.9%	72.9%	71.6%	75.1%	75.0%	75.6%	79.3%	80.5%	79.8%	82.5%	75.3%
Unharmd or Unknown	42,805	43,531	40,608	39,300	44,202	40,310	38,279	38,293	37,708	35,320	37,173	437,529
Using Safety Belts	37,588	38,892	36,364	35,242	40,337	36,723	35,299	35,879	35,533	33,152	34,995	400,004
% Using Safety Belts	87.8%	89.3%	89.5%	89.7%	91.3%	91.1%	92.2%	93.7%	94.2%	93.9%	94.1%	91.4%

Percent of Occupants Safety Belt Use All Ages



Percent of Occupant Safety Belt Use Deaths: All Ages



*Excludes occupants in vehicle body types: motorcycle, moped, farm equipment, all-terrain vehicle, bus, train, other, and unknown

**Excludes airbag only, helmet, eye protection, and unknown restraint use