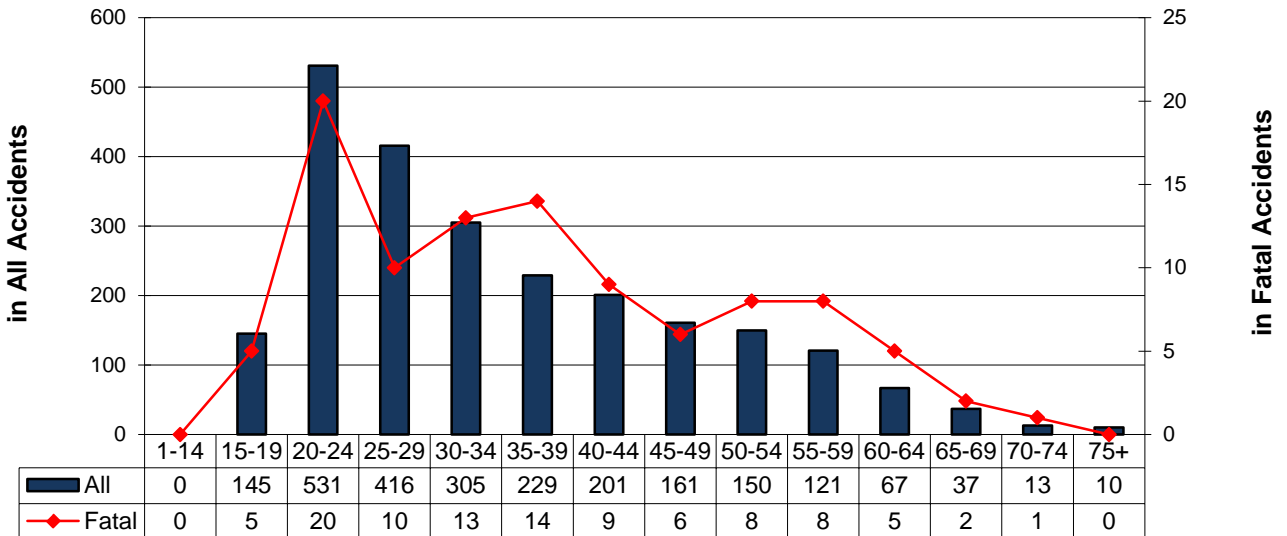


## Alcohol-Related Accidents By Driver Age

Alcohol-Impaired Driver Ages	Accidents				People	
	Total	Fatal	Injury	PDO	Deaths	Injured
Unknown	12	0	4	8	0	4
1-14	0	0	0	0	0	0
15-19	145	5	65	75	5	101
1-20	245	7	102	136	7	164
20-24	531	20	203	308	23	303
25-29	416	10	192	214	10	257
30-34	305	13	116	176	16	174
35-39	229	14	99	116	20	146
40-44	201	9	85	107	10	130
45-49	161	6	61	94	7	87
50-54	150	8	65	77	8	84
55-59	121	8	44	69	8	55
60-64	67	5	26	36	5	36
65-69	37	2	15	20	2	20
70-74	13	1	7	5	1	8
75+	10	0	2	8	0	4



**Alcohol-Impaired Drivers by Age Group**



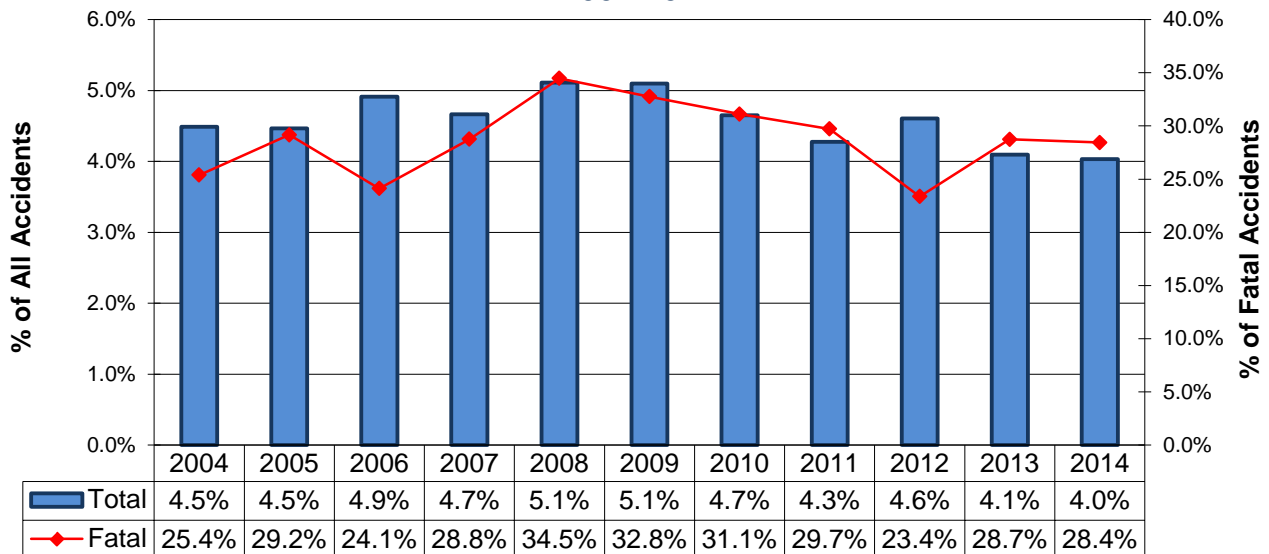
**Note:** More than one driver per age group can be involved in the same accident.

## Alcohol-Related Accidents

Type	Total	Alcohol-Related	% of All
<b>Accidents</b>			
All	59,533	2,400	4.0%
Fatal	341	97	28.4%
Injury	13,030	990	7.6%
PDO	46,162	1,313	2.8%
<b>People</b>			
All	134,255	4,304	3.2%
Deaths	385	109	28.3%
Injuries	17,925	1,411	7.9%
Unharmed	115,945	2,784	2.4%



### Alcohol-Related Accident History 2004-2014



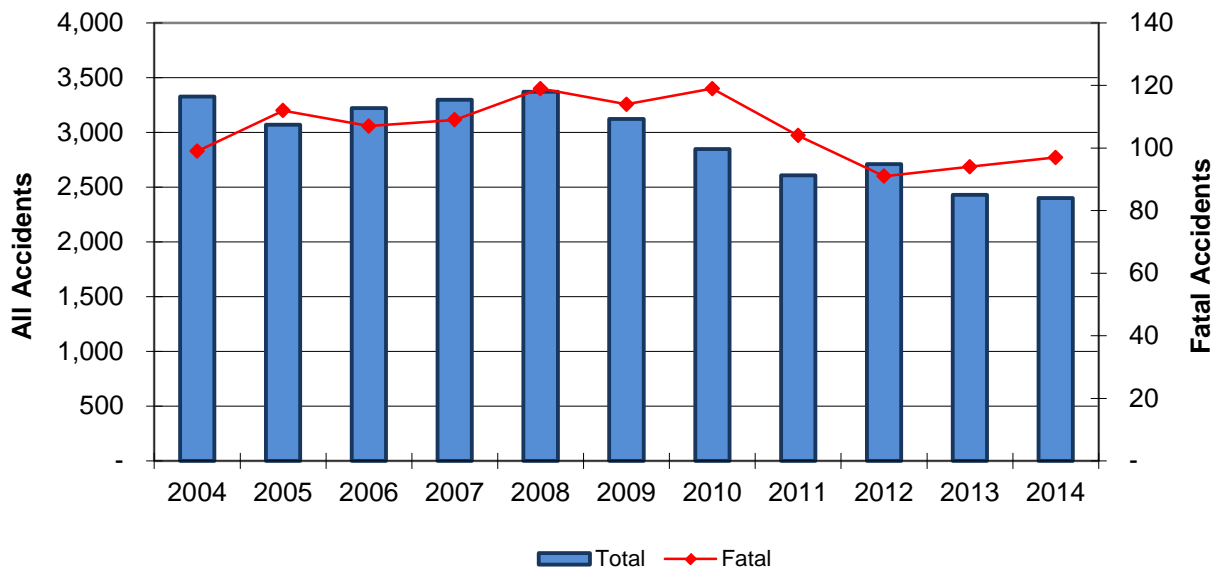
# Alcohol-Related Accidents

## 2004-2014 Summary

Year	Accidents				People	
	Total	Fatal	Injury	PDO	Deaths	Injuries
2004	3,328	99	1,422	1,807	117	2,014
2005	3,069	112	1,361	1,596	119	1,959
2006	3,221	107	1,447	1,667	118	2,061
2007	3,297	109	1,380	1,808	119	1,949
2008	3,370	119	1,389	1,862	130	2,004
2009	3,124	114	1,339	1,671	125	1,920
2010	2,849	119	1,171	1,559	140	1,680
2011	2,609	104	1,107	1,398	114	1,568
2012	2,711	91	1,207	1,413	103	1,696
2013	2,430	94	1,004	1,332	96	1,349
2014	2,400	97	990	1,313	109	1,411
<b>Total</b>	<b>32,408</b>	<b>1,165</b>	<b>13,817</b>	<b>17,426</b>	<b>1,290</b>	<b>19,611</b>



2004-2014 Alcohol-Related Accident Summary



## Alcohol-Related Accidents

### Involving Alcohol-Impaired Male Drivers

Year	Accidents				People	
	Total	Fatal	Injury	PDO	Deaths	Injuries
2004	2,710	84	1,191	1,435	99	1,721
2005	2,542	98	1,164	1,280	105	1,716
2006	2,630	92	1,201	1,337	100	1,757
2007	2,674	102	1,139	1,433	112	1,644
2008	2,738	109	1,151	1,478	119	1,698
2009	2,558	105	1,115	1,338	116	1,623
2010	2,257	104	938	1,215	125	1,395
2011	2,086	88	912	1,086	98	1,289
2012	2,185	85	989	1,111	97	1,428
2013	1,936	87	843	1,006	89	1,156
2014	1,881	88	786	1,007	99	1,149
<b>Total</b>	<b>26,197</b>	<b>1,042</b>	<b>11,429</b>	<b>13,726</b>	<b>1,159</b>	<b>16,576</b>

### Involving Alcohol-Impaired Female Drivers

Year	Accidents				People	
	Total	Fatal	Injury	PDO	Deaths	Injuries
2004	982	31	440	511	41	729
2005	862	36	372	454	40	647
2006	900	30	435	435	38	718
2007	919	22	418	479	23	674
2008	934	34	424	476	43	703
2009	887	30	404	453	33	669
2010	892	33	372	487	41	600
2011	744	29	285	430	32	463
2012	801	21	359	421	27	586
2013	711	21	269	421	22	424
2014	757	21	318	418	26	509
<b>Total</b>	<b>9,389</b>	<b>308</b>	<b>4,096</b>	<b>4,985</b>	<b>366</b>	<b>6,722</b>

**Note:** There are instances where a female and a male driver were involved in the same accident causing multiple counting in the data above. In addition, drivers whose gender was unknown are excluded.