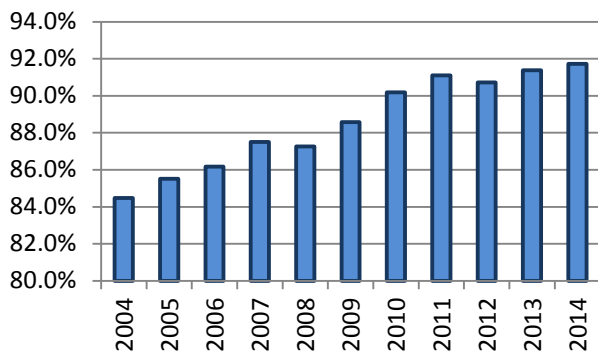


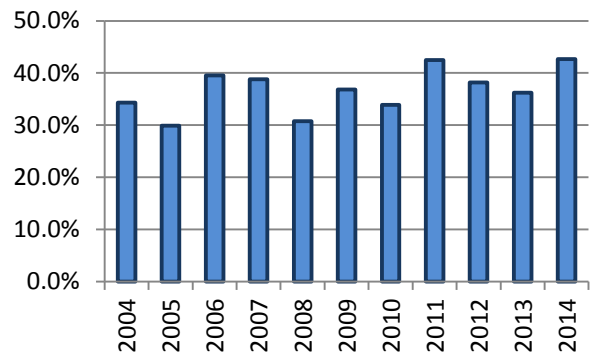
## All Occupants\* in Accidents - Safety Restraint Usage\*\* History

Years												
	2004	2005	2006	2007	2008	2009	2010	2011	2012	2013	2014	Totals
Occupants in Accidents	170,246	156,197	148,653	157,425	145,114	133,623	131,826	129,039	125,361	126,535	127,789	1,551,808
Occupants Using Safety Belts	143,835	133,565	128,109	137,762	126,623	118,359	118,889	117,558	113,736	115,627	117,222	1,371,285
% Using Safety Belts	84.5%	85.5%	86.2%	87.5%	87.3%	88.6%	90.2%	91.1%	90.7%	91.4%	91.7%	88.4%
Deaths	399	351	364	343	309	304	363	313	317	276	300	3,639
Using Safety Belts	137	105	144	133	95	112	123	133	121	100	128	1,331
% Using Safety Belts	34.3%	29.9%	39.6%	38.8%	30.7%	36.8%	33.9%	42.5%	38.2%	36.2%	42.7%	36.6%
Injuries	21,940	20,879	20,434	20,882	19,098	17,819	17,213	16,639	16,988	16,347	16,042	204,281
Using Safety Belts	16,466	15,981	15,613	16,558	15,094	14,153	14,189	14,025	14,305	14,051	13,900	164,335
% Using Safety Belts	75.1%	76.5%	76.4%	79.3%	79.0%	79.4%	82.4%	84.3%	84.2%	86.0%	86.6%	80.4%
Unharmful or Unknown	147,907	134,967	127,855	136,200	125,707	115,500	114,250	112,087	108,056	109,912	111,447	1,343,888
Using Safety Belts	127,232	117,479	112,352	121,071	111,434	104,094	104,577	103,400	99,310	101,476	103,194	1,205,619
% Using Safety Belts	86.0%	87.0%	87.9%	88.9%	88.6%	90.1%	91.5%	92.2%	91.9%	92.3%	92.6%	89.7%

**Percent of Occupants Safety Belt Use All Ages**



**Percent of Occupant Safety Belt Use Deaths: All Ages**



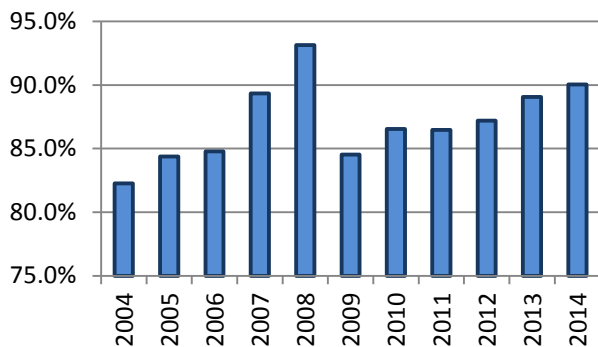
\*Excludes occupants in vehicle body types: motorcycle, moped, farm equipment, all-terrain vehicle, bus, train, other, and unknown

\*\*Excludes airbag only, helmet, eye protection, and unknown restraint use

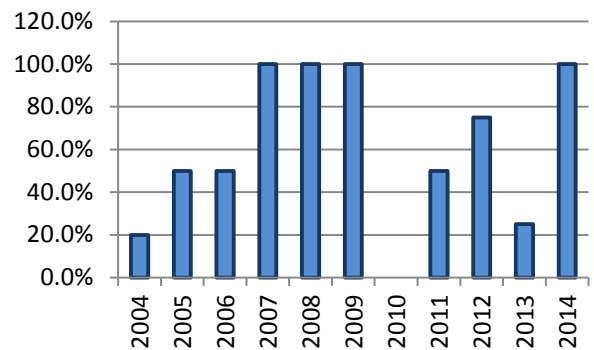
## Occupants\* 1-3 Years Old in Accidents - Safety Restraint Usage\*\* History

Years												
	2004	2005	2006	2007	2008	2009	2010	2011	2012	2013	2014	Totals
Occupants in Accidents	4,987	4,548	4,162	4,615	3,991	3,847	3,490	3,537	3,702	3,653	3,582	44,114
Occupants Using Safety Belts	4,103	3,837	3,529	4,123	3,717	3,252	3,020	3,058	3,228	3,253	3,225	38,345
% Using Safety Belts	82.3%	84.4%	84.8%	89.3%	93.1%	84.5%	86.5%	86.5%	87.2%	89.1%	90.0%	86.9%
Deaths	10	2	2	6	1	4	3	4	4	4	1	41
Using Safety Belts	2	1	1	6	1	4	0	2	3	1	1	22
% Using Safety Belts	20.0%	50.0%	50.0%	100.0%	100.0%	100.0%	0.0%	50.0%	75.0%	25.0%	100.0%	53.7%
Injuries	340	333	295	314	275	288	212	273	290	255	232	3,107
Using Safety Belts	254	241	216	257	234	219	168	221	221	207	200	2,438
% Using Safety Belts	74.7%	72.4%	73.2%	81.8%	85.1%	76.0%	79.2%	81.0%	76.2%	81.2%	86.2%	78.5%
Unharmed or Unknown	4,637	4,213	3,865	4,295	3,715	3,555	3,275	3,260	3,408	3,394	3,349	40,966
Using Safety Belts	3,847	3,595	3,312	3,860	3,482	3,029	2,852	2,835	3,004	3,045	3,024	35,885
% Using Safety Belts	83.0%	85.3%	85.7%	89.9%	93.7%	85.2%	87.1%	87.0%	88.1%	89.7%	90.3%	87.6%

**Percent of Occupants Safety Belt Use All Ages**



**Percent of Occupant Safety Belt Use Deaths: All Ages**



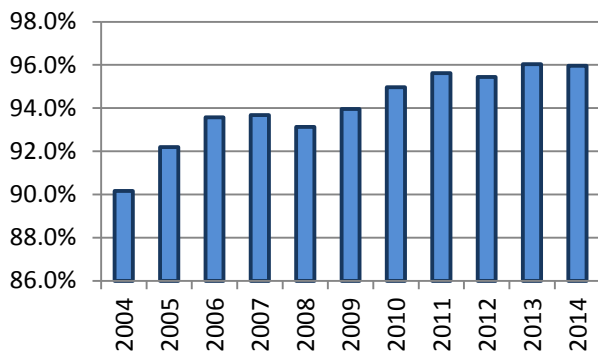
\*Excludes occupants in vehicle body types: motorcycle, moped, farm equipment, all-terrain vehicle, bus, train, other, and unknown

\*\*Restraint usage: infant, child, or booster seat, with or without airbag deployment.

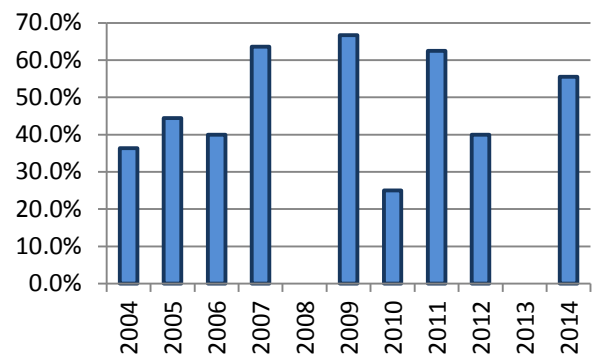
## Occupants\* 4-13 Years Old in Accidents - Safety Restraint Usage\*\* History

Years												
	2004	2005	2006	2007	2008	2009	2010	2011	2012	2013	2014	Totals
Occupants in Accidents	11,377	10,122	9,505	10,163	9,384	8,372	7,025	7,648	7,684	7,923	8,166	97,369
Occupants Using Safety Belts	10,258	9,332	8,894	9,521	8,740	7,867	6,672	7,313	7,334	7,609	7,836	91,376
% Using Safety Belts	90.2%	92.2%	93.6%	93.7%	93.1%	94.0%	95.0%	95.6%	95.4%	96.0%	96.0%	93.8%
Deaths	11	18	5	11	5	3	4	8	10	5	9	89
Using Safety Belts	4	8	2	7	0	2	1	5	4	0	5	38
% Using Safety Belts	36.4%	44.4%	40.0%	63.6%	0.0%	66.7%	25.0%	62.5%	40.0%	0.0%	55.6%	42.7%
Injuries	1,161	1,124	1,082	1,029	1,009	921	714	787	906	863	778	10,374
Using Safety Belts	869	913	872	857	848	783	620	710	799	786	707	8,764
% Using Safety Belts	74.8%	81.2%	80.6%	83.3%	84.0%	85.0%	86.8%	90.2%	88.2%	91.1%	90.9%	84.5%
Unharmful or Unknown	10,205	8,980	8,418	9,123	8,370	7,448	6,307	6,853	6,768	7,055	7,379	86,906
Using Safety Belts	9,385	8,411	8,020	8,657	7,892	7,082	6,051	6,598	6,531	6,823	7,124	82,574
% Using Safety Belts	92.0%	93.7%	95.3%	94.9%	94.3%	95.1%	95.9%	96.3%	96.5%	96.7%	96.5%	95.0%

**Percent of Occupants Safety Belt Use All Ages**



**Percent of Occupant Safety Belt Use Deaths: All Ages**



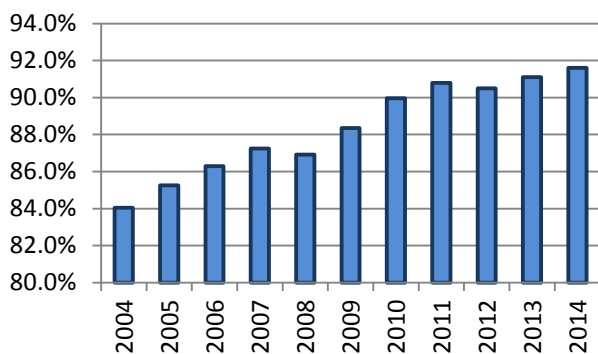
\*Excludes occupants in vehicle body types: motorcycle, moped, farm equipment, all-terrain vehicle, bus, train, other, and unknown

\*\*Excludes airbag only, helmet, eye protection, and unknown restraint use

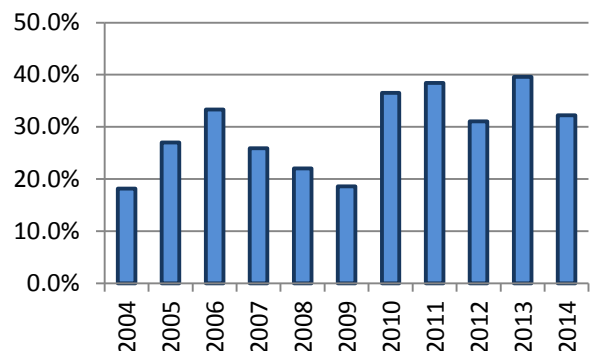
## All Occupants\* in Accidents - Safety Restraint Usage\*\* History Where the Speed Limit is Less Than or Equal to 45 mph

Years												
	2004	2005	2006	2007	2008	2009	2010	2011	2012	2013	2014	Totals
Occupants in Accidents	112,097	103,000	97,538	101,197	94,795	85,185	81,785	80,836	81,354	81,174	81,305	1,000,266
Occupants Using Safety Belts	94,220	87,812	84,176	88,292	82,399	75,260	73,569	73,399	73,628	73,954	74,474	881,183
% Using Safety Belts	84.1%	85.3%	86.3%	87.2%	86.9%	88.3%	90.0%	90.8%	90.5%	91.1%	91.6%	88.1%
Deaths	55	63	75	54	68	43	63	52	58	48	62	641
Using Safety Belts	10	17	25	14	15	8	23	20	18	19	20	189
% Using Safety Belts	18.2%	27.0%	33.3%	25.9%	22.1%	18.6%	36.5%	38.5%	31.0%	39.6%	32.3%	29.5%
Injuries	12,557	11,965	11,692	12,046	11,356	10,378	9,589	9,464	9,957	9,393	9,234	117,631
Using Safety Belts	9,810	9,484	9,350	9,934	9,315	8,537	8,159	8,229	8,686	8,309	8,250	98,063
% Using Safety Belts	78.1%	79.3%	80.0%	82.5%	82.0%	82.3%	85.1%	87.0%	87.2%	88.5%	89.3%	83.4%
Unharmed or Unknown	99,485	90,972	85,771	89,097	83,371	74,764	72,133	71,320	71,339	71,733	72,009	881,994
Using Safety Belts	84,400	78,311	74,801	78,344	73,069	66,715	65,387	65,150	64,924	65,626	66,204	782,931
% Using Safety Belts	84.8%	86.1%	87.2%	87.9%	87.6%	89.2%	90.6%	91.3%	91.0%	91.5%	91.9%	88.8%

**Percent of Occupants Safety Belt Use All Ages**



**Percent of Occupant Safety Belt Use Deaths: All Ages**



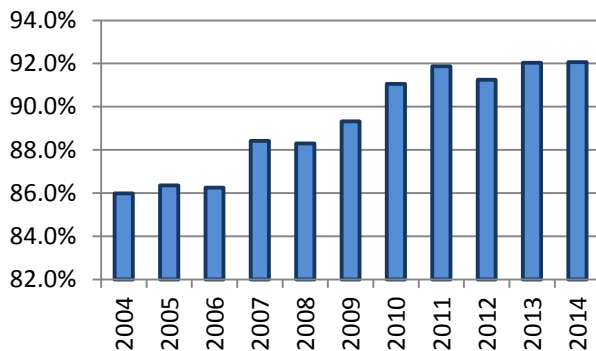
\*Excludes occupants in vehicle body types: motorcycle, moped, farm equipment, all-terrain vehicle, bus, train, other, and unknown

\*\*Excludes airbag only, helmet, eye protection, and unknown restraint use

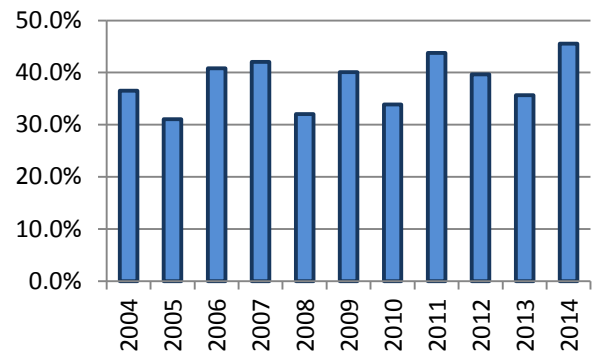
## All Occupants\* in Accidents - Safety Restraint Usage\*\* History Where the Speed Limit is Greater Than 45 mph

Years												
	2004	2005	2006	2007	2008	2009	2010	2011	2012	2013	2014	Totals
<b>Occupants in Accidents</b>	52,494	49,308	47,873	52,936	48,030	45,654	45,755	44,736	42,455	44,410	45,091	518,742
<b>Occupants Using Safety Belts</b>	45,136	42,585	41,295	46,806	42,408	40,781	41,664	41,098	38,742	40,876	41,516	462,907
<b>% Using Safety Belts</b>	86.0%	86.4%	86.3%	88.4%	88.3%	89.3%	91.1%	91.9%	91.3%	92.0%	92.1%	89.2%
<b>Deaths</b>	331	280	284	283	237	257	295	256	257	227	237	2,944
<b>Using Safety Belts</b>	121	87	116	119	76	103	100	112	102	81	108	1,125
<b>% Using Safety Belts</b>	36.6%	31.1%	40.8%	42.0%	32.1%	40.1%	33.9%	43.8%	39.7%	35.7%	45.6%	38.2%
<b>Injuries</b>	8,632	8,420	8,289	8,452	7,483	7,118	7,167	6,753	6,867	6,855	6,700	82,736
<b>Using Safety Belts</b>	6,123	6,134	5,937	6,351	5,609	5,379	5,685	5,435	5,480	5,662	5,561	63,356
<b>% Using Safety Belts</b>	70.9%	72.9%	71.6%	75.1%	75.0%	75.6%	79.3%	80.5%	79.8%	82.6%	83.0%	76.6%
<b>Unharmed or Unknown</b>	43,531	40,608	39,300	44,201	40,310	38,279	38,293	37,727	35,331	37,328	38,154	433,062
<b>Using Safety Belts</b>	38,892	36,364	35,242	40,336	36,723	35,299	35,879	35,551	33,160	35,133	35,847	398,426
<b>% Using Safety Belts</b>	89.3%	89.5%	89.7%	91.3%	91.1%	92.2%	93.7%	94.2%	93.9%	94.1%	94.0%	92.0%

**Percent of Occupants Safety Belt Use All Ages**



**Percent of Occupant Safety Belt Use Deaths: All Ages**



\*Excludes occupants in vehicle body types: motorcycle, moped, farm equipment, all-terrain vehicle, bus, train, other, and unknown

\*\*Excludes airbag only, helmet, eye protection, and unknown restraint use