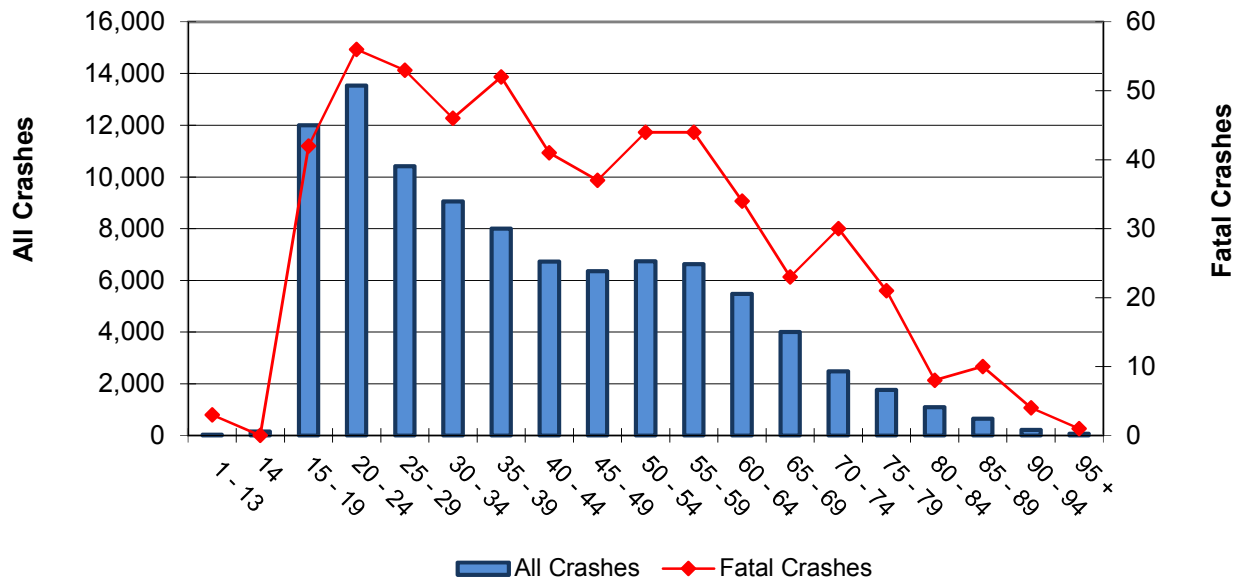


Driver Age Summary By Age Group

Driver Age	DRIVERS Involved In...			Crashes Per Age Group		
	All Crashes	Fatal Crashes	Injury Crashes	Total	Fatal	Injury
1 - 13	27	3	15	27	3	15
14	153	0	42	152	0	42
15 - 19	11,997	42	2,782	11,041	41	2,599
20 - 24	13,540	56	3,257	12,620	56	3,029
25 - 29	10,417	53	2,499	9,882	49	2,362
30 - 34	9,048	46	2,148	8,690	46	2,044
35 - 39	8,002	52	1,916	7,727	50	1,836
40 - 44	6,728	41	1,609	6,520	41	1,552
45 - 49	6,360	37	1,526	6,170	37	1,479
50 - 54	6,740	44	1,639	6,549	43	1,567
55 - 59	6,622	44	1,570	6,412	41	1,494
60 - 64	5,474	34	1,223	5,348	34	1,195
65 - 69	3,999	23	943	3,915	22	910
70 - 74	2,474	30	567	2,434	30	553
75 - 79	1,761	21	416	1,743	21	407
80 - 84	1,095	8	256	1,093	8	255
85 - 89	649	10	163	643	10	162
90 - 94	218	4	43	217	4	43
95 +	60	1	22	48	1	18
Unknown	4,430	5	517	4,379	5	509
Total	99,794	554	23,153	61,844*	381*	13,365*

**Drivers Involved in Crashes
By Age Group**

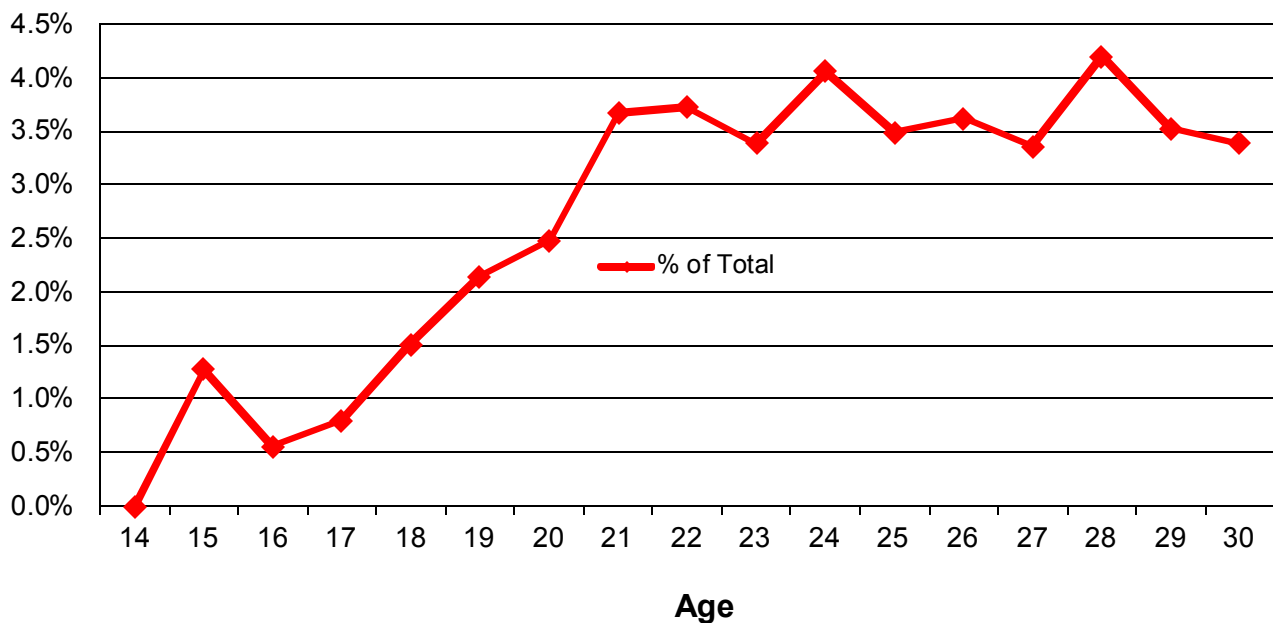


* The totals reflect all crashes in Kansas for 2016, not the sum of the cells above, as multiple counting occurs when drivers of different age groups are involved in the same crash.

Driver Age Summary Ages 14-30

Driver Age	All Crashes Per Driver Age					People		Alcohol-Related		
	Total	% of All*	Fatal	Injury	PDO	Deaths	Injuries	Impaired Drivers	Crashes	% of Total
14	152	0.25%	0	42	110	0	64	0	0	0.0%
15	704	1.14%	4	178	522	4	275	9	9	1.3%
16	1,976	3.20%	7	442	1,527	8	666	11	11	0.6%
17	2,888	4.67%	9	661	2,218	16	974	23	23	0.8%
18	3,114	5.04%	12	740	2,362	12	1,035	47	47	1.5%
19	2,987	4.83%	9	697	2,280	10	984	64	64	2.1%
20	2,907	4.70%	12	707	2,188	12	990	72	72	2.5%
21	2,864	4.63%	17	690	2,157	19	986	105	105	3.7%
22	2,631	4.25%	9	633	1,989	14	892	98	98	3.7%
23	2,479	4.01%	6	571	1,902	7	786	84	84	3.4%
24	2,467	3.99%	12	606	1,849	13	873	101	100	4.1%
25	2,265	3.66%	11	554	1,700	12	781	79	79	3.5%
26	2,183	3.53%	11	511	1,661	14	732	79	79	3.6%
27	2,056	3.32%	12	475	1,568	20	714	69	69	3.4%
28	1,977	3.20%	7	495	1,475	8	744	83	83	4.2%
29	1,818	2.94%	10	436	1,372	12	614	64	64	3.5%
30	1,861	3.01%	8	455	1,398	8	706	63	63	3.4%

Percentage of Alcohol-Related Crashes to All Crashes by Driver Age



* % of All - Divides all crashes per age by all crashes for Kansas in 2016.