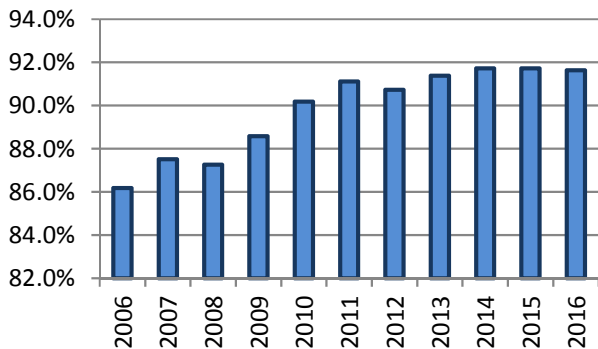


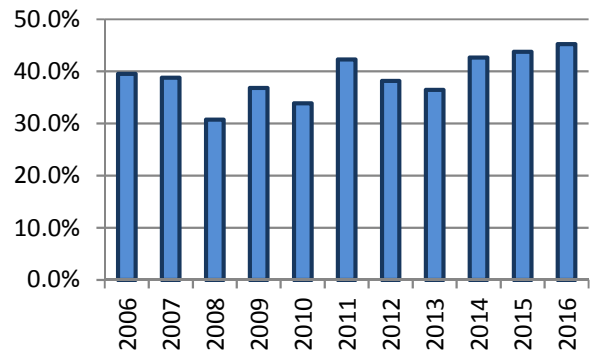
## All Occupants\* in Crashes - Safety Restraint Usage\*\* History

Years												
	2006	2007	2008	2009	2010	2011	2012	2013	2014	2015	2016	Totals
Occupants in Crashes	148,653	157,425	145,114	133,518	131,818	129,419	125,727	127,562	128,849	132,521	133,954	1,494,560
Occupants Using Safety Belts	128,109	137,762	126,623	118,265	118,884	117,921	114,075	116,581	118,194	121,561	122,758	1,340,733
% Using Safety Belts	86.2%	87.5%	87.3%	88.6%	90.2%	91.1%	90.7%	91.4%	91.7%	91.7%	91.6%	89.7%
Deaths	364	343	309	304	363	312	317	277	300	272	325	3,486
Using Safety Belts	144	133	95	112	123	132	121	101	128	119	147	1,355
% Using Safety Belts	39.6%	38.8%	30.7%	36.8%	33.9%	42.3%	38.2%	36.5%	42.7%	43.8%	45.2%	38.9%
Injuries	20,434	20,882	19,098	17,811	17,213	16,676	17,023	16,405	16,131	16,519	16,510	194,702
Using Safety Belts	15,613	16,558	15,094	14,147	14,189	14,059	14,333	14,107	13,979	14,391	14,360	160,830
% Using Safety Belts	76.4%	79.3%	79.0%	79.4%	82.4%	84.3%	84.2%	86.0%	86.7%	87.1%	87.0%	82.6%
Unharmd or Unknown	127,855	136,200	125,707	115,403	114,242	112,430	108,387	110,880	112,418	115,730	117,112	1,296,364
Using Safety Belts	112,352	121,071	111,434	104,006	104,572	103,729	99,621	102,373	104,087	107,051	108,249	1,178,545
% Using Safety Belts	87.9%	88.9%	88.6%	90.1%	91.5%	92.3%	91.9%	92.3%	92.6%	92.5%	92.4%	90.9%

**Percent of Occupants Safety Belt Use All Ages**



**Percent of Occupant Safety Belt Use Deaths: All Ages**



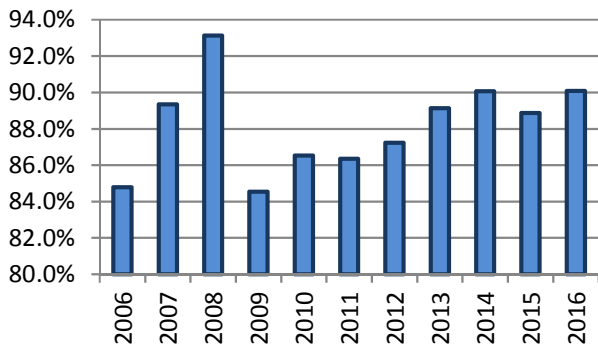
\*Excludes occupants in vehicle body types: motorcycle, moped, farm equipment, all-terrain vehicle, bus, train, other, and unknown

\*\*Excludes airbag only, helmet, eye protection, and unknown restraint use

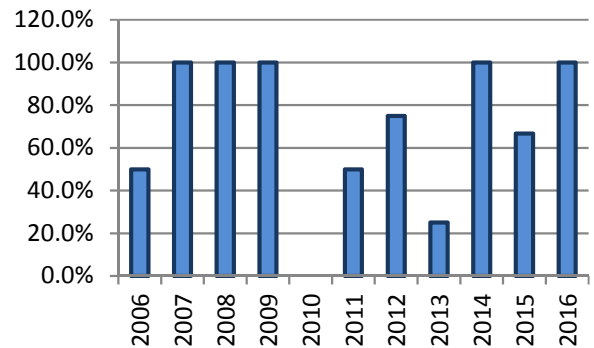
## Occupants\* 1-3 Years Old in Crashes - Safety Restraint Usage\*\* History

Years												
	2006	2007	2008	2009	2010	2011	2012	2013	2014	2015	2016	Totals
Occupants in Crashes	4,162	4,615	3,991	3,847	3,490	3,545	3,712	3,690	3,618	3,768	3,715	42,153
Occupants Using Safety Belts	3,529	4,123	3,717	3,252	3,020	3,061	3,238	3,289	3,259	3,349	3,347	37,184
% Using Safety Belts	84.8%	89.3%	93.1%	84.5%	86.5%	86.3%	87.2%	89.1%	90.1%	88.9%	90.1%	88.2%
Deaths	2	6	1	4	3	4	4	4	1	3	1	33
Using Safety Belts	1	6	1	4	0	2	3	1	1	2	1	22
% Using Safety Belts	50.0%	100.0%	100.0%	100.0%	0.0%	50.0%	75.0%	25.0%	100.0%	66.7%	100.0%	66.7%
Injuries	295	314	275	288	212	273	290	255	232	251	263	2,948
Using Safety Belts	216	257	234	219	168	221	221	208	200	208	225	2,377
% Using Safety Belts	73.2%	81.8%	85.1%	76.0%	79.2%	81.0%	76.2%	81.6%	86.2%	82.9%	85.6%	80.6%
Unharmd or Unknown	3,865	4,295	3,715	3,555	3,275	3,268	3,418	3,431	3,385	3,514	3,451	39,172
Using Safety Belts	3,312	3,860	3,482	3,029	2,852	2,838	3,014	3,080	3,058	3,139	3,121	34,785
% Using Safety Belts	85.7%	89.9%	93.7%	85.2%	87.1%	86.8%	88.2%	89.8%	90.3%	89.3%	90.4%	88.8%

**Percent of Occupants Safety Belt Use All Ages**



**Percent of Occupant Safety Belt Use Deaths: All Ages**



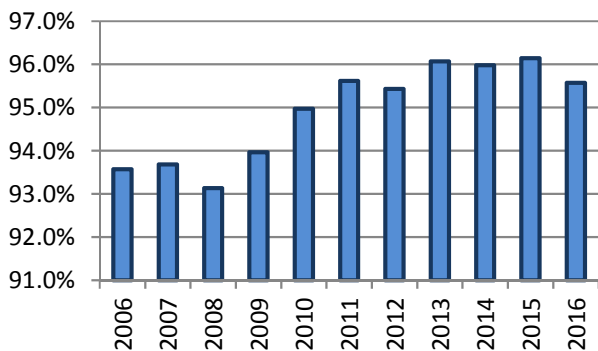
\*Excludes occupants in vehicle body types: motorcycle, moped, farm equipment, all-terrain vehicle, bus, train, other, and unknown

\*\*Restraint usage: infant, child, or booster seat, with or without airbag deployment.

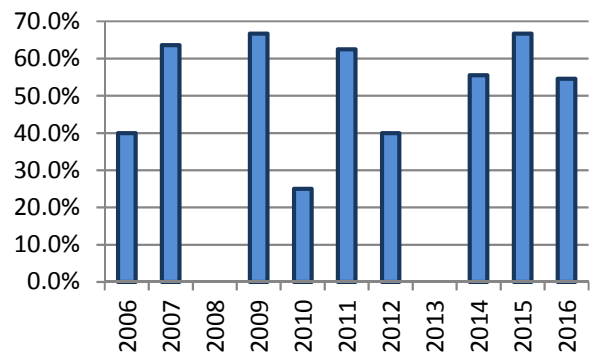
## Occupants\* 4-13 Years Old in Crashes - Safety Restraint Usage\*\* History

Years												
	2006	2007	2008	2009	2010	2011	2012	2013	2014	2015	2016	Totals
Occupants in Crashes	9,505	10,163	9,384	8,370	7,025	7,670	7,704	7,986	8,257	8,218	8,275	92,557
Occupants Using Safety Belts	8,894	9,521	8,740	7,865	6,672	7,334	7,352	7,672	7,925	7,901	7,909	87,785
% Using Safety Belts	93.6%	93.7%	93.1%	94.0%	95.0%	95.6%	95.4%	96.1%	96.0%	96.1%	95.6%	94.8%
Deaths	5	11	5	3	4	8	10	5	9	6	11	77
Using Safety Belts	2	7	0	2	1	5	4	0	5	4	6	36
% Using Safety Belts	40.0%	63.6%	0.0%	66.7%	25.0%	62.5%	40.0%	0.0%	55.6%	66.7%	54.5%	46.8%
Injuries	1,082	1,029	1,009	921	714	790	906	871	786	828	882	9,818
Using Safety Belts	872	857	848	783	620	713	799	795	715	746	796	8,544
% Using Safety Belts	80.6%	83.3%	84.0%	85.0%	86.8%	90.3%	88.2%	91.3%	91.0%	90.1%	90.2%	87.0%
Unharmd or Unknown	8,418	9,123	8,370	7,446	6,307	6,872	6,788	7,110	7,462	7,384	7,382	82,662
Using Safety Belts	8,020	8,657	7,892	7,080	6,051	6,616	6,549	6,877	7,205	7,151	7,107	79,205
% Using Safety Belts	95.3%	94.9%	94.3%	95.1%	95.9%	96.3%	96.5%	96.7%	96.6%	96.8%	96.3%	95.8%

**Percent of Occupants Safety Belt Use All Ages**



**Percent of Occupant Safety Belt Use Deaths: All Ages**



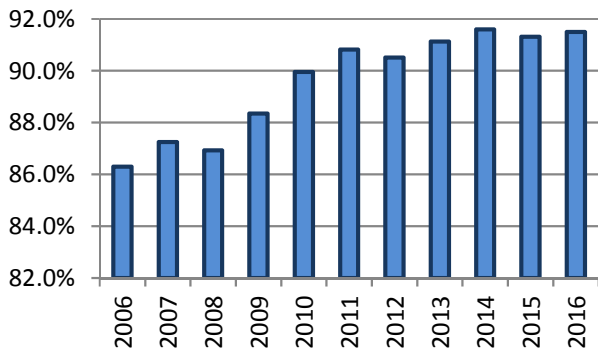
\*Excludes occupants in vehicle body types: motorcycle, moped, farm equipment, all-terrain vehicle, bus, train, other, and unknown

\*\*Excludes airbag only, helmet, eye protection, and unknown restraint use

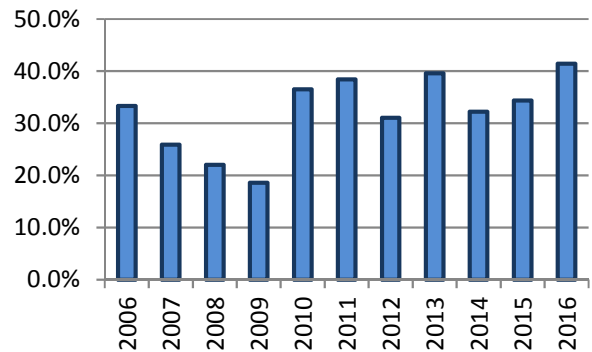
## All Occupants\* in Crashes - Safety Restraint Usage\*\* History Where the Speed Limit is Less Than or Equal to 45 mph

Years												
	2006	2007	2008	2009	2010	2011	2012	2013	2014	2015	2016	Totals
Occupants in Crashes	97,538	101,197	94,795	85,121	81,777	81,113	81,625	82,023	82,256	83,332	85,911	956,688
Occupants Using Safety Belts	84,176	88,292	82,399	75,202	73,564	73,664	73,885	74,745	75,348	76,098	78,606	855,979
% Using Safety Belts	86.3%	87.2%	86.9%	88.3%	90.0%	90.8%	90.5%	91.1%	91.6%	91.3%	91.5%	89.5%
Deaths	75	54	68	43	63	52	58	48	62	64	70	657
Using Safety Belts	25	14	15	8	23	20	18	19	20	22	29	213
% Using Safety Belts	33.3%	25.9%	22.1%	18.6%	36.5%	38.5%	31.0%	39.6%	32.3%	34.4%	41.4%	32.4%
Injuries	11,692	12,046	11,356	10,372	9,589	9,488	9,977	9,445	9,301	9,517	9,615	112,398
Using Safety Belts	9,350	9,934	9,315	8,531	8,159	8,253	8,702	8,359	8,310	8,495	8,650	96,058
% Using Safety Belts	80.0%	82.5%	82.0%	82.3%	85.1%	87.0%	87.2%	88.5%	89.3%	89.3%	90.0%	85.5%
Unharmd or Unknown	85,771	89,097	83,371	74,706	72,125	71,573	71,590	72,530	72,893	73,751	76,224	843,631
Using Safety Belts	74,801	78,344	73,069	66,663	65,382	65,391	65,165	66,367	67,018	67,581	69,927	759,708
% Using Safety Belts	87.2%	87.9%	87.6%	89.2%	90.7%	91.4%	91.0%	91.5%	91.9%	91.6%	91.7%	90.1%

**Percent of Occupants Safety Belt Use All Ages**



**Percent of Occupant Safety Belt Use Deaths: All Ages**



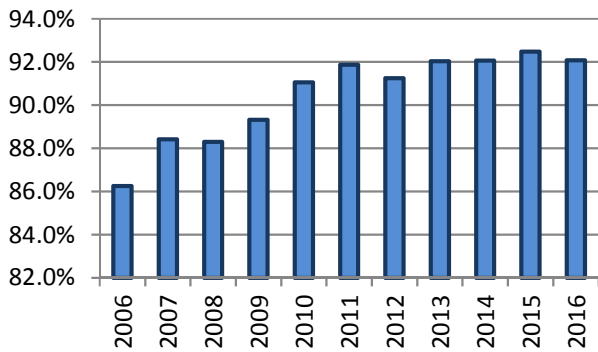
\*Excludes occupants in vehicle body types: motorcycle, moped, farm equipment, all-terrain vehicle, bus, train, other, and unknown

\*\*Excludes airbag only, helmet, eye protection, and unknown restraint use

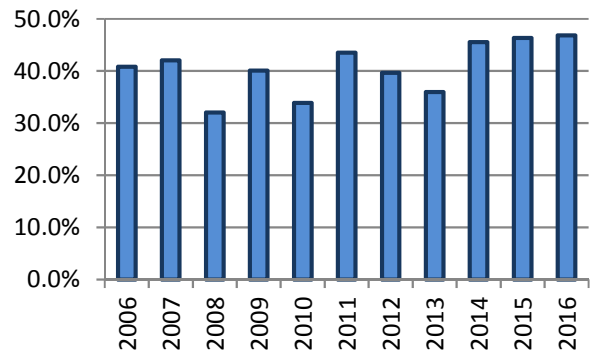
## All Occupants\* in Crashes - Safety Restraint Usage\*\* History Where the Speed Limit is Greater Than 45 mph

Years												
	2006	2007	2008	2009	2010	2011	2012	2013	2014	2015	2016	Totals
<b>Occupants in Crashes</b>	47,873	52,936	48,030	45,625	45,755	44,819	42,498	44,517	45,179	47,437	46,286	510,955
<b>Occupants Using Safety Belts</b>	41,295	46,806	42,408	40,755	41,664	41,176	38,781	40,975	41,595	43,872	42,624	461,951
<b>% Using Safety Belts</b>	86.3%	88.4%	88.3%	89.3%	91.1%	91.9%	91.3%	92.0%	92.1%	92.5%	92.1%	90.4%
<b>Deaths</b>	284	283	237	257	295	255	257	228	237	207	252	2,792
<b>Using Safety Belts</b>	116	119	76	103	100	111	102	82	108	96	118	1,131
<b>% Using Safety Belts</b>	40.8%	42.0%	32.1%	40.1%	33.9%	43.5%	39.7%	36.0%	45.6%	46.4%	46.8%	40.5%
<b>Injuries</b>	8,289	8,452	7,483	7,116	7,167	6,766	6,879	6,860	6,719	6,845	6,735	79,311
<b>Using Safety Belts</b>	5,937	6,351	5,609	5,379	5,685	5,445	5,489	5,667	5,578	5,756	5,567	62,463
<b>% Using Safety Belts</b>	71.6%	75.1%	75.0%	75.6%	79.3%	80.5%	79.8%	82.6%	83.0%	84.1%	82.7%	78.8%
<b>Unharmd or Unknown</b>	39,300	44,201	40,310	38,252	38,293	37,797	35,362	37,429	38,223	40,385	39,294	428,846
<b>Using Safety Belts</b>	35,242	40,336	36,723	35,273	35,879	35,619	33,190	35,226	35,909	38,020	36,937	398,354
<b>% Using Safety Belts</b>	89.7%	91.3%	91.1%	92.2%	93.7%	94.2%	93.9%	94.1%	93.9%	94.1%	94.0%	92.9%

**Percent of Occupants Safety Belt Use All Ages**



**Percent of Occupant Safety Belt Use Deaths: All Ages**



\*Excludes occupants in vehicle body types: motorcycle, moped, farm equipment, all-terrain vehicle, bus, train, other, and unknown

\*\*Excludes airbag only, helmet, eye protection, and unknown restraint use