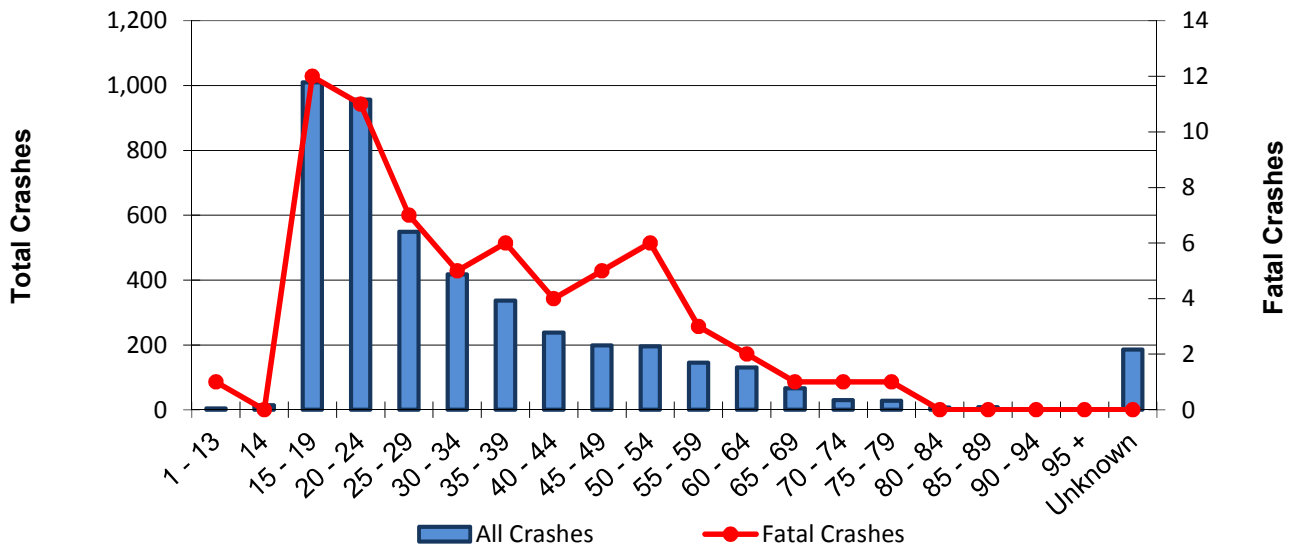


Speeding Drivers and Their Crashes by Age Group

Age	Speeding DRIVERS Involved in...			Crashes per Age Group		
	All Crashes	Fatal Crashes	Injury Crashes	Total	Fatal	Injury
1 - 13	4	1	2	4	1	2
14	14	0	7	14	0	7
15 - 19	1,010	12	311	1,008	12	310
20 - 24	957	11	284	953	11	283
25 - 29	549	7	164	546	7	162
30 - 34	418	5	125	418	5	125
35 - 39	337	6	112	337	6	112
40 - 44	238	4	81	238	4	81
45 - 49	199	5	74	198	5	74
50 - 54	196	6	61	196	6	61
55 - 59	145	3	43	145	3	43
60 - 64	130	2	30	130	2	30
65 - 69	66	1	24	66	1	24
70 - 74	30	1	6	30	1	6
75 - 79	28	1	14	28	1	14
80 - 84	7	0	3	7	0	3
85 - 89	8	0	4	8	0	4
90 - 94	2	0	0	2	0	0
95 +	0	0	0	0	0	0
Unknown	186	0	23	186	0	23
Total	4,524	65	1,368	4,472*	65*	1,351*

Speeding Drivers and Their Crashes by Age Group



* The crash totals do not reflect the sum of the columns above as multiple counting occurs when drivers of different age groups are involved in the same crash.

SPEED-RELATED CRASHES

Year	Crashes				People	
	Total	Fatal	Injury	PDO	Deaths	Injuries
2006	6,181	111	2,253	3,817	118	3,350
2007	9,495	92	2,757	6,646	102	3,988
2008	7,925	86	2,350	5,489	96	3,332
2009	6,109	82	1,888	4,139	93	2,710
2010	6,045	81	1,790	4,174	86	2,639
2011	6,060	81	1,814	4,165	88	2,547
2012	4,644	87	1,597	2,960	95	2,400
2013	5,773	73	1,693	4,007	76	2,461
2014	5,972	80	1,679	4,213	92	2,436
2015	5,536	89	1,538	3,909	100	2,276
2016	4,472	65	1,351	3,055	71	1,941
Total	68,212	927	20,710	46,574	1,017	30,080

Speed-Related Crashes

