

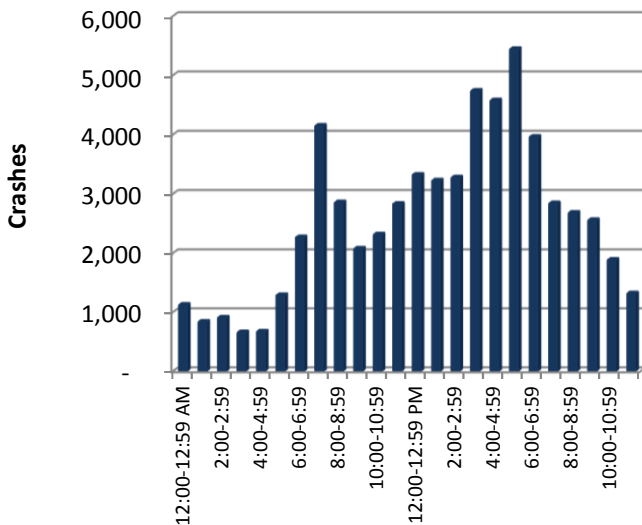
# TIME TRENDS

## Hourly

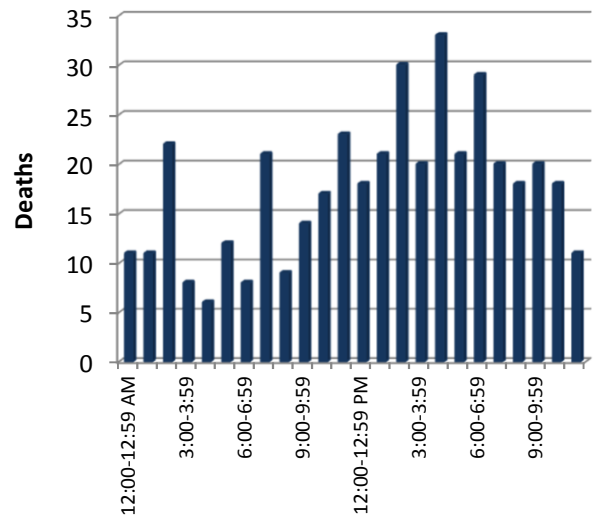


Time	Total Crashes	% of Total	Deaths	% of Deaths
<b>12:00-12:59 AM</b>	1,114	1.8%	11	2.6%
1:00-1:59	828	1.3%	11	2.6%
2:00-2:59	898	1.5%	22	5.1%
3:00-3:59	648	1.0%	8	1.9%
4:00-4:59	661	1.1%	6	1.4%
5:00-5:59	1,277	2.1%	12	2.8%
6:00-6:59	2,257	3.6%	8	1.9%
7:00-7:59	4,139	6.7%	21	4.9%
8:00-8:59	2,845	4.6%	9	2.1%
9:00-9:59	2,066	3.3%	14	3.3%
10:00-10:59	2,304	3.7%	17	4.0%
11:00-11:59	2,820	4.6%	23	5.4%
<b>12:00-12:59 PM</b>	3,312	5.4%	18	4.2%
1:00-1:59	3,214	5.2%	21	4.9%
2:00-2:59	3,266	5.3%	30	7.0%
3:00-3:59	4,727	7.6%	20	4.7%
4:00-4:59	4,566	7.4%	<b>33</b>	<b>7.7%</b>
5:00-5:59	<b>5,433</b>	<b>8.8%</b>	21	4.9%
6:00-6:59	3,951	6.4%	29	6.8%
7:00-7:59	2,830	4.6%	20	4.7%
8:00-8:59	2,671	4.3%	18	4.2%
9:00-9:59	2,547	4.1%	20	4.7%
10:00-10:59	1,876	3.0%	18	4.2%
11:00-11:59	1,308	2.1%	11	2.6%
Unknown	286	0.5%	8	1.9%
<b>Total</b>	<b>61,844</b>	<b>100%</b>	<b>429</b>	<b>100%</b>

Crashes by Time of Day



Deaths by Time of Day



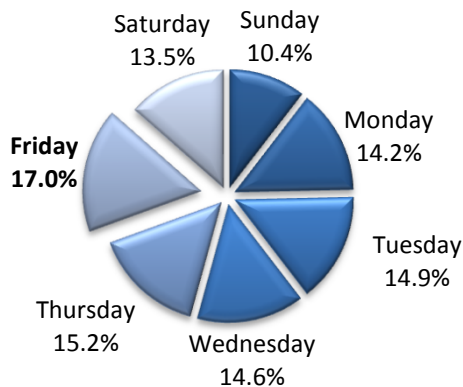
# Time Trends



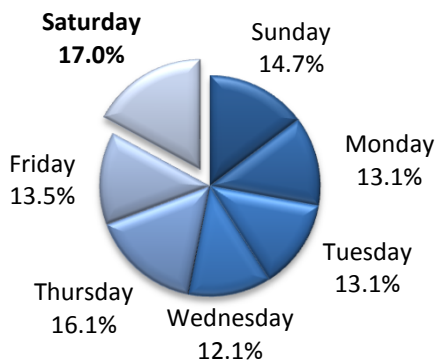
## Daily

Day	Crashes	% of Total	Deaths	% of Total
Sunday	6,447	10.4%	63	14.7%
Monday	8,784	14.2%	56	13.1%
Tuesday	9,227	14.9%	56	13.1%
Wednesday	9,051	14.6%	52	12.1%
Thursday	9,393	15.2%	69	16.1%
Friday	<b>10,515</b>	<b>17.0%</b>	58	13.5%
Saturday	8,350	13.5%	<b>73</b>	<b>17.0%</b>
Unknown	77	0.1%	2	0.5%
<b>Total</b>	<b>61,844</b>	<b>100%</b>	<b>429</b>	<b>100%</b>

## Crashes by Day of Week



## Deaths by Day of Week



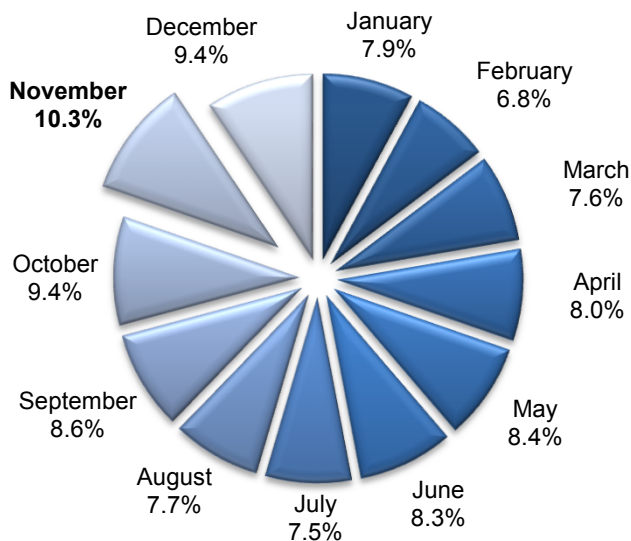
# Time Trends

## Monthly



Month	Crashes	% of Total	Deaths	% of Total
January	4,905	7.9%	25	5.8%
February	4,192	6.8%	32	7.5%
March	4,688	7.6%	27	6.3%
April	4,936	8.0%	36	8.4%
May	5,186	8.4%	34	7.9%
June	5,132	8.3%	43	10.0%
July	4,645	7.5%	45	10.5%
August	4,771	7.7%	30	7.0%
September	5,309	8.6%	38	8.9%
October	5,843	9.4%	30	7.0%
November	<b>6,358</b>	<b>10.3%</b>	<b>50</b>	<b>11.7%</b>
December	5,803	9.4%	37	8.6%
Unknown	76	0.1%	2	0.5%
<b>Total</b>	<b>61,844</b>	<b>100%</b>	<b>429</b>	<b>100%</b>

### Crashes by Month



### Deaths by Month

