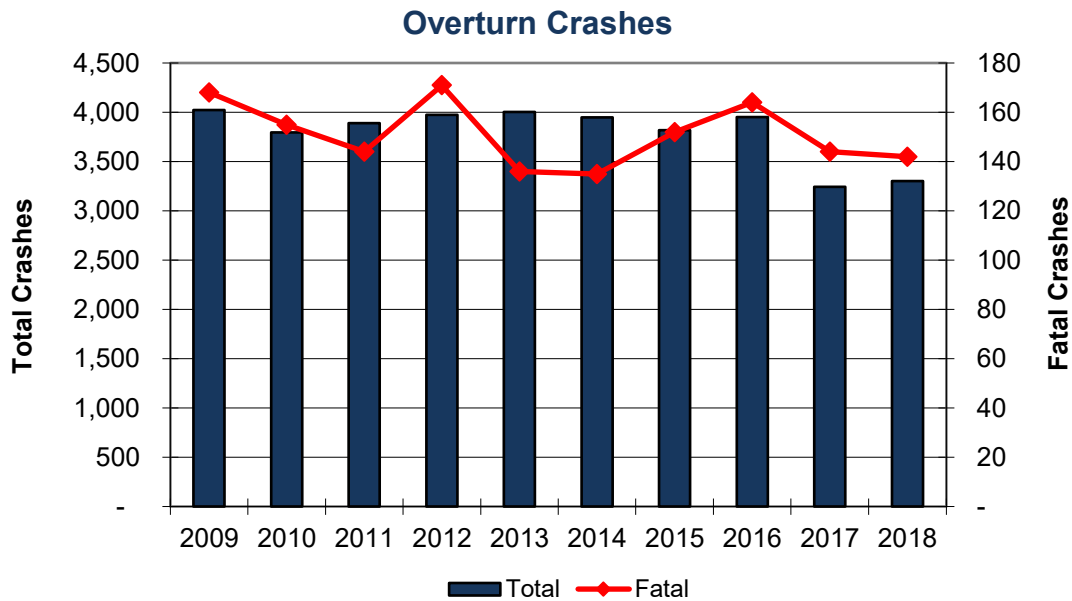


Vehicle Overturn Crashes

Year	Crashes				People	
	Total	Fatal	Injury	PDO	Deaths	Injuries
2009	4,024	168	2,405	1,451	187	3,523
2010	3,794	155	2,259	1,380	176	3,223
2011	3,888	144	2,308	1,436	157	3,260
2012	3,974	171	2,511	1,292	193	3,522
2013	4,003	136	2,292	1,575	139	3,237
2014	3,949	135	2,314	1,500	162	3,186
2015	3,817	152	2,219	1,446	171	3,126
2016	3,952	164	2,330	1,458	182	3,184
2017	3,243	144	1,852	1,246	153	2,481
2018	3,301	142	1,820	1,338	147	2,514
Total	37,945	1,511	22,310	14,122	1,667	31,256



In 2018, 5.08% of all crashes and 38.9% of all fatal crashes involve vehicles overturning.