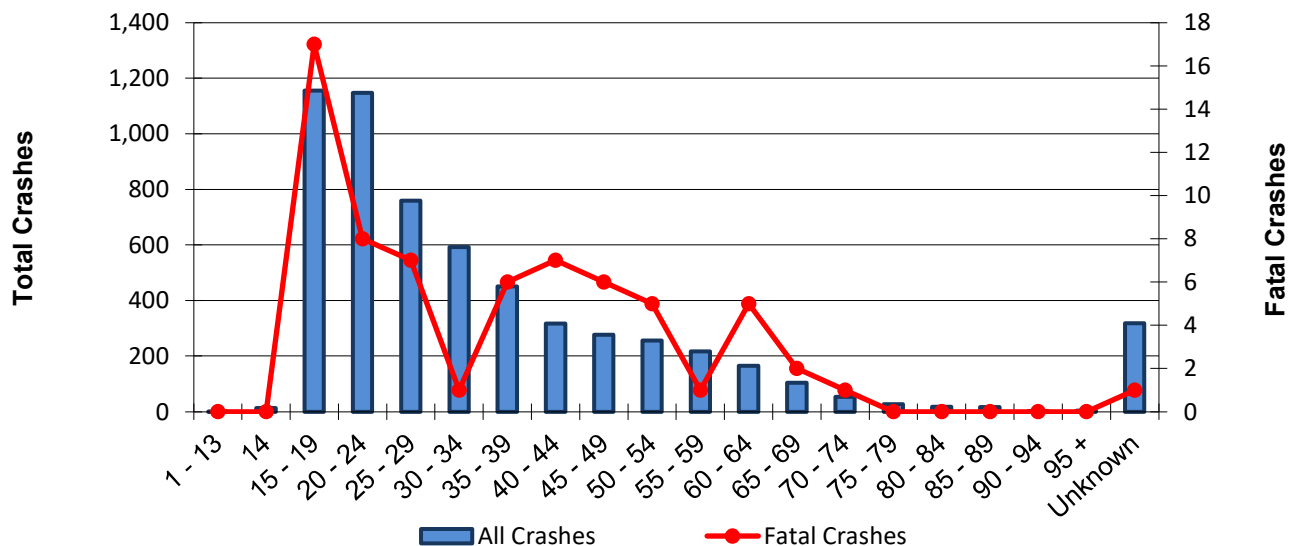


# Speeding Drivers and Their Crashes by Age Group

Age	Speeding DRIVERS Involved in...			Crashes per Age Group		
	All Crashes	Fatal Crashes	Injury Crashes	Total	Fatal	Injury
1 - 13	1	0	1	1	0	1
14	13	0	5	13	0	5
15 - 19	1,155	17	330	1,148	17	326
20 - 24	1,148	8	314	1,138	8	309
25 - 29	759	7	220	758	7	220
30 - 34	592	1	161	591	1	160
35 - 39	451	6	126	451	6	126
40 - 44	317	7	83	317	7	83
45 - 49	277	6	83	277	6	83
50 - 54	256	5	90	256	5	90
55 - 59	217	1	68	217	1	68
60 - 64	165	5	39	165	5	39
65 - 69	104	2	44	104	2	44
70 - 74	53	1	11	53	1	11
75 - 79	27	0	10	27	0	10
80 - 84	17	0	7	17	0	7
85 - 89	16	0	6	16	0	6
90 - 94	2	0	0	2	0	0
95 +	3	0	1	3	0	1
Unknown	318	1	38	316	1	37
<b>Total</b>	<b>5,891</b>	<b>65</b>	<b>1,637</b>	<b>5,812*</b>	<b>66*</b>	<b>1,612*</b>

Speeding Drivers and Their Crashes by Age Group



\* The crash totals do not reflect the sum of the columns above as multiple counting occurs when drivers of different age groups are involved in the same crash.

# SPEED-RELATED CRASHES

Year	Crashes				People	
	Total	Fatal	Injury	PDO	Deaths	Injuries
2009	6,109	82	1,888	4,139	93	2,710
2010	6,046	81	1,791	4,174	86	2,641
2011	6,061	81	1,814	4,166	88	2,547
2012	4,644	87	1,597	2,960	95	2,400
2013	5,777	73	1,696	4,008	76	2,467
2014	5,973	80	1,680	4,213	92	2,437
2015	5,551	89	1,544	3,918	100	2,285
2016	4,877	66	1,493	3,317	72	2,142
2017	4,337	65	1,393	2,879	73	2,021
2018	5,812	66	1,612	4,134	73	2,246
<b>Total</b>	<b>55,187</b>	<b>770</b>	<b>16,508</b>	<b>37,908</b>	<b>848</b>	<b>23,896</b>

## Speed-Related Crashes

