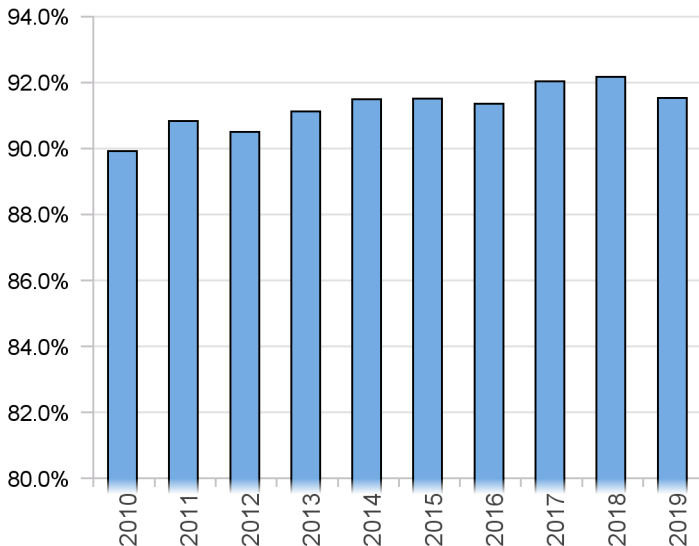


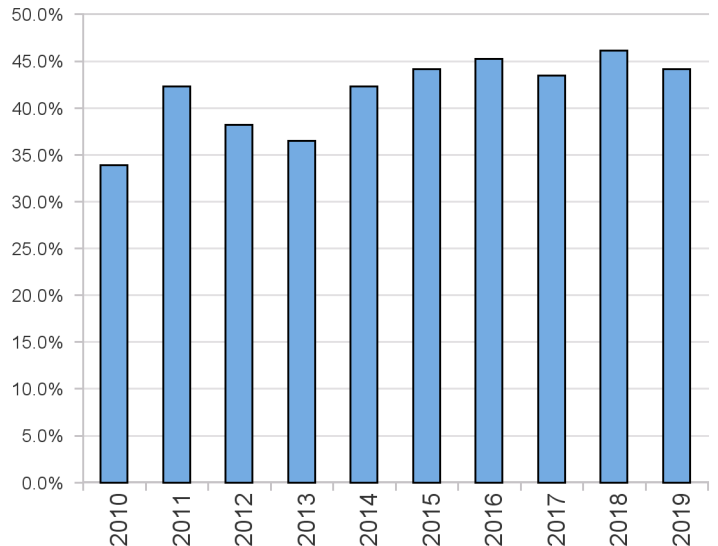
All Occupants* in Crashes - Safety Restraint Usage** History

Years											
	2010	2011	2012	2013	2014	2015	2016	2017	2018	2019	Totals
Occupants in Crashes	132,231	129,845	126,057	127,979	129,251	133,207	140,147	133,781	135,477	134,984	1,322,959
Occupants Using Safety Belts	118,895	117,936	114,086	116,607	118,245	121,903	128,015	123,129	124,855	123,554	1,207,225
% Using Safety Belt	89.9%	90.8%	90.5%	91.1%	91.5%	91.5%	91.3%	92.0%	92.2%	91.5%	91.3%
Deaths	363	312	317	277	300	272	325	359	299	333	3,157
Using Safety Belts	123	132	121	101	127	120	147	156	138	147	1,312
% Using Safety Belt	33.9%	42.3%	38.2%	36.5%	42.3%	44.1%	45.2%	43.5%	46.2%	44.1%	41.6%
Injuries	17,216	16,682	17,023	16,420	16,137	16,563	17,362	16,452	16,837	16,654	167,346
Using Safety Belt	14,192	14,065	14,333	14,121	13,985	14,431	15,099	14,472	14,954	14,711	144,363
% Using Safety Belt	82.4%	84.3%	84.2%	86.0%	86.7%	87.1%	87.0%	88.0%	88.8%	88.3%	86.3%
Unharmd or Unknown	114,652	112,851	108,717	111,282	112,814	116,372	122,460	116,970	118,341	117,997	1,152,456
Using Safety Belts	104,580	103,739	99,632	102,385	104,133	107,352	112,769	108,501	109,763	108,696	1,061,550
% Using Safety Belt	91.2%	91.9%	91.6%	92.0%	92.3%	92.2%	92.1%	92.8%	92.8%	92.1%	92.1%

Percent of Occupants Safety Belt Use All Ages



Percent of Occupant Safety Belt Use Deaths: All Ages



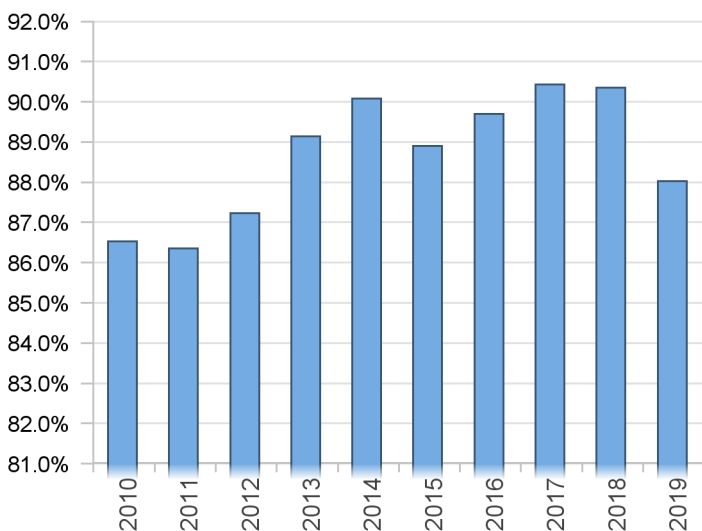
*Excludes occupants in vehicle body types: motorcycle, moped, farm equipment, all-terrain vehicle, bus, train, other, and unknown

**Excludes airbag only, helmet, eye protection, and unknown restraint use

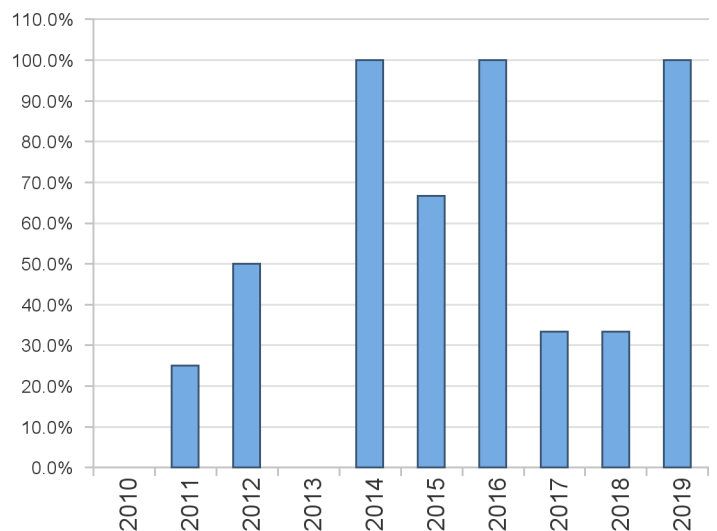
All Occupants* 1-3 Years Old in Crashes - Safety Restraint Usage** History

Years											
	2010	2011	2012	2013	2014	2015	2016	2017	2018	2019	Totals
Occupants in Crashes	3,490	3,545	3,712	3,691	3,618	3,782	3,871	3,636	3,502	3,483	36,330
Occupants Using Safety Belts	3,020	3,061	3,238	3,290	3,259	3,362	3,472	3,288	3,164	3,066	32,220
% Using Safety Belt	86.5%	86.3%	87.2%	89.1%	90.1%	88.9%	89.7%	90.4%	90.3%	88.0%	88.7%
Deaths	3	4	4	4	1	3	1	3	3	2	28
Using Safety Belts	0	1	2	0	1	2	1	1	1	2	11
% Using Safety Belt	0.0%	25.0%	50.0%	0.0%	100.0%	66.7%	100.0%	33.3%	33.3%	100.0%	39.3%
Injuries	212	273	290	255	232	251	276	249	221	193	2,452
Using Safety Belt	168	221	221	208	200	208	233	220	186	156	2,021
% Using Safety Belt	79.2%	81.0%	76.2%	81.6%	86.2%	82.9%	84.4%	88.4%	84.2%	80.8%	82.4%
Unharmful or Unknown	3,275	3,268	3,418	3,432	3,385	3,528	3,594	3,384	3,278	3,288	33,850
Using Safety Belts	2,852	2,838	3,014	3,081	3,058	3,152	3,238	3,067	2,977	2,908	30,185
% Using Safety Belt	87.1%	86.8%	88.2%	89.8%	90.3%	89.3%	90.1%	90.6%	90.8%	88.4%	89.2%

Percent of Occupants Safety Belt Use Ages 1-3



Percent of Occupant Safety Belt Use Deaths: Ages 1-3



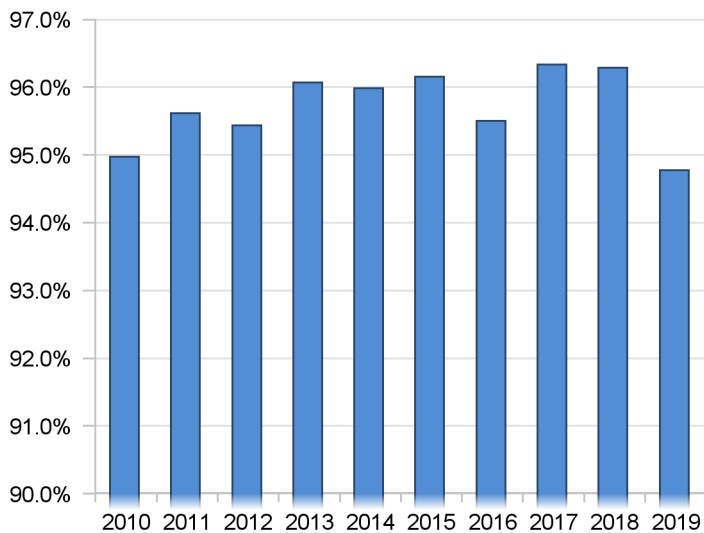
*Excludes occupants in vehicle body types: motorcycle, moped, farm equipment, all-terrain vehicle, bus, train, other, and unknown

**Restraint usage: infant, child, or booster seat, with or without airbag deployment

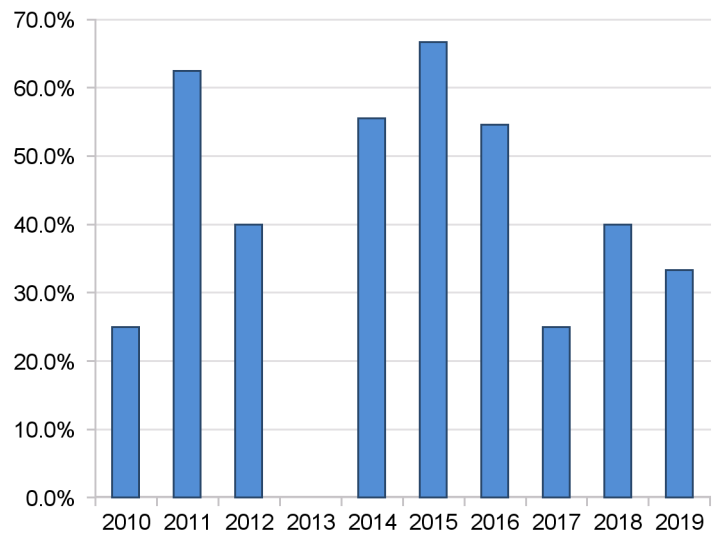
All Occupants* 4-13 Years Old in Crashes - Safety Restraint Usage** History

Years											
	2010	2011	2012	2013	2014	2015	2016	2017	2018	2019	Totals
Occupants in Crashes	7,026	7,671	7,706	7,987	8,261	8,235	8,607	8,353	8,024	8,043	79,913
Occupants Using Safety Belts	6,673	7,335	7,354	7,673	7,929	7,918	8,220	8,047	7,726	7,623	76,498
% Using Safety Belt	95.0%	95.6%	95.4%	96.1%	96.0%	96.2%	95.5%	96.3%	96.3%	94.8%	95.7%
Deaths	4	8	10	5	9	6	11	8	5	9	75
Using Safety Belts	1	5	4	0	5	4	6	2	2	3	32
% Using Safety Belt	25.0%	62.5%	40.0%	0.0%	55.6%	66.7%	54.5%	25.0%	40.0%	33.3%	42.7%
Injuries	714	791	906	872	786	829	944	867	814	810	8,333
Using Safety Belt	620	714	799	796	715	747	852	788	739	729	7,499
% Using Safety Belt	86.8%	90.3%	88.2%	91.3%	91.0%	90.1%	90.3%	90.9%	90.8%	90.0%	90.0%
Unharmful or Unknown	6,308	6,872	6,790	7,110	7,466	7,400	7,652	7,478	7,205	7,224	71,505
Using Safety Belts	6,052	6,616	6,551	6,877	7,209	7,167	7,362	7,257	6,985	6,891	68,967
% Using Safety Belt	95.9%	96.3%	96.5%	96.7%	96.6%	96.9%	96.2%	97.0%	96.9%	95.4%	96.5%

Percent of Occupants Safety Belt Use Ages 4-13



Percent of Occupant Safety Belt Use Deaths: Ages 4-13



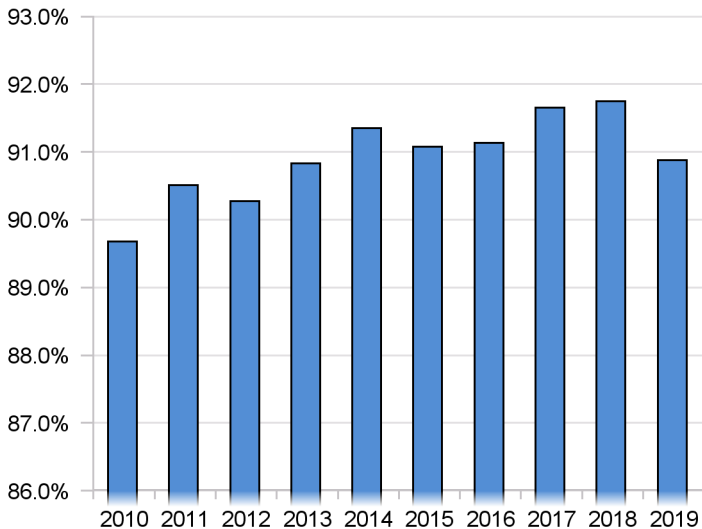
*Excludes occupants in vehicle body types: motorcycle, moped, farm equipment, all-terrain vehicle, bus, train, other, and unknown

**Excludes airbag only, helmet, eye protection, and unknown restraint use

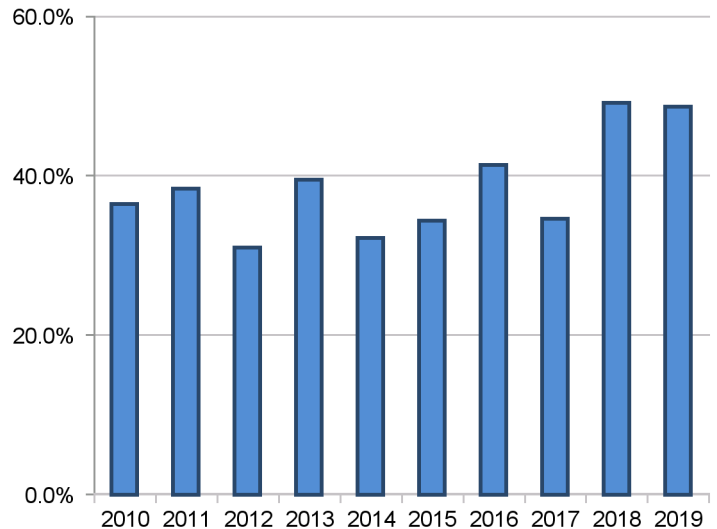
All Occupants* in Crashes - Safety Restraint Usage** History Where the Speed Limit is Less Than or Equal to 45 mph

Years											
	2010	2011	2012	2013	2014	2015	2016	2017	2018	2019	Totals
Occupants in Crashes	82,037	81,387	81,852	82,299	82,509	83,732	89,988	84,602	84,165	83,814	836,385
Occupants Using Safety Belts	73,570	73,666	73,894	74,755	75,374	76,261	82,007	77,540	77,220	76,166	760,453
% Using Safety Belt	89.7%	90.5%	90.3%	90.8%	91.4%	91.1%	91.1%	91.7%	91.7%	90.9%	90.9%
Deaths	63	52	58	48	62	64	70	75	65	80	637
Using Safety Belts	23	20	18	19	20	22	29	26	32	39	248
% Using Safety Belt	36.5%	38.5%	31.0%	39.6%	32.3%	34.4%	41.4%	34.7%	49.2%	48.8%	38.9%
Injuries	9,590	9,488	9,977	9,449	9,303	9,538	10,216	9,671	9,857	10,146	97,235
Using Safety Belt	8,160	8,253	8,702	8,363	8,312	8,513	9,159	8,724	8,978	9,147	86,311
% Using Safety Belt	85.1%	87.0%	87.2%	88.5%	89.3%	89.3%	89.7%	90.2%	91.1%	90.2%	88.8%
Unharmd or Unknown	72,384	71,847	71,817	72,802	73,144	74,130	79,702	74,856	74,243	73,588	738,513
Using Safety Belts	65,387	65,393	65,174	66,373	67,042	67,726	72,819	68,790	68,210	66,980	673,894
% Using Safety Belt	90.3%	91.0%	90.8%	91.2%	91.7%	91.4%	91.4%	91.9%	91.9%	91.0%	91.3%

Percent of Occupants Safety Belt Use All Ages Speed Limit <= 45 mph



Percent of Occupants Safety Belt Use Deaths Speed Limit <= 45 mph



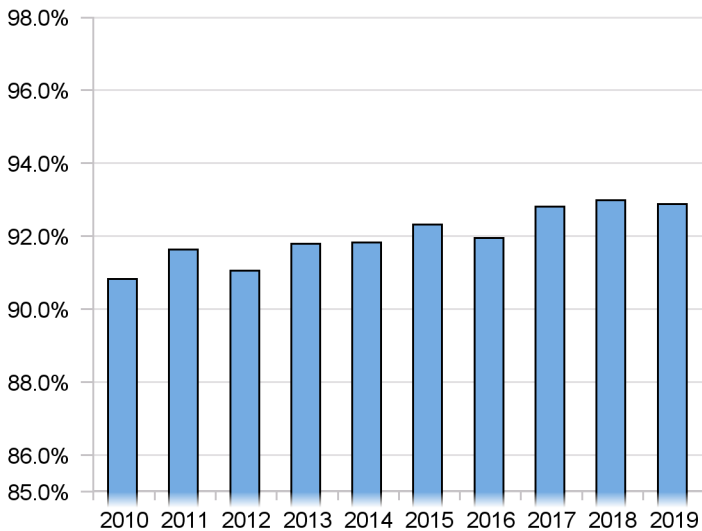
*Excludes occupants in vehicle body types: motorcycle, moped, farm equipment, all-terrain vehicle, bus, train, other, and unknown

**Excludes airbag only, helmet, eye protection, and unknown restraint use

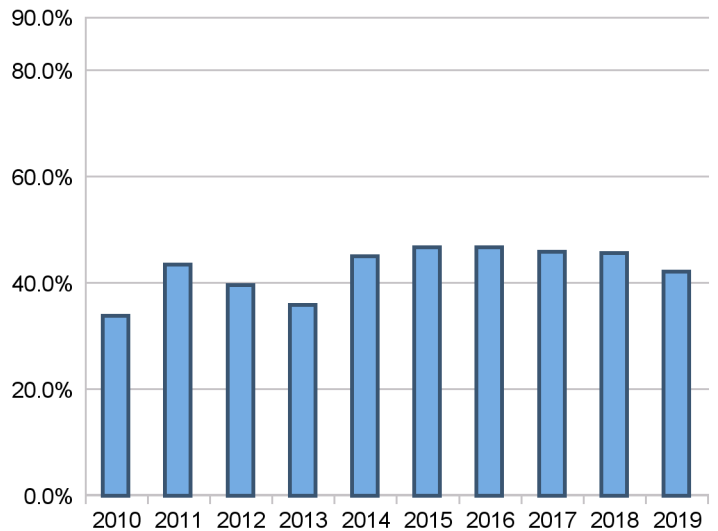
All Occupants* in Crashes - Safety Restraint Usage** History Where the Speed Limit is Greater Than 45 mph

	Years										Totals
	2010	2011	2012	2013	2014	2015	2016	2017	2018	2019	
Occupants in Crashes	45,878	44,951	42,589	44,652	45,321	47,712	47,533	46,855	49,200	48,264	462,955
Occupants Using Safety Belts	41,669	41,189	38,783	40,991	41,620	44,049	43,708	43,485	45,751	44,826	426,071
% Using Safety Belt	90.8%	91.6%	91.1%	91.8%	91.8%	92.3%	92.0%	92.8%	93.0%	92.9%	92.0%
Deaths	295	255	257	228	237	207	252	281	232	251	2,495
Using Safety Belts	100	111	102	82	107	97	118	129	106	106	1,058
% Using Safety Belt	33.9%	43.5%	39.7%	36.0%	45.1%	46.9%	46.8%	45.9%	45.7%	42.2%	42.4%
Injuries	7,169	6,772	6,879	6,871	6,723	6,868	6,899	6,555	6,782	6,239	67,757
Using Safety Belt	5,687	5,451	5,489	5,677	5,582	5,778	5,715	5,549	5,797	5,331	56,056
% Using Safety Belt	79.3%	80.5%	79.8%	82.6%	83.0%	84.1%	82.8%	84.7%	85.5%	85.4%	82.7%
Unharmred or Unknown	38,414	37,924	35,453	37,553	38,361	40,637	40,382	40,019	42,186	41,774	392,703
Using Safety Belts	35,882	35,627	33,192	35,232	35,931	38,174	37,875	37,807	39,848	39,389	368,957
% Using Safety Belt	93.4%	93.9%	93.6%	93.8%	93.7%	93.9%	93.8%	94.5%	94.5%	94.3%	94.0%

Percent of Occupants Safety Belt Use All Ages Speed Limit > 45 mph



Percent of Occupants Safety Belt Use Deaths All Ages Speed Limit > 45 mph



*Excludes occupants in vehicle body types: motorcycle, moped, farm equipment, all-terrain vehicle, bus, train, other, and unknown

**Excludes airbag only, helmet, eye protection, and unknown restraint use