

Northeast District Office
121 S.W. 21st Street
Topeka, KS 66612-1429



phone: 785-296-3881
fax: 785-296-3720
www.ksdot.org

Mike King, Secretary

Sam Brownback, Governor

FOR IMMEDIATE RELEASE

June 13, 2012

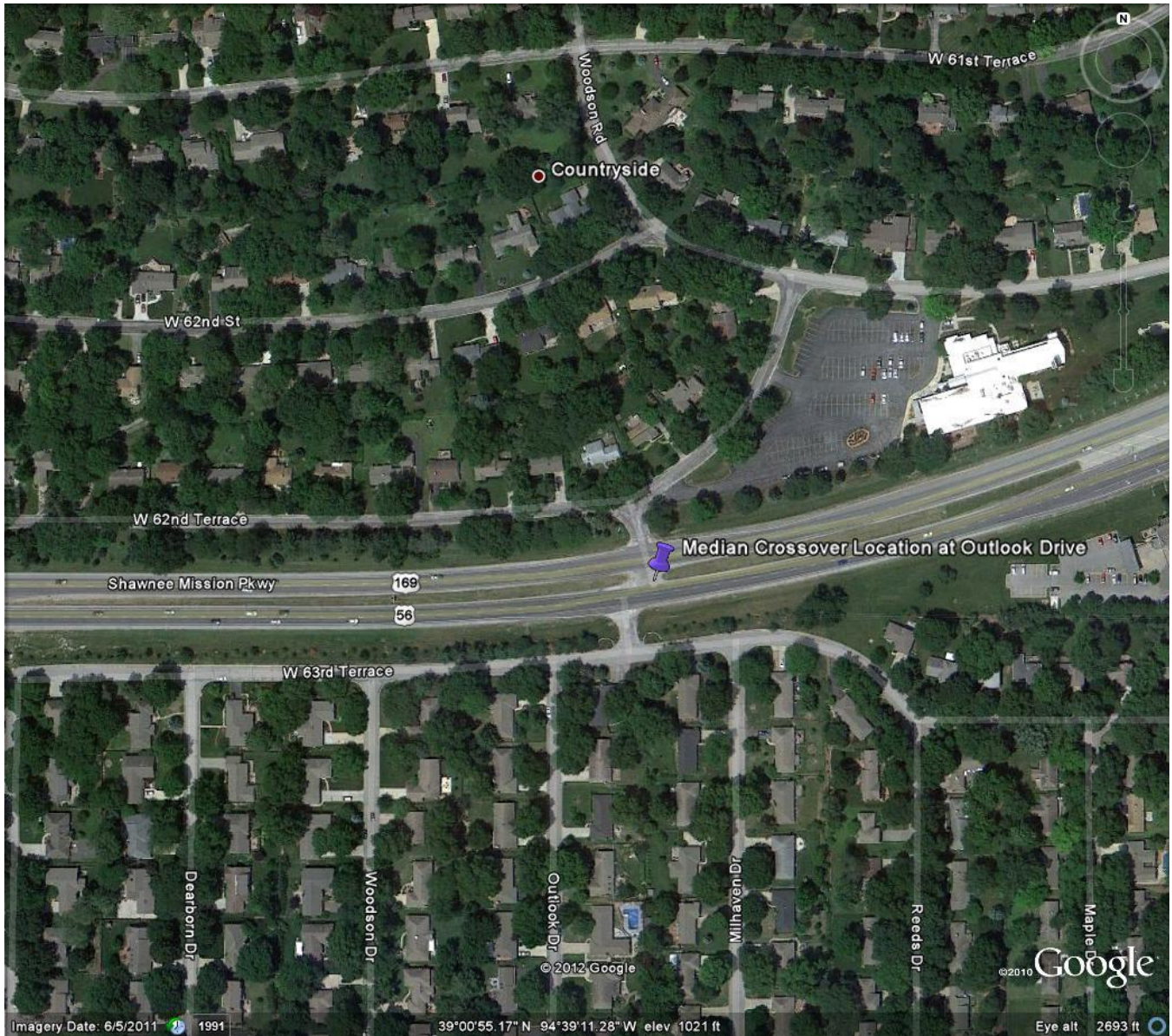
News Contact: Kimberly Qualls, (785) 640-9340 or kqualls@ksdot.org

Crossover Removal Work to Begin on US-56 (Shawnee Mission Parkway) in Johnson County

On **Monday, June 18 at 9:00 a.m.**, Kansas Department of Transportation maintenance crews will begin work to remove a paved median crossover near Outlook Drive on US-56 (Shawnee Mission Parkway) in Johnson County. (See map below for median crossover location.) The crossover is being permanently removed due to safety concerns for the traveling public. **Crews will complete work daily, Monday/Friday, June 18-29 between 9:00 a.m. and 3:00 p.m.**

Most of the project work will take place on the shoulder and in the median on US-56 (Shawnee Mission Parkway), though there will be some left lane closures in both directions on US-56 (Shawnee Mission Parkway) at the crossover location. Traffic will be directed through the project work zone via signage and cones. Advance message boards will alert drivers to the lane closures. Drivers should expect some delays during the project working hours. Updated daily traffic information for this project can be viewed online at: www.ksdot.org/kcmetro/laneclose.asp.

The Kansas Department of Transportation urges all motorists to be alert, obey the warning signs, and "Give 'Em a Brake!" when approaching and driving through the project work zone. For more information on this median crossover removal project, please contact Kimberly Qualls, Northeast Kansas Public Affairs Manager, at (785) 640-9340.



###

This information is available in alternative accessible formats. To obtain an alternative format, contact KDOT Transportation Information, Eisenhower Building, 700 SW Harrison, 2nd Floor West, Topeka, Kan., 66603-3754, or (785) 296-3585 (Voice)/Hearing Impaired - 711.

Click below to connect to KDOT's Social Networks:

