

Northwest District Office
312 S. Second
Norton, KS 67654-0350



phone: 785-877-3315
fax: 785-877-2531
www.ksdot.org

Mike King, Secretary

Sam Brownback, Governor

TRAFFIC ALERT

FOR IMMEDIATE RELEASE

News Contact: Kimberly Qualls, (785) 640-9340 or kqualls@ksdot.org

For Friday/Monday, June 15-18, 2012 in Johnson County

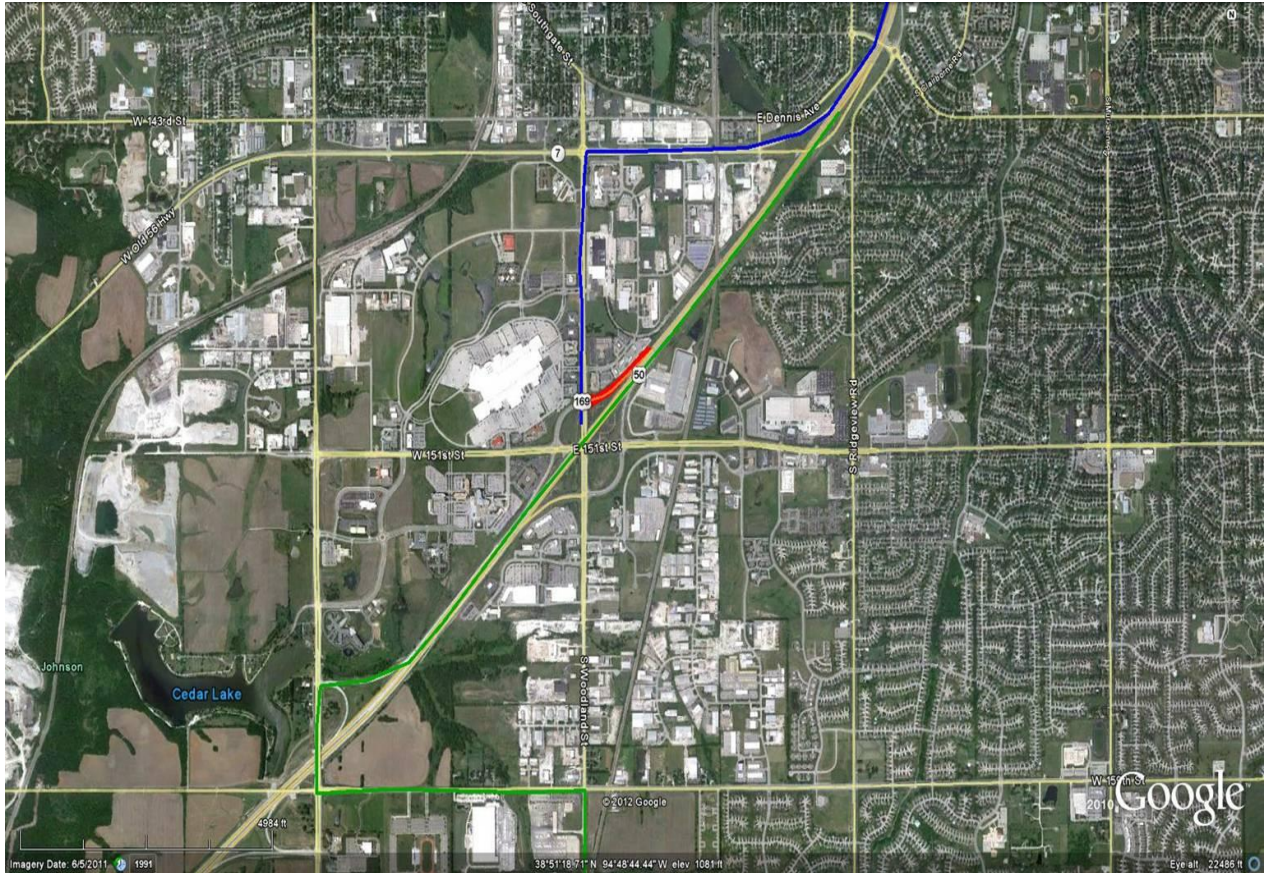
I-35

EXPECT DELAYS! Southbound I-35 to K-7/US-169 (151st Street) exit ramp will close for pavement repair work beginning at 8:00 p.m. on Friday, June 15 and will reopen to all traffic at 5:00 a.m. on Monday, June 18.

Message boards will alert drivers to the ramp closure. No marked detours will be provided. Drivers should expect minor delays and must use alternate routes during the ramp closure. Suggested detour route: Southbound I-35 traffic can exit early at the Old US-56 interchange and head west to K-7 then south to US-169 or proceed past the closed exit, exiting at the Lone Elm Road/159th Street interchange and head south on Lone Elm Road then east on 159th Street to K-7/US-169. (See aerial map below for suggested detour routes.)

Updated daily traffic information for this resurfacing project can be viewed online at: www.ksdot.org/kcmetro/laneclose.asp. The Kansas Department of Transportation urges all motorists to be alert, obey the warning signs, and "Give 'Em a Brake!" when approaching and driving through the project work zone. (KDOT Project #35-46 KA 2766-01)

Project work is scheduled to be completed on **Monday, June 18**, weather permitting.



###

This information is available in alternative accessible formats. To obtain an alternative format, contact KDOT Transportation Information, Eisenhower Building, 700 SW Harrison, 2nd Floor West, Topeka, Kan., 66603-3754, or (785) 296-3585 (Voice)/Hearing Impaired - 711.

Click below to connect to KDOT's Social Networks:

