

Northeast District Office
121 S.W. 21st Street
Topeka, KS 66612-1429



phone: 785-296-3881
fax: 785-296-3720
www.ksdot.org

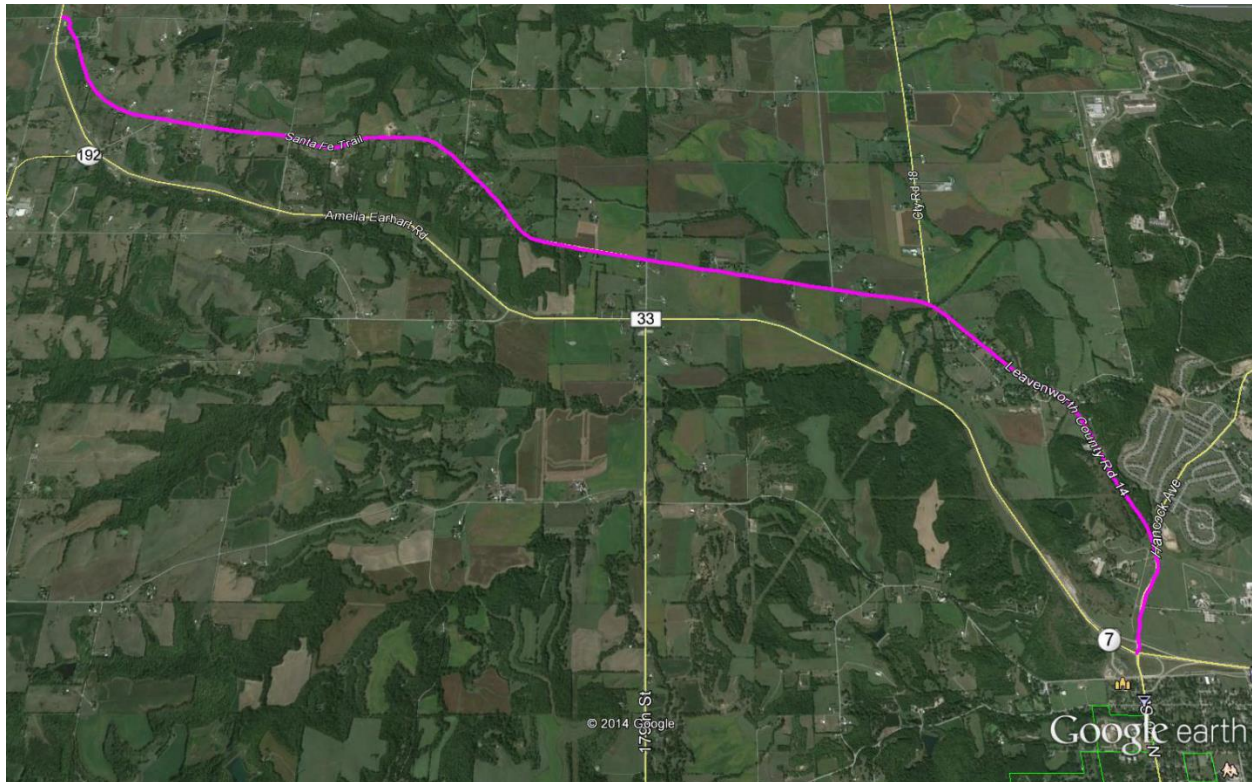
Mike King, Secretary

Sam Brownback, Governor

FOR IMMEDIATE RELEASE

July 2, 2014

News Contact: Kimberly Qualls, (785) 640-9340 or kqualls@ksdot.org
Michelle Anschutz, (785) 486-2142 or michelle@ksdot.org



U.S. 73/K-7 Pavement Replacement & Bridge Repair Project Begins in Leavenworth County

On **Monday, July 7**, a pavement replacement and bridge repair project will begin on an 8.67-mile stretch of U.S. 73/K-7 from the north junction of Leavenworth County Road 14 south to 16th Street in Leavenworth County. Project work includes replacement of the existing concrete pavement and sub-base in-kind with the same

number of lanes and pavement and shoulder width that exists today. Repair work will also be completed on the Salt Creek and 20th Street Bridges, including deck patching and polymer overlay, hand rail repairs and new guardrail ends. Work will take place during daylight hours (sunrise to sunset), Monday through Friday with some occasional Saturday work.

Traffic control installation work will occur the **week of June 30-July 3**. Then beginning on **Monday, July 7 at 8:00 a.m.**, northbound and southbound U.S. 73/K-7 will be closed to all traffic starting at the north junction of Leavenworth County Road 14 and U.S. 73/K-7 to the 20th Street Interchange in Leavenworth for Phase One construction work. U.S. 73/K-7 through traffic will detour via Leavenworth County Road 14/Santa Fe Trail (Old U.S. 73) during this phase. Access to local residents only who live along the closed portion of U.S. 73/K-7 will be provided via the intersecting adjacent side roads during Phase One construction.

Construction work will be completed in three phases and marked detour routes will be provided for each phase. Advance separate notification will be sent out for each phase of project construction providing detailed traffic impact information.

You can view U.S. 73/K-7 construction project information detailing construction phasing, traffic impacts and detour routes at: <http://www.ksdot.org/kcMetro/press.asp>.

Drivers should expect delays and must allow extra time during their daily commutes. The Kansas Department of Transportation urges all motorists to be alert, obey the warning signs, and “Give ‘Em a Brake!” when approaching and driving through the project work zone.

KOSS Construction Company (Topeka, KS) is the primary contractor on this pavement replacement project with a total contract cost of \$12.6 million. **Project work is scheduled to be completed in late December 2014, weather permitting.**

This project is funded by T-WORKS, the transportation program passed by the Kansas Legislature in May 2010. Find out more about these and other T-WORKS projects at: <http://kdotapp.ksdot.org/TWorks/>.

For questions or additional information on this project, please contact Kimberly Qualls, Northeast Kansas Public Affairs Manager, at (785) 640-9340, or Michelle Anschutz, Construction Manager, at (785) 486-2142. (KDOT Project #73-7 KA-3529-01)

###

This information is available in alternative accessible formats. To obtain an alternative format, contact KDOT Transportation Information, Eisenhower Building, 700 SW Harrison, 2nd Floor West, Topeka, Kan., 66603-3754, or (785) 296-3585 (Voice)/Hearing Impaired - 711.

Click below to connect to NE Kansas KDOT's Social Networks:

