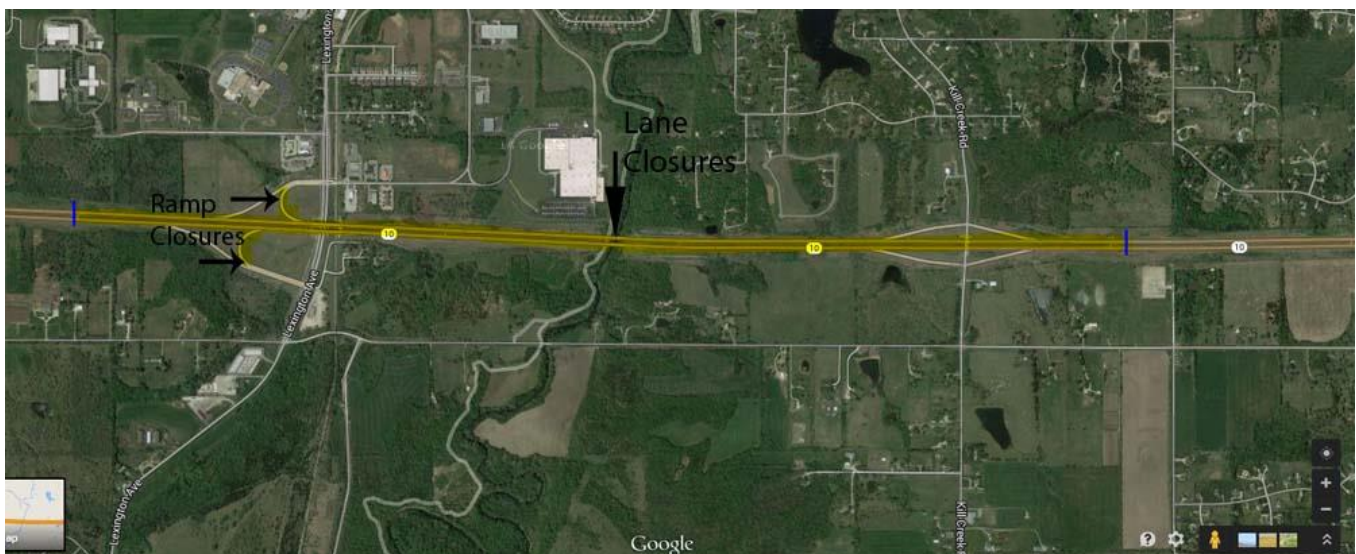


FOR IMMEDIATE RELEASE

September 22, 2014

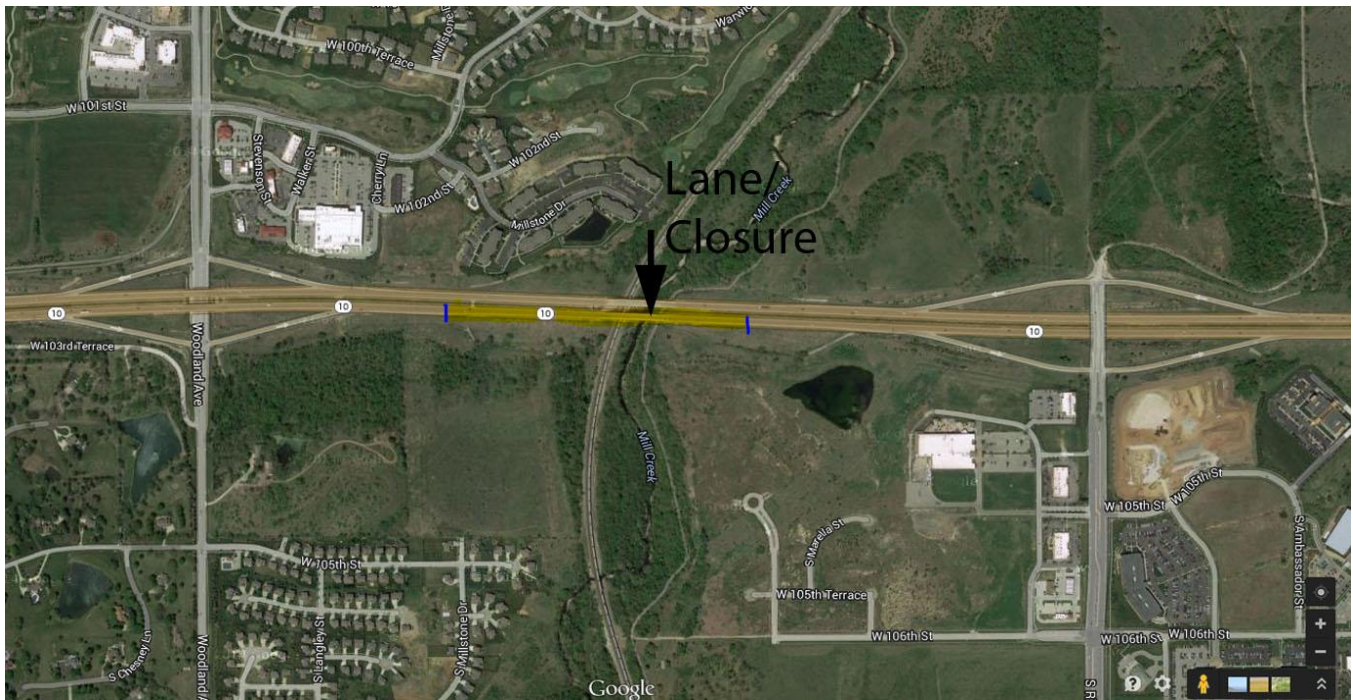
News Contacts: Kimberly Qualls, (785) 640-9340 or kqualls@ksdot.org
Joshua Welge, (913) 764-4525 or joshua@ksdot.org



Eastbound and westbound K-10 over Lexington Avenue and Kill Creek Road Bridges Project Location.

K-10 Multi-Bridge Repair Project to Begin in Johnson County

On **Monday, September 29**, a repair project will begin on the eastbound and westbound K-10 Bridges over Lexington Avenue and Kill Creek Road and eastbound K-10 only over Mill Creek in Johnson County. Project work includes expansion joint replacement and general repairs on all the bridges. Work will take place daily, Monday through Friday during daylight hours.



Eastbound K-10 over Mill Creek Bridge Project Location.

On **Monday-Tuesday, September 29-30**, crews will be staging equipment along the highway right of way. Beginning at **6:00 a.m. on Wednesday, October 1**, westbound K-10 over the Lexington Avenue and Kill Creek Road bridges will be reduced to one open lane and beginning at **6:00 a.m. on Thursday, October 2**, eastbound K-10 over the Lexington Avenue and Kill Creek Road bridges will be reduced to one open lane through a continuous work zone over both bridges, 24/7 round the clock, throughout the project duration. Then beginning at **6:00 a.m. on Friday, October 3**, eastbound K-10 over the Mill Creek bridge will be reduced to one open lane, 24/7 round the clock, throughout the project duration. (See maps above for project location.)

In addition, the westbound K-10 to Lexington Avenue exit ramp will be closed beginning at **6:00 a.m. on Wednesday, October 1**, and the Lexington Avenue to eastbound K-10 entrance ramp will be closed **beginning at 6:00 a.m. on Thursday, October 2**. Both ramps will remain closed, 24/7 round the clock, through early to mid-November 2014. A marked detour will be provided. Traffic will detour via Lexington Avenue/83rd Street and Kill Creek Roads in DeSoto. (See marked detour map below.)

Traffic will be directed through the project work zone via concrete safety barrier, signage and arrow boards. There will be a 12-foot lane width restriction through the project work zone throughout the project duration.

Advance message boards will alert traffic to the lane and ramp closures. Drivers should expect delays, especially during peak morning and evening rush hours, and are encouraged to allow extra time for their daily commutes.

Updated traffic information for this project and for the entire Kansas City Metro Area can be viewed online: www.ksdot.org/kcmetro/laneclose.asp.

The Kansas Department of Transportation urges all motorists to be alert, obey the warning signs, and “Give ‘Em a Brake!” when approaching and driving through the project work zone.

PCI Roads (St. Michael, MN) is the primary contractor on this bridge repair project with a total contract cost of \$1.027 million. **The scheduled completion date for the project is early December 2014, weather permitting.**

This project is funded by T-WORKS, the transportation program passed by the Kansas Legislature in May 2010. Find out more about this and other T-WORKS projects at: <http://kdotapp.ksdot.org/TWorks/>.

For more information on this bridge repair project, please contact Kimberly Qualls, Northeast Kansas Public Affairs Manager, at (785) 640-9340, or Joshua Welge, Field Engineering Administrator, at (913) 764-4525. (KDOT Project #10-46 KA-3971-01)

###

This information is available in alternative accessible formats. To obtain an alternative format, contact KDOT Public Affairs, Eisenhower Building, 700 SW Harrison, 2nd Floor West, Topeka, Kan., 66603-3754, or (785) 296-3585 (Voice)/Hearing Impaired - 711.

Click below to connect to KDOT’s Social Networks:



CMS#1

**EXIT TO
LEX. AVE
CLOSED**

**FOLLOW
DETOUR**

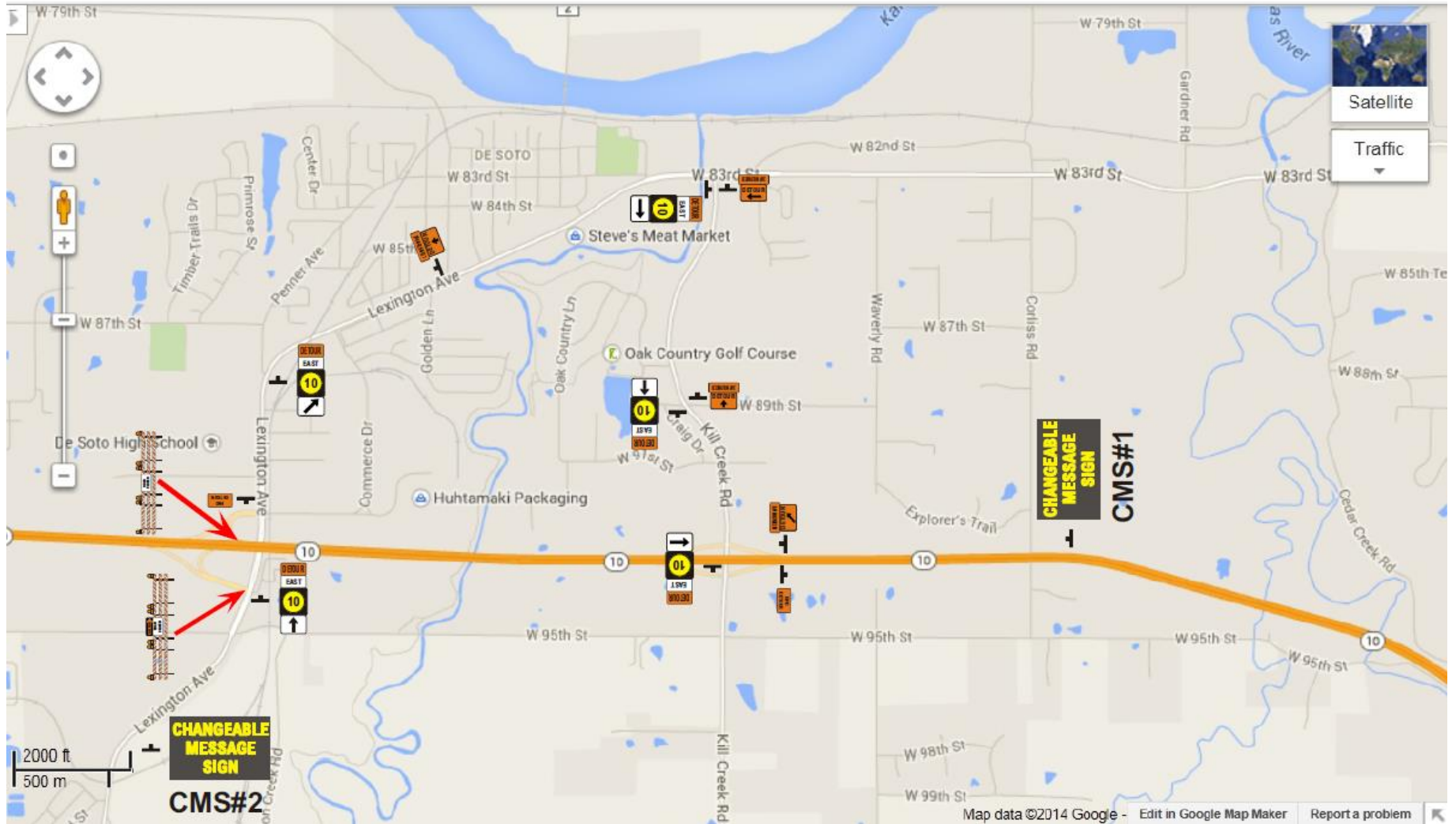
CMS#2

**RAMP TO
EB K-10
CLOSED**

**FOLLOW
DETOUR**



PCI
K-10 BRIDGES
DRAWN BY TODD UBBEN
GUN-KO TRAFFIC CONTROL INC
913-764-4540



K-10 and Lexington Avenue Interchange Ramp Closure Detour Map.