

Northeast District Office
121 S.W. 21st Street
Topeka, KS 66612-1429



phone: 785-296-3881
fax: 785-296-3720
www.ksdot.org

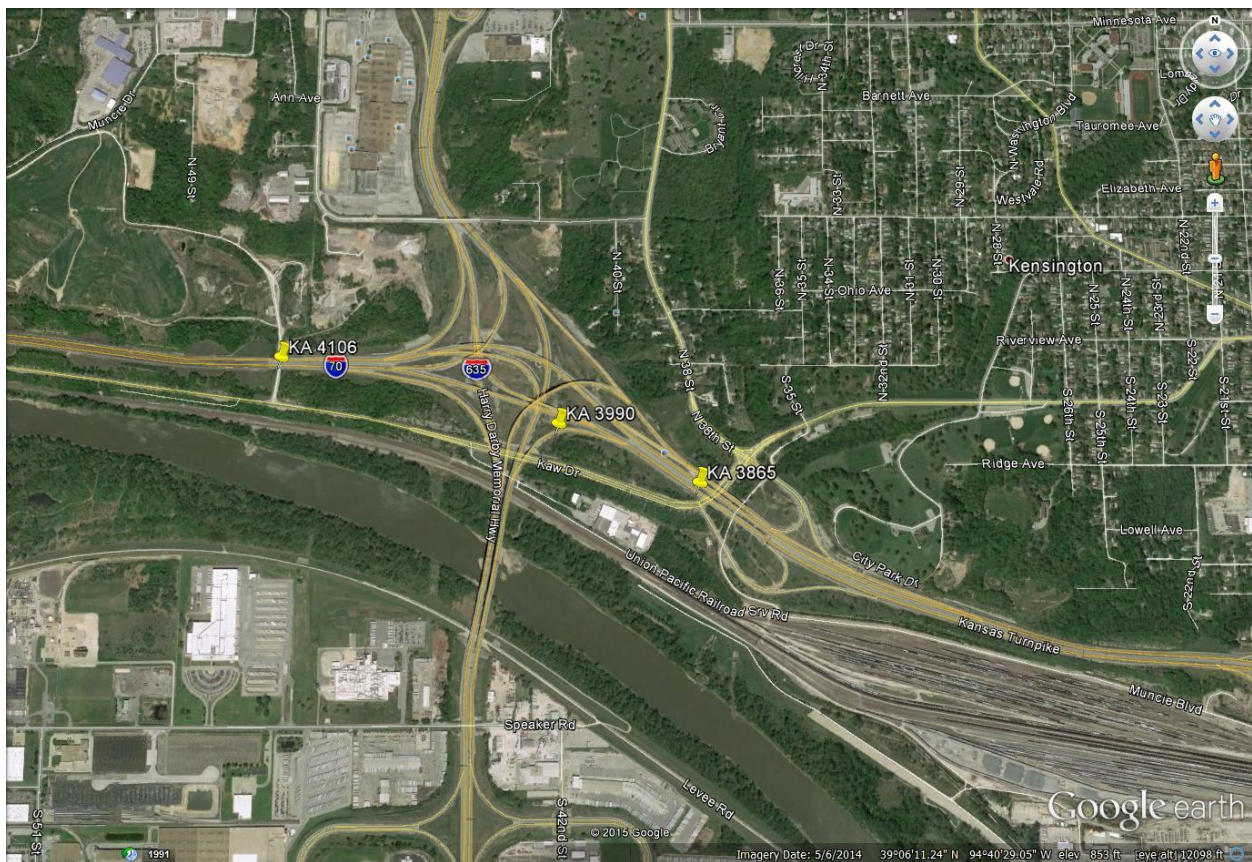
Mike King, Secretary

Sam Brownback, Governor

FOR IMMEDIATE RELEASE

March 18, 2015

News Contact: Kimberly Qualls, (785) 640-9340 or kqualls@ksdot.org
Amy Pope, (913) 721-2754 or amyp@ksdot.org



I-70 Multi-Bridge Repair Project to Begin in Wyandotte County

On **Wednesday, March 25**, weather permitting, a multi-bridge repair project will begin on eastbound and westbound I-70 in Kansas City, Kan. (Wyandotte County). Project work includes, complete replacement of the decks over the eastbound and

westbound I-70 bridges over Kaw Drive; joint repair work on southbound I-635 to eastbound I-70 ramp bridge; and mill, patch and overlay work on the eastbound I-70 bridge over Quarry Road. Work will take place during daylight hours (sunrise to sunset), Monday through Friday with some occasional Saturday work.

Beginning at **9:00 a.m. on Wednesday, March 25**, the following ramp closures will begin: northbound and southbound I-635 to eastbound I-70 and eastbound I-70 to Park Drive/Kaw Drive. Marked detours will be provided (see project handout link below for detour maps). The northbound and southbound I-635 to eastbound I-70 ramp closures will be in place, 24/7 round the clock, throughout the project duration. The eastbound I-70 to Park Drive/Kaw Drive ramp will reopen to traffic in July 2015.

At the **same time on Monday, March 25**, eastbound and westbound I-70 from just west of I-635 to just east of Kaw Drive will be reduced to two 11-foot lanes with no shoulders, 24/7 round the clock, throughout the project duration. There will be a 55 mph posted speed limit on I-70 through the work zone throughout the project duration.

Project work will be completed in several phases with varying traffic impacts. Additional phasing and project-related traffic closures will be sent out in advance under separate cover.

Project construction information, including general phasing, traffic impacts and marked detour route maps can be viewed at: [I-70 over Kaw Drive Multi-Bridge Construction Project Handout](#). Updated daily traffic information for this project and for the entire Kansas City Metro Area can be viewed at: www.ksdot.org/kcmetro/laneclose.asp

Drivers should expect delays and must allow extra time during their daily commutes. The Kansas Department of Transportation urges all motorists to be alert, obey the warning signs, and “Give ‘Em a Brake!” when approaching and driving through the project work zone.

Clarkson Construction (Kansas City, MO) is the primary contractor on this multi-bridge repair project with a total contract cost of \$8 million. **Project work is scheduled to be completed in December 2015, weather permitting.**

This project is funded by T-WORKS, the transportation program passed by the Kansas Legislature in May 2010. Find out more about these and other T-WORKS projects at: <http://kdotapp.ksdot.org/TWorks/>.

For more information on this project, please contact Kimberly Qualls, Northeast Kansas Public Affairs Manager at (785) 640-9340, or Amy Pope, Construction Engineer, Bonner Springs at (913) 721-2754. (KDOT Projects #70-105 KA-3865-01; #635-105 KA-3990-01; #70-105 KA-4106-01))

###

This information is available in alternative accessible formats. To obtain an alternative format, contact KDOT Office of Public Affairs, Eisenhower Building, 700 SW Harrison, 2nd Floor West, Topeka, Kan., 66603-3754, or (785) 296-3585 (Voice)/Hearing Impaired - 711.

Click below to connect to NE Kansas KDOT's Social Networks:

