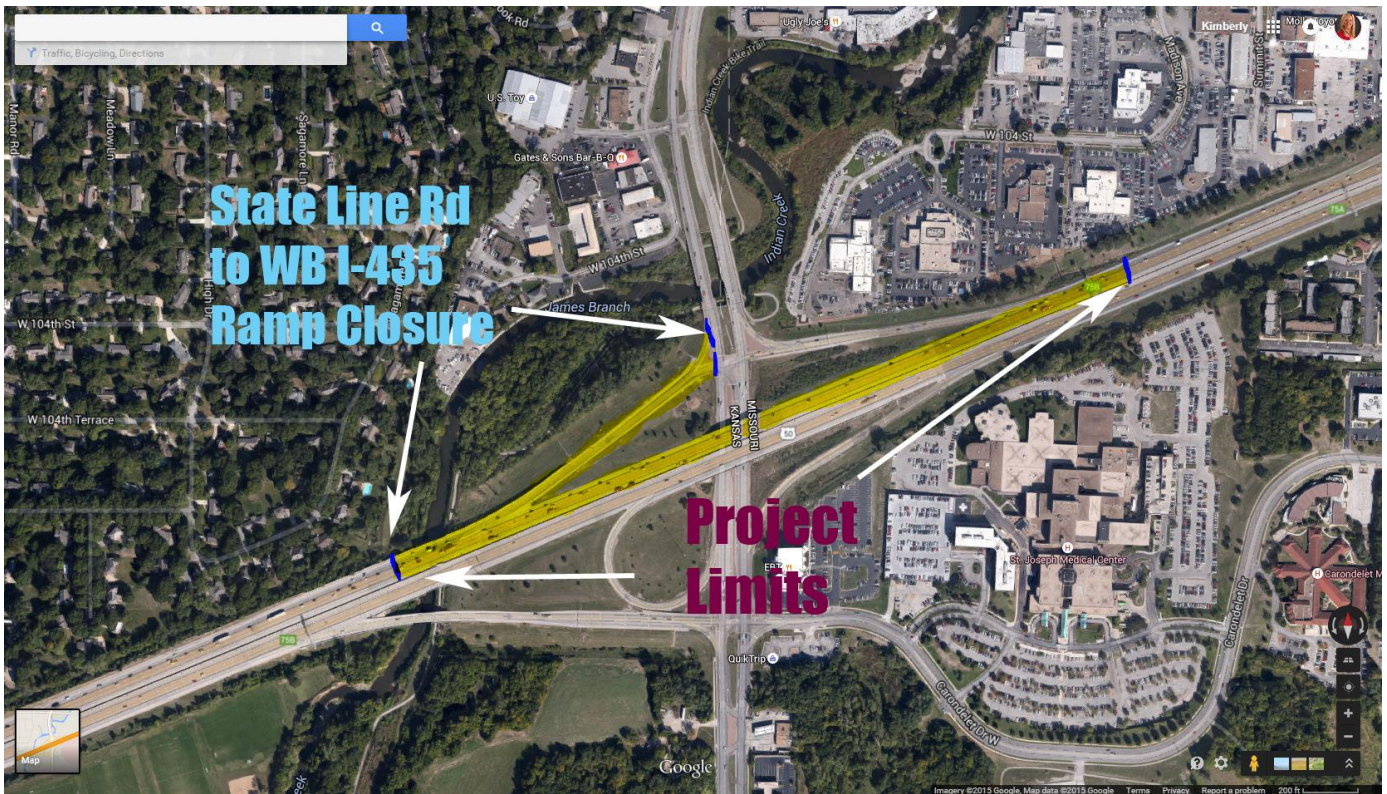


FOR IMMEDIATE RELEASE

June 9, 2015

News Contact: Kimberly Qualls, (785) 640-9340 or kqualls@ksdot.org
Joshua Welge, (913) 764-4525 or joshua@ksdot.org



Westbound I-435 over Indian Creek Bridge Repair Project to Begin in Johnson County

On **Monday, June 15**, a repair and resurfacing project will begin on the westbound I-435 Bridge over Indian Creek in Johnson County. The bridge carries both westbound I-435 and State Line Road ramp traffic over Indian Creek. Project work includes patching on the bridge deck followed by a concrete overlay. Work will take place during daylight hours, Monday through Friday.

Beginning at **9:00 a.m. on Monday, June 15**, westbound I-435 far right lane leading up to the Indian Creek bridge will be closed between 9:00 a.m. and 3:00 p.m. daily for two or three days for shoulder widening work on the State Line Road entrance ramp up to and on westbound I-435.

On **Sunday, June 21**, weather permitting, the State Line Road to westbound I-435 entrance ramp will be closed and will remain closed throughout the project duration. Also, westbound I-435 will be reduced to one open lane over the bridge this same day from 7:00 a.m. to 3:00 p.m. for set-up and preparation work.

Beginning on **Sunday evening, June 21**, westbound I-435 over the Indian Creek Bridge from the exit ramp to State Line Road to just past Indian Creek Bridge will be reduced to three open lanes throughout the project duration for phase one construction work. During phase one construction, westbound I-435 traffic will be shifted to the right lanes over the bridge. Then part way through the project, westbound I-435 traffic will be shifted to the left three lanes for phase two work. **SPECIAL NOTE:** In case of inclement weather the Sunday lane and ramp closures will be pushed back a day to Saturday, June 20. Advance separate notification will be sent out should the dates/times change due to inclement weather.

State Line Road ramp traffic will follow a marked detour west on 103rd Street and College Boulevard to Roe Avenue to access westbound I-435. See marked detour map below.

Traffic will be directed through the project work zone via signage, cones and concrete barrier. There will be a 55 mph posted speed limit and an 11-foot lane width restriction through the project work zone throughout the project duration.

Advance message boards will alert drivers to the lane closures. Drivers should expect major delays during the peak hours and should allow extra time for their daily commutes.

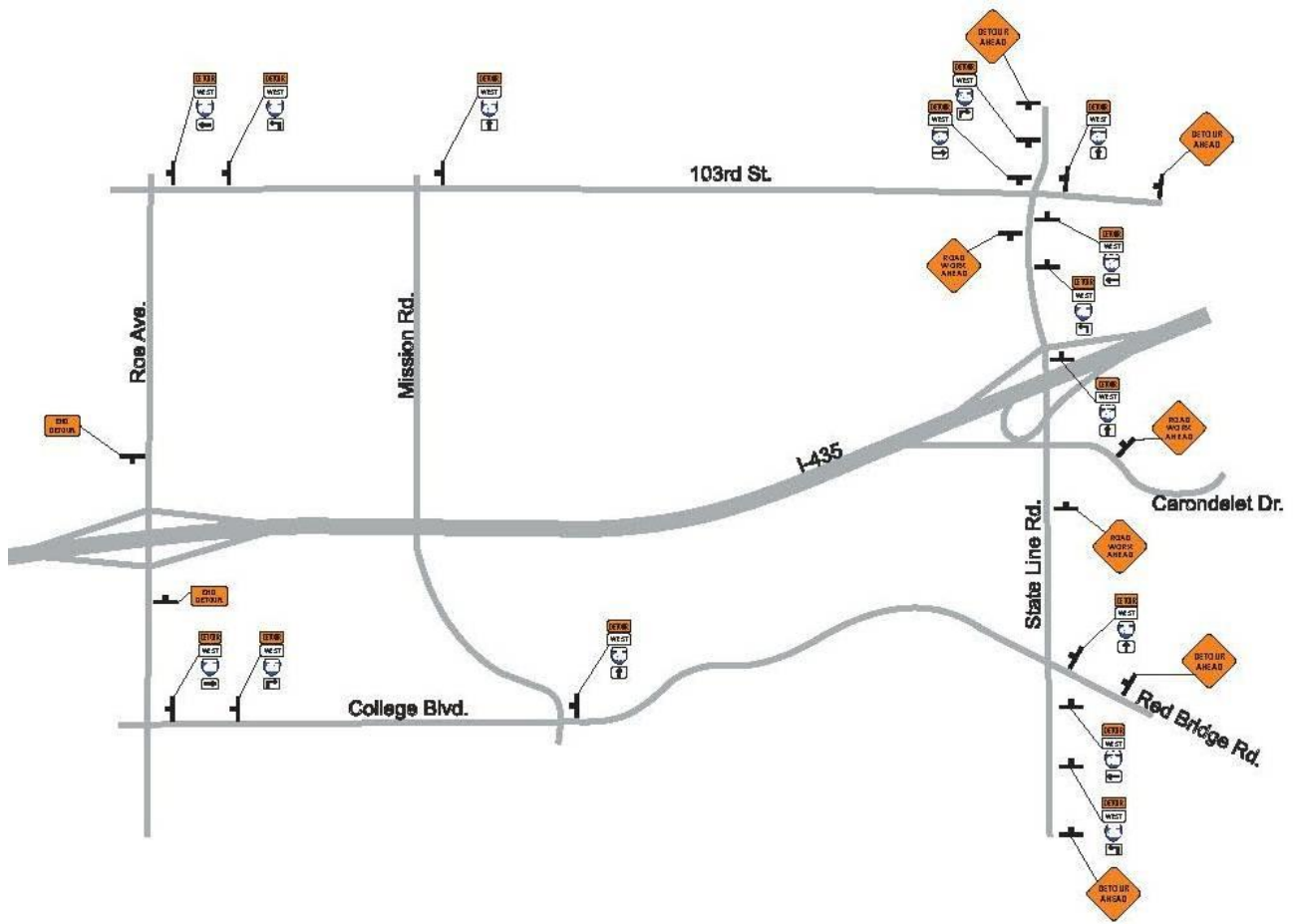
Updated daily traffic information for this project and for the entire Kansas City Metro area can be viewed online at: www.ksdot.org/kcmetro/laneclose.asp.

The Kansas Department of Transportation urges all motorists to be alert, obey the warning signs, and "Give 'Em a Brake!" when approaching and driving through the project work zone.

Comanche Construction (Shawnee Mission, KS) is the primary contractor on this \$593,936 bridge repair and resurfacing project. **The overall project is scheduled to be completed in early September 2015, weather permitting.**

This project is funded by T-WORKS, the transportation program passed by the Kansas Legislature in May 2010. Find out more about this and other T-WORKS projects at: <http://kdotapp.ksdot.org/TWorks/>.

For more information on this project, please contact Kimberly Qualls, Northeast Kansas Public Affairs Manager, at (785) 640-9340, or Joshua Welge, Field Engineering Administrator, at (913) 764-4525. (KDOT Project #435-46 KA-3969-01)



###

This information is available in alternative accessible formats. To obtain an alternative format, contact KDOT Office of Public Affairs, Eisenhower Building, 700 SW Harrison, 2nd Floor West, Topeka, Kan., 66603-3754, or (785) 296-3585 (Voice)/Hearing Impaired - 711.

Click below to connect to KDOT's Social Networks:

