

Eisenhower State Office Building  
700 SW Harrison  
Topeka, KS 66603



phone: 785-296-3585  
fax: 785-296-0287  
[www.ksdot.org](http://www.ksdot.org)

Richard Carlson, Secretary

Sam Brownback, Governor

## IMMEDIATE RELEASE

June 12, 2017

### For more information:

Kim Stich  
785.296.3585  
[KDOT.Media@ks.gov](mailto:KDOT.Media@ks.gov)

## U.S. 24 overlay work starts June 14 in Leavenworth, Douglas counties

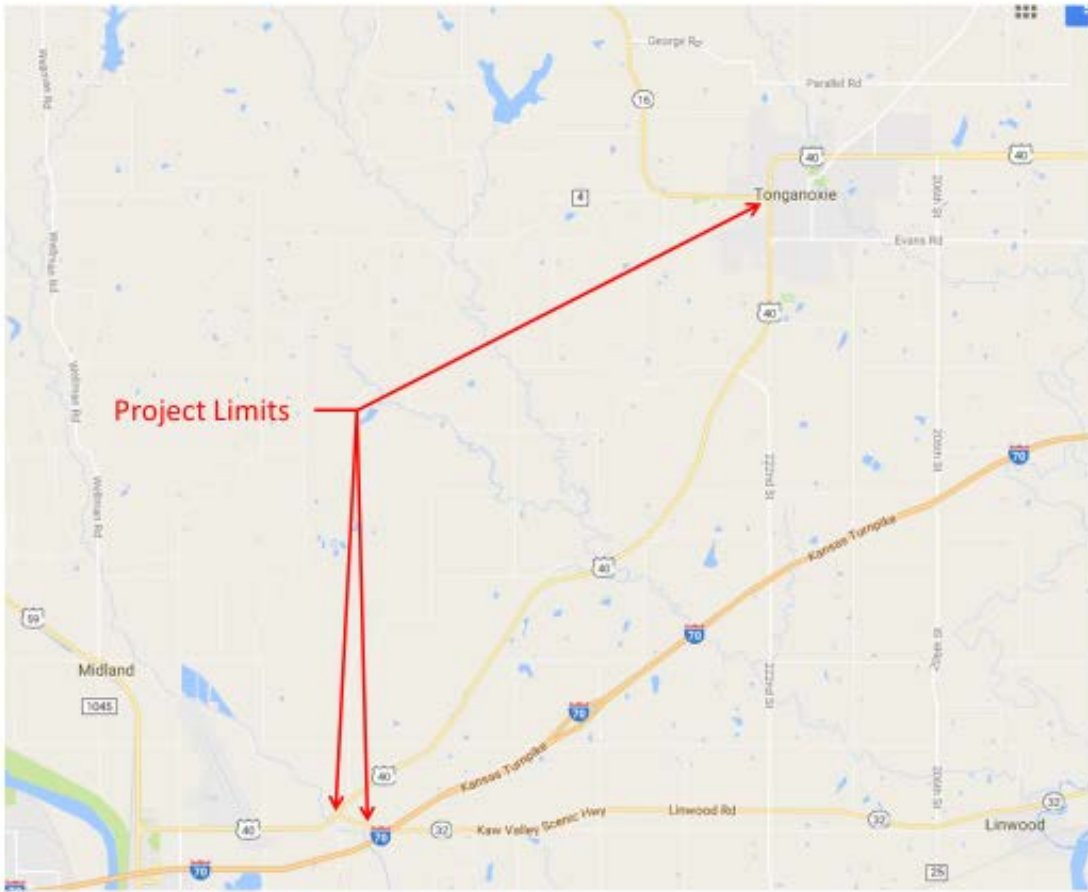
The Kansas Department of Transportation will begin a mill and overlay project on U.S. 24 in Leavenworth and Douglas counties on Wednesday, June 14, that extends from K-16 in Tonganoxie south 10 miles to K-32. About .4 mile of K-32 from U.S. 24 east to the new pavement on the I-70 bridge is also included.

Work will require a lane closure with traffic following a pilot car through the construction. The lane is also reduced to 12 feet in width. The project will take place on weekdays, typically from sunrise to sunset, with possible Saturday daytime work. **Motorists should expect delays of up to 15 minutes** – please allow extra time in travel schedules.

The project is expected to be completed late August, weather permitting. Bettis Asphalt and Construction, Inc., of Topeka is the contractor on the \$900,000 project.

Motorists are asked to use extra caution in the work zone area. A view of the project area is below.

Updated daily traffic information for this project and for the entire Kansas City Metro Area can be viewed at: [www.ksdot.org/kcmetro/laneclose.asp](http://www.ksdot.org/kcmetro/laneclose.asp).



###

This information can be made available in alternative accessible formats upon request. For information about obtaining an alternative format, contact the Office of Public Affairs, 700 SW Harrison St., 2<sup>nd</sup> Fl West, Topeka, KS 66603-3754 or phone 785-296-3585 (Voice)/Hearing Impaired – 711.

Click below to connect to KDOT's Social Networks:



