

Eisenhower State Office Building
700 SW Harrison
Topeka, KS 66603



phone: 785-296-3585
fax: 785-368-7415
www.ksdot.org

Julie Lorenz, Secretary

Laura Kelly, Governor

IMMEDIATE RELEASE

July 12, 2019

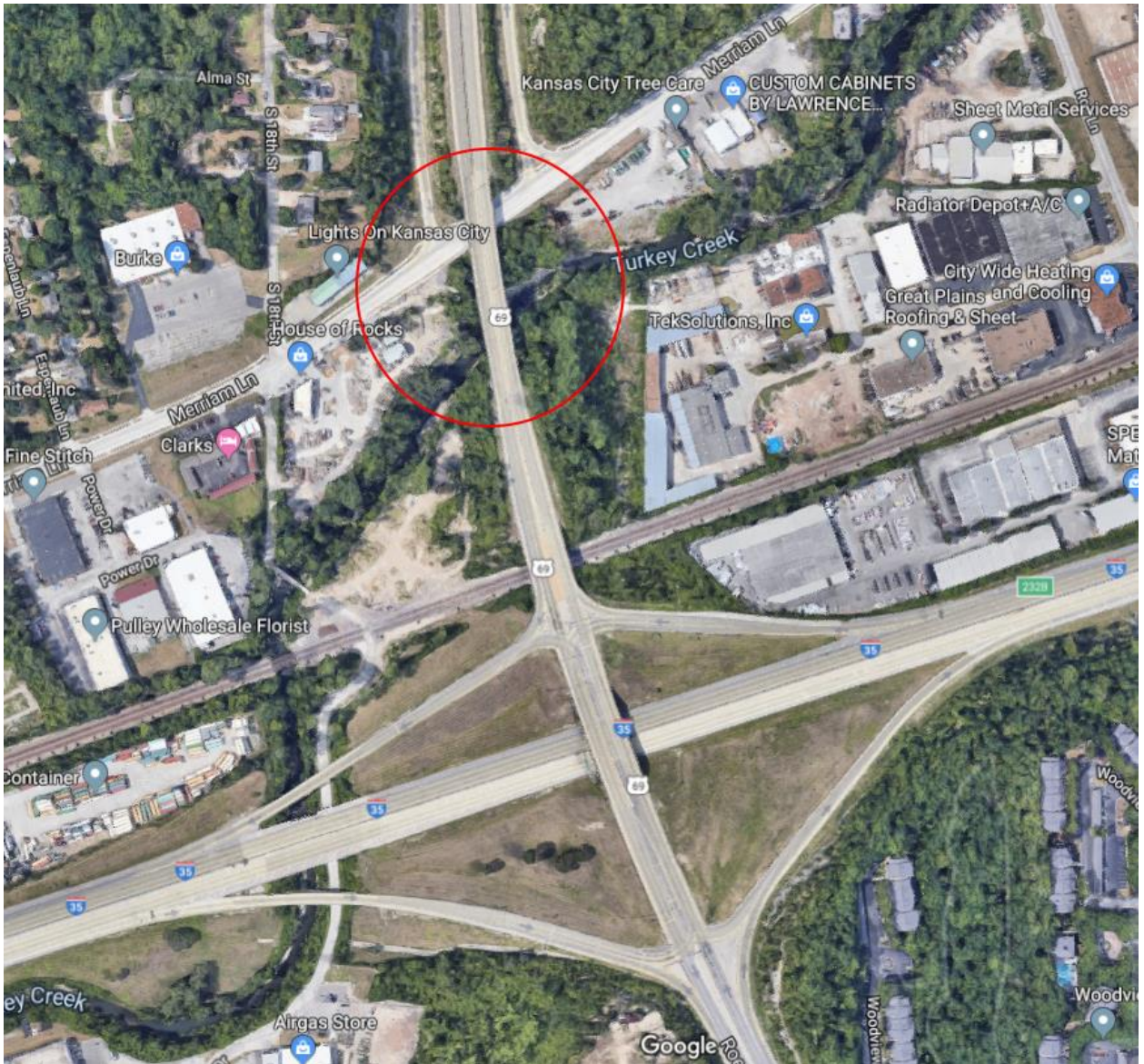
For more information:

Mike Quizon
785.640.9340
michael.quizon@ks.gov

KDOT to repair U.S.69 bridge over Merriam Lane and Turkey Creek in Wyandotte County

Beginning Monday, July 15, Kansas Department of Transportation will perform bridge repairs on U.S.69 over Merriam Lane and Turkey Creek in Wyandotte County, including replacing approach pavement, replacing expansion joints and repairing and replacing bearings. Northbound and southbound U.S.69 will be reduced to one lane in each direction from I-35 to Merriam Lane through the duration of the project. The project is estimated to be completed by January 2020.

The bridge was originally constructed in 1959. This stretch of US-69 is one of the busiest highways in the Kansas City Metro with an average daily traffic of more than 70,000 vehicles. Comanche Construction Inc. of Shawnee is the primary contractor on the \$600,000 project.



###

This information can be made available in alternative accessible formats upon request. For information about obtaining an alternative format, contact the KDOT Office of Public Affairs, 700 SW Harrison St., 2nd Fl West, Topeka, KS 66603-3754 or phone 785-296-3585 (Voice)/Hearing Impaired – 711.

Click below to connect to KDOT's Social Networks:

