

Kansas City Metro Office
1290 S. Enterprise
Olathe, KS 66061-5355



phone: 913-942-3100
fax: 913-782-5914
www.ksdot.org

Julie Lorenz, Secretary

Laura Kelly, Governor

IMMEDIATE RELEASE

September 5, 2019

For more information:

Mike Quizon
785.640.9340
michael.quizon@ks.gov

Lane closures scheduled for I-35 at U.S. 69

The Kansas Department of Transportation, as part of the project to repair the U.S. 69 bridge over I-35 in Lenexa, will be cutting out bridge deck to replace concrete as well as access and strengthen support structures starting tonight, Thursday, Sep. 5. As a precaution for falling debris, the following lane and ramp closures will be in place during this phase of the project.

Thursday night

- Southbound I-35 right two lanes will be closed from 67th to 87th streets from Thursday (9/5) 8 p.m. to Friday (9/6) 5 a.m.

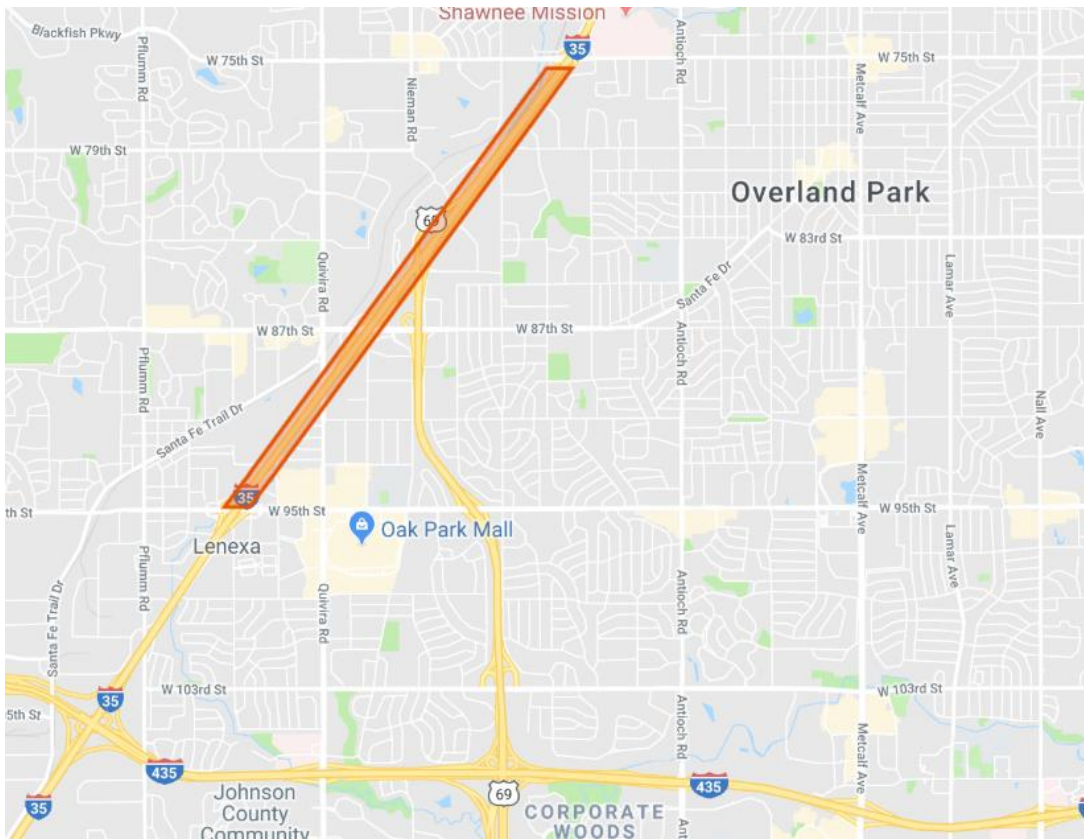
Friday through Monday

- Southbound I-35 two lanes will be closed from 67th to 87th streets from Friday (9/6) 8 p.m. to Monday (9/9) 5 a.m.
- Northbound I-35 left two lanes closed from 95th to 75th streets from Friday (9/6) 8 p.m. to Monday (9/9) 5 a.m.
- Ramp from 87th street to northbound I-35 will be closed from Friday (9/6) 8 p.m. to Monday (9/9) 5 a.m.

These closures will result in southbound I-35 being reduced to one lane Thursday night. From Friday night through Monday morning, both directions of I-35 will be reduced to one lane and the northbound on-ramp from 87th street will be closed.

Motorists should plan ahead and allow for extra time. Northbound I-35 traffic should use I-435 to US-69 to I-35 as an alternate route. Message boards will

advise 87th street ramp closure traffic to use Quivira for westbound traffic and Lenexa Drive for eastbound traffic.



For more on the U.S. 69 bridge project:

<http://www.ksdot.org/bureaus/kcMetro/projectus69atl35.asp>

###

This information can be made available in alternative accessible formats upon request. For information about obtaining an alternative format, contact the KDOT Office of Public Affairs, 700 SW Harrison St., 2nd Fl West, Topeka, KS 66603-3754 or phone 785-296-3585 (Voice)/Hearing Impaired – 711.

Click below to connect to KDOT's Social Networks:

