

Kansas City Metro Office
1290 S. Enterprise
Olathe, KS 66061-5355



phone: 913-942-3100
fax: 913-782-5914
www.ksdot.org

Julie Lorenz, Secretary

Laura Kelly, Governor

An update on KC Metro highway projects **Week of April 12, 2021**
Updated April 13

Contact: Kim Stich, Kim.Stich@ks.gov

KDOT: www.ksdot.org

KanDrive: www.KanDrive.org

NE Kansas KDOT: [Kansas City Metro releases](#)

Facebook: @NEKansasKDOT

[Kansas City Metro Projects List](#)

Twitter: @KansasCityKDOT

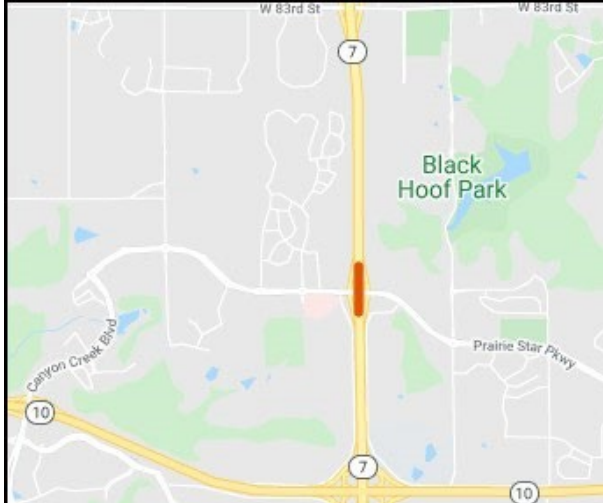
Nextdoor: Kansas Department of Transportation – District 1

JOHNSON COUNTY

KDOT maintenance:

- **US-69 (northbound 18th Street) – April 14 (EXTENDED)**
Guardrail repairs will be extended on 18th Street NB at Merriam Lane to 4/14, 9:00 AM – 3:00 PM.
- **K-10 eastbound – April 14 (NEW)**
Left lane will be closed on eastbound K-10 from Cedar Niles Road to Creek Parkway for guardrail repair in the median.
- **K-7 northbound – April 14 (NEW)**
Left lane will be closed on northbound K-7 from Harold St to 119th Street for guardrail repair in the median.

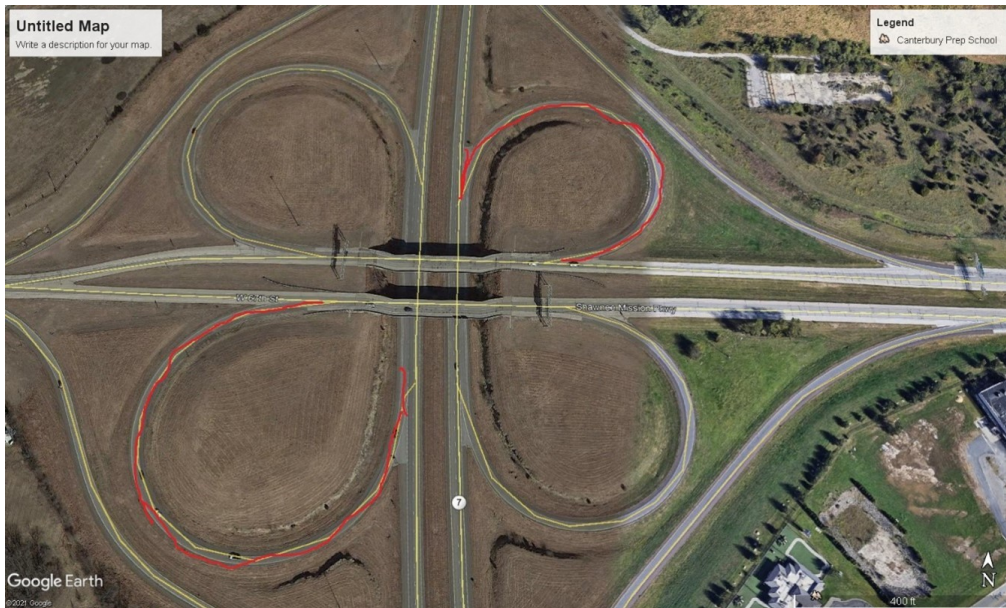
KDOT construction projects affecting traffic:



1. K-7, 95th Street/Prairie Star Parkway bridge repair begins April 19. Lane reductions will be involved. See news release on project for more details. **Projected expected to be completed mid-May.** See map at left.

2. Bridge deck repair at 67th Street/Shawnee Mission Parkway over K-7 in Johnson County, April 12 to September - NEW

- The project includes concrete patching, overlay and expansion joints. The expected completion of the project is mid-September. Work will occur 7 a.m. to 5 p.m., Monday to Friday and Saturdays as needed. **Please be aware that the southbound K-7 to eastbound 67th Street ramp and the northbound K-7 to westbound 67th Street ramp will be closed for the duration of the project.** All other ramps will remain open.



- 7. US-56 (Shawnee Mission Parkway) – April 12-26 (NEW) - Eastbound will have the right lane closed from 55th St. to Falmouth Rd. from 9 AM to 5 PM daily for sidewalk reconstruction.**
- 8. K-7 at Old US 56, City of Olathe project –reconfiguring the intersection at Lone Elm/Old US 56.**

Old US 56 closed, March 1 to June 1.

Old 56 will be closed on both the east and west sides of Lone Elm/Parker. Traffic will still be able to drive north/south through the intersection, but all turning movements and east/west travel will be restricted during the closure. (See detour map. NEW (ONGOING))

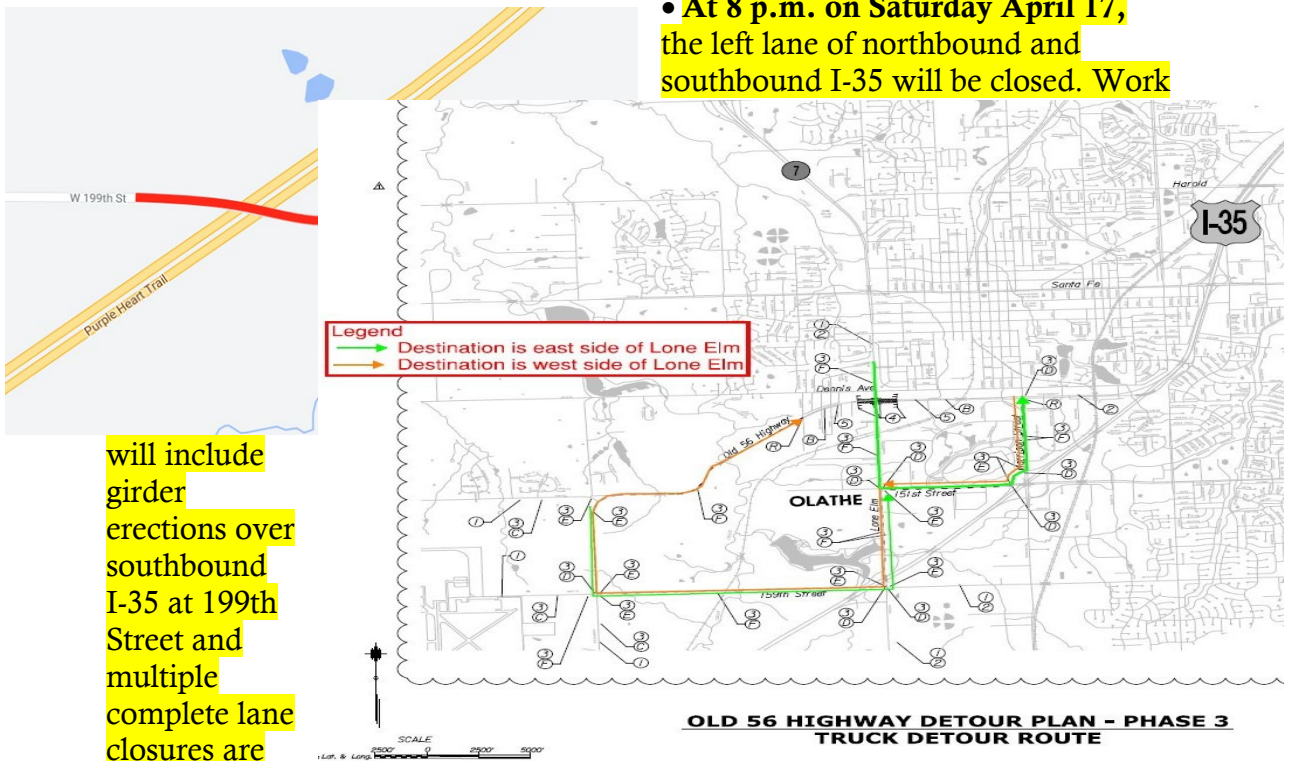
9. 199th St and Waverly Road - (ONGOING)

The 199th Street overpass over I-35 between Homestead Lane and Gardner Road is closed for the replacement of the overpass bridge. Waverly Road access to 199th Street from 207th Street is also closed. This project is expected to be completed by October 2021.

CLOSURE RESCHEDULED AS PART OF THIS PROJECT FOR APRIL 17-18

- Lane closures to occur on southbound I-35 at 199th Street, between mile marker 205 and mile marker 207, from 10 p.m. Friday, April 16 to 8 a.m. Saturday, April 17, weather permitting.

• At 8 p.m. on Saturday April 17, the left lane of northbound and southbound I-35 will be closed. Work



will include girder erections over southbound I-35 at 199th Street and multiple complete lane closures are

expected throughout the night and may last up to 15 minutes each. Work will finish by 8 a.m. Sunday.

- Drivers should expect delays and are encouraged to find alternative routes.

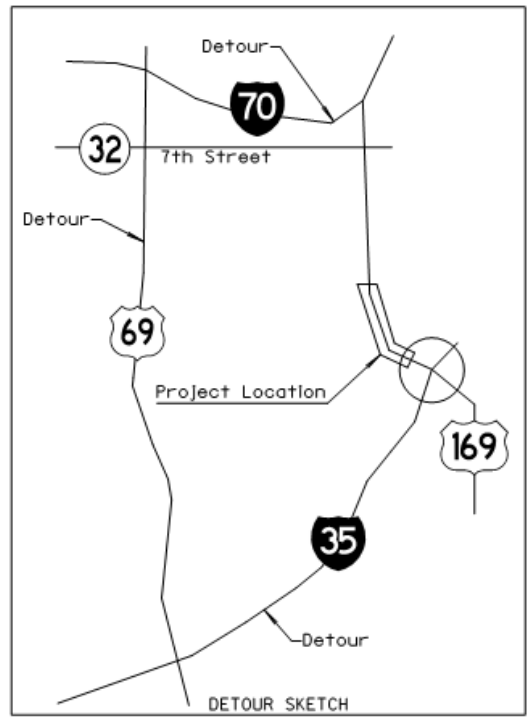
WYANDOTTE COUNTY

KDOT maintenance:

- **Westbound I-70 exit ramp to Fairfax Trafficway, April 14-17, NEW**
 - I-70 exit ramp will be closed April 14-16 from 9 a.m. to 3 p.m. and then on Saturday, April 17, from 7 a.m. to 5 p.m. for concrete barrier wall staining.
- **Southbound I-435, from I-70 to the Kansas River, April 14, NEW**
I-435 lane closure for patching from 9 a.m. to 3 p.m.
- **Eastbound and westbound K-32, from K-7 to Turner Diagonal, April 14, NEW**
Alternating lane closures on K-32 for patching from 9 a.m. to 3 p.m.

KDOT construction projects affecting traffic:

1. **Structural steel painting and concrete barrier wall staining to finish work on the Lewis & Clark Viaduct, lane closure, westbound I-70 over the Kansas River, April 12 to early June. NEW**
 - Westbound I-70 reduced to 2 lanes over the Kansas River. Expected completion of the project is early June.
2. **U.S. 169/7th St./Herman Dillon bridge replacement project. Northbound U.S. 169/7th St. is closed, southbound over the Kansas River began April 12. NEW (ONGOING)**
 - Work will include truss and expansion joint repair on the Kansas River bridge, primarily on the northbound side.
 - Work will occur during daytime hours, Monday to Friday, and completion is expected in mid-June 2021. Weekend and night work may take place to close the bridge and for placement of traffic control equipment and detour signs.



3. **WB I-70 exit ramp to I-635, overhead truss sign work. NEW**
 - Work to remove and replace an overhead truss sign on the westbound I-70 exit ramp to I-635 began March 22. Most of the work will not affect traffic. When the sign or truss is being placed, the highway will be reduced to one lane that day in the work area. Work should be finished by the end of April.

4. **Unified Government project – for roadway improvements, includes grading, surfacing and storm sewer work. Two lanes of traffic will be reduced to one 11 ft. wide lane of thru traffic using a flagging operation, Leavenworth Road/K-5 from 78th St. to 63rd St. Work will occur during daylight hours, Feb. 15 to Dec. 10. NEW (ONGOING)**

5. **Bike/pedestrian path project in Kansas City – NEW (ONGOING)**
Strong Avenue from 42nd Street to 24th Street, along 24th from Strong Avenue to Metropolitan Avenue and along Metropolitan Avenue from 24th to 12th Street.

Work will occur 7 a.m. to 6 p.m., Monday to Friday and Saturdays as necessary, **project completion expected end of May.**

Curb and sidewalk construction will begin on the south side of Strong Avenue between 36th St. and 25th St., where on-street parking will not be allowed, sidewalk closed and pedestrians detoured to the north side of the road. Once the south side is complete, construction will begin on the north side of Strong Ave.

Parking will not be allowed in the areas designated as no parking.

JEFFERSON COUNTY

KDOT maintenance:

KDOT construction project affecting traffic:

LEAVENWORTH COUNTY

KDOT maintenance:

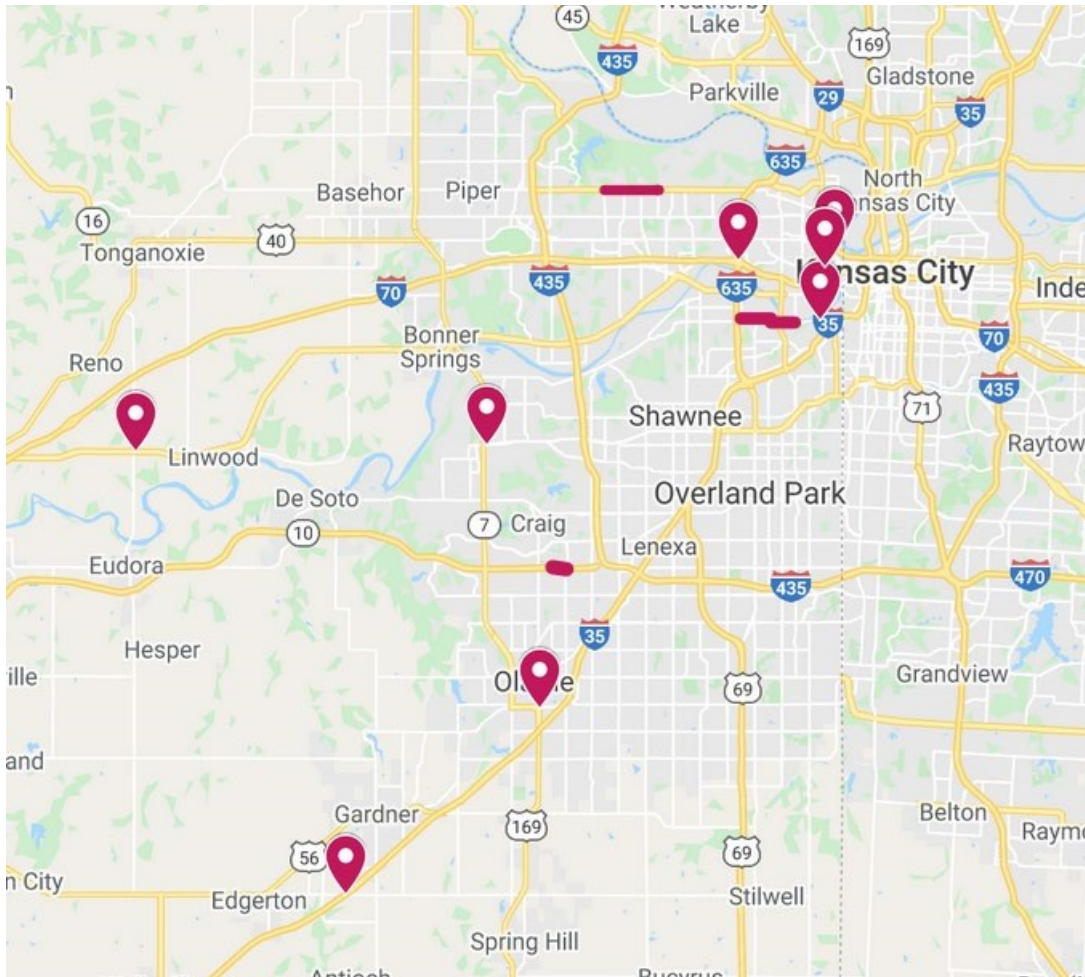
KDOT construction project affecting traffic:

- **Intersection improvements at K-32 and 222nd Street, west of Linwood. NEW (ONGOING)** From April 5 to end of June, improvements will include grading and asphalt surfacing for new lanes. Work will occur 7 a.m. to 5 p.m., Monday to Friday and Saturdays, as needed. The project is expected to be completed by the end of June.

Traffic will be carried through the existing lanes for the duration of the project, using a flagging and pilot car operation. Signage and traffic cones will also be used. Drivers should expect delays of up to 15 minutes and may want to find an alternative route.

For additional road condition details, check KDOT's updated traveler information website, www.Kandrive.org. KDOT urges all motorists to be alert and obey the warning signs when approaching and driving through a work zone. Drive safely and always wear your seat belt.

Unsubscribe from this email list by emailing kelly.kultala@ks.gov (put Unsubscribe in the Subject line).



###

This information can be made available in alternative accessible formats upon request. For information about obtaining an alternative format, contact the KDOT Office of Public Affairs, 700 SW Harrison St., 2nd Fl West, Topeka, KS 66603-3754 or phone 785-296-3585 (Voice)/Hearing Impaired – 711.

Click below to connect to KDOT's Social Networks:

