

## An update on KC Metro highway projects

**Week of June 28, 2021**  
**Updated July 2**

Contact: Delaney Tholen, [Delaney.Tholen@ks.gov](mailto:Delaney.Tholen@ks.gov)

NE Kansas KDOT: [Kansas City Metro releases](#) [Kansas City Metro Projects List](#)

Facebook: [@NEKansasKDOT](#) Twitter: [@KansasCityKDOT](#)

Nextdoor: [Kansas Department of Transportation – District 1](#) KDOT: [www.ksdot.org](http://www.ksdot.org)

For additional road condition details, check KDOT's updated traveler information website, [www.KanDrive.org](http://www.KanDrive.org).

### JOHNSON COUNTY

*KDOT short-term closures:*

**NB and SB I-35, 159<sup>th</sup> and Lone Elm off ramps, July 3-4, NEW.** Due to the Kansas City Air Show at the New Century Airport in Gardner, traffic may be impacted. Other ramps in Gardner area may also be closed at direction of Kansas Highway Patrol (KHP) if congestion issues arise. Travelers are encouraged to be cautious and anticipate potential additional traffic associated with Air Show. Closures will take place approximately 9 a.m. to 5 p.m. at direction of KHP.

**NB and SB U.S. 169, from 151<sup>st</sup> St. to 175<sup>th</sup> St., and 167<sup>th</sup> St. at U.S. 169, July 6, (NEW – UPDATED).** Mobile lane closures for milling and asphalt overlay from 7 p.m. to 6 a.m.

**EB K-10, from Kill Creek to Mill Creek, July 7, NEW.** Various lane closures for hubrail repairs from 9 a.m. to 3:30 p.m.

**SB I-35, Gardner Rd. ramp, July 7-8, NEW.** Ramp closed for patching in intersection from 9 a.m. to 5:30 p.m. Motorists can access Locust St. exit or follow posted detour to 207<sup>th</sup> St.

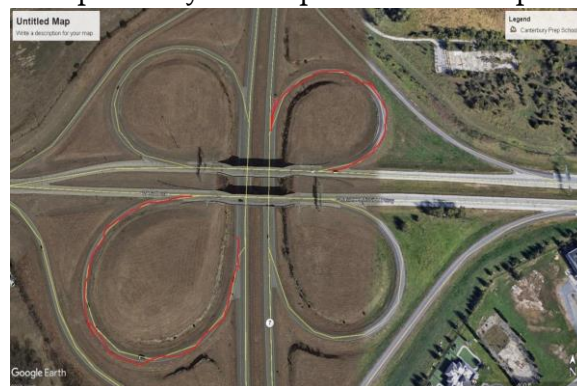
**SB I-35 at 119<sup>th</sup> St., POSTPONED/NEW DATE TBD, (NEW – UPDATED).** Traffic reduced to one lane for bridge demolition from 11 p.m. to 4 a.m.

---

*KDOT construction projects affecting traffic:*

- 1. NB U.S. 69/179<sup>th</sup> St. to 191<sup>st</sup> St., start date June 14, (ONGOING – UPDATED).** NB U.S. 69 will be reduced to one lane for bridge maintenance. Work will occur 7 a.m. to 5:30 p.m., Monday through Friday, with work on Saturday as needed. Project completion expected by mid-November.
- 2. City of Olathe project. I-35/119<sup>th</sup> St. bridge, start date June 1, (ONGOING – UPDATED).** 119<sup>th</sup> St. bridge will be closed beginning June 1. I-35 will have daily lane closures. Right turns onto 119<sup>th</sup> St. from I-35 and right turns onto I-35 from 119<sup>th</sup> St. will be allowed. **Please see “Short-Term Closures” for applicable daily I-35 closure info.** Project completion expected by September.

3. **City of Gardner project. 191<sup>st</sup> to Gardner Rd., (ONGOING - UPDATED).** Project is addressing potholes on bridge and concrete surface work in preparation for Locust St. project. Bridge over I-35 will be reduced to a single lane that will only permit SB traffic. **Please see “Short-Term Closures” for applicable daily closure info.** When complete, existing intersection at Gardner Rd. and 191<sup>st</sup> St. will be closed. With addition of Locust St., a north/south street parallel to Gardner Rd., and access to Gardner Rd. will be established at 188<sup>th</sup> St. Work will occur Monday through Friday during daylight hours, with work on Saturday as needed. Project phase completion expected by early July.
  
4. **EB and WB K-10 at Lexington Ave. bridge reconstruction, start date May 24 (ONGOING-UPDATED).** A crossover, or temporary asphalt road, will be constructed in the median to redirect traffic onto WB K-10. Once traffic is redirected, the EB K-10 bridge deck installation will begin. **EB and WB K-10, near Lexington Ave., will be reduced to one lane of traffic in each direction, and EB K-10 on-ramp from Lexington Ave. will be closed.** Work will occur Monday through Friday during daylight hours, with work on Saturday as needed. Project completion expected by late November.
  
5. **U.S. 56 pavement maintenance project, Moonlight Rd. to I-35, start date May 8, (revised work times and closures) (ONGOING).** Work will include concrete pavement patching and asphalt overlay. EB and WB traffic will be reduced to one lane during hours of work. All lanes of traffic will be open when work is not being performed. Work will occur 7 p.m. to 6 a.m., Wednesday to Friday, and 7 p.m. Saturday to 6 a.m. Monday. **The off-ramp from SB New Century Pkwy. to WB U.S. 56 will also be closed: traffic will be able to access U.S. 56 using Industrial Bypass.** Off-ramp will be closed from 7 p.m. Wednesday to 6 a.m. Thursday. Project completion expected by mid-July.
  
6. **City of Shawnee project. NB and SB K-7 at 43<sup>rd</sup> St., start date April 29 (ONGOING).** This section of K-7 will be reduced to one lane for intersection reconstruction. Project completion expected by mid-August.
  
7. **Bridge deck maintenance at 67th St./Shawnee Mission Pkwy. over K-7, start date April 12 (ONGOING - UPDATED).** Project includes concrete patching, overlay and expansion joints. **Please be aware that SB K-7 to EB 67<sup>th</sup> St. ramp and NB K-7 to WB 67<sup>th</sup> St. ramp will be closed for duration of project.** All other ramps will remain open. EB and WB U.S. 56 will be reduced to one lane during hours of work. Work will occur 7 a.m. to 5 p.m., Monday to Friday and Saturdays as needed. Project completion expected by mid-September. See map below:



8. **199<sup>th</sup> St. overpass and Waverly Rd., NB and SB I-35 (ONGOING - UPDATED).** 199<sup>th</sup> St. over I-35 closed between Homestead Ln. and Gardner Rd. for replacement of overpass bridge. Waverly Rd. access to 199<sup>th</sup> St. from 207<sup>th</sup> St. also closed. **I-35 will have intermittent daily lane closures.** Project completion expected by October.

---

## **WYANDOTTE COUNTY**

*KDOT short-term closures:*

- EB I-70 at 7<sup>th</sup> St., July 6, (ONGOING - UPDATED).** Alternating lane closures to set barrier wall from 9 a.m. to 3:30 p.m., weather permitting.

---

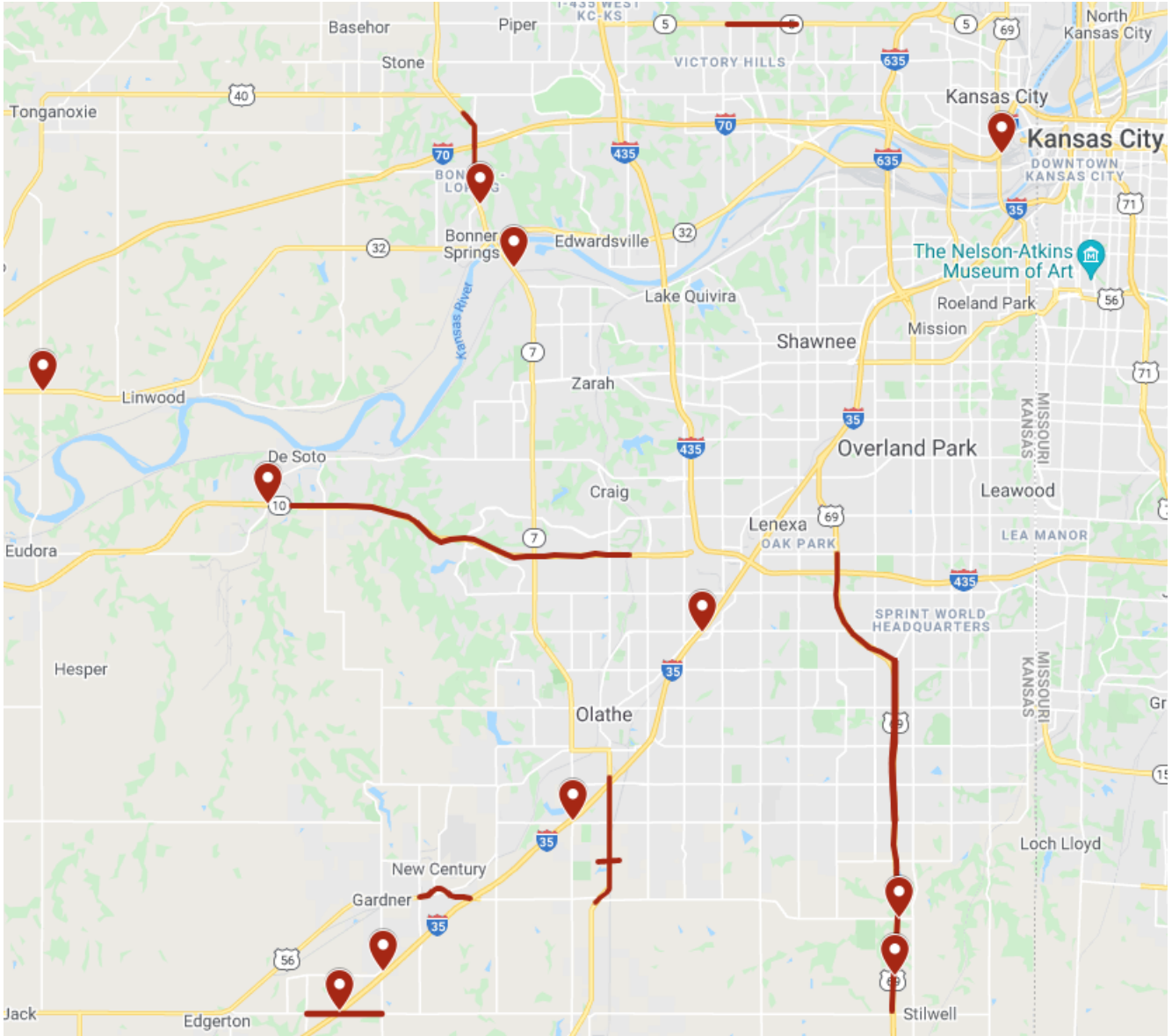
*KDOT construction projects affecting traffic:*

1. **U.S. 169 (7<sup>th</sup> St.)/I-70, start date June 16, (ONGOING - UPDATED).** WB I-70 to SB U.S. 169 (7<sup>th</sup> St.) exit ramp will be closed; U.S. 169 (7<sup>th</sup> St.) traffic will be reduced from two lanes to one lane in each direction for bridge maintenance. Ramp closure and lane reduction will remain for duration of project. **Traffic wanting to utilize WB I-70 to SB U.S. 169 (7<sup>th</sup> St.) exit ramp will be detoured to 18<sup>th</sup> St. exit and directed back to SB U.S. 169 (7<sup>th</sup> St.) on EB I-70.** Detour will be signed. Work will occur 7 a.m. to 3:30 p.m., Monday to Friday, and Saturdays as needed. Project completion expected by mid-October.
2. **K-7 from Kansas River to Elizabeth Ave., start date June 11, (ONGOING - UPDATED).** Single lane closures will occur on K-7, and ramps will be closed as necessary to allow for paving operations, including asphalt pavement patching, placing treatment on shoulders, and pavement markings. **Work will occur Sunday to Friday, 7 p.m. to 6 a.m., with Friday nights as needed, beginning June 19 (change in work hours).** Project will continue through mid-August.  
**TRAFFIC ADVISORY: This mill and overlay project is adjacent to a City of Shawnee ongoing intersection reconstruction project at K-7 and 43<sup>rd</sup> Street. Traffic delays are expected and drivers are encouraged to find alternate routes.**
3. **Unified Government project. Leavenworth Rd./K-5 from 78<sup>th</sup> St. to 63<sup>rd</sup> St., start date February 15 (ONGOING).** Two lanes of traffic reduced to one 11 ft. wide lane of thru traffic using flagging operation. Roadway improvements include grading, surfacing and storm sewer work. Work will occur during daylight hours; project completion expected by December 10.
4. **Intersection improvements at K-32 and 222nd St., west of Linwood, start date April 5 (ONGOING).** Improvements include grading and asphalt surfacing for new lanes. **Traffic will be carried through existing lanes for duration of project, using flagging and pilot car operation.** Signage and traffic cones will also be used. Drivers should expect delays of up to 15 minutes and may want to find an alternative route. Work will occur 7 a.m. to 5 p.m., Monday to Friday and Saturdays, as needed. Project completion expected by mid-August.

*KDOT urges all motorists to be alert and obey the warning signs when approaching and driving through a work zone. Drive safely and always wear your seat belt. Unsubscribe from this email list by emailing [delaney.tholen@ks.gov](mailto:delaney.tholen@ks.gov) (please include Unsubscribe in the Subject line).*

---

## CURRENT KC METRO HIGHWAY KDOT PROJECT MAP



###

This information can be made available in alternative accessible formats upon request. For information about obtaining an alternative format, contact the KDOT Office of Public Affairs, 700 SW Harrison St., 2<sup>nd</sup> Fl. West, Topeka, KS 66603-3754 or phone 785-296-3585 (Voice) / 7-1-1 (Hearing Impaired).

**Click below to connect to KDOT's Social Networks:**

