

Kansas City Metro Office
1290 S. Enterprise
Olathe, KS 66061-5355



phone: 913-942-3100
fax: 913-782-5914
www.ksdot.org

Julie Lorenz, Secretary

Laura Kelly, Governor

IMMEDIATE RELEASE

July 9, 2021

For more information:

Delaney Tholen

785-817-9365

delaney.tholen@ks.gov

K-5 road closure to begin today in Wyandotte County

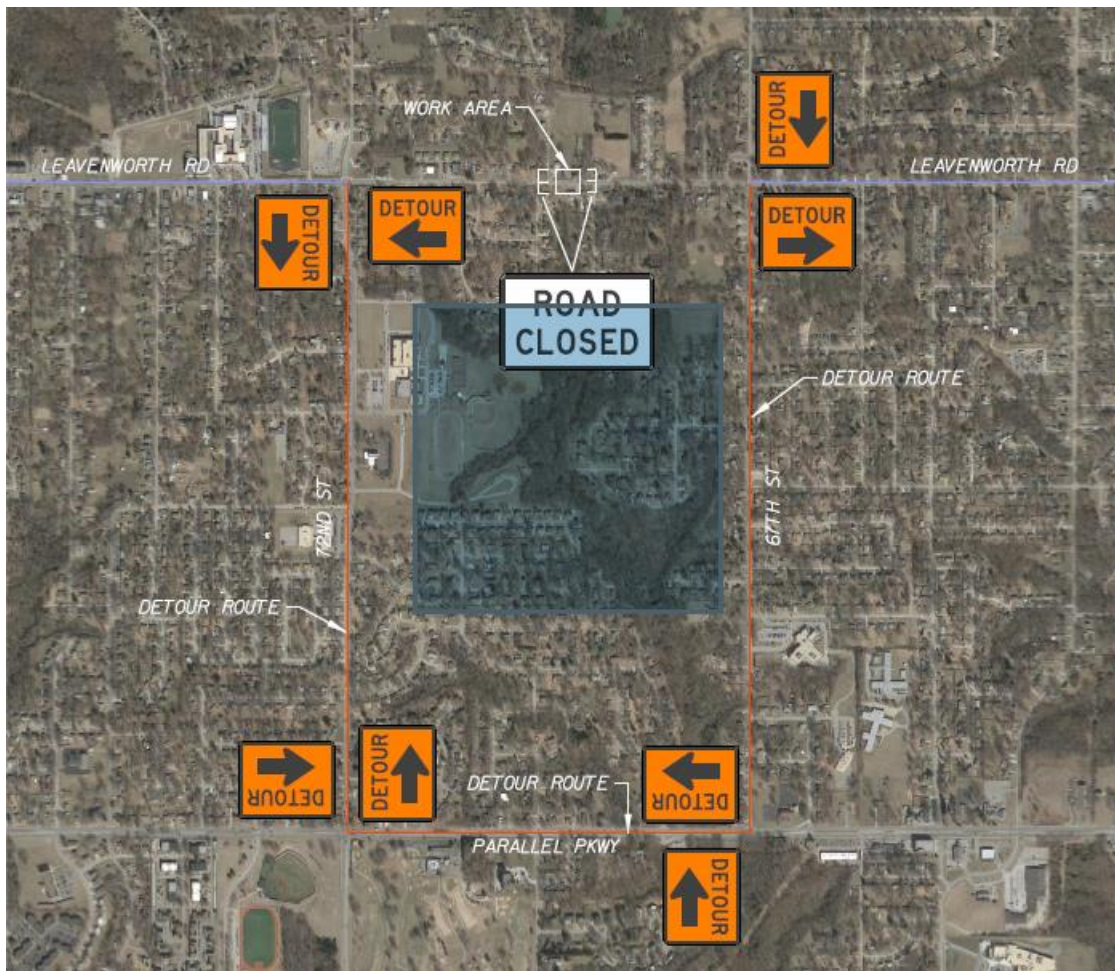
According to the Kansas Department of Transportation (KDOT), K-5 (Leavenworth Road), from North 69th Street to North 70th Street, will be closed beginning Friday, July 9.

Alternate routes can be accessed using North 67th Street and North 72nd Street and will be marked with detour signs. The road is expected to reopen on July 23.

This closure is part of a Unified Government roadway improvement project which includes grading, surfacing, and storm sewer work.

KDOT urges all motorists to be alert and obey the warning signs when approaching and driving through a highway work zone. To stay aware of all road construction projects across Kansas go to www.kandrive.org or call 5-1-1. Drive safely and always wear your seat belt.

Map below shows closure location and detours.



###

This information can be made available in alternative accessible formats upon request. For information about obtaining an alternative format, contact the KDOT Office of Public Affairs, 700 SW Harrison St., 2nd Fl. West, Topeka, KS 66603-3754 or phone 785-296-3585 (Voice) / 7-1-1 (Hearing Impaired).

Click below to connect to KDOT's Social Networks:

