

## An Update on KC Metro Highway Projects

Week of March 15, 2021

**Updated March 16**

Contact: Kim Stich, [Kim.stich@ks.gov](mailto:Kim.stich@ks.gov)

KDOT: [www.ksdot.org](http://www.ksdot.org)  
[www.KanDrive.org](http://www.KanDrive.org)

KanDrive:

NE Kansas KDOT: [Kansas City Metro releases](https://www.facebook.com/NEKansasKDOT)  
[@NEKansasKDOT](https://www.facebook.com/NEKansasKDOT)

Facebook:

[Kansas City Metro Projects List](https://www.facebook.com/KansasCityKDOT)  
[@KansasCityKDOT](https://www.facebook.com/KansasCityKDOT)

Twitter:

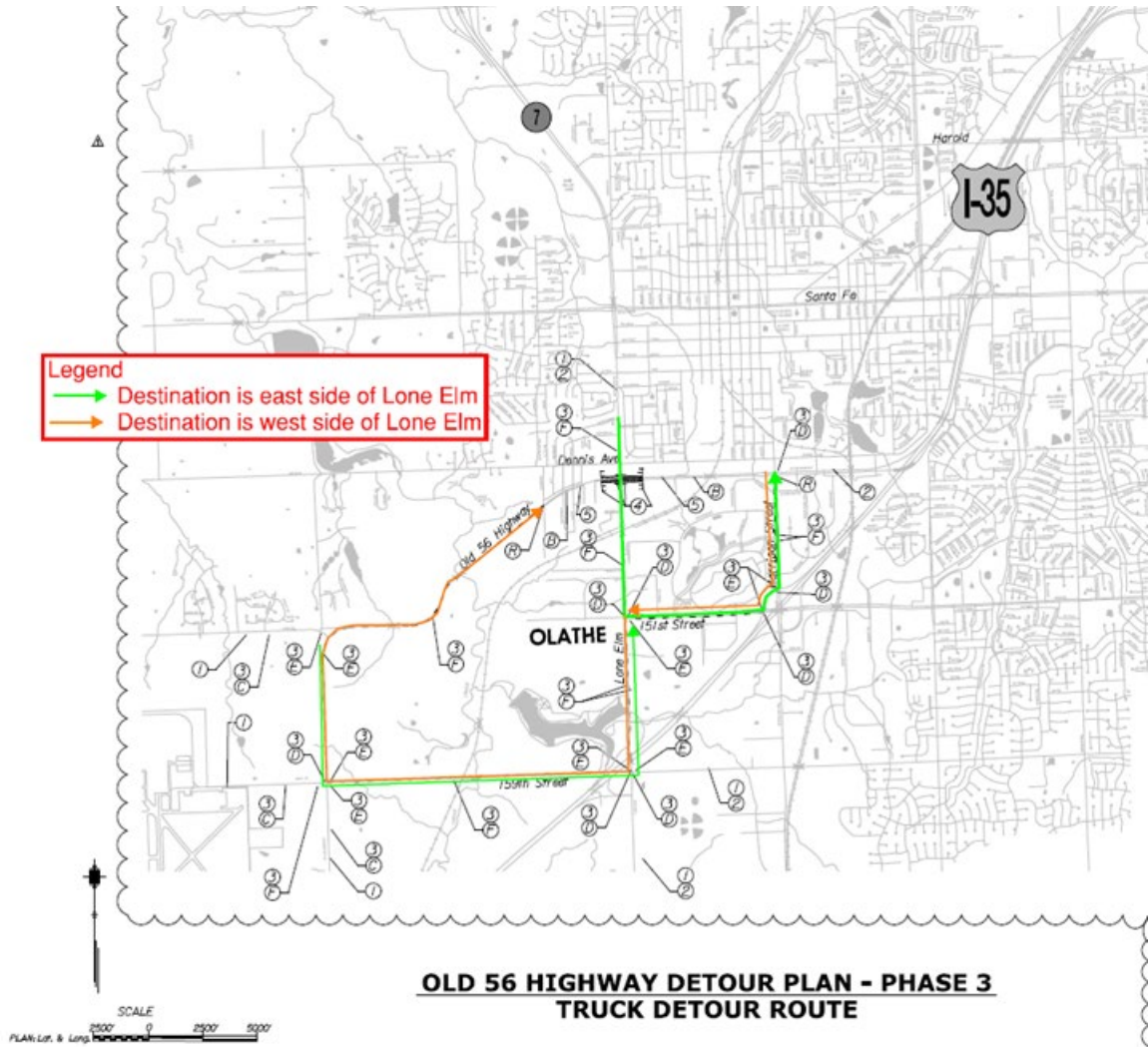
Nextdoor: Kansas Department of Transportation – District 1

### JOHNSON COUNTY

KDOT maintenance:

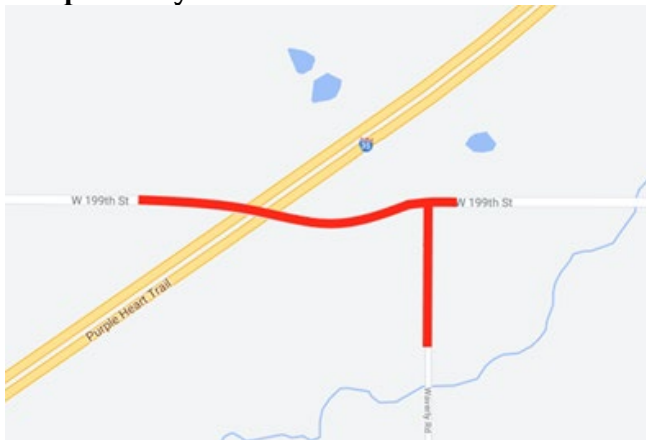
KDOT construction projects affecting traffic:

- 1. I-35 (NEW for March 16 only)** - Southbound near 119<sup>th</sup> St. will have a short (20 minutes max) left lane closure for sign structure work between 8 p.m. and 11 p.m. Northbound near 87<sup>th</sup> St. will have a short (20 minutes max) left lane closure for sign structure work between 8 p.m. and 11 p.m. This work is expected to be completed tonight.
- 2. K-7 at Old U.S. 56, City of Olathe project –reconfiguring the intersection at Lone Elm/Old U.S. 56.**  
**Old US 56 closed, March 1 to June 1.**  
To access the project website, which includes a video of how the intersection will operate following completion click [here](#).  
Old 56 will be closed on both the east and west sides of Lone Elm/Parker. Traffic will still be able to drive north/south through the intersection, but all turning movements and east/west travel will be restricted during the closure. (Detour map below) **NEW (ONGOING)**



**3. 199th St. and Waverly Road - (ONGOING)**

The 199th Street overpass over I-35 between Homestead Lane and Gardner Road is closed for the replacement of the overpass bridge. Waverly Road access to 199th Street from 207th Street is also closed. This project is expected to be completed by October 2021.



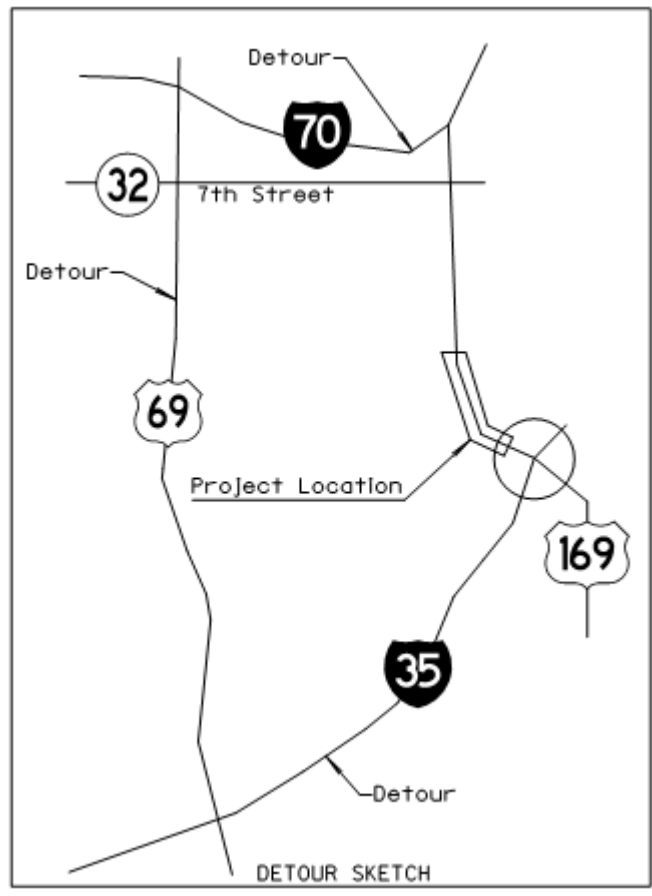
## WYANDOTTE COUNTY

KDOT maintenance:

KDOT construction projects affecting traffic:

1. **U.S. 169/7<sup>th</sup> St./Herman Dillon bridge replacement project. Northbound U.S. 169/7<sup>th</sup> St. to close Monday, March 15. NEW (ONGOING)**

- Work will include truss and expansion joint repair on the Kansas River bridge, primarily on the northbound side.
- Work will occur during daytime hours, Monday to Friday, and completion is expected in mid-June 2021. Weekend and night work may take place to close the bridge and for placement of traffic control equipment and detour signs.
- Southbound lanes are tentatively scheduled to close in April 2021 for approximately 60 days. The previous detour route will be utilized.



2. **Unified Government project – for roadway improvements, includes grading, surfacing and storm sewer work. Two lanes of traffic will be reduced to one 11 ft. wide lane of thru traffic using a flagging operation, Leavenworth Road/K-5 from 78<sup>th</sup> St. to 63<sup>rd</sup> St. Work will occur during daylight hours, Feb. 15 to Dec. 10. NEW (ONGOING)**

**3. Bike/pedestrian path project in Kansas City to begin March 15 – NEW (ONGOING)**

- Strong Avenue from 42nd St. to 24th St., along 24th St. from Strong Avenue to Metropolitan Avenue and along Metropolitan Avenue from 24th St. to 12th St.
- Work will occur 7 a.m. to 6 p.m., Monday to Friday and Saturdays as necessary, project completion expected end of May.
- Curb and sidewalk construction will begin on the south side of Strong Avenue between 36th St. and 25th St., where on-street parking will not be allowed, sidewalk closed and pedestrians detoured to the north side of the road. Once the south side is complete, construction will begin on the north side of Strong Ave.
- Parking will not be allowed in the areas designated as no parking.

**JEFFERSON COUNTY**

KDOT maintenance:

KDOT construction project affecting traffic:

**LEAVENWORTH COUNTY**

KDOT maintenance:

KDOT construction project affecting traffic:

For additional road condition details, check KDOT's updated traveler information website, [www.Kandrive.org](http://www.Kandrive.org). KDOT urges all motorists to be alert and obey the warning signs when approaching and driving through a work zone. Drive safely and always wear your seat belt.

Unsubscribe from this email list by emailing [kelly.kultala@ks.gov](mailto:kelly.kultala@ks.gov) (put Unsubscribe in the Subject line).

###

This information can be made available in alternative accessible formats upon request. For information about obtaining an alternative format, contact the KDOT Office of Public Affairs, 700 SW Harrison St., 2<sup>nd</sup> Fl West, Topeka, KS 66603-3754 or phone 785-296-3585 (Voice)/Hearing Impaired – 711.

Click below to connect to KDOT's Social Networks:

