

## An update on KC Metro highway projects

**Week of June 14, 2021**  
**Updated June 15**

Contact: Delaney Tholen, [Delaney.Tholen@ks.gov](mailto:Delaney.Tholen@ks.gov)

NE Kansas KDOT: [Kansas City Metro releases](#) [Kansas City Metro Projects List](#)

Facebook: [@NEKansasKDOT](#) Twitter: [@KansasCityKDOT](#)

Nextdoor: [Kansas Department of Transportation – District 1](#) KDOT: [www.ksdot.org](http://www.ksdot.org)

For additional road condition details, check KDOT's updated traveler information website, [www.KanDrive.org](http://www.KanDrive.org).

**PLEASE NOTE: U.S. 169 (7<sup>th</sup> St.)/I-70 bridge maintenance project will begin tomorrow, June 16. At 9 a.m. WB I-70 exit ramp to SB U.S. 169 will be closed and NB and SB U.S. 169 (7<sup>th</sup> St.) traffic reduced to 1 lane.**

### JOHNSON COUNTY

*KDOT maintenance projects:*

**NB and SB U.S. 69 from Blue Valley Pkwy. to Miami/Johnson Co. line, May 13-June 18, (ONGOING - UPDATED).** Traffic will be reduced to one lane for shoulder pavement overlay from 8 a.m. to 6 p.m., Monday - Saturday. Expect short-term ramp closures as work progresses throughout the day.

#### *Short-Term Closures*

**NB and SB I-35 at 119<sup>th</sup> St., June 14-18, NEW.** Single lane closures to install falsework. Work will occur from 7 p.m. to 6 a.m. nightly.

**EB K-10, from Woodland Rd. to Mill Creek, June 15-16, NEW.** Right lane closure for hub rail repair from 9 a.m. to 3:30 p.m. daily.

**Shawnee Mission Pkwy., from Brookridge Dr. to Falmouth Rd., June 16, NEW.** Lane closure for sidewalk maintenance from 9 a.m. to 5 p.m.

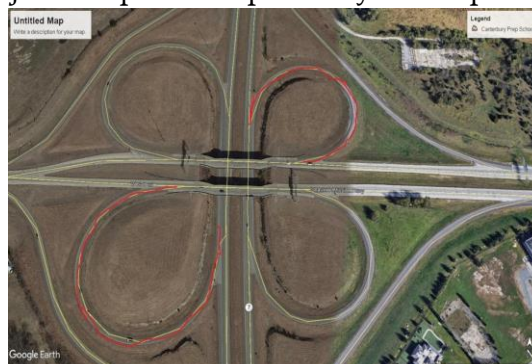
---

*KDOT construction projects affecting traffic:*

- 1. NB U.S. 69/179<sup>th</sup> St. to 191<sup>st</sup> St., start date June 14, NEW.** NB U.S. 69 will be reduced to one lane for bridge maintenance. Work will occur 7 a.m. to 5:30 p.m., Monday through Friday, with work on Saturday as needed. Project completion expected by mid-November.
- 2. City of Olathe project. WORK HAS BEEN PAUSED /// I-35/119<sup>th</sup> St. bridge, start date June 1, (ONGOING - UPDATED).** 119<sup>th</sup> St. bridge will be closed beginning June 1. I-35 will have daily lane closures. Right turns onto 119<sup>th</sup> St. from I-35 and right turns onto I-35 from 119<sup>th</sup> St. will be allowed. Please see "Short-Term Closures" for applicable daily I-35 closure info. I-35 will be

reduced to one lane in each direction during bridge demolition. Project completion expected by September.

3. **City of Gardner project. 191<sup>st</sup> to Gardner Rd., (ONGOING - UPDATED).** Project is addressing potholes on bridge and concrete surface work in preparation for Locust St. project. Bridge over I-35 will be reduced to a single lane that will only permit SB traffic. **Please see “Short-Term Closures” for applicable daily closure info.** When complete, existing intersection at Gardner Rd. and 191<sup>st</sup> St. will be closed. With addition of Locust St., a north/south street parallel to Gardner Rd., and access to Gardner Rd. will be established at 188<sup>th</sup> St. Work will occur Monday through Friday during daylight hours, with work on Saturday as needed. Project phase completion expected by early July.
4. **EB and WB K-10 at Lexington Ave. bridge reconstruction, start date May 24 (ONGOING-UPDATED).** A crossover, or temporary asphalt road, will be constructed in the median to redirect traffic onto WB K-10. Once traffic is redirected, the EB K-10 bridge deck installation will begin. **EB and WB K-10, near Lexington Ave., will be reduced to one lane of traffic in each direction, and EB K-10 on-ramp from Lexington Ave. will be closed.** Work will occur Monday through Friday during daylight hours, with work on Saturday as needed. Project completion expected by late November.
5. **U.S. 56 pavement maintenance project, Moonlight Rd. to I-35, start date May 8, (revised work times and closures) (ONGOING).** Work will include concrete pavement patching and asphalt overlay. EB and WB traffic will be reduced to one lane during hours of work. All lanes of traffic will be open when work is not being performed. Work will occur 7 p.m. to 6 a.m., Wednesday to Friday, and 7 p.m. Saturday to 6 a.m. Monday. **The off-ramp from SB New Century Pkwy. to WB U.S. 56 will also be closed: traffic will be able to access U.S. 56 using Industrial Bypass.** Off-ramp will be closed from 7 p.m. Wednesday to 6 a.m. Thursday. Project completion expected by mid-July.
6. **City of Shawnee project. NB and SB K-7 at 43<sup>rd</sup> St., start date April 29 (ONGOING).** This section of K-7 will be reduced to one lane for intersection reconstruction. Project completion expected by mid-August.
7. **Bridge deck maintenance at 67th St./Shawnee Mission Pkwy. over K-7, start date April 12 (ONGOING).** Project includes concrete patching, overlay and expansion joints. **Please be aware that SB K-7 to EB 67<sup>th</sup> St. ramp and NB K-7 to WB 67<sup>th</sup> St. ramp will be closed for duration of project.** All other ramps will remain open. Work will occur 7 a.m. to 5 p.m., Monday to Friday and Saturdays as needed. Project completion expected by mid-September. See map below:



8. **199<sup>th</sup> St. overpass and Waverly Rd., NB and SB I-35 (ONGOING - UPDATED).** 199<sup>th</sup> St. over I-35 closed between Homestead Ln. and Gardner Rd. for replacement of overpass bridge. Waverly Rd. access to 199<sup>th</sup> St. from 207<sup>th</sup> St. also closed. **I-35 will have intermittent daily lane closures.** Project completion expected by October.

**WYANDOTTE COUNTY**

*KDOT maintenance:*

**EB I-70 over Kansas River and on-ramp from Fairfax Trfy. to EB I-70, June 14-16, NEW.**

Left lane and on-ramp 243C closed for bridge inspection from 9 a.m. to 3 p.m. daily.

**NB K-7, from Kansas River to south of Kansas Ave., June 16, NEW.** Left lane closed for mill and overlay from 6 a.m. to 9 p.m. daily.

**SB K-7, from south of Kansas Ave. to Nettleton Ave., June 16, NEW.** Left lane closed for mill and overlay from 6 a.m. to 9 p.m. daily.

**Fairfax Tfwy. ramps at Washington Blvd. and Minnesota Ave./4<sup>th</sup> St., June 17, NEW.** Ramp closures for bridge inspections from 9 a.m. to 3 p.m.

---

*KDOT construction projects affecting traffic:*

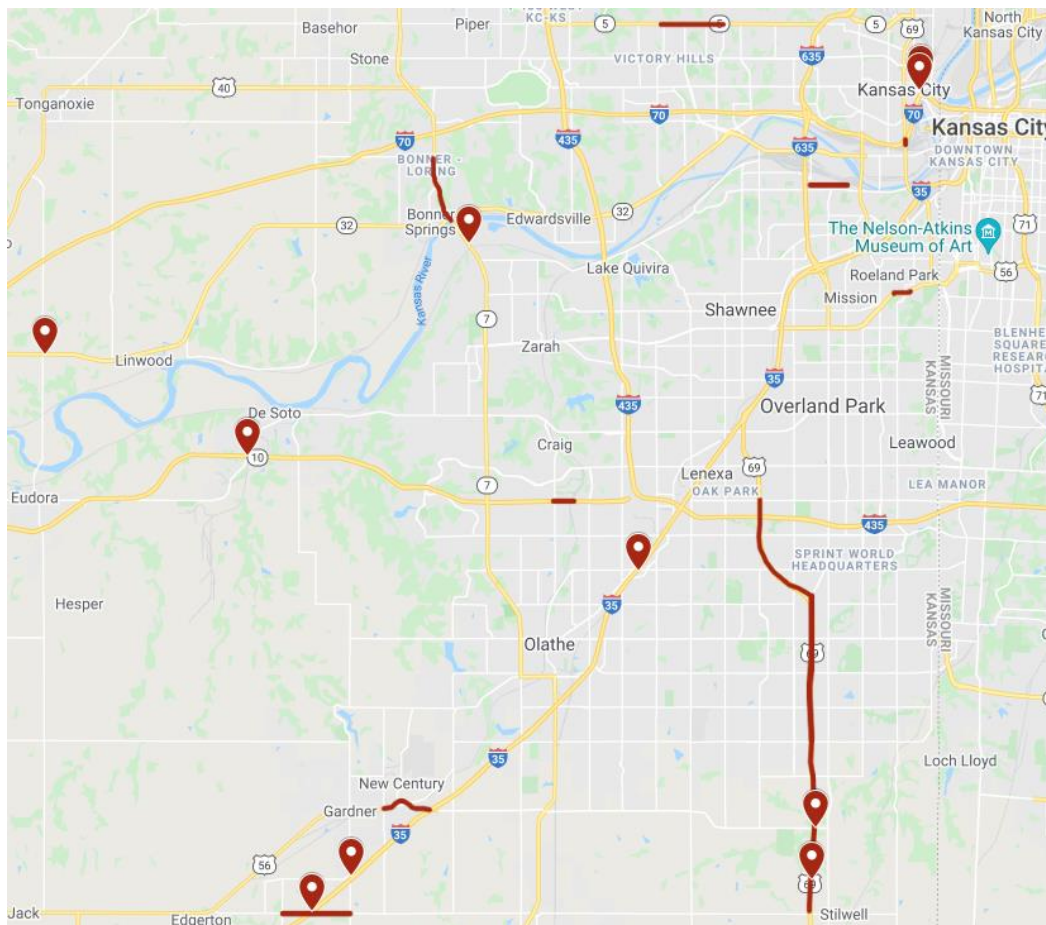
1. **U.S. 169 (7<sup>th</sup> St.)/I-70, start date June 16, (ONGOING - UPDATED).** WB I-70 to SB U.S. 169 (7<sup>th</sup> St.) exit ramp will be closed; U.S. 169 (7<sup>th</sup> St.) traffic will be reduced from two lanes to one lane in each direction for bridge maintenance. Ramp closure and lane reduction will remain for duration of project. **Traffic wanting to utilize WB I-70 to SB U.S. 169 (7<sup>th</sup> St.) exit ramp will be detoured to 18<sup>th</sup> St. exit and directed back to SB U.S. 169 (7<sup>th</sup> St.) on EB I-70.** Detour will be signed. Work will occur 7 a.m. to 3:30 p.m., Monday to Friday, and Saturdays as needed. Project completion expected by mid-October.
2. **PROJECT DELAYED /// K-7 from Kansas River to Elizabeth Ave., new start date TBD, (ONGOING - UPDATED).** Single lane closures will occur on K-7, and ramps will be closed as necessary to allow for paving operations, including asphalt pavement patching, placing treatment on shoulders, and pavement markings. Work will occur during daylight hours Monday to Friday, and Saturdays, as needed. Project will continue through end of July.  
**TRAFFIC ADVISORY: This mill and overlay project is adjacent to a City of Shawnee ongoing intersection reconstruction project at K-7 and 43<sup>rd</sup> Street. Traffic delays are expected and drivers are encouraged to find alternate routes.**
3. **Unified Government project. Leavenworth Rd./K-5 from 78<sup>th</sup> St. to 63<sup>rd</sup> St., start date February 15 (ONGOING).** Two lanes of traffic reduced to one 11 ft. wide lane of thru traffic using flagging operation. Roadway improvements include grading, surfacing and storm sewer work. Work will occur during daylight hours; project completion expected by December 10.
4. **Bike/pedestrian path project (ONGOING). Strong Ave. from 42<sup>nd</sup> St. to 24<sup>th</sup> St., along 24<sup>th</sup> from Strong Ave. to Metropolitan Ave. and along Metropolitan Ave. from 24<sup>th</sup> to 12<sup>th</sup> St.** Curb and sidewalk construction will begin on south side of Strong Ave. between 36<sup>th</sup> St. and 25<sup>th</sup> St., where on-street parking will not be allowed, sidewalk closed, and pedestrians detoured to north side

of road. Once south side is complete, construction will begin on north side of Strong Ave. Parking will not be allowed in areas designated as no parking. Work will occur 7 a.m. to 6 p.m., Monday to Friday and Saturdays as necessary; project completion expected by mid-June.

- 5. **Intersection improvements at K-32 and 222nd St., west of Linwood, start date April 5 (ONGOING).** Improvements include grading and asphalt surfacing for new lanes. **Traffic will be carried through existing lanes for duration of project, using flagging and pilot car operation.** Signage and traffic cones will also be used. Drivers should expect delays of up to 15 minutes and may want to find an alternative route. Work will occur 7 a.m. to 5 p.m., Monday to Friday and Saturdays, as needed. Project completion expected by end of June.

*KDOT urges all motorists to be alert and obey the warning signs when approaching and driving through a work zone. Drive safely and always wear your seat belt. Unsubscribe from this email list by emailing [delaney.tholen@ks.gov](mailto:delaney.tholen@ks.gov) (please include Unsubscribe in the Subject line).*

### **CURRENT KC METRO HIGHWAY KDOT PROJECT MAP**



###

This information can be made available in alternative accessible formats upon request. For information about obtaining an alternative format, contact the KDOT Office of Public Affairs, 700 SW Harrison St., 2<sup>nd</sup> Fl. West, Topeka, KS 66603-3754 or phone 785-296-3585 (Voice) / 7-1-1 (Hearing Impaired).

**Click below to connect to KDOT's Social Networks:**

