

UPDATED PROJECT ANNOUNCEMENT: Revised start date.

IMMEDIATE RELEASE

Aug. 10, 2022

For more information:

Delaney Tholen

785-817-9365

delaney.tholen@ks.gov

I-35 pavement marking begins Monday in southern Johnson County

Nightly lane closures are scheduled as part of a pavement improvement project on northbound and southbound I-35, from 215th Street to 167th Street in Johnson County, beginning on Monday, Aug. 15, weather permitting.

The Kansas Department of Transportation (KDOT) project includes placing pavement markings on all northbound and southbound I-35 lanes, as well as entrance and exit ramps at Sunflower Road, Homestead Lane and Gardner Road.

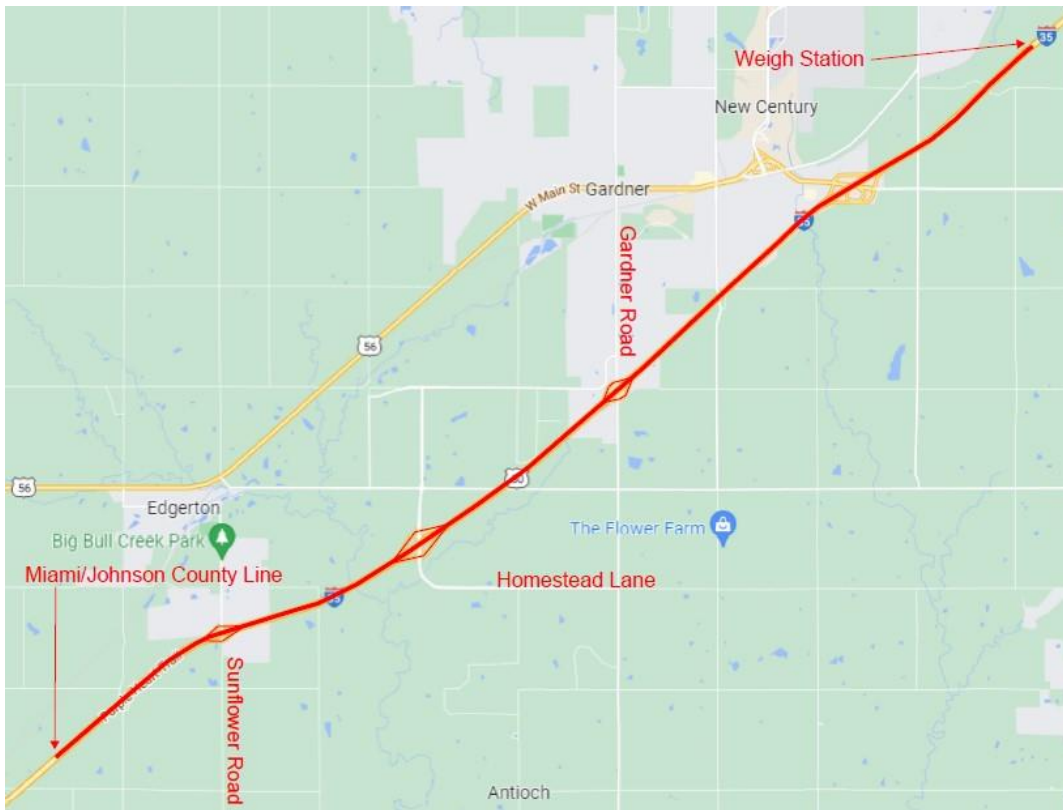
Work will take place nightly, Monday through Saturday, from 7 p.m. to 6 a.m.

Traffic will be controlled using portable lane closures, portable message signs, arrow boards, signage and traffic cones.

Twin Traffic Marking, of Kansas City, is the contractor for the \$412,000 project, which is scheduled to be completed in mid-September.

KDOT urges all motorists to be alert and obey the warning signs when approaching and driving through a highway work zone. To stay aware of all road construction projects across Kansas go to www.kandrive.org or call 5-1-1. Drive safely and always wear your seat belt.

Map below shows project location marked in red.



###

This information can be made available in alternative accessible formats upon request. For information about obtaining an alternative format, contact the KDOT Office of Public Affairs, 700 SW Harrison St., 2nd Fl. West, Topeka, KS 66603-3745 or phone 785-296-3585 (Voice) / 7-1-1 (Hearing Impaired).

Click below to connect to KDOT's Social Networks:

