

IMMEDIATE RELEASE

July 7, 2022

For more information:

Delaney Tholen

785-817-9365

delaney.tholen@ks.gov

Intersection improvement project underway at U.S. 73 (K-7) and Hollingsworth Road in Wyandotte County

An intersection improvement project at U.S. 73 (K-7) and Hollingsworth Road in Wyandotte County began July 5.

The Kansas Department of Transportation (KDOT) project includes an added turn lane, grading and surfacing, seeding, signing and pavement marking.

Work will take place from 7 a.m. to 4 p.m., Monday through Friday, and closures will follow two phases:

Phase I, July – August: outside lane of U.S. 73 (K-7) closed and Hollingsworth Road at U.S. 73 (K-7) closed;

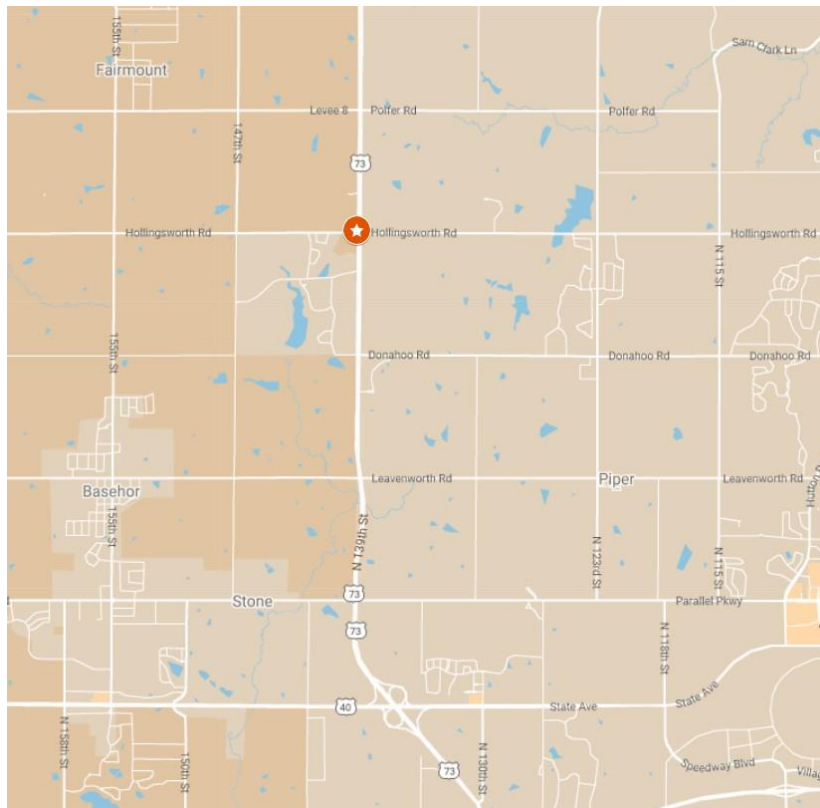
Phase II, August – October: inside lane of southbound U.S. 73 (K-7) closed and inside shoulder of U.S. 73 (K-7) closed.

Traffic will be controlled using portable message signs, arrow boards, signage, barricades and traffic cones.

Miles Excavating, of Basehor, is the contractor for the \$846,000 project, which is scheduled to be completed in mid-October.

KDOT urges all motorists to be alert and obey the warning signs when approaching and driving through a highway work zone. To stay aware of all road construction projects across Kansas, go to www.kandrive.org or call 5-1-1. Drive safely and always wear your seat belt.

Map below shows project location in orange.



###

This information can be made available in alternative accessible formats upon request. For information about obtaining an alternative format, contact the KDOT Office of Public Affairs, 700 SW Harrison St., 2nd Fl. West, Topeka, KS 66603-3754 or phone 785-296-3585 (Voice) / 7-1-1 (Hearing Impaired).

Click below to connect to KDOT's Social Networks:

