

IMMEDIATE RELEASE

April 10, 2023

For more information:

Delaney Tholen

785-817-9365

delaney.tholen@ks.gov

I-435 pavement improvement project resumes tonight in Johnson County

A Kansas Department of Transportation pavement improvement project on eastbound and westbound I-435, from Metcalf Avenue to State Line Road, will resume tonight, Monday, April 10, in Johnson County, weather permitting.

The project began in July 2022 and includes concrete pavement patching, concrete surface grinding and pavement marking on all lanes and ramps.

In areas where work is taking place, eastbound and westbound I-435 lanes will be closed nightly, and the following I-435 entrance and exit ramps will be closed as needed: Metcalf Avenue, Nall Avenue, Roe Avenue and State Line Road.

Work will take place nightly as follows:

Sunday through Thursday, from 7 p.m. to 6 a.m.;

Friday, from 7 p.m. to 8 a.m.;

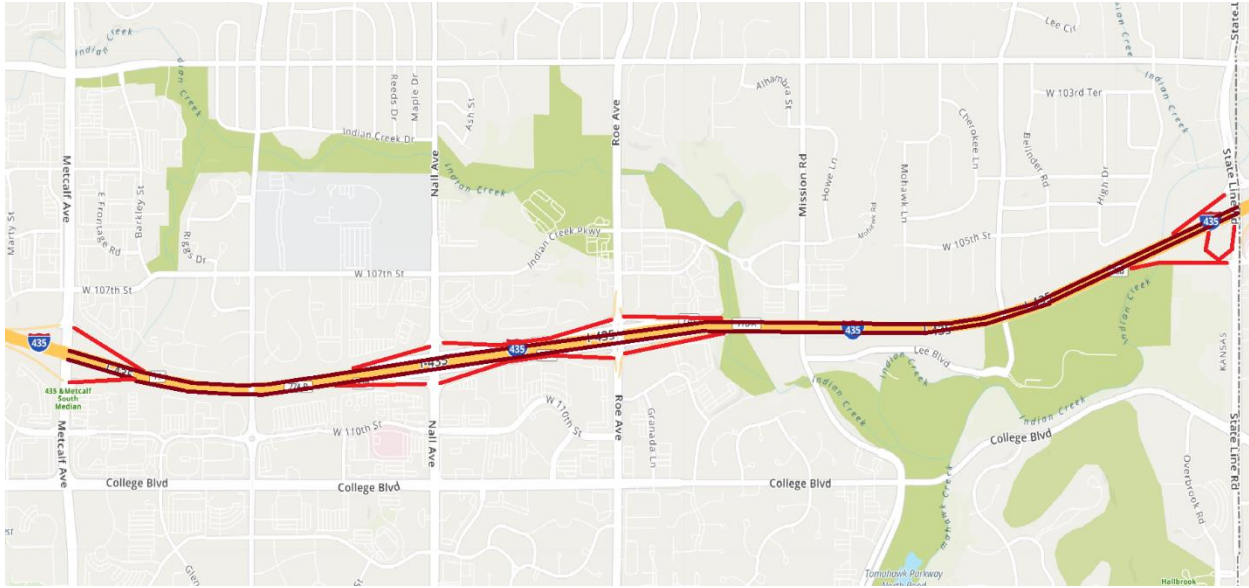
Saturday, from 7 p.m. to 9 a.m.

All lanes will be open to traffic from 6 a.m. to 7 p.m., Monday through Friday, and from 9 a.m. to 7 p.m. on Saturday and Sunday.

During work hours, a minimum of two through lanes will be open to traffic and no more than two consecutive ramps will be closed at the same time. Traffic will be controlled using portable message signs, arrow boards, signage and traffic cones. Message boards alerting motorists are in place, notifying the start of the project.

Clarkson Construction Company, of Kansas City, Mo., is the contractor for the \$5.1 million project, which is scheduled to be completed in late July.

Map below shows project location (lanes are marked in dark red; ramps are marked in red).



###

This information can be made available in alternative accessible formats upon request. For information about obtaining an alternative format, contact the KDOT Division of Communications, 700 SW Harrison St., 2nd Fl. West, Topeka, KS 66603-3745 or phone 785-296-3585 (Voice) / 7-1-1 (Hearing Impaired).

Click below to connect to KDOT's Social Networks:

