

An update on KC Metro highway projects

Week of Sept. 18, 2023

Updated Sept. 20

Contact: Delaney Tholen, delaney.tholen@ks.gov

KDOT website: [KC metro area news releases](#)

Facebook: [/NEKansasKDOT](#) X (Twitter): [@KansasCityKDOT](#)

Nextdoor: [Kansas Department of Transportation – District 1](#) KDOT: www.ksdot.gov

All work is weather permitting. For additional road condition details, check KDOT's updated traveler information website, www.KanDrive.gov.

JOHNSON COUNTY

KDOT short-term closures:

NB and SB I-35, 151st St. to 167th St., September 21 – 22, NEW. Single lane closures for guardrail replacement from 9 a.m. to 3 p.m.

U.S. 169/36th St., September 20 – October 20, NEW. Alternating lane closures at intersection for utility and construction work.

EB and WB U.S. 56, Waverly Rd. to Sycamore St., September 18 – 23, ONGOING – UPDATED. Lane closures for pavement marking from 7 p.m. to 6 a.m.

EB and WB U.S. 56, Cedar Niles Rd. to S. Clare Rd., September 18 – 23, ONGOING – UPDATED. Lane closures and **intermittent ramp closures** (U.S. 56/I-35 entrance and exit ramps) for pavement operations from 7 p.m. to 6 a.m.

U.S. 69, 103rd St. to 151st St., lane expansion and interchange improvement project:

EB and WB 139th St., Lowell Ave. to Newton St., September 21 – 22, NEW. Roadway **fully closed** for bridge work from 9 a.m. to 4 p.m. *Detours are marked.*

EB and WB 143rd St., Hemlock St. to Newton St., September 21 – 22, NEW. Roadway **fully closed** for bridge work from 9 a.m. to 4 p.m. *Detours are marked.*

SB U.S. 69 at 143rd St., September 21 – 22, NEW. Single right lane closed for bridge work from 9 a.m. to 4 p.m.

WB I-435/U.S. 69, September 18 – October 2, NEW. Ramps closed (WB I-435 to

SB U.S. 69 ramp and NB U.S. 69 to WB I-435 ramp) closed for bridge work from 9 a.m. to 4 p.m.

EB and WB 135th St. at U.S. 69, September 12 – 23, ONGOING – UPDATED. Inside lane closures for bridge work nightly as follows:

Mon-Thurs: 8 p.m. to 6 a.m.

Fri: 8 p.m. to 10 a.m.

SB U.S. 69, 119th St. to Antioch Rd., September 6 – 22, ONGOING – UPDATED.

Single left lane closed for barrier wall work from 9 a.m. to 4 p.m.

WB I-435 at U.S. 69, September 5 – 29, ONGOING – UPDATED. Inside lanes closed for bridge work from 9 a.m. to 4 p.m.

SB U.S. 69, 132nd St. 143rd St., September 5 – 23, ONGOING – UPDATED.

Alternating lane closures for project truck access nightly as follows:

Mon-Thurs: 8 p.m. to 6 a.m.

Fri: 8 p.m. to 10 a.m.

Sat: 6 p.m. to 10 a.m.

Sun: 5 p.m. to 6 a.m.

SB U.S. 69, 103rd St. to I-435, August 31– September 23, ONGOING – UPDATED.

Single right lane closed for project truck access nightly as follows:

Mon-Thurs: 8 p.m. to 6 a.m.

Fri: 8 p.m. to 10 a.m.

Sat: 6 p.m. to 10 a.m.

Sun: 5 p.m. to 6 a.m.

SB U.S. 69, 132nd St. to 143rd St., August 22 – September 23, ONGOING – UPDATED. Alternating lane closures for project truck access nightly as follows:

Mon-Thurs: 8 p.m. to 6 a.m.

Fri: 8 p.m. to 10 a.m.

Sat: 6 p.m. to 10 a.m.

Sun: 5 p.m. to 6 a.m.

SB U.S. 69/135th St., August 22 – September 29, ONGOING – UPDATED. Ramp right lane (SB U.S. 69 to 135th St. exit ramp) closed for project truck access from 9 a.m. to 4 p.m.

EB and WB 139th St. at U.S. 69, August 16 – September 29, ONGOING – UPDATED. EB and WB 139th St. traffic reduced to single lane with flagging operation for project truck access from 9 a.m. to 4 p.m.

135th St./SB U.S. 69, July 22 – November 15, ONGOING – UPDATED. Ramp closed (135th St. to SB U.S. 69 entrance ramp) for bridge work. *Detours are marked.*

NB U.S. 69 at EB 135th St., June 6 – November 15, ONGOING. Ramp closed (EB 135th St. to NB U.S. 69 entrance ramp) for pavement work.

SB U.S. 69 at Indian Creek, April 3 – September 23, ONGOING – UPDATED.

Single right lane closure on bridge over Indian Creek for project access to bridge from 9 a.m. to 4 p.m. and nightly, as follows:

Mon-Thurs: 8 p.m. to 6 a.m.

Fri: 8 p.m. to 10 a.m.

KDOT construction projects affecting traffic:

NB and SB I-35, 151st St. to 167th St., start date September 21, NEW. Guardrail replacement project. NB and SB I-35 will have lane closures and intermittent ramp closures in the work zone. Work will take place daily, Monday through Friday, from 9 a.m. to 3 p.m. **Please see “Short-Term Closures” for applicable ramp closure info.** Project completion expected by late November.

EB and WB U.S. 56, W. Warren St. to Sycamore St, and Cedar Niles Rd. to S. Clare Rd., start date September 9, ONGOING. Pavement improvement project; milling and overlay and pavement marking on all lanes of U.S. 56, including intersections, turn lanes, widenings, shoulders and I-35/U.S. 56 interchange ramps. EB and WB U.S. 56 lanes will have lane closures and intermittent ramp closures in the work zone. Work will take place nightly, Monday through Friday, from 7 p.m. to 6 a.m. **Please see “Short-Term Closures” for applicable nightly ramp closure info.** Project completion expected by early October.

EB K-10 at Kill Creek, start date July 5, ONGOING – UPDATED. Bridge deck replacement project; work includes replacement of the EB K-10 bridge deck and approach slab replacement, bearing resetting and girder painting. WB K-10 will be constructed to carry single lane traffic head-to-head during the project. Once this is complete, EB K-10 traffic will be shifted to travel on the WB K-10 roadway and construction on the EB K-10/Kill Creek bridge will begin. Project work will require one lane of the Lexington Avenue to EB K-10 entrance ramp to be closed for the duration of the project. **Please see “Short-Term Closures” for applicable daily closure info.** Work will take place Monday through Friday, and Saturdays as needed, and project completion is expected by November 2023.

NB and SB I-35, Lamar Ave. to MO state line, start date April 10, ONGOING - UPDATED. Pavement improvement project; work includes milling and overlay, concrete pavement patching and pavement marking. NB and SB I-35 lanes will have single and double lane closures and intermittent ramp closures in the work zone. Work will take place nightly, Monday through Thursday, from 7 p.m. to 6 a.m., and Friday and Saturday, from 7 p.m. to 8 a.m. **Please see “Short-Term Closures” for applicable daily ramp closure info.** Project completion expected by September.

NB and SB U.S. 69, 103rd St. to 151st St., and U.S. 69/167th St., start date February 16, ONGOING. Lane expansion and interchange improvement project; work includes widening of NB and SB U.S. 69, from 103rd St. to 151st St., which will include a tolled express lane in each direction, and improvements to the U.S. 69/167th St. interchange. Area lane and ramp closures will be scheduled for the duration of the project, with traffic control changing as the project progresses. Work will take place daily and nightly. **Please see “Short-Term Closures” for applicable daily and nightly closure info.** Express lanes are scheduled to open in December 2025 with the project expected to be completed by the end of 2026.

EB and WB I-435, Metcalf Ave. to State Line Rd., start date July 2022, **ONGOING – UPDATED**. **Pavement improvement project**; work includes concrete pavement patching, concrete surface grinding and pavement marking. EB and WB I-435 lanes will have single and double lane closures and intermittent ramp closures in the work zone. Work has resumed after winter shutdown and will take place nightly. **Please see “Short-Term Closures” for applicable daily closure info.** Project completion expected by early November 2023.

City of Gardner project; U.S. 56, E. Main St. to New Century Pkwy., start date March 2022, **ONGOING – UPDATED**. **Pavement reconstruction project**; improvements include roadway, driveway and sidewalk reconstruction, curb and gutter replacement, additional turning lane and updated traffic signal infrastructure. U.S. 56/E. Main St. will be reduced to one lane in each direction (**with 11 ft. width restriction**) between Sycamore St. and east of Moonlight Rd. for the duration of the project. Access to some side roads from E. Main St. will be restricted. Work will occur Monday through Friday from 7 a.m. to 7 p.m., with work on Saturday as needed. Project completion expected by late September 2023.

LEAVENWORTH COUNTY

KDOT short-term closures:

EB and WB K-92, U.S. 73 (K-7/4th St.) to MO 45 Spur, September 26, NEW. EB and WB K-92 **fully closed** to traffic for Centennial Bridge inspections from 9 a.m. to 3 p.m.

EB and WB K-92, U.S. 73 (K-7/4th St.) to MO 45 Spur, September 20 – 25, NEW. EB and WB K-92 traffic reduced to single lane with flagging operation for Centennial Bridge inspections from 9 a.m. to 3 p.m.

KDOT construction projects affecting traffic:

Leavenworth County project; Fairmont Rd. over Little Stranger Creek, start date May 15, **ONGOING**. **Bridge improvement project**; improvements include grading elevation modifications and asphalt pavement reconstruction. For the duration of the project, Fairmont Rd. will be fully closed to traffic, from Tonganoxie Rd. to 171st St. Work will occur Monday through Friday from 7 a.m. to 3:30 p.m., with work on Saturday as needed. Project completion expected by early November.

WYANDOTTE COUNTY

KDOT short-term closures:

WB I-70/NB I-435/State Ave., September 20 – 21, NEW. **Ramps closed** (WB I-70 to NB I-435/State Ave. ramps and NB I-435 to EB State Ave. ramp) for maintenance operations from 9 a.m. to 3 p.m.

I-70/Central Ave., September 12 – November 1, NEW. Central Ave. closed at I-70; EB I-70 single lane closed at Central Ave. and **ramp closed** (WB Central Ave. to WB I-70 entrance ramp) for bridge pier maintenance and repair work.

KDOT closures:

SB K-5, south of Sunshine Rd., March 27 – November 2025, **ONGOING – UPDATED.**

Bridge over Union Pacific Railroad, south of Sunshine Rd., **closed to traffic** for maintenance work.

KDOT construction projects affecting traffic:

Shawnee Dr./I-635, start date March 15, **ONGOING.** **Bridge deck replacement project;** work includes replacement of the Shawnee Dr. bridge over I-635. Detours for Shawnee Dr. will be marked directing traffic toward Merriam Ln. and Metropolitan Ave.; I-635 entrance and exit ramps at Merriam Ln. and Metropolitan Ave. will be used as turnarounds for Shawnee Dr. motorists wanting to travel to the opposite side of the bridge. The bridge will fully close to traffic on March 17 and remain closed until September. **Please see “Short-Term Closures” for applicable nightly closure info.** Work will take place Monday through Friday from 7 a.m. to 3:30 p.m. and project completion is expected by November 2023.

K-32/Turner Diagonal Fwy./Kaw Dr., start date October 2022, **ONGOING.** **Bridge replacement project;** work includes replacement of the EB and WB K-32/Turner Diagonal Fwy. bridges over Kaw Dr. and the Union Pacific Railroad lines. Adjacent ramp closures and lane and shoulder closures are scheduled on EB and WB K-32/Turner Diagonal Fwy. from approximately 65th St. to 59th Ln.; a single lane will be open at all times. Crossovers will be built to carry traffic head-to-head through the work zone. Detours are marked. Work is scheduled in multiple phases with traffic control placed first to prepare for bridge replacements. Bridge work will begin in March 2023. EB Kaw Dr. will be closed during bridge demolitions in 2023 and 2024. Work will take place Monday through Friday from 7 a.m. to 3:30 p.m. Project will shut down in November for the winter and resume in March 2023 and again from November 2023 to March 2024. Project completion is expected by December 2024.

NB and SB U.S. 73 (K-7)/Parallel Pkwy., start date September 2022, **ONGOING – UPDATED.** **Intersection improvement project;** work includes resurfacing for the installation of a Restricted Crossing U-Turn (RCUT) at the intersection of U.S. 73 (K-7) and Parallel Pkwy. Traffic will be managed in four phases and crossovers will be built to carry U.S. 73 (K-7) traffic head-to-head through the work zone. Phase 2 (March – July 2023): U.S. 73 (K-7), State Ave. to Leavenworth Rd., reduced to single lane with **12’ lane width restriction;** traffic will cross over to travel head-to-head on existing SB lanes; Phase 3 (July – December 2023): U.S. 73 (K-7), State Ave. to Leavenworth Rd., reduced to single lane with **12’ lane width restriction;** traffic will cross over to travel head-to-head on newly constructed NB lanes; and Phase 4 (December 2023): lane and shoulder closures during work hours; single lane to be opened at all times. Work will take place Monday through Saturday from 7 a.m. to 5 p.m. Project completion is expected by September 2023.

EB and WB I-70, 78th St. to Lewis and Clark viaduct bridge, start date May 2022, **ONGOING – UPDATED.** **Pavement improvement project;** double lane closures on I-70 and **ramps closed as needed** in project area. Work will occur overnight, weather permitting. **Please see “Short-Term Closures” for applicable nightly closure info;** completion expected by September 2023.

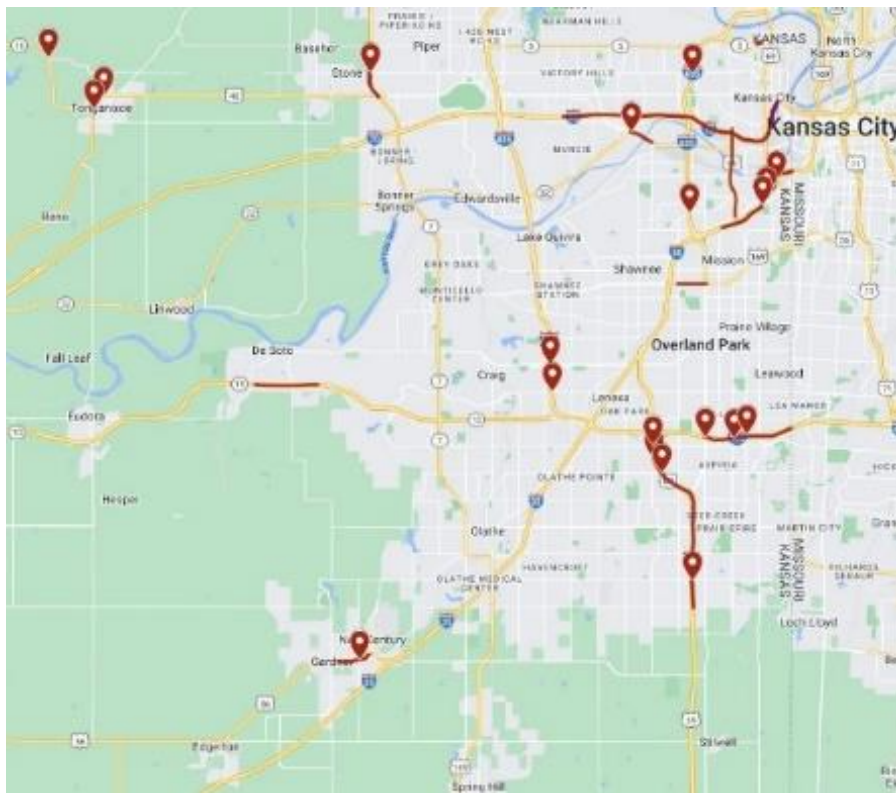
MULTI-COUNTY

KDOT construction projects affecting traffic:

K-5/I-435 to U.S. 73, start date **June 5**, **ONGOING**. Pavement improvement project; work includes mill and overlay on K-5 in Wyandotte and Leavenworth counties. For the duration of the project, while work is taking place, a pilot car operation will carry traffic through the work zone. Work will occur Monday through Saturday, from 6 a.m. to 7 p.m. Project completion is expected by September.

KDOT urges all motorists to be alert and obey the warning signs when approaching and driving through a work zone. Drive safely and always wear your seat belt. Unsubscribe from this email list by emailing delaney.tholen@ks.gov (please include Unsubscribe in the Subject line).

CURRENT KC METRO HIGHWAY KDOT PROJECT MAP



###

This information can be made available in alternative accessible formats upon request. For information about obtaining an alternative format, contact the KDOT Division of Communications, 700 SW Harrison St., 2nd Fl. West, Topeka, KS 66603-3745, or phone 785-296-3585 (Voice) / 7-1-1 (Hearing Impaired).

Click below to connect to KDOT's Social Networks:

