

PLEASE NOTE UPDATED CLOSURE DATE HIGHLIGHTED BELOW

IMMEDIATE RELEASE

Oct. 9, 2023

For more information:

Delaney Tholen

785-817-9365

delaney.tholen@ks.gov

K-32/Turner Diagonal Freeway closure begins Wednesday in Wyandotte County

A Kansas Department of Transportation bridge replacement project in Wyandotte County requires closure of eastbound and westbound K-32/Turner Diagonal Freeway, from 65th Street to 59th Lane, at 9 a.m. on **Wednesday, Oct. 11**, weather permitting.

This closure is necessary for demolition and construction work required by the K-32/Turner Diagonal Freeway bridge replacement project over Kaw Drive and Union Pacific Railroad tracks and will be active until December 2024. Adjacent ramps in the project work zone will remain closed.

Message boards have been placed in the area to notify motorists of the upcoming closure.

The following will be fully closed to traffic on **Wednesday, Oct. 11 at 9 a.m.:**

- **Eastbound and westbound K-32/Turner Diagonal Freeway, from 65th Street to 59th Lane.**

Detours will be marked as follows:

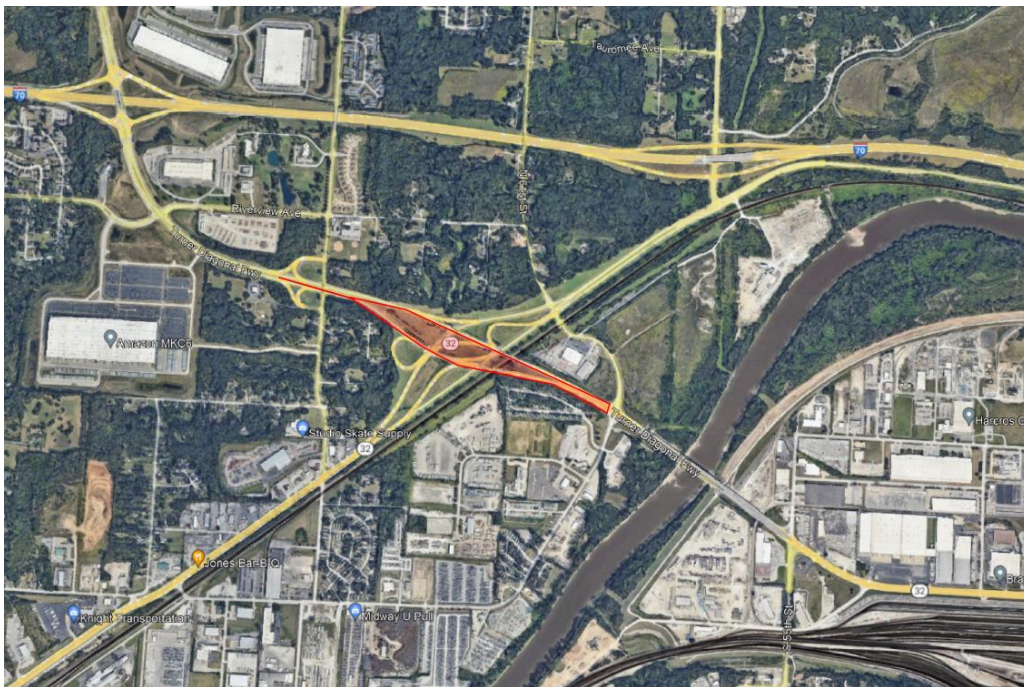
- Eastbound K-32: traffic will be directed to eastbound Kaw Drive, then to northbound 57th Street and to eastbound I-70 to southbound I-635 to K-32.
- Westbound K-32: traffic will be directed to northbound I-635 to westbound I-70, and from westbound I-70 to southbound 57th Street, then to westbound Kaw Drive, and onto westbound K-32.

- Southbound Turner Diagonal Freeway: traffic will be directed to eastbound I-70 to southbound I-635, then to K-32. *Local traffic will be directed to exit southbound Turner Diagonal Freeway at 65th Street.*

Traffic will be controlled using message boards, signs, traffic cones, channelizers and barricades.

KDOT urges all motorists to be alert and obey the warning signs when approaching and driving through a highway work zone. To stay aware of all road construction projects across Kansas please visit www.kandrive.gov online or call 5-1-1. Drive safely and always wear your seat belt.

Map below shows closure location marked in red.



###

This information can be made available in alternative accessible formats upon request. For information about obtaining an alternative format, contact the KDOT Division of Communications, 700 SW Harrison St., 2nd Fl. West, Topeka, KS 66603-3745 or phone 785-296-3585 (Voice) / 7-1-1 (Hearing Impaired).

Click below to connect to KDOT's Social Networks:

