

IMMEDIATE RELEASE

March 10, 2023

For more information:

Delaney Tholen

785-817-9365

delaney.tholen@ks.gov

K-32/Turner Diagonal Freeway/Kaw Drive interchange bridge project to resume Monday in Wyandotte County

After a scheduled winter shutdown period, work at the K-32/Turner Diagonal Freeway/Kaw Drive interchange is scheduled to resume Monday, March 13, weather permitting, in Wyandotte County.

The Kansas Department of Transportation multi-phase project began in October 2022 and includes replacement of the eastbound and westbound K-32/Turner Diagonal Freeway bridges over Kaw Drive and the Union Pacific Railroad lines.

In the first phase of work, crossover construction was started to carry eastbound and westbound K-32/Turner Diagonal Freeway traffic head-to-head through the work zone. When the project resumes, crossover construction will continue and bridge work will begin.

Impacts to traffic are as follows (*Phase 1 of the project has been completed*):

Phase 2 (March – November 2023): various ramp closures; single lane K-32/Turner Diagonal Freeway traffic will cross over to travel head-to-head; eastbound Kaw Drive closure during bridge demolition;

Phase 3 (March – December 2024): various ramp closures; single lane K-32/Turner Diagonal Freeway traffic will cross over to travel head-to-head; eastbound Kaw Drive closure during bridge demolition.

Beginning March 14, eastbound and westbound K-32 traffic will be reduced to one lane, from 55th Street to 65th Street, and the following week, the ramps listed below will close:

- Eastbound K-32 to continue on eastbound K-32
- Southbound Turner Diagonal Freeway to eastbound Kaw Drive
- Westbound K-32 to continue on westbound K-32
- Westbound Kaw Drive to eastbound K-32

Work will occur daily, Monday through Friday, from 7 a.m. to 3:30 p.m. Message boards are in place alerting motorists to closures and directing traffic toward advised detours.

Detours will be marked and include the following:

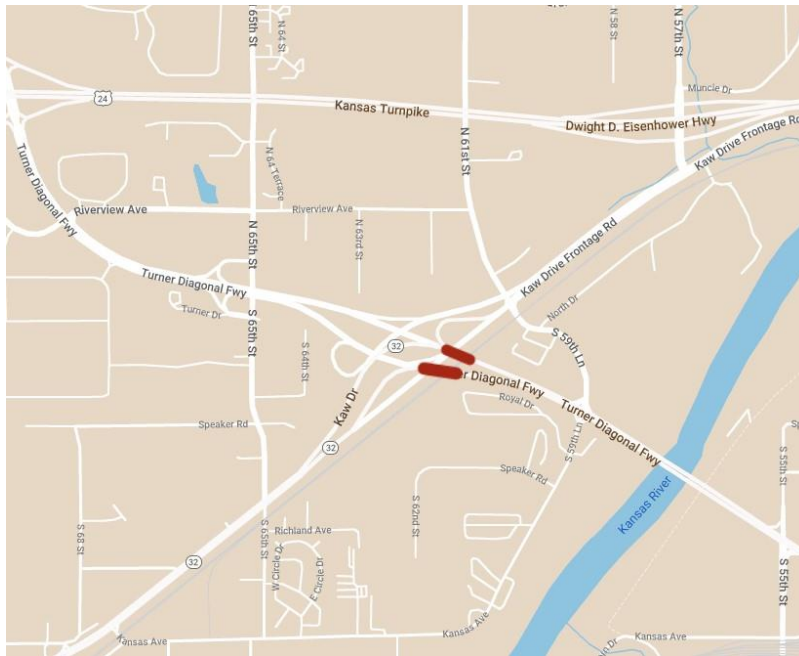
- **Eastbound K-32 ramp to continue on eastbound K-32 (*purple on map*):** Traffic will be directed east on Kaw Drive to 57th Street and travel north to eastbound I-70, then take exit to enter southbound I-635.
- **Southbound Turner Diagonal Freeway to Eastbound Kaw Drive ramp (*blue on map*):** Traffic will be directed east on K-32 and take exit to enter northbound I-635, take exit to enter westbound I-70, then exit at 57th Street and travel south to eastbound Kaw Drive.
- **Westbound K-32 ramp to continue on westbound K-32 (*orange on map*):** Traffic will be directed via northbound I-635 to take exit and enter westbound I-70, then exit at 57th Street and travel south to Kaw Drive and then enter westbound K-32.
- **Westbound Kaw Drive to eastbound K-32 ramp (*green on map*):** Traffic will be directed west to travel northbound on 57th Street and enter eastbound I-70, then enter southbound I-635 and take exit for eastbound K-32.

Traffic will be controlled using lane closures, barricades, message boards, signage and traffic cones.

Project work is scheduled to shut down from November 2023 to March 2024 for the winter season. Miles Excavating, of Basehor, is the contractor for the \$22.7 million project, which is scheduled to be completed in December 2024.

KDOT urges all motorists to be alert and obey the warning signs when approaching and driving through a highway work zone. To stay aware of all road construction projects across Kansas go to www.kandrive.org or call 5-1-1. Drive safely and always wear your seat belt.

Maps below show project locations marked in red and detours in purple, blue, orange and green.



Turner Diagonal/K-32/Kaw Drive Detours

EB K32 (Ramp A) Detour	
EB K32 (Ramp A) Detour	
SB Turner Diag. to EB Kaw Dr. (Ramp B) Detour	
SB Turner Diag. to EB Kaw Dr. (Ramp B) Detour	
WB K32 (Ramp C) Detour	
WB K32 (Ramp C) Detour	
WB Kaw Dr. to EB K32 (Ramp D) Detour	
WB Kaw Dr. to EB K32 (Ramp D) Detour	
WB Kaw Dr. to EB K32 (Ramp D) Detour	

###

This information can be made available in alternative accessible formats upon request. For information about obtaining an alternative format, contact the KDOT Division of Communications, 700 SW Harrison St., 2nd Fl. West, Topeka, KS 66603-3745 or phone 785-296-3585 (Voice) / 7-1-1 (Hearing Impaired).

Click below to connect to KDOT's Social Networks:

