

IMMEDIATE RELEASE

Aug. 4, 2023

For more information:

Delaney Tholen

785-817-9365

delaney.tholen@ks.gov

**Westbound I-70 and I-35/I-70 short-term closures scheduled overnight
next weekend in central Kansas City**

A Kansas Department of Transportation maintenance project will require an overnight short-term closure of westbound I-70 and the northbound I-35 to westbound I-70 ramp in Missouri next weekend for removal of a sign truss over westbound I-70 in Kansas City, Kansas.

The following will be fully closed to traffic from Saturday, August 12 at 11 p.m. to Sunday, August 13 at 5 a.m.:

- **Westbound I-70, between Delaware Street and Wyandotte Street, and**
- **Northbound I-35 to westbound I-70 ramp.**

During the scheduled closure time, eastbound I-70 will remain open and traffic will be directed around the closures using the Kansas City downtown loop.

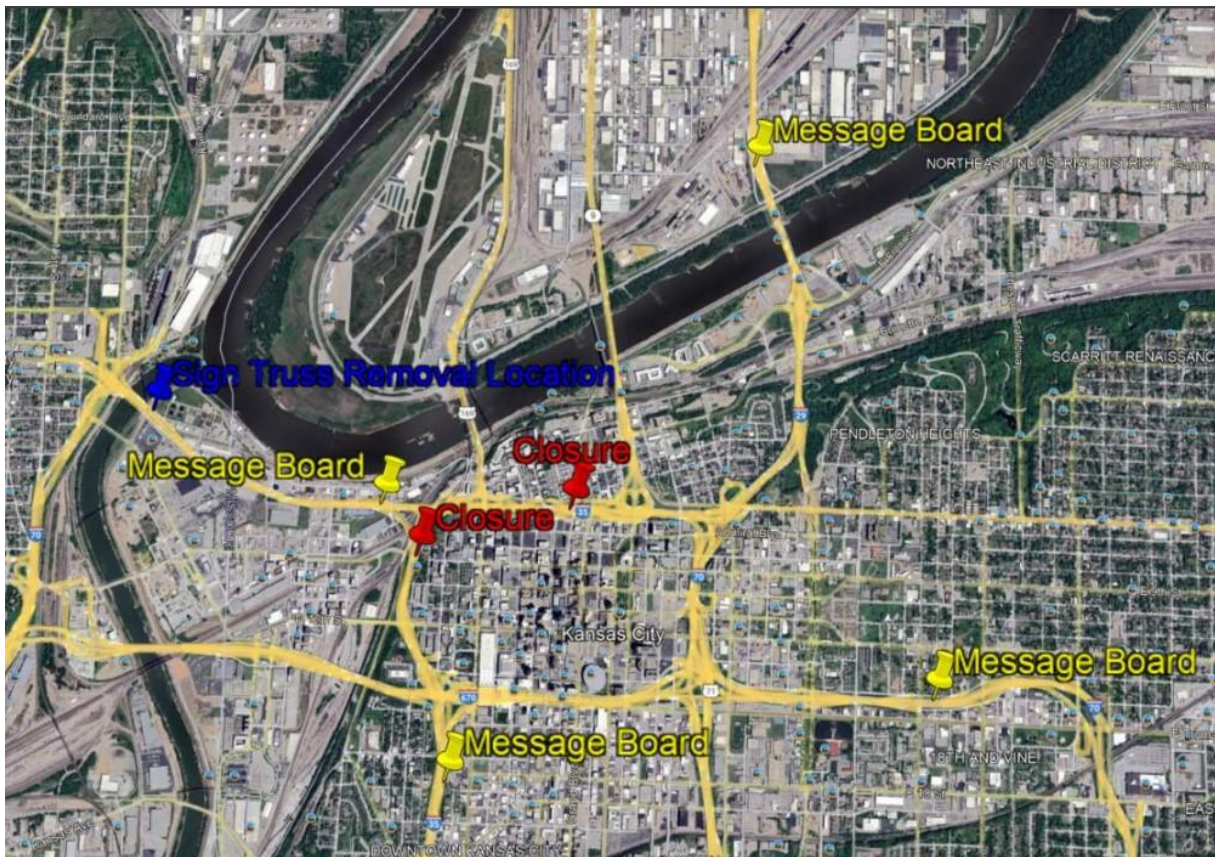
Traffic will be controlled using full highway and ramp closures, changeable message boards, channelizers and barricades.

Message boards will be placed in the area to alert motorists to upcoming work and closures.

Cooper Construction, LLC, of Wichita, is the contractor for the \$12,000 maintenance project.

KDOT urges all motorists to be alert and obey the warning signs when approaching and driving through a highway work zone. To stay aware of all road construction projects across Kansas go to www.kandrive.org or call 5-1-1. Drive safely and always wear your seat belt.

Map below shows closure locations marked in red, message board locations marked in yellow and sign truss removal location marked in blue.



###

This information can be made available in alternative accessible formats upon request. For information about obtaining an alternative format, contact the KDOT Division of Communications, 700 SW Harrison St., 2nd Fl. West, Topeka, KS 66603-3745 or phone 785-296-3585 (Voice) / 7-1-1 (Hearing Impaired).

Click below to connect to KDOT's Social Networks:

