



7400 West 129th Street, Suite 100 | Overland Park, KS 66213 | [www.69express.org](http://www.69express.org) | [info@69express.org](mailto:info@69express.org)



**IMMEDIATE RELEASE**

Dec. 13, 2023

**For more information:**

Delaney Tholen

785-817-9365

[delaney.tholen@ks.gov](mailto:delaney.tholen@ks.gov)

**I-435/U.S. 69 overnight closures tonight and tomorrow in Johnson County**

Multiple closures are scheduled overnight Wednesday, Dec. 13, and Thursday, Dec. 14, for I-435/U.S. 69 interchange ramps and eastbound and westbound I-435 in Johnson County, weather permitting.

These temporary closures are necessary to allow bridge girder setting work and are part of the Kansas Department of Transportation U.S. 69 expansion project (69Express). Message boards have been placed in the area alerting motorists to upcoming closures.

**The following will be fully closed to traffic from 8 p.m. Wednesday, Dec. 13, to 6 a.m. Thursday, Dec. 14:**

- All westbound I-435 lanes at U.S. 69;
- Westbound I-435 to southbound U.S. 69 ramp;
- Northbound U.S. 69 to westbound I-435 ramp; and
- Double left lane closures on eastbound I-435 at U.S. 69.

**The following will be fully closed to traffic from 8 p.m. Thursday, Dec. 14 to 6 a.m. Friday, Dec. 15:**

- All eastbound I-435 lanes at U.S. 69;
- Westbound I-435 to southbound U.S. 69 ramp;
- Eastbound I-435 to northbound U.S. 69 ramp;
- Southbound U.S. 69 to College Boulevard exit ramp; and
- Double left lane closures on westbound I-435 at U.S. 69.

**During the scheduled closures, I-435 detours will be marked as follows:**

- Eastbound I-435: traffic will be directed to southbound U.S. 69 and exit at College Boulevard, then turn left and travel eastbound to the College Boulevard/northbound U.S. 69 entrance ramp and then to eastbound I-435.

- Westbound I-435: traffic will be directed to northbound U.S. 69 and exit at 103<sup>rd</sup> Street, then turn right and travel westbound to the 103<sup>rd</sup> Street/southbound U.S. 69 entrance ramp and then to westbound I-435.

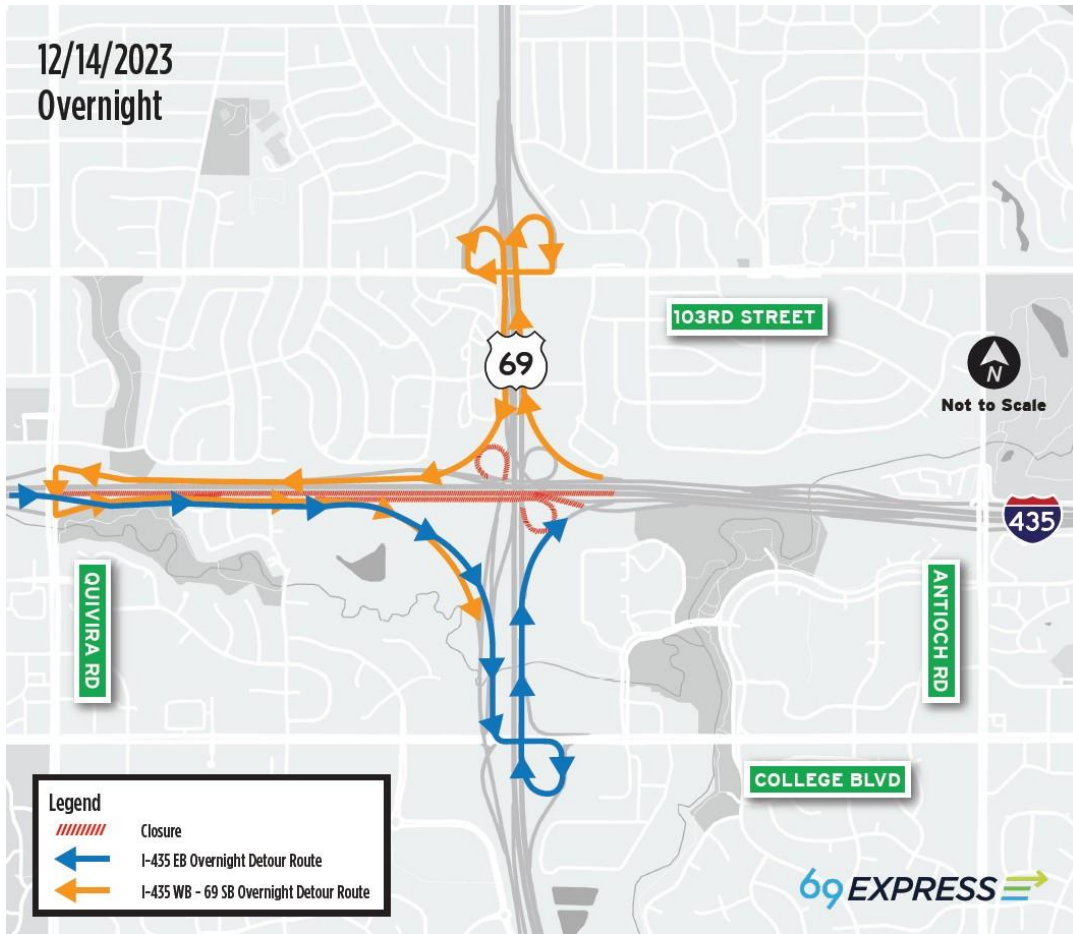
Also in the area, the 103<sup>rd</sup> Street to southbound U.S. 69 entrance ramp will be closed from 11 a.m. Wednesday, Dec. 13, to 6 a.m. Friday, Dec. 15. A detour will be marked.

The 69Express project includes reconstruction of U.S. 69, widening the highway with added express lanes – one in each direction between 151<sup>st</sup> and 103<sup>rd</sup> Streets – and interchange improvements at U.S. 69/167<sup>th</sup> Street in Overland Park.

All current U.S. 69 corridor construction and closure information is available on the 69Express project website, [www.69express.org](http://www.69express.org). For additional information, members of the public can get regular construction updates on the project on [Facebook](#) and [X](#) (formerly Twitter) pages and by [subscribing to the project newsletter](#) and [signing up to receive text message alerts](#).

*Maps below show closure locations marked in blue and detours marked in blue and orange.*





###

This information can be made available in alternative accessible formats upon request. For information about obtaining an alternative format, contact the KDOT Division of Communications, 700 SW Harrison St., 2<sup>nd</sup> Fl. West, Topeka, KS 66603-3745 or phone 785-296-3585 (Voice) / 7-1-1 (Hearing Impaired).

Click below to connect to KDOT's Social Networks:

