

IMMEDIATE RELEASE

Oct. 9, 2023

For more information:

Delaney Tholen

785-817-9365

delaney.tholen@ks.gov

K-92 to be fully closed Wednesday in Kansas and Missouri for Centennial Bridge inspections

Kansas Department of Transportation biannual bridge inspections are scheduled for Wednesday, Oct. 11 on the K-92 Centennial Bridge, weather permitting. Inspections will require full closure of K-92.

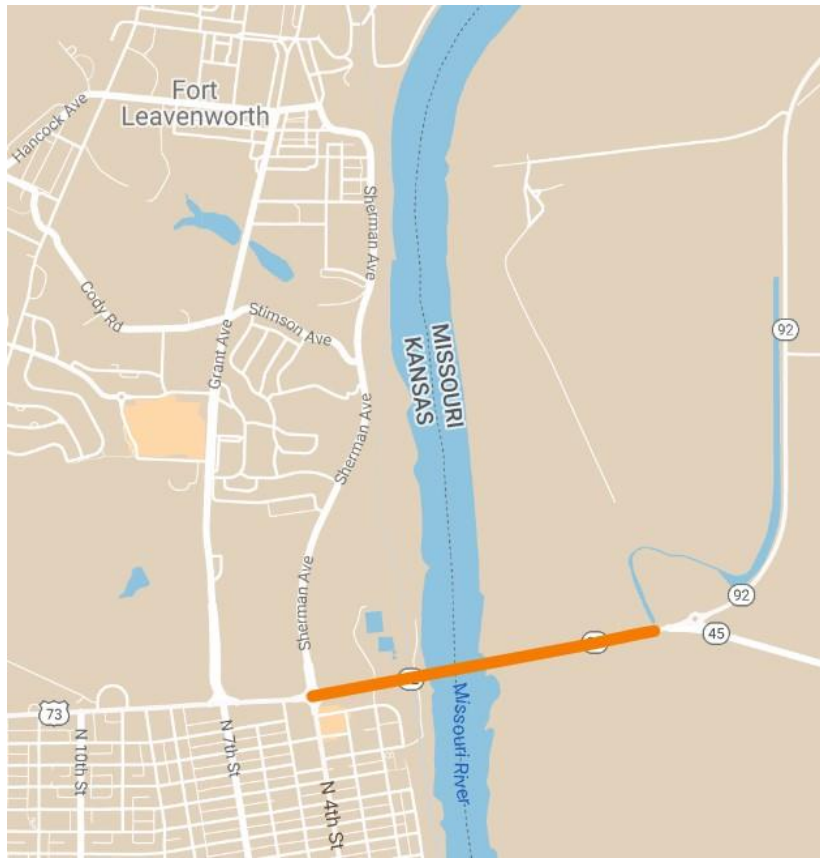
The following segment of K-92 will be fully closed to traffic on Wednesday, Oct. 11, from 9 a.m. to 3 p.m.:

- **Eastbound and westbound K-92, from U.S. 73 (K-7/4th Street) in Leavenworth to 500 feet west of the Missouri Route 45 Spur in Platte County, Mo.**

Delays are expected and motorists are asked to plan alternate routes and allow for extra travel time.

KDOT urges all motorists to be alert and obey the warning signs when approaching and driving through a highway work zone. To stay aware of all road construction projects across Kansas go to www.kandrive.gov or call 5-1-1. Drive safely and always wear your seat belt.

Map below shows closure location marked in orange.



###

This information can be made available in alternative accessible formats upon request. For information about obtaining an alternative format, contact the KDOT Division of Communications, 700 SW Harrison St., 2nd Fl. West, Topeka, KS 66603-3745 or phone 785-296-3585 (Voice) / 7-1-1 (Hearing Impaired).

Click below to connect to KDOT's Social Networks:

